



# May Commission Report

## *Director's Update*

Given by Sean Briggs, Deputy Director of Parking & Landside Facilities  
Boise Airport

MAY 1, 2024

# Employee Parking Garage is OPEN



- The Employee Garage officially opened Tuesday, April 16
- Facility will be used by based tenant employees at a monthly rate of \$35
- Shift parking only, no 24-hour parking

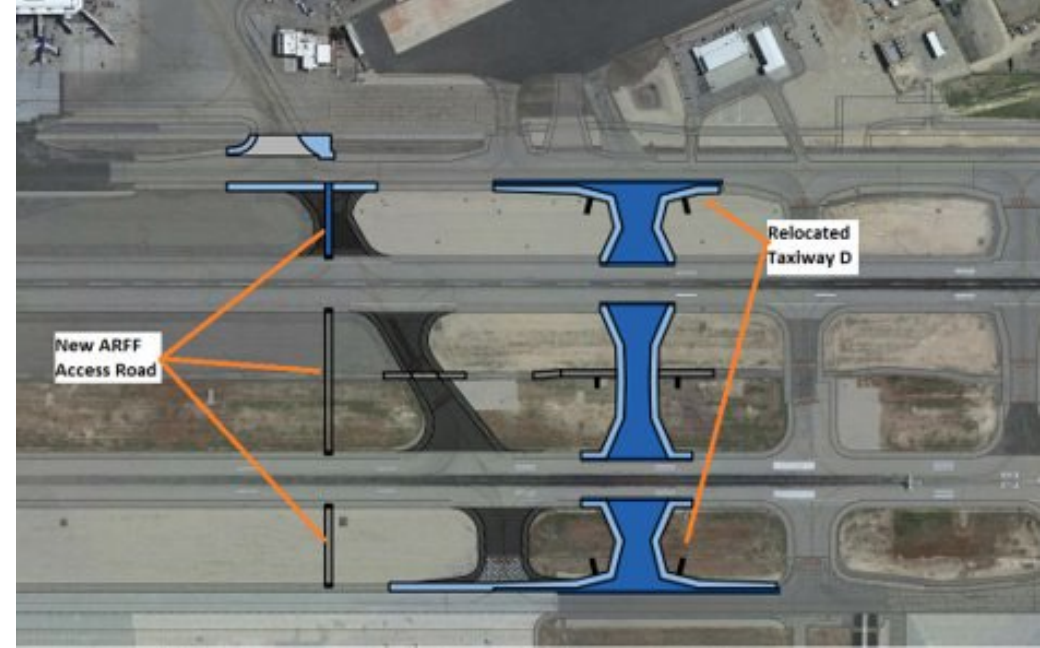
# Consolidated Rent-A-Car Center (CONRAC)



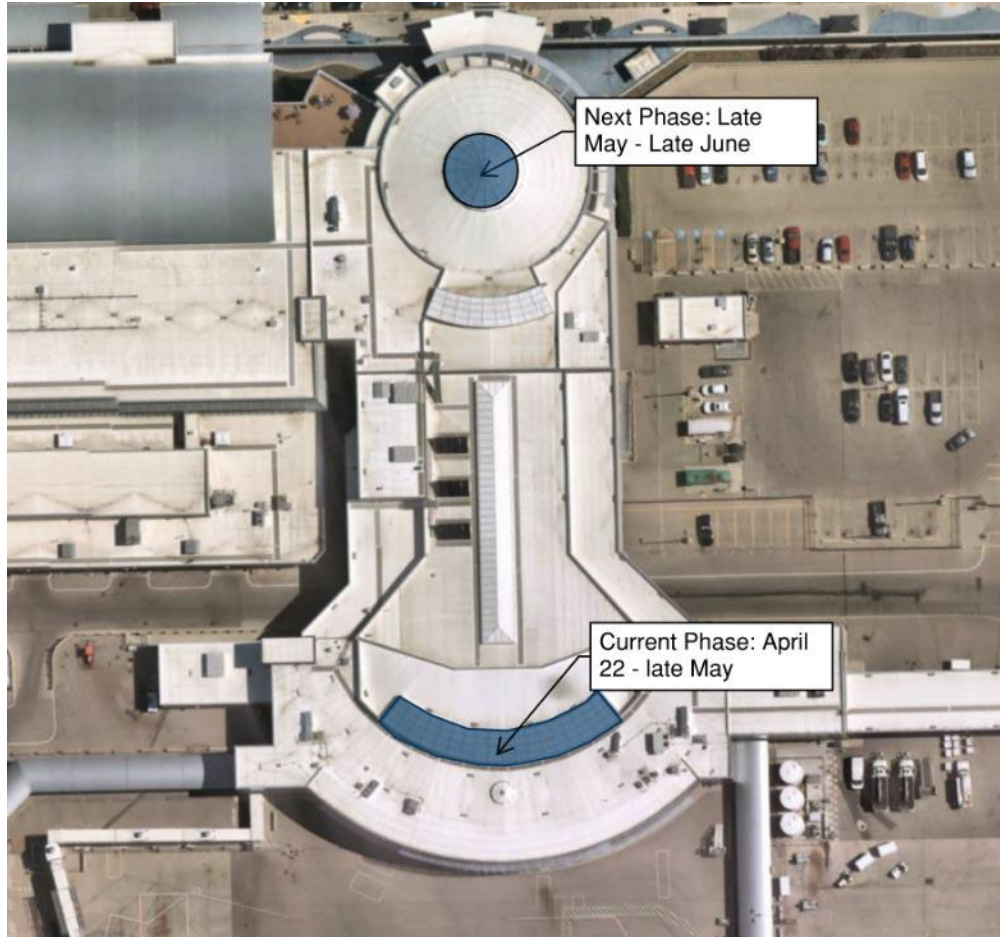
- Foundation preparations continue
- Tower Crane is Installed
- Utility work continues

# Taxiway D Relocation & ARFF Access Road Construction

- Phase 1 Construction started April 22, with closure of Runway 10L-28R and parts of Taxiway A, putting BOI in single runway operations for the summer construction season
- 6 total phases included in project with construction expected to last till mid-October



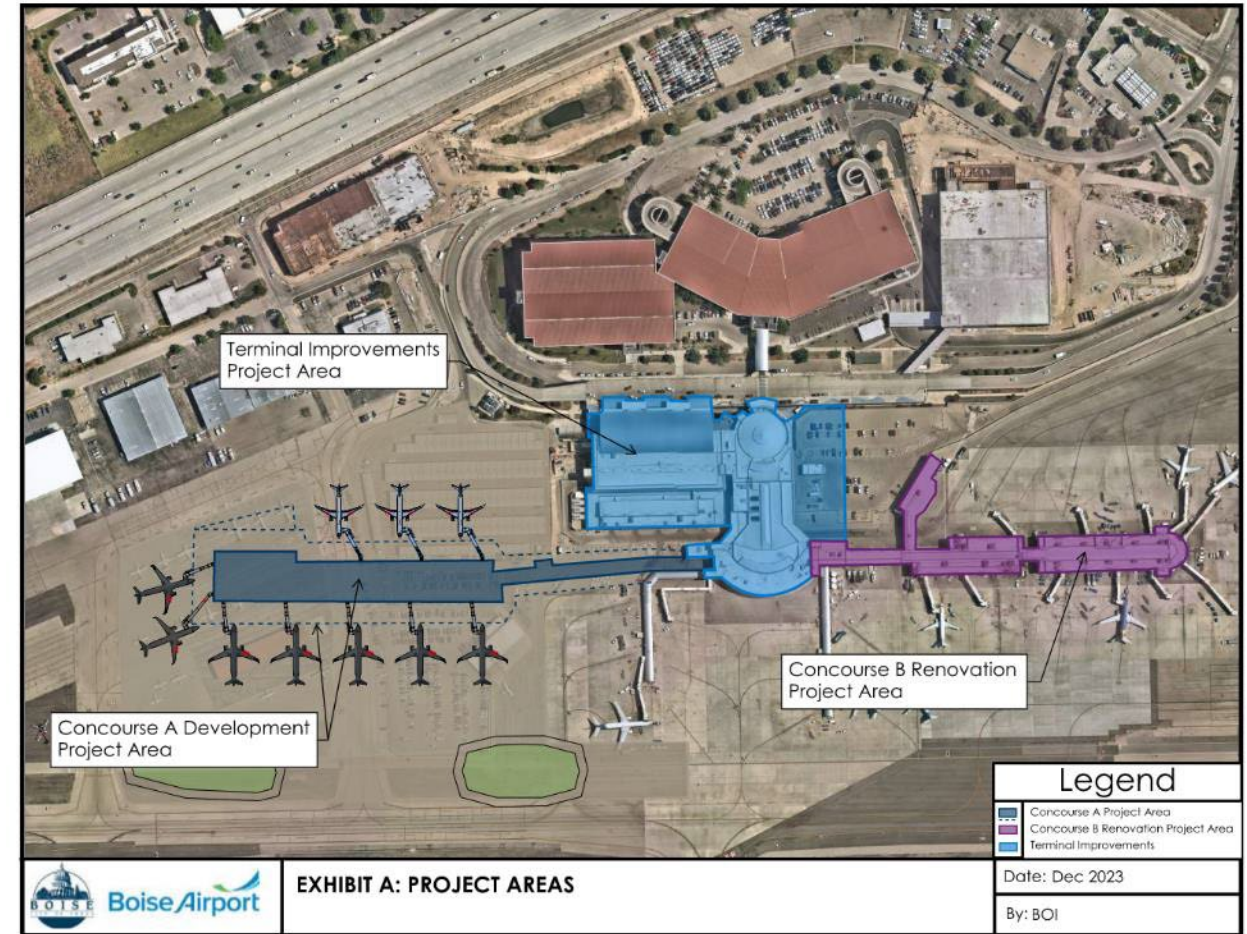
# Skylight Replacement Project



- Project replaces aging skylights in the food court and rotunda
- Current Phase: Replacing skylights in the Food Court/above Concourse C began on April 22 and will end in late May
- Next Phase: Replacing skylights in the Rotunda will begin in late May and be complete in late June

# RFQ Update: BOI Upgrade Program: Concourse Development and Terminal Improvements

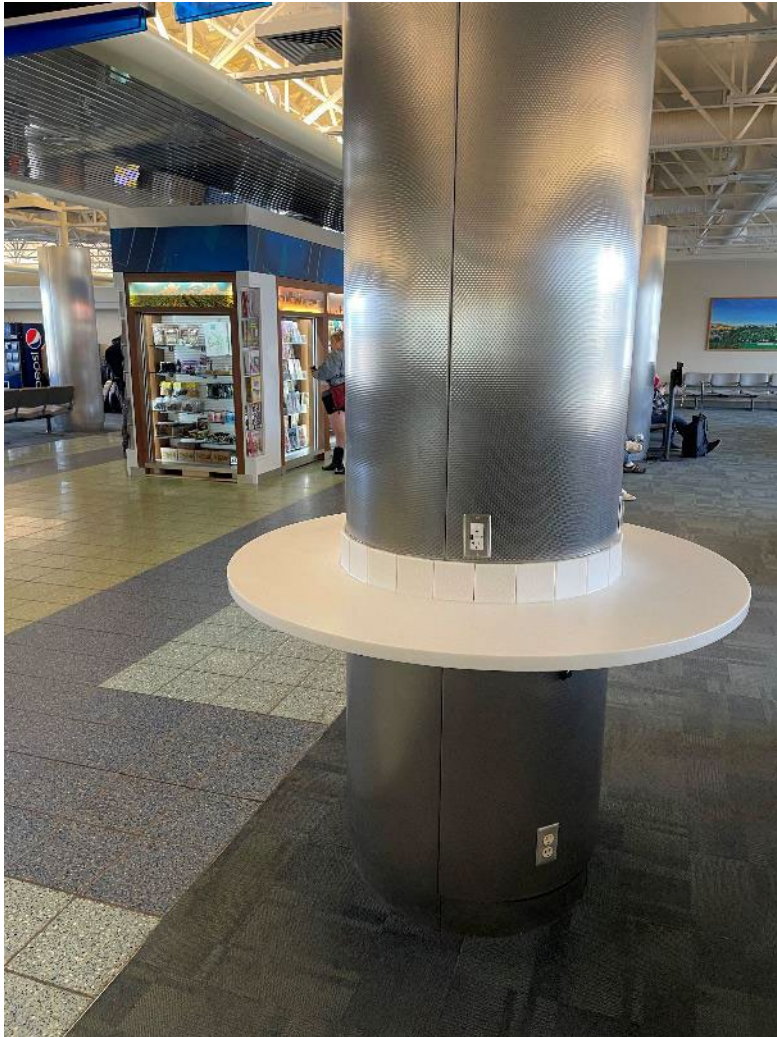
- **Fentress Architect** has been issued an Intent to Award and the Airport has begun contract negotiations
  - Other Fentress Aviation Projects:
    - PDX Terminal Balancing and Concourse E Extension
    - BNA Concourse D and Terminal Wings
    - CHS Terminal Redevelopment and Improvement Program
    - RDU Terminal 2 Expansion
- The Airport is targeting a contract award in summer 2024



# Jackson Jet Center Hangar Update

- OSHA investigators determined they've sufficiently documented the hangar collapse scene and collected enough physical evidence to turn the site back over to Big D Builders
- Big D Builders took possession of the site at the end of April
- OSHA's investigation is still ongoing and should be finalized by the end of July

# New Charging Counters in Terminal



- In a response to passenger requests, we've added additional charging areas in the terminal
- Leveraging existing infrastructure, counters with electrical outlets were added for passengers to utilize
- Five charging counters were added on the B Concourse and 1 charging counter was added on the C Concourse



# Boise Airport Hosted Girl Scouts of Silver Sage



- First event in series: **“Girls for the Real World”** planned by the GS Teen Advisory Council
  - Event included networking, tips for resume writing and interviewing, as well as a leadership panel, including Commissioner Westergard
- 12 girls attended ranging from the 8<sup>th</sup>-12<sup>th</sup> Grade
- 12+ Adult Mentors from City of Boise, Intuit, HP, Business Owners

girl scouts   
of silver sage

# End of Winter Lunch

We saw **36.9 INCHES** of snowfall since October 1, 2023—more than double BOI's average accumulation—making the end of winter operations an occasion worth celebrating!



# Well-Deserved Promotion



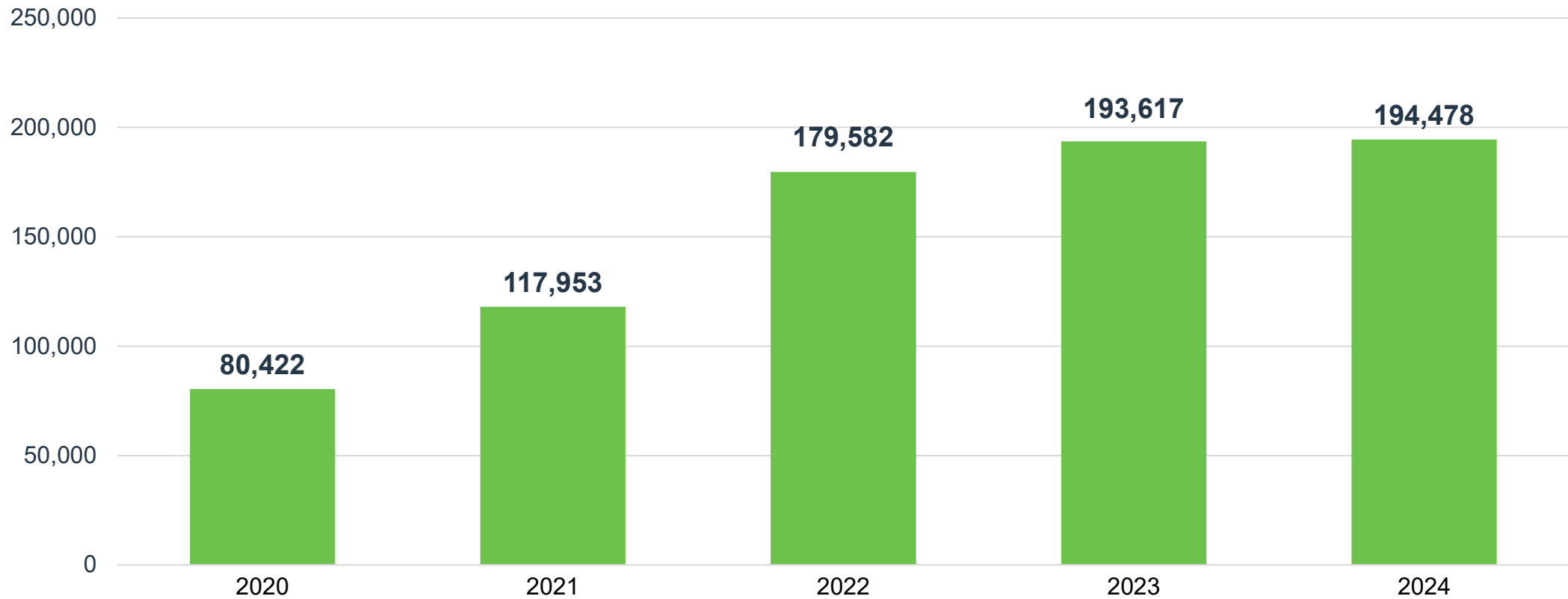
**James Stireman**

Airfield Maintenance Supervisor

*11 years with the City of Boise*

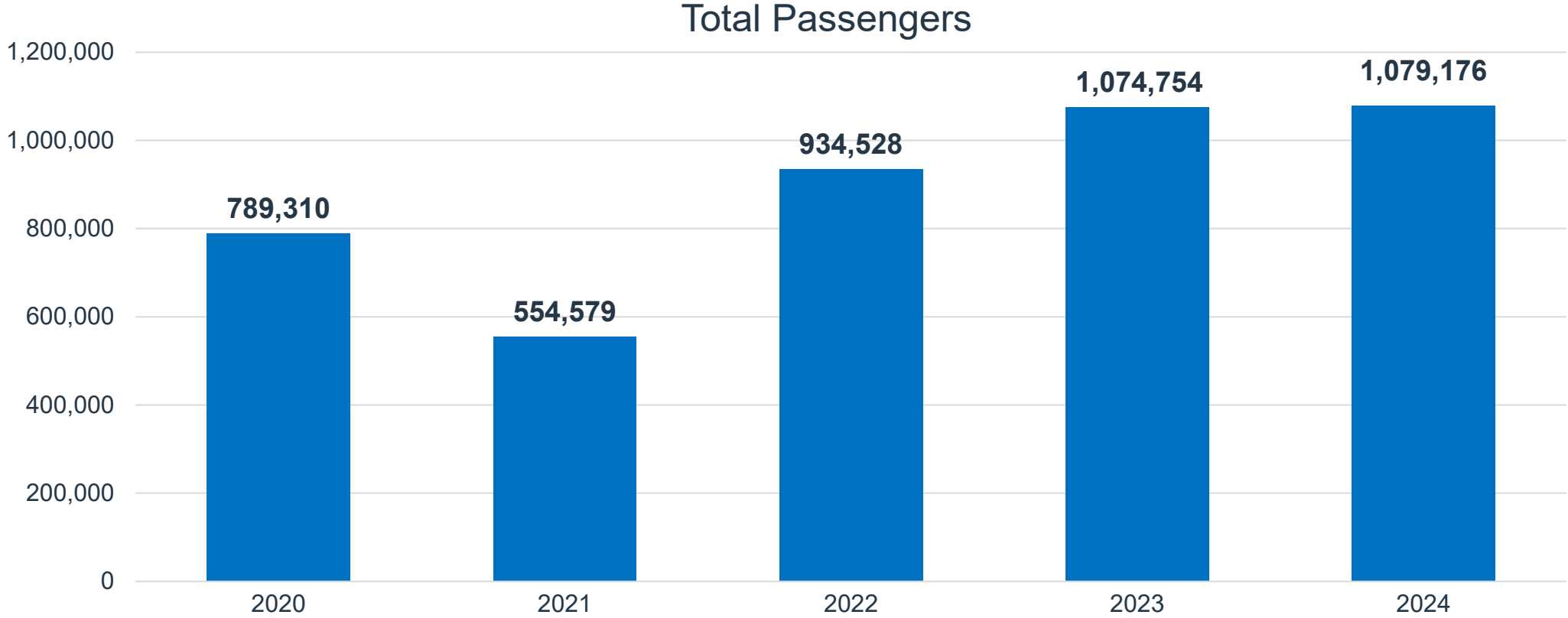
# March Enplanements

*Enplanements were slightly above 2023 passenger counts*



# 2024 Total Passengers (through March)

*Passenger counts slightly above 2023's numbers*



MARCH 2024

<b>Top 10 Operating Revenue Description</b>	<b>FY 2024</b>	<b>FY 2023</b>	<b>\$ Change</b>	<b>% Change</b>
Parking Lot	\$ 10,315,292	\$ 8,269,224	\$ 2,046,068	25%
Signatory Airline Landing Fees	\$ 4,778,342	\$ 1,977,002	\$ 2,801,340	142%
Rental Car Concession	\$ 2,978,054	\$ 3,148,586	(\$ 170,531)	-5%
Terminal Rent - Airlines	\$ 2,577,148	\$ 1,921,664	\$ 655,484	34%
Industrial Land Rent	\$ 2,150,563	\$ 2,095,924	\$ 54,639	3%
Terminal Concessions – Food/Beverage	\$ 979,420	\$ 911,722	\$ 67,698	7%
Landings/Freight	\$ 834,150	\$ 459,463	\$ 374,686	82%
Terminal Concessions – Retail	\$ 724,806	\$ 653,767	\$ 71,039	11%
Advertising	\$ 370,019	\$ 352,959	\$ 17,060	5%
Employee Parking	\$ 346,458	\$ 333,000	\$ 13,458	4%
<b>Total Top 10 Operating Revenue</b>	<b>\$ 26,054,252</b>	<b>\$ 20,123,312</b>	<b>\$ 5,930,941</b>	<b>--</b>
Other Operating Revenue	\$ 1,927,575	\$ 2,264,034	(\$ 336,460)	-15%
<b>Total Operating Revenue</b>	<b>\$ 27,981,827</b>	<b>\$ 22,387,346</b>	<b>\$ 5,594,481</b>	<b>25%</b>

MARCH 2024

<b>Top 10 Operating Expenses Description</b>	<b>FY 2024</b>	<b>FY 2023</b>	<b>\$ Change</b>	<b>% Change</b>
Personnel	\$ 7,562,571	\$ 6,231,843	\$ 1,330,728	21%
Indirect Cost Reimbursement	\$ 2,530,929	\$ 2,182,527	\$ 348,402	16%
Fire Service	\$ 2,287,230	\$ 1,566,018	\$ 721,212	46%
Policing Service	\$ 2,281,235	\$ 1,654,109	\$ 627,126	38%
Parking Management	\$ 1,248,834	\$ 2,263,726	(\$ 1,014,892)	-45%
Chemicals	\$ 794,619	\$ 754,325	\$ 40,294	5%
Power	\$ 529,356	\$ 485,084	\$ 44,272	9%
R/M – Structural/Electrical/Plumbing	\$ 515,771	\$ 661,194	(\$ 145,423)	-22%
R/M – Fleet Management	\$ 421,774	\$ 234,012	\$ 187,763	80%
Credit Card Fees	\$ 321,952	\$ 211,224	\$ 110,728	52%
<b>Total Top 10 Operating Expenses</b>	<b>\$ 18,494,271</b>	<b>\$ 16,244,062</b>	<b>--</b>	<b>--</b>
Other Operating Expense	\$ 3,183,588	\$ 3,078,373	\$ 105,215	3%
<b>Total Operating Expense</b>	<b>\$ 21,677,859</b>	<b>\$ 19,322,435</b>	<b>\$ 2,355,424</b>	<b>12%</b>

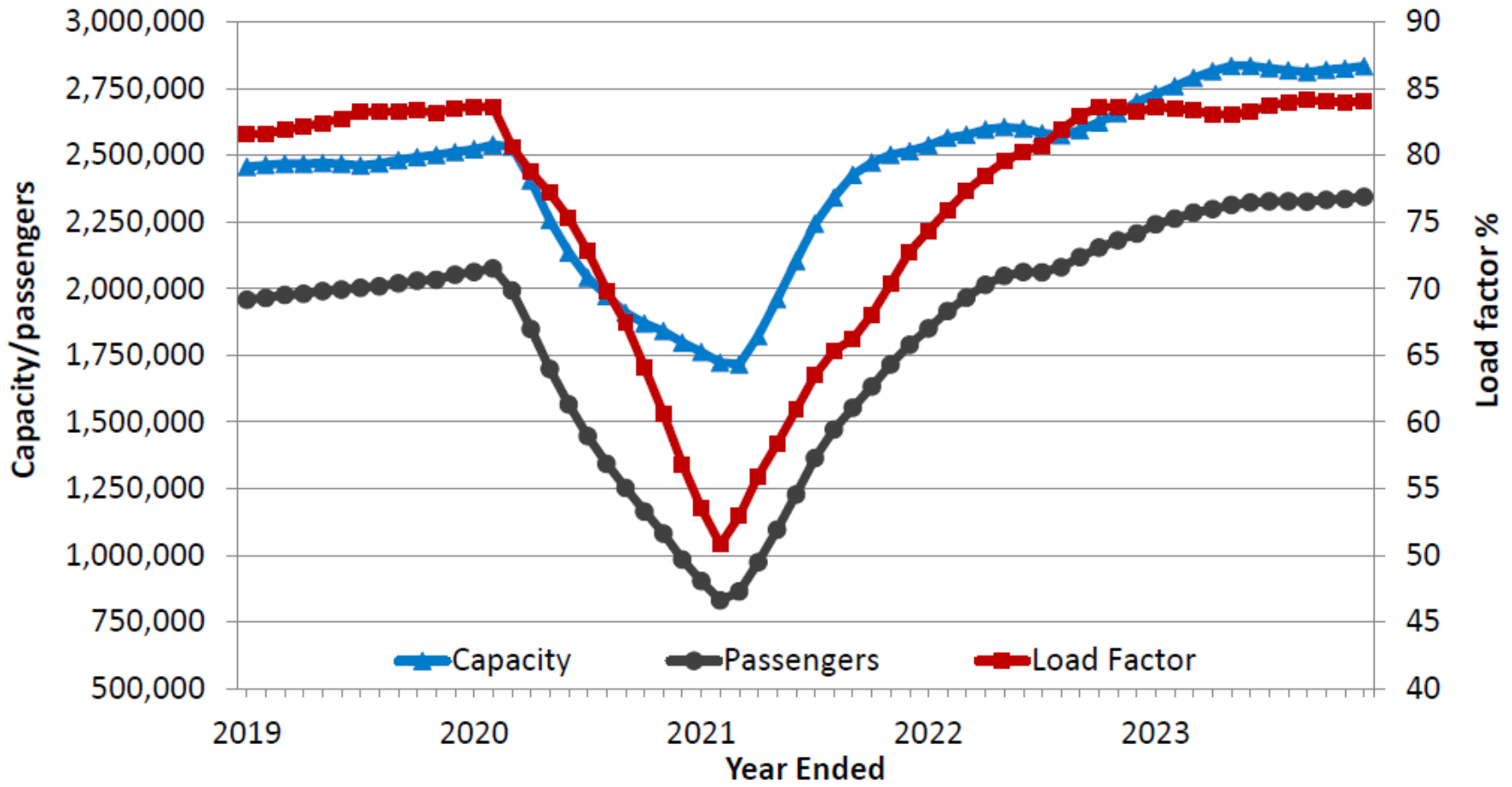
# Top Origination/Destination Markets

Rank	Destination	O&D Pax	O&D Revenue	Average Fare (\$)	Yield (¢)	% Change Since Q4 2022			
						Pax	Rev	Fare	Yield
1	Seattle, WA	99,918	12,705,485	127	32	3	7	4	4
2	Las Vegas, NV	71,810	7,119,997	99	19	13	6	(6)	(6)
3	Phoenix, AZ (PHX)	60,289	10,020,028	166	23	(8)	23	35	35
4	Portland, OR	47,798	7,581,534	159	46	19	15	(3)	(3)
5	Denver, CO	44,490	7,343,825	165	25	10	15	4	4
6	San Diego, CA	43,043	6,734,175	156	21	(12)	11	26	26
7	Sacramento, CA	41,750	5,631,585	135	31	6	21	14	14
8	Los Angeles, CA	39,203	7,136,542	182	27	(19)	(3)	20	20
9	Orange County, CA	32,601	4,711,246	145	21	3	15	12	12
10	Spokane, WA	32,137	4,413,662	137	48	35	17	(13)	(13)
11	San Francisco, CA	29,745	4,770,393	160	31	5	12	6	6
12	Burbank, CA	28,756	3,583,686	125	19	8	52	41	41
13	Oakland, CA	24,846	2,974,022	120	23	(6)	8	15	15
14	San Jose, CA	22,961	3,415,373	149	28	(11)	7	21	21
15	Salt Lake City, UT	21,845	4,718,518	216	74	5	16	10	10
16	Dallas, TX (DFW)	20,362	5,401,369	265	21	10	6	(4)	(4)
17	Chicago, IL (ORD)	19,924	4,373,513	220	15	4	(5)	(9)	(9)
18	Minneapolis, MN	15,853	4,055,731	256	22	8	28	18	18
19	Atlanta, GA	15,684	4,608,879	294	16	4	7	2	2
20	Orlando, FL (MCO)	14,270	3,732,488	262	12	3	(10)	(12)	(12)
<b>Total/Average</b>		<b>1,195,280</b>	<b>256,177,486</b>	<b>214</b>	<b>19</b>	<b>4</b>	<b>10</b>	<b>5</b>	<b>3</b>

15 of the top 20 markets had increased passengers compared to Q4 2022, with Spokane increasing by the highest percentage



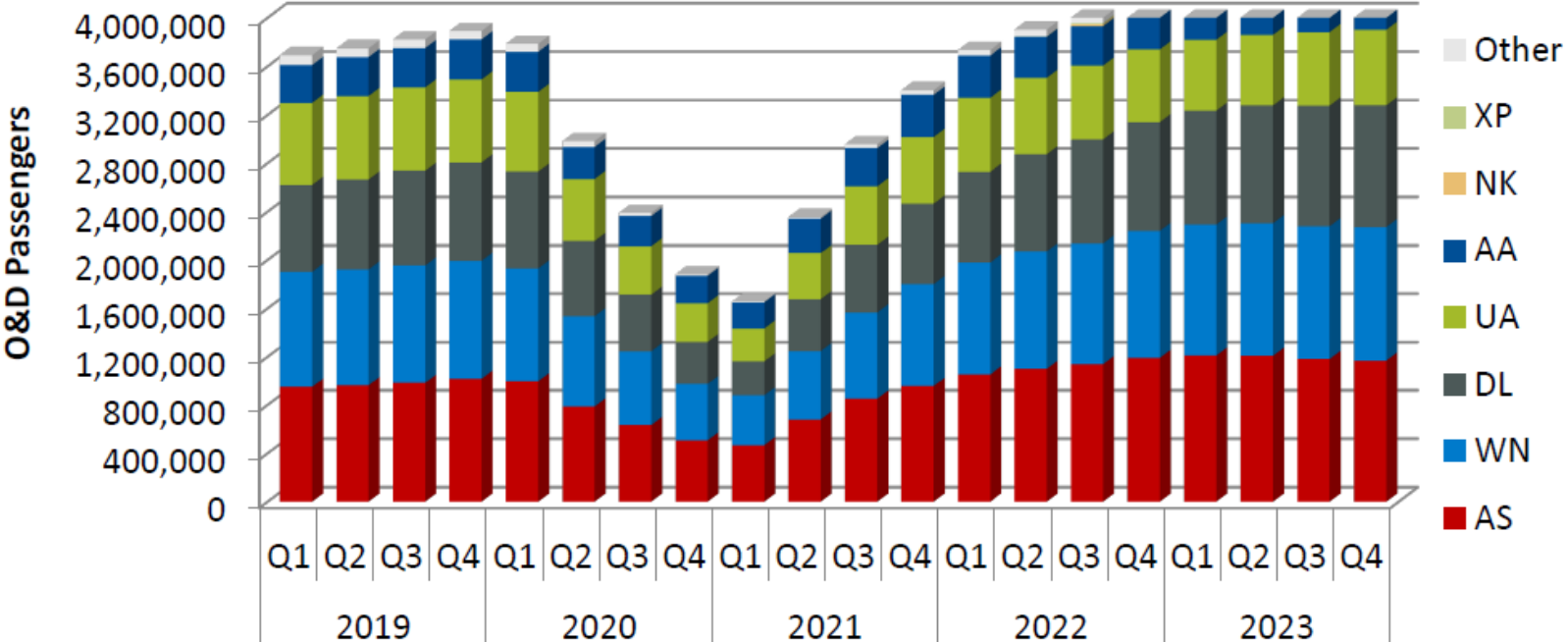
# Boise Traffic/Capacity Trends



YE December 2023 capacity was up 5%, while passengers were up 6%, **leading to a 1% point increase in the average load factor (84%)**

# Boise Airline Market Share

*UA gained 1 point of market share against AS losing 1 point of share in the latest year-ended period*



Year	Quarter	Airline Market Share								
		AS	WN	DL	UA	AA	G4	NK	XP	Other
2022	Q1	27%	24%	20%	16%	9%	0%	3%	0%	1%
	Q2	27%	24%	20%	16%	8%	0%	3%	0%	1%
	Q3	28%	24%	21%	15%	8%	0%	3%	0%	1%
	Q4	28%	25%	21%	14%	8%	1%	2%	0%	1%
2023	Q1	27%	24%	21%	13%	8%	1%	2%	1%	1%
	Q2	27%	24%	22%	13%	8%	2%	2%	1%	2%
	Q3	26%	24%	22%	13%	8%	2%	2%	1%	2%
	Q4	25%	24%	22%	14%	8%	2%	2%	1%	2%

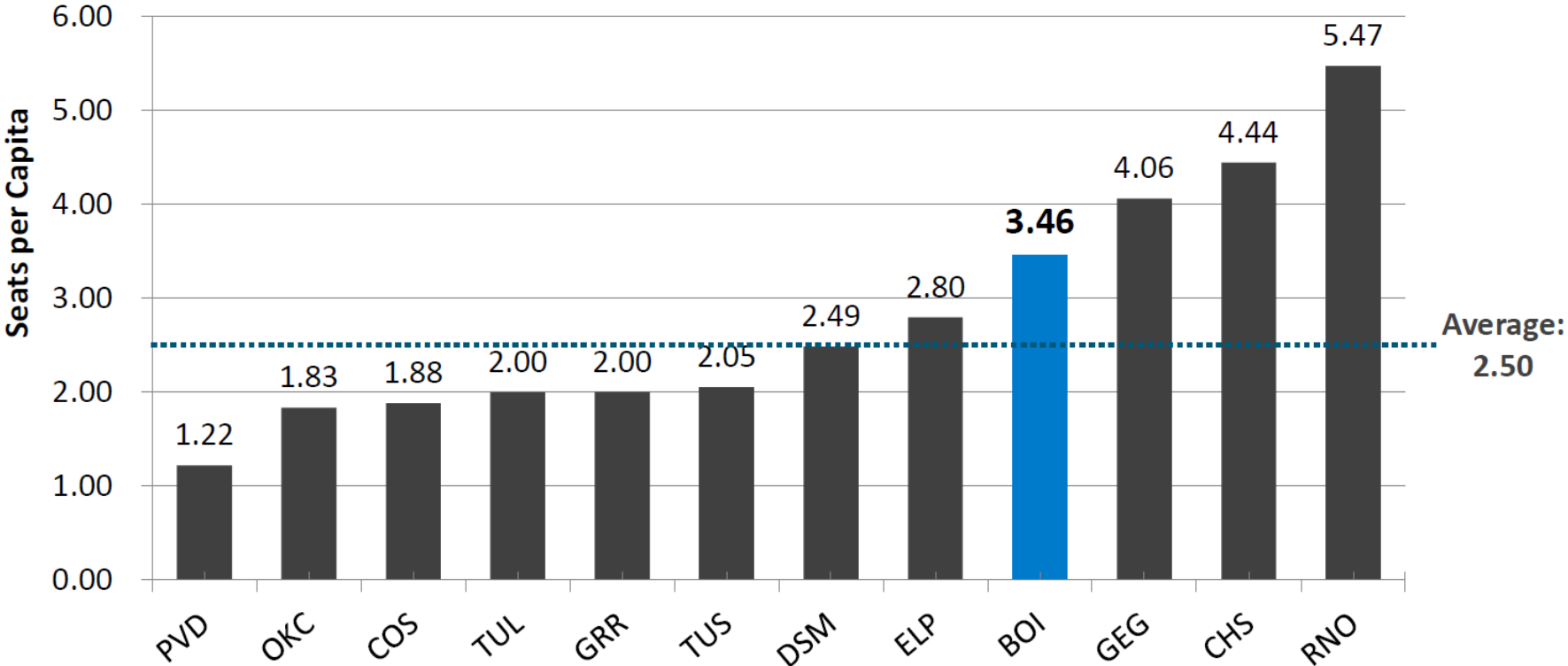
# Boise Forward Looking Schedule

*Over the next 6 months, BOI's flights are scheduled to be up 11%, while seats are scheduled to be up 10% compared to the same months in the prior year*

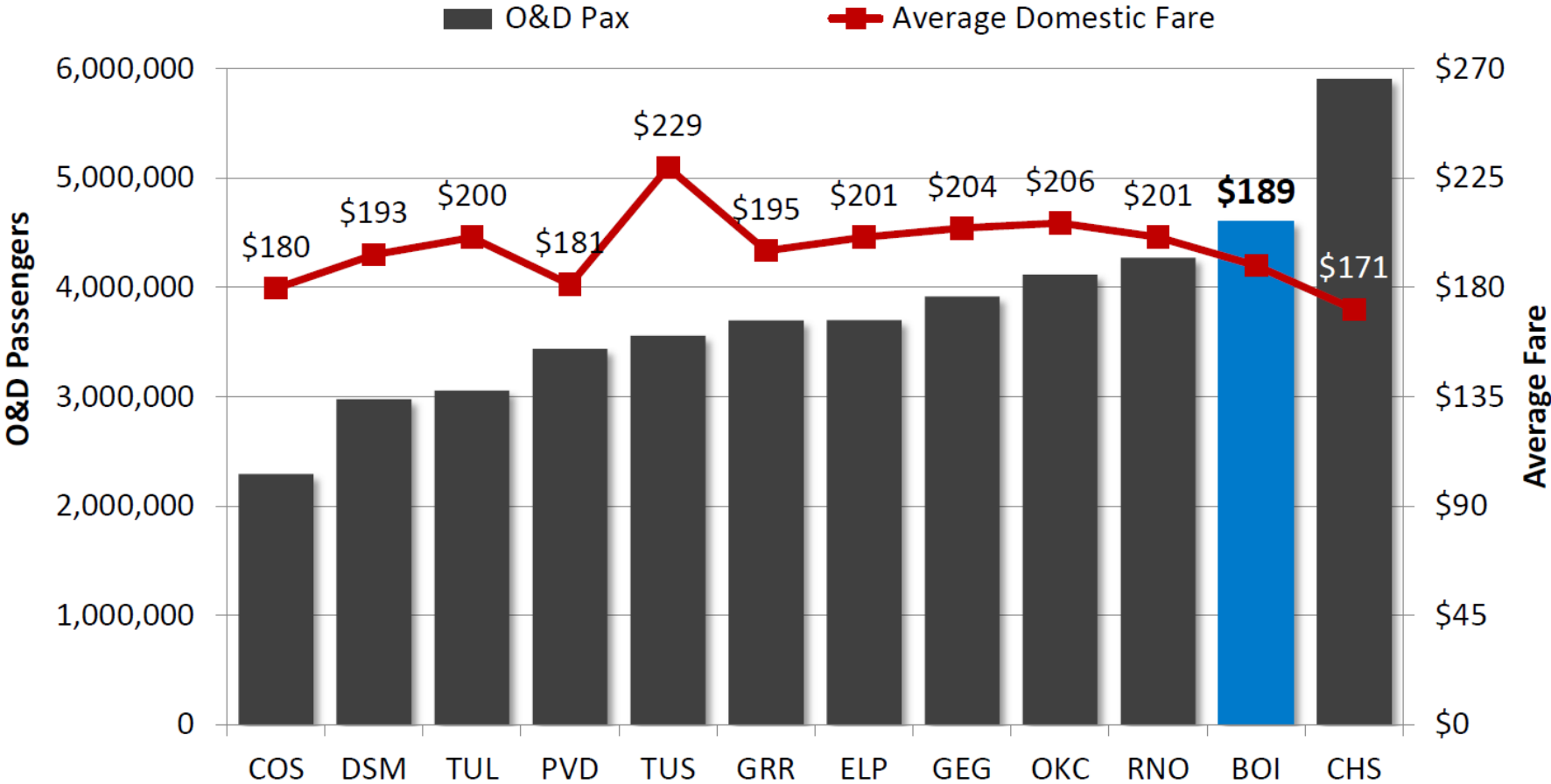
Airline	Destination	Year-Over-Year Change %											
		Apr 2024		May 2024		Jun 2024		Jul 2024		Aug 2024		Sept 2024	
		Flts	Seats	Flts	Seats	Flts	Seats	Flts	Seats	Flts	Seats	Flts	Seats
<b>Total</b>		4%	1%	7%	9%	14%	14%	15%	15%	13%	14%	10%	9%

# Seats Per Capita Comparison

*BOI exceeds all comparison markets except Spokane (GEG), Charleston (CHS) and Reno (RNO) in seats per capita and remained steady at 3.46 from YE Q3 2023 to YE Q4 2023*



# Origination/Destination Passenger and Airfare Comparison



***BOI ranked 2nd in O&D passengers and had the 4<sup>th</sup> lowest average domestic fare***

# Year-Over-Year Comparisons

Airport	2023 MSA Population	YE Q4 2023			YOY Change		
		# of Nonstop Destinations	O&D Pax	Seats	# of Nonstop Destinations	O&D Pax	Seats
Reno, NV	510,337	22	4,241,328	5,460,727	(12)	5%	7%
Spokane, WA	603,137	20	3,884,149	4,794,904	(1)	8%	7%
Des Moines, IA	732,565	31	2,894,884	3,534,260	(1)	11%	10%
Colorado Springs, CO	780,903	17	2,180,349	2,806,993	4	6%	2%
<b>Boise, ID</b>	<b>820,134</b>	<b>26</b>	<b>4,555,113</b>	<b>5,624,959</b>	<b>0</b>	<b>11%</b>	<b>8%</b>
Charleston, SC	835,740	52	5,722,822	7,222,666	2	15%	14%
El Paso, TX	888,155	16	3,665,575	4,873,965	0	9%	16%
Tulsa, OK	1,037,114	25	3,003,891	4,055,909	0	11%	16%
Tucson, AZ	1,071,487	21	3,456,557	4,318,470	2	10%	14%
Grand Rapids, MI	1,105,402	33	3,588,289	4,289,074	(2)	9%	9%
Oklahoma City, OK	1,468,034	24	4,022,702	5,234,029	(2)	10%	14%
Providence, RI	1,682,286	30	3,341,181	4,076,505	1	10%	10%

BOI had the 3<sup>rd</sup> highest percentage passenger increase (slightly higher than DSM but slightly lower than TUL) and had the 9<sup>th</sup> highest percentage seat increase of the comparison markets



# Boise Airport

[www.iflyboise.com](http://www.iflyboise.com)