

Airport Commission Report



June 2, 2016

Boise Airport



Operations Update

- May 5: Hosted SEA staff touring BOI Ops Center's CCTV system
 - They are upgrading to our GENETEC system
- May 25: BOI Triennial Emergency Exercise
- Took delivery of third MB5 (AIP funded)
- Wildlife mitigation program was successful



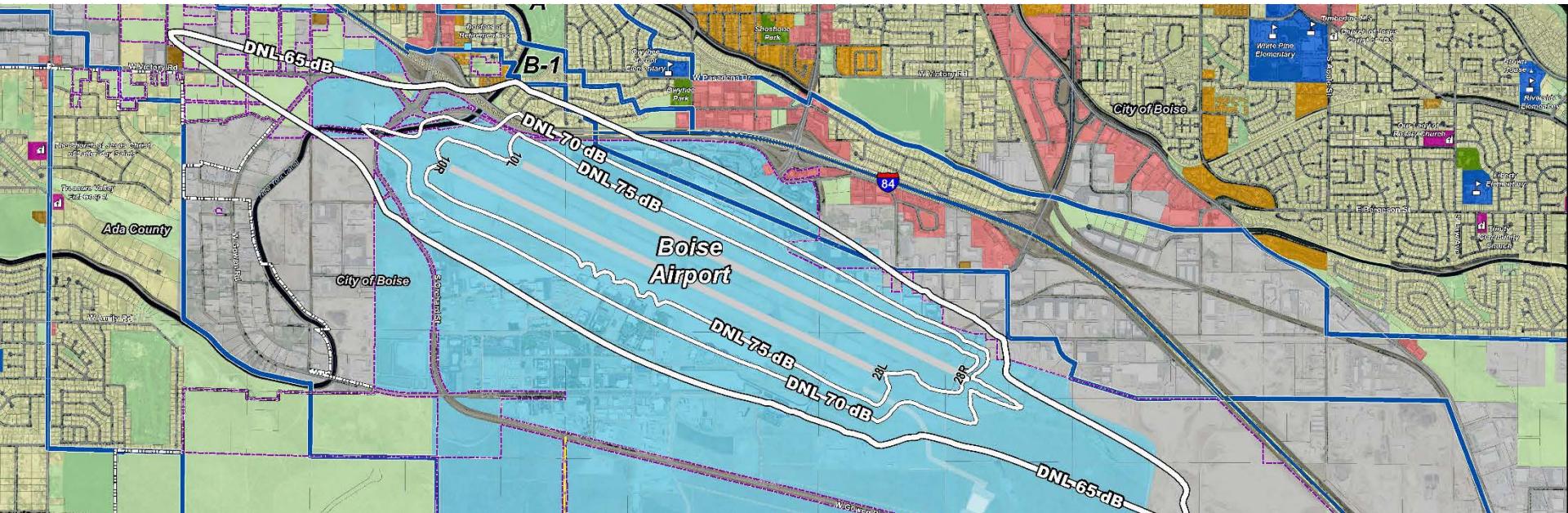
Tri-Ex Disaster Exercise

May 25, 2016



Noise Study Accepted

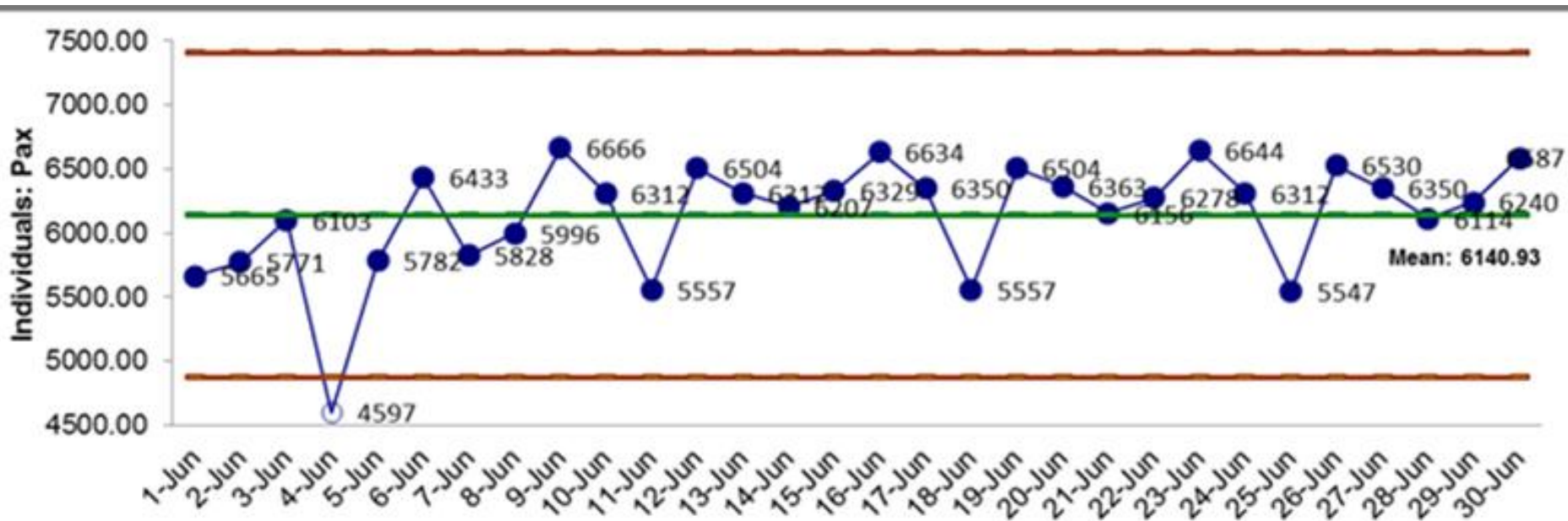
- Noise Exposure Map was accepted by the FAA into the Federal Register
- Noise Compatibility Program is still under review, but is expected to be decided on by October 29, 2016
- The airport posted this information in the Idaho Statesman (3 times), iflyboise.com, and emailed to everyone who left contact information at one of the public noise study meetings



TSA Passenger Projections

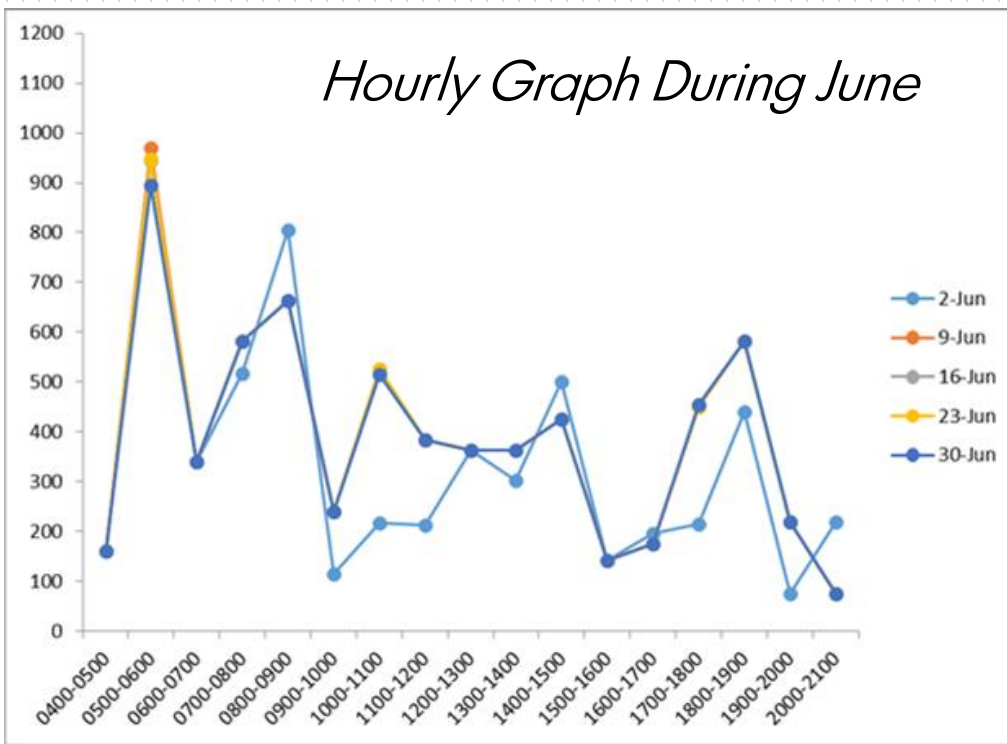
- Only 9 days below 6000 enplanements per day
- Capacity is peaked between 5:00am – 6:00am daily

June Daily Max Capacity Chart



Proactive Approach

- The Boise Airport and TSA are being proactive to get the word out to travelers
- KBOI2 ran a story regarding summer travel and TSA protocol
- Social media plan is in place to continue to remind the public in June



Delta Day of Hope

May 11, 2016

- Delta hosted fundraiser for Relay for Life
- Lunch and silent auction raised funds
- This event occurs nationwide

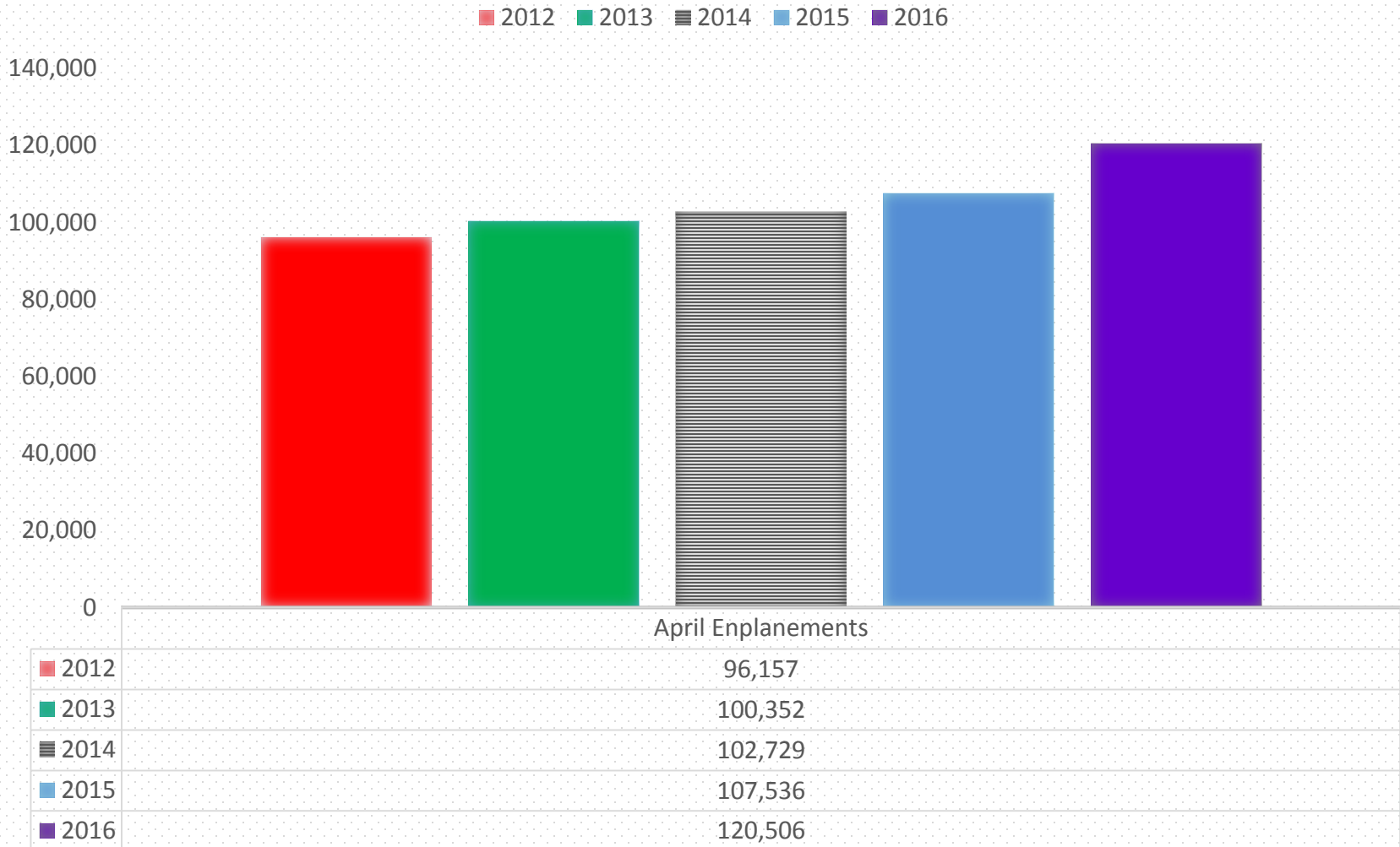


Dallas Inaugural Event



April Enplanements

Enplanements up 12% - April 2016 over April 2015

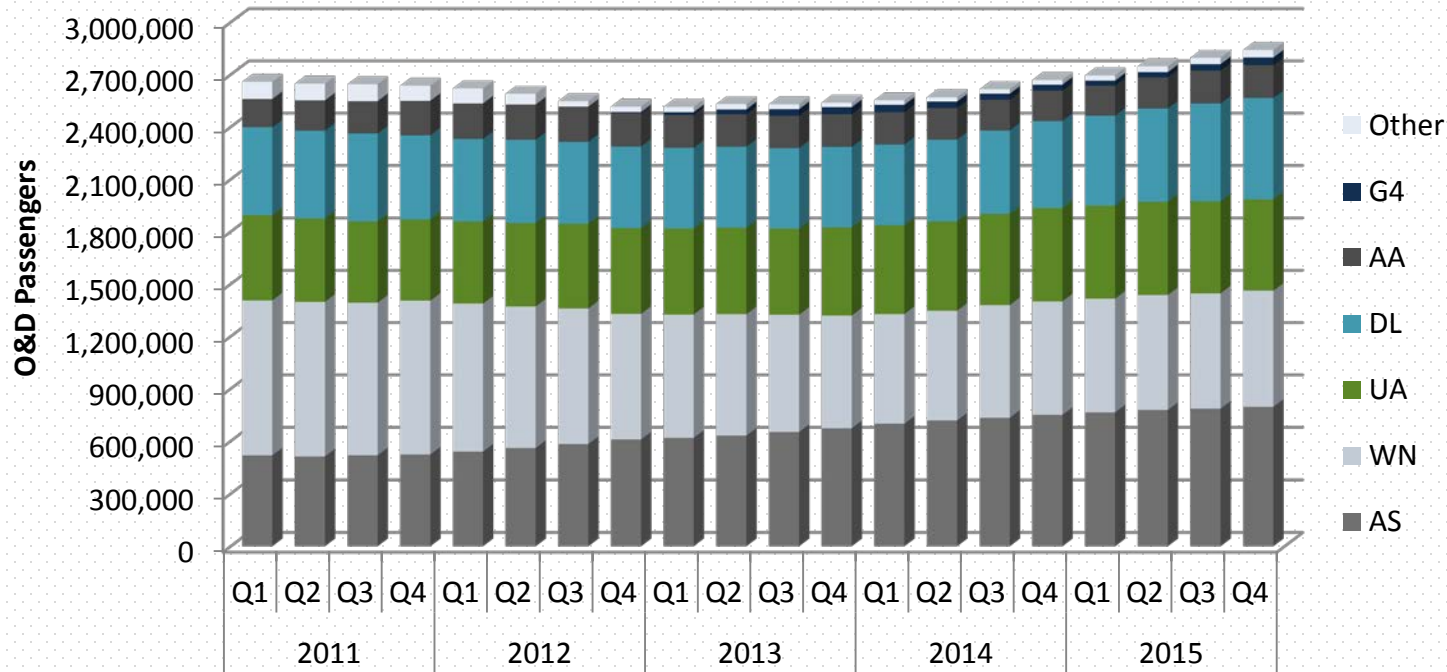


TOP O&D MARKETS – Q4 2015

Rank	Destination	O&D Pax	O&D Revenue	Average Fare (\$)	Yield (¢)	% Change Since 4Q 2014			
						Pax	Rev	Fare	Yield
1	Seattle, WA	75,878	8,368,432	110	28	12	11	(1)	(1)
2	Portland, OR	54,591	6,204,608	114	33	2	13	10	10
3	Phoenix, AZ (PHX)	38,613	5,779,935	150	20	6	10	4	4
4	Las Vegas, NV	35,119	4,019,369	114	22	6	13	6	6
5	Denver, CO	32,378	5,131,005	158	24	5	8	3	3
6	Los Angeles, CA	32,178	4,296,013	134	20	13	5	(7)	(7)
7	Spokane, WA	32,066	3,041,697	95	33	15	6	(8)	(8)
8	San Diego, CA	22,690	2,852,490	126	17	11	10	(1)	(1)
9	Salt Lake City, UT	18,839	3,101,846	165	57	1	16	15	15
10	Oakland, CA	18,682	2,961,962	159	31	(10)	8	20	20
11	Sacramento, CA	14,004	1,694,721	121	28	1	(8)	(9)	(9)
12	San Francisco, CA	13,645	2,838,138	208	40	(12)	(2)	11	11
13	San Jose, CA	13,584	1,756,747	129	25	11	12	1	1
14	Orange County, CA	12,234	1,932,746	158	23	8	18	9	9
15	Chicago, IL (ORD)	11,818	2,881,780	244	17	23	4	(16)	(16)
16	Minneapolis, MN	10,791	2,657,184	246	22	2	(2)	(4)	(4)
17	Dallas, TX (DFW)	9,491	1,986,622	209	16	15	10	(5)	(5)
18	Orlando, FL (MCO)	8,602	1,914,051	223	10	15	9	(6)	(6)
19	Atlanta, GA	8,240	2,110,106	256	14	7	14	7	7
20	Ontario, CA	8,218	1,228,321	149	23	16	19	3	3
Total/Average		743,174	141,662,013	191	18	6	5	(1)	(2)

- The top 10 markets were the same as the prior year quarter with some shifting in the ranking between SAN, SLC and OAK.
- Passengers and revenue increased while fare and yield decreased slightly compared to Q4 2014.

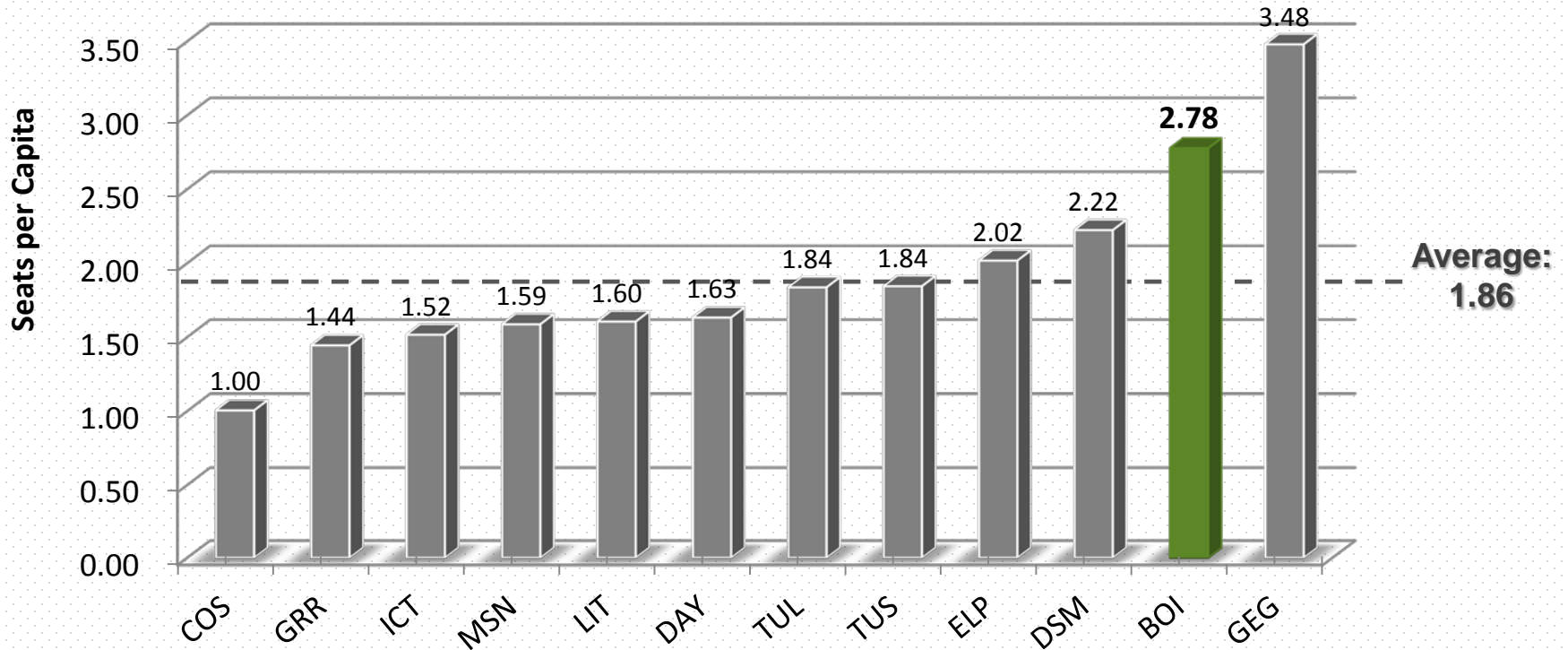
BOI O&D PASSENGER MARKET SHARE



All airlines had steady market shares in 4th quarter 2015.

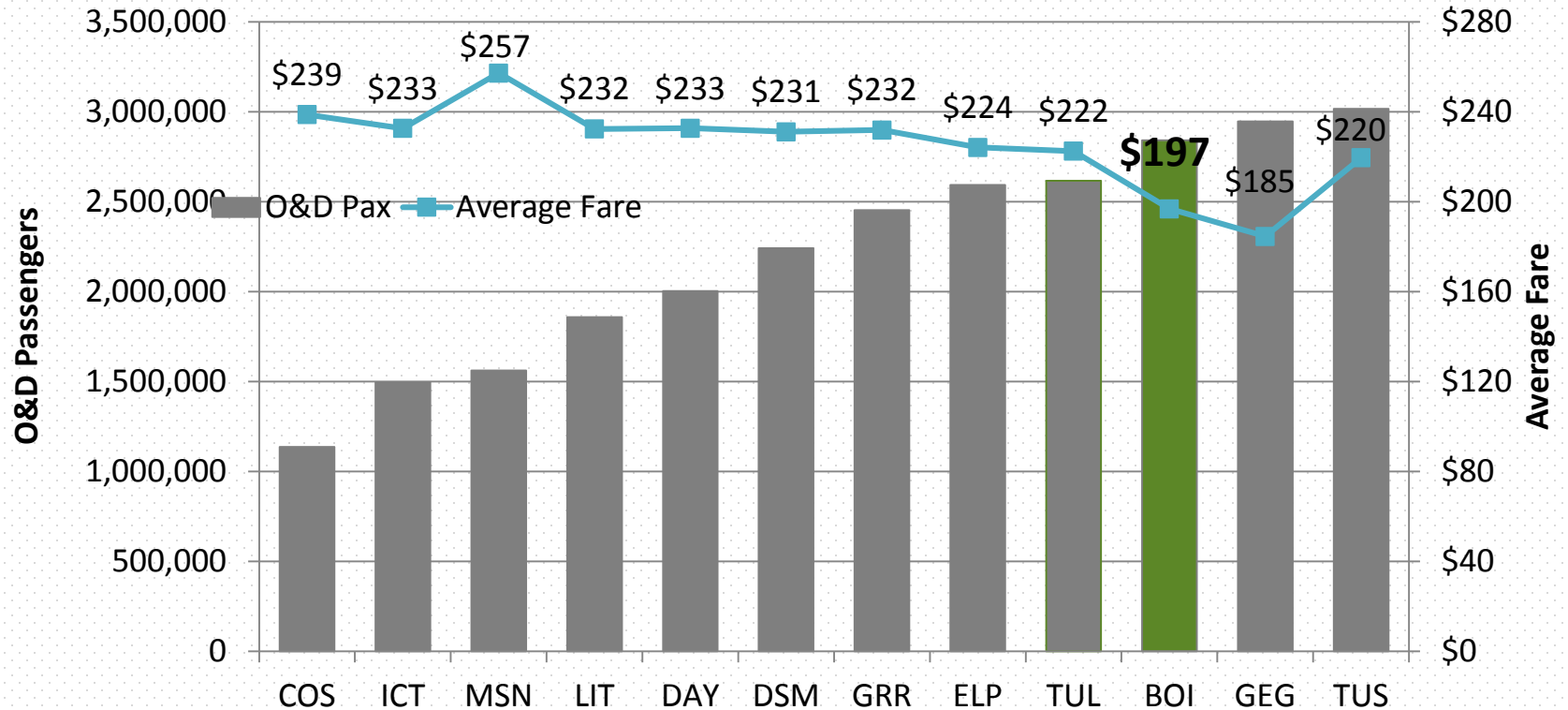
Year	Quarter	Airline Market Share						
		AS	WN	UA	DL	AA	G4	Other
2014	Q1	25%	27%	20%	18%	7%	1%	1%
	Q2	26%	27%	20%	18%	7%	1%	1%
	Q3	26%	25%	20%	18%	7%	2%	1%
	Q4	27%	25%	20%	18%	7%	2%	1%
2015	Q1	28%	24%	20%	18%	7%	1%	1%
	Q2	28%	25%	20%	18%	7%	1%	1%
	Q3	28%	24%	20%	19%	7%	1%	1%
	Q4	28%	24%	20%	19%	7%	1%	1%

SEAT PER CAPITA COMPARISONS



Boise consistently exceeds all comparison markets except Spokane in seats per capita.

O&D PASSENGER AND AIRFARE COMPARISONS



**Of the comparison markets,
only Spokane had a lower average fare than Boise.**

YEAR-OVER-YEAR COMPARISONS

Airport	2015 MSA Population	YE 4Q 2015			YOY Change		
		# of Nonstop Destinations	O&D Pax	Seats	# of Nonstop Destinations	O&D Pax	Seats
Spokane, WA	535,724	11	2,946,513	1,863,842	(1)	4%	4%
Des Moines, IA	612,105	19	2,240,495	1,360,784	1	1%	(1%)
Madison, WI	641,517	12	1,561,856	1,017,730	(1)	(2%)	(0%)
Wichita, KS	644,881	11	1,494,640	977,505	(1)	2%	(3%)
Boise, ID	669,050	19	2,840,472	1,858,087	0	6%	6%
Colorado Springs, CO	692,680	10	1,136,073	695,546	(2)	(7%)	(11%)
Little Rock, AR	741,333	15	1,857,293	1,189,720	(1)	(5%)	(13%)
Dayton, OH	802,736	15	2,003,021	1,310,128	(1)	(8%)	(6%)
El Paso, TX	853,868	12	2,593,305	1,722,242	0	1%	(12%)
Tulsa, OK	976,063	20	2,615,984	1,792,268	1	(1%)	(5%)
Tucson, AZ	1,022,185	15	3,016,718	1,884,861	0	(3%)	(4%)
Grand Rapids, MI	1,034,670	23	2,453,105	1,493,696	(1)	8%	7%

BOI passengers and seats have increased at a higher percentage than all other compare markets except Grand Rapids.

Upcoming Items

- June 13-15: Jumpstart Air Service Development Conference
- June 21: General Aviation Barbecue
- July 7: Commission Meeting Canceled
- July 31 – August 2: AAAE Airfield and Facilities Management Conference hosted in Boise
- August 4: Next Commission Meeting

