



# January Commission Presentation

## *Director's Report*

Rebecca Hupp  
Boise Airport Director

JANUARY 5, 2017

# Airport Operations Update

- **December 5**  
Participated in FAA's Safety Risk Management Panel for SMGCS.
- **December 31**  
Airport security system upgrade project officially completed.
- Numerous snow removal incidents. First time activating new MB-5 SRE in winter ops.



# Snow Removal Overview



- **December 23-24:** 7.7" of snowfall
- No incidents
- Always had at least one runway open



# December Runway Closures

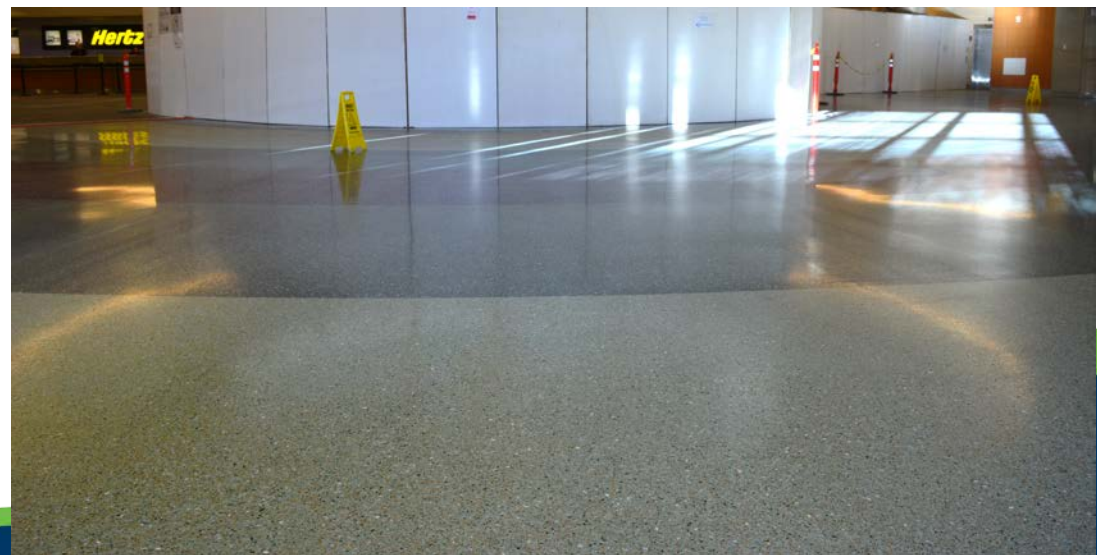
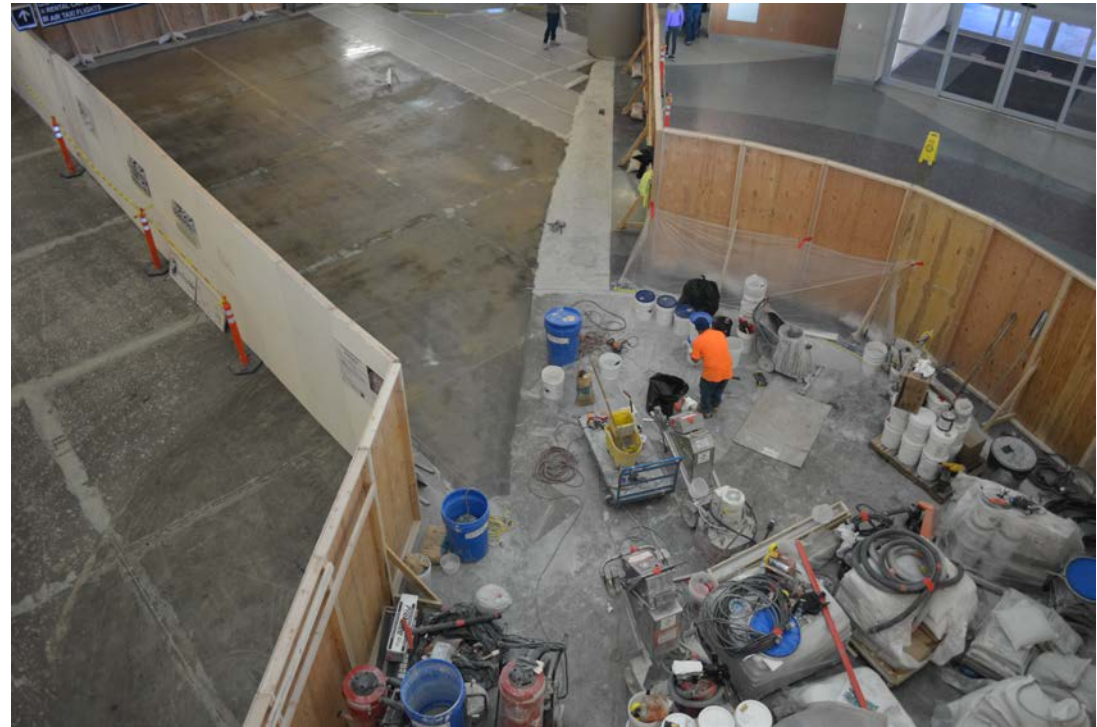
- **December 8, 14-16, 19, 23-25**  
Brief alternating runway closures for snow removal
- **December 27: 10L/28R, 8:00 A.M. – 4:00 P.M.**  
Closed for snow cleanup
- **December 28: 10L/28R, 8:00 A.M. – 12:00 P.M.**  
Closed for snow cleanup
- **December 28: 10R/28L, 1:00 P.M. – 4:00 P.M.**  
Closed for snow cleanup
- **December 29: 10R/28L, 8:00 A.M. – 4:00 P.M.**  
Closed for snow cleanup



*There are no runway closures scheduled in January.*

# Rotunda Floor

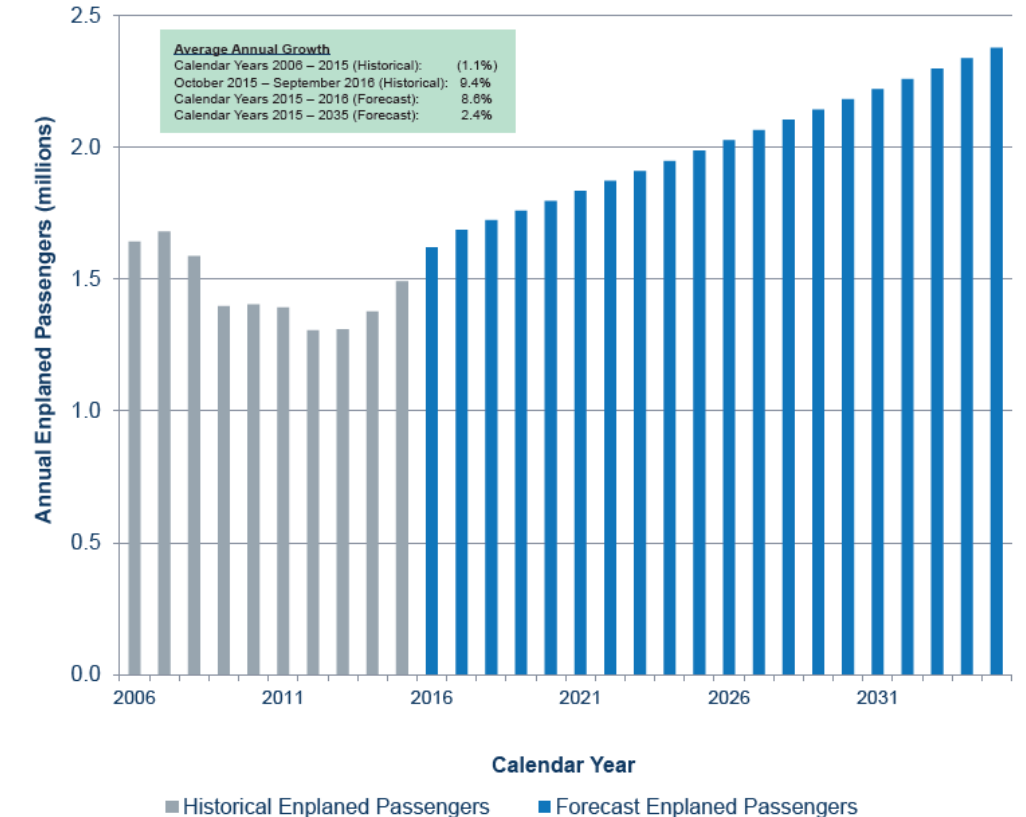
- Phases 1 & 2 are complete
- Phase 3 to be completed in mid-January
- Phase 4 will be the centerpiece
- Did not interrupt holiday traffic
- Expected completion is late February



# Master Plan Open House #2

December 14, 2016

- Master Plan Open House Focus:
  - Inventory of existing facilities
  - Forecasts of future aviation activity
- New format allowed for more one-on-one conversations
- Noise and military questions were addressed in a separate room
- IDANG members attended the open house
- **Noise Compatibility Program Open House, January 25**



Preliminary Draft BOI Forecast Results – SUBJECT TO CHANGE

# Alaska Airlines Headquarters Visit

- Rebecca Hupp visited Alaska Airlines' Headquarters in Seattle
- Discussed current service, future opportunities and the acquisition of Virgin America
- Overall, Alaska Airlines is very satisfied with Boise and is open to exploring new possibilities



# Gowen Field Makes F-35 Shortlist

- Boise's Gowen Field is one of five national guard bases considered for F-35 fighter jets
- Two bases will be selected
- Each base will receive 18-24 jets
- Aircraft would arrive in 2021 or 2022





# 23<sup>rd</sup> Best Performing Large City

- Milken Institute listed Boise as the 23<sup>rd</sup> best performing large city in the country
- The study notes two key growth factors; one-year wage growth and short-term job growth
- The study also cites Micron and other tech industries within Boise as a growth indicator



Boise City, ID

*(Gained 10 places)*

JOB GROWTH (2010-2015)	26TH
JOB GROWTH (2014-2015)	44TH
WAGE GROWTH (2009-2014)	39TH
WAGE GROWTH (2013-2014)	15TH
SHORT-TERM JOB GROWTH (AUG. 2015-AUG. 2016)	14TH
HIGH-TECH GDP GROWTH (2010-2015)	57TH
HIGH-TECH GDP GROWTH (2014-2015)	120TH
HIGH-TECH GDP CONCENTRATION (2015)	26TH
NUMBER OF HIGH-TECH INDUSTRIES (LQ>=1) (2015)	143RD

# VIP Escort for Officer Kevin Holtry

- Boise Police Officer Kevin Holtry will move to Denver for recovery
- His flight is the morning of January 5
- There will be a police escort for Officer Holtry
- VIP ceremony at Turbo Air



# Employee Recognition

**Thomas Anderson**  
Airport Employee of the Year



**Inflight Catering**  
Airport Team of the Year



**Josh LeBlanc**  
Paradies Manager of the Year

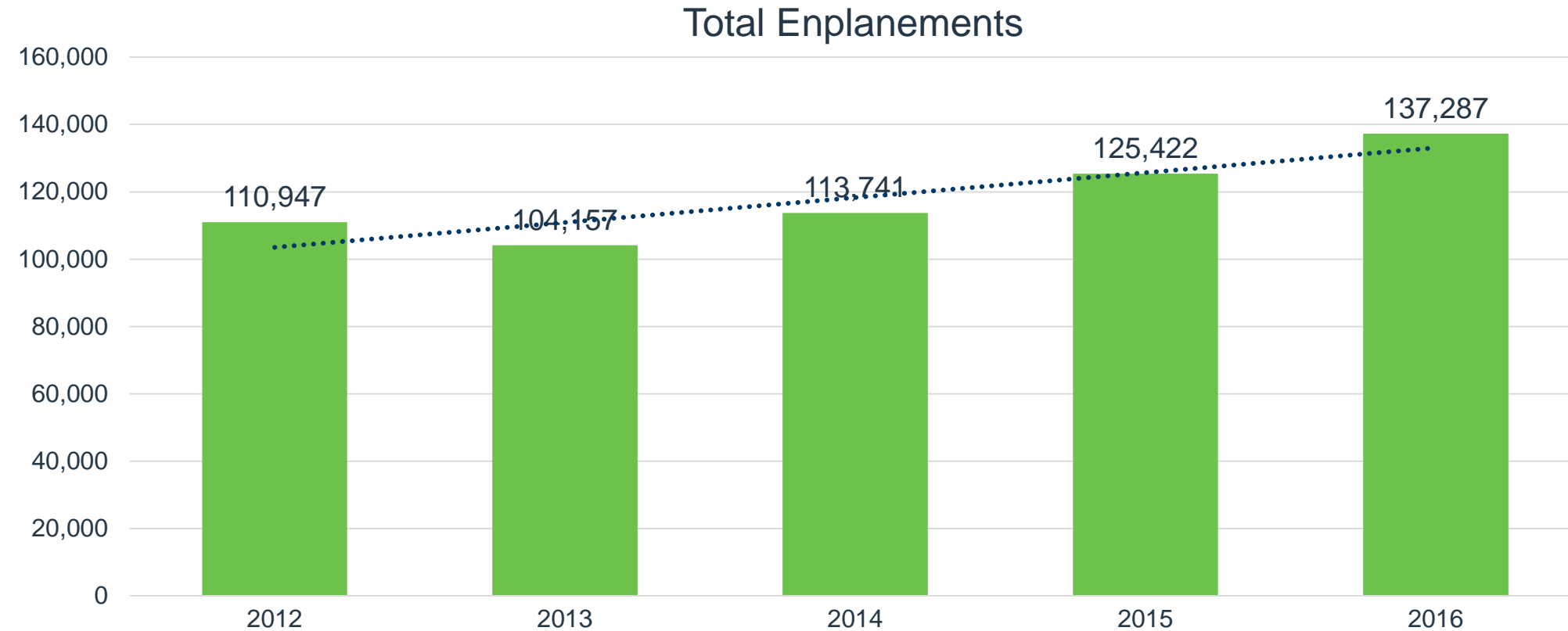


<b>Top 10 Operating Revenue Description</b>	<b>FY 2017</b>	<b>FY 2016</b>	<b>\$ Change</b>	<b>% Change</b>
Parking Lot	\$ 1,760,588	\$ 1,684,306	\$ 76,282	5%
Rental Car Concession	\$ 834,425	\$ 772,187	\$ 62,238	8%
Terminal Rent – Airlines	\$ 616,642	\$ 641,508	\$ (24,866)	-4%
Industrial Land Rent	\$ 567,729	\$ 533,719	\$ 34,010	6%
Signatory Airline Landing Fees	\$ 514,729	\$ 492,176	\$ 22,553	5%
Terminal Concession – Food/Beverage	\$ 168,740	\$ 148,188	\$ 20,552	14%
Terminal Concession – Retail	\$ 161,349	\$ 118,551	\$ 42,798	36%
Landings/Freight	\$ 120,066	\$ 135,767	\$ (15,701)	-12%
Terminal Rent – Non airline	\$ 82,942	\$ 84,523	\$ (1,581)	-2%
Advertising	\$ 80,452	\$ 50,123	\$ 30,329	61%
<b>Total Top 10 Operating Revenue</b>	<b>\$ 4,907,662</b>	<b>\$ 4,661,048</b>	<b>\$ 246,614</b>	
Other Operating Revenue	\$ 454,356	\$ 436,925	\$ 17,431	
<b>Total Operating Revenue</b>	<b>\$ 5,362,018</b>	<b>\$ 5,097,973</b>	<b>\$ 264,045</b>	<b>5%</b>

<b>Top 10 Operating Expenses Description</b>	<b>FY 2017</b>	<b>FY 2016</b>	<b>\$ Change</b>	<b>% Change</b>
Personnel	\$ 1,280,028	\$ 1,185,942	\$ 94,086	8%
Fire Service	\$ 422,192	\$ 406,659	\$ 15,533	4%
Policing Service	\$ 421,015	\$ 397,082	\$ 23,933	6%
Indirect Cost Reimbursement	\$ 221,212	\$ 144,653	\$ 76,559	53%
R&M – Terminal	\$ 116,600	\$ 18,216	\$ 98,384	540%
Parking Management	\$ 114,595	\$ 111,856	\$ 2,739	2%
R/M – Structural/Electrical/Plumbing	\$ 85,482	\$ 79,156	\$ 6,326	8%
R/M – Fleet Management	\$ 73,692	\$ 56,658	\$ 17,034	30%
Minor Equipment	\$ 65,584	\$ 11,719	\$ 53,865	460%
Power	\$ 57,019	\$ 60,990	\$ (3,971)	-7%
<b>Total Top 10 Operating Expenses</b>	<b>\$ 2,857,419</b>	<b>\$ 2,472,931</b>		
Other Operating Expense	\$ 394,099	\$ 301,772	\$ 92,327	31%
<b>Total Operating Expense</b>	<b>\$ 3,251,518</b>	<b>\$ 2,774,703</b>	<b>\$ 476,815</b>	<b>17%</b>

# November Enplanements

*Up 9% November 2016 over November 2015*



# 2016 YTD Total Passengers

*Up 9% YTD*



# Upcoming Events

Date	Event
January 25, 2017	Airport Noise Compatibility Program Open House
February 2, 2017	Next Commission Meeting Briefing on Fuel Pipeline Proposal
April 27, 2017	Boise Metro Chamber Business After Hours hosted by Boise Airport and Idaho National Guard