



# September Commission Report

## *Director's Update*

Given by Rebecca Hupp, Airport Director  
Boise Airport

SEPTEMBER 6, 2023

# East Parking Garage Now Open!



- BOI celebrated the opening of the new East Parking Garage on Tuesday, August 22<sup>nd</sup> with a ribbon-cutting ceremony
- The garage opened that evening, adding 1,100 additional parking spaces within walking distance to the terminal



# Employee Parking Garage Construction



- Formwork was being installed for parapet on elevator/stair tower
- Formwork continues to be installed for level 4 CIP walls of the NW Tower
- Bumper walls on the 5th level were receiving rebar and formwork



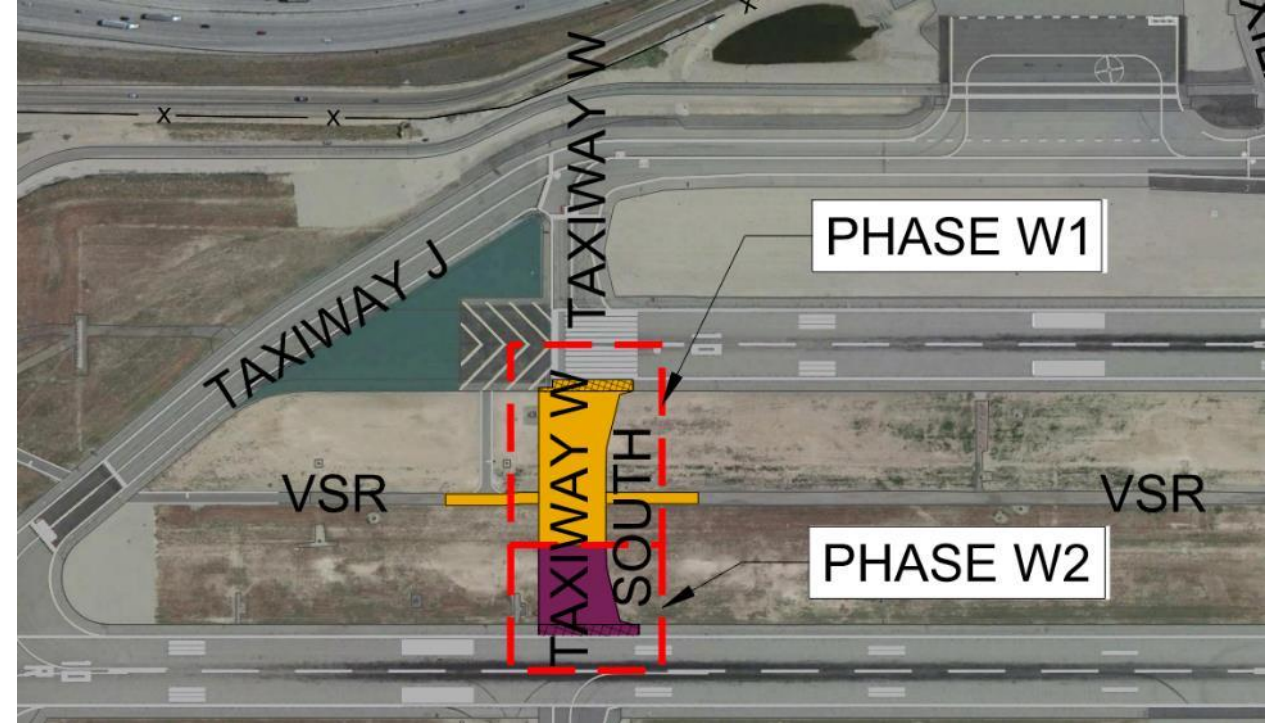
# Taxiway Whisky

## Taxiway W Phase 1

- Construction on phase 1 started June 12th and concluded on August 24th
- Runway 10L was opened on August 24th

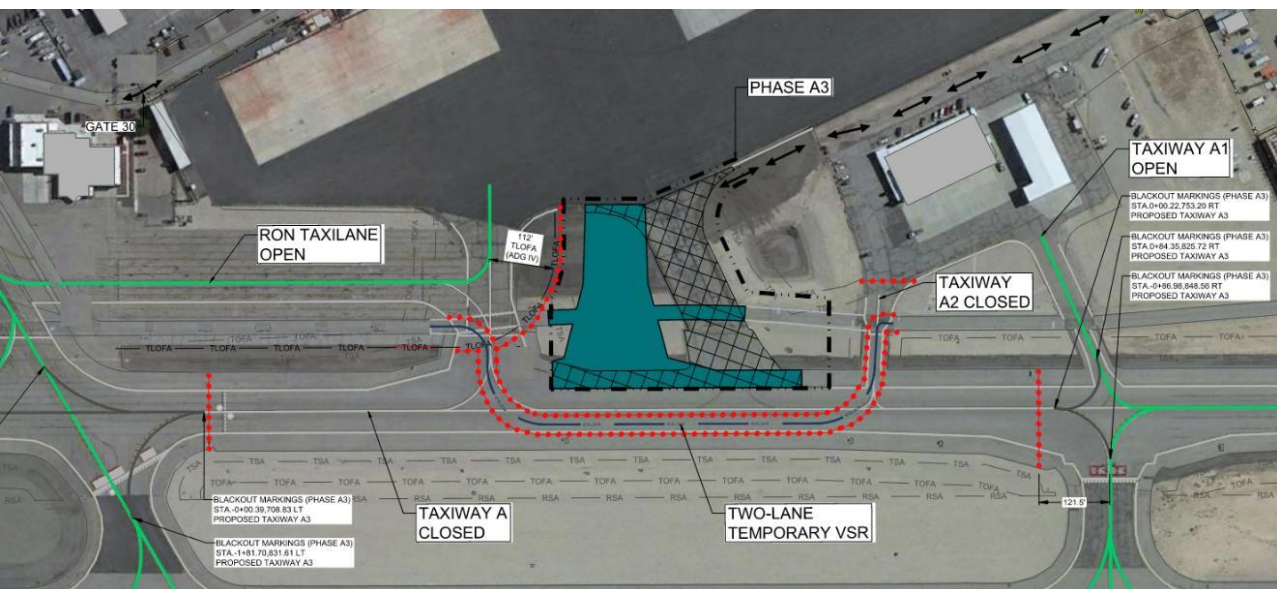
## Taxiway W Phase 2

- Construction on Phase 2 started September 5th and is expected to take 40 calendar days
- Runway 10R will be closed due to construction
- Excavation to begin September 6th



# Taxilane A3 Construction

- Construction started June 26th
- All asphalt paving has been completed
- Pavement Markings to be completed August 31st
- Expected full Taxilane opening Early September





# Taxilane N Construction

- Tie-in to Taxiway A and existing Taxilane N was complete on August 24
- South portion of the vehicle service road is completed with project continuing through September with relocation of the service road east of existing Taxilane N
- Taxilane N, N1, and N2 to be charted October 5, 2023
- Taxilane is an enabling project for additional corporate hangar construction



# SE Hangar Access Road

- Construction started July 31st and is expected to take 70 calendar days
- Asphalt paving completed August 30th
- Lighting, site grading and fencing to be completed over the forthcoming weeks
- Service road will provide access to future hangar sites





# Harvard St Closure Project

- As part of a land lease agreement with the Guard, we are closing Harvard St to the public
- Phase 2 is underway and will be complete by end of September
- Project includes:
  - Ed Stimpson Way cul-de-sac
  - New ATCT access gate
  - Relocation of Ed Stimpson Memorial marker





# New Deputy Directors



**Sean Briggs**

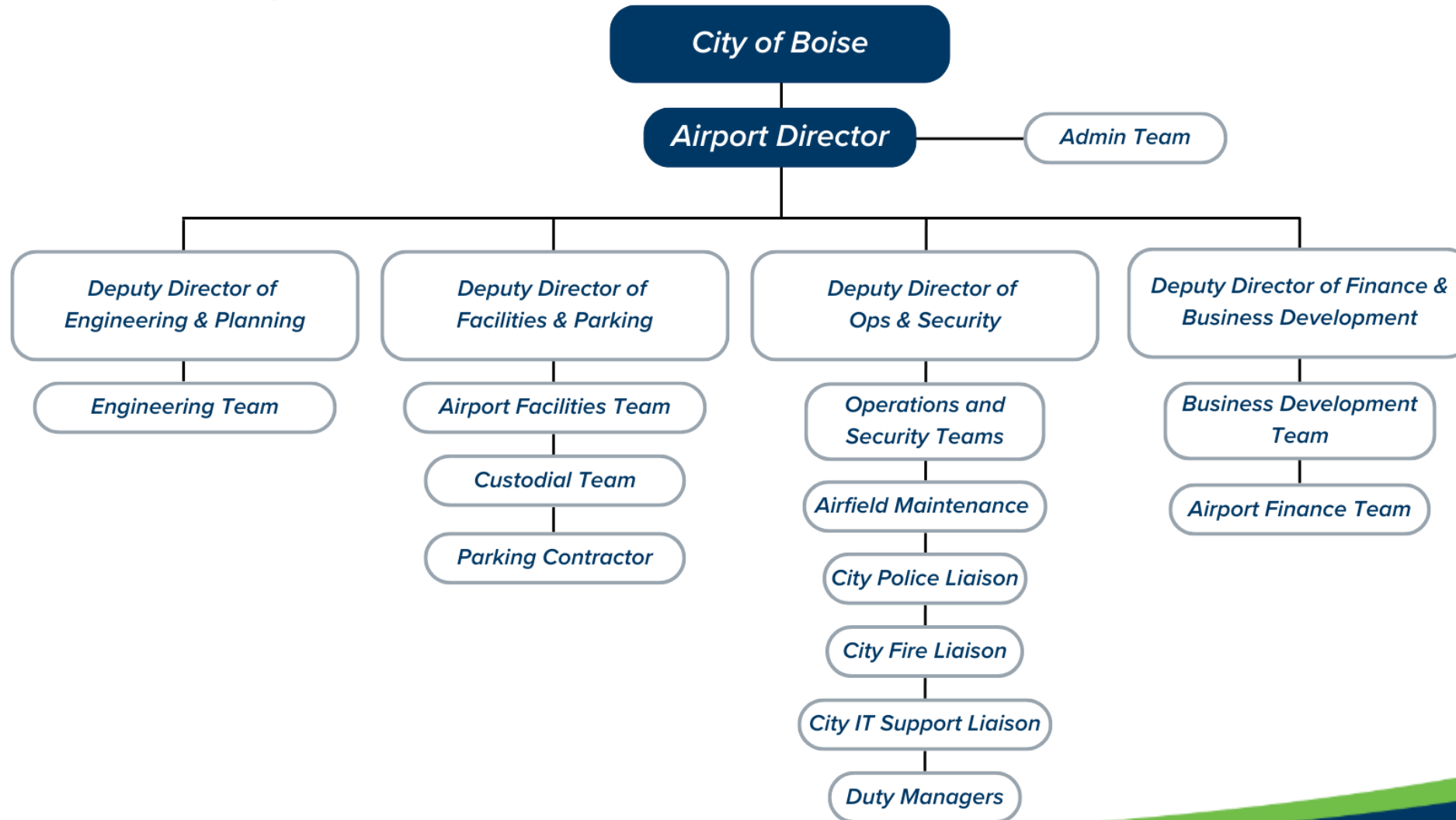
Deputy Director of Parking  
and Landside Facilities



**Beth Sumner**

Deputy Director of Engineering  
and Planning

# New Organizational Structure





# Gowen Thunder

- The Idaho National Guard hosted Gowen Thunder August 26<sup>th</sup> and 27<sup>th</sup>
- The Boise Airport worked with the airlines for over 6 months to adjust their schedules to accommodate the air show, but we did still see some delays and diverss caused by the TFR
- **Gowen Thunder had an estimated \$8.7 million economic impact and drew 120,000 unique visitors, 30% of whom were from out of town**
  - About 40% of those who traveled to Boise (14,400 people) stayed overnight



# Aviation Worker Screening

- In an effort to comply with upcoming requirements from the TSA, the Boise Airport is contracting a security vendor to provide screening for airport workers at certain locations in the terminal
- Employees will be subject to screening of both person and property in their possession
- Deadline for medium-hub airports to comply with this mandate is September 25, 2024

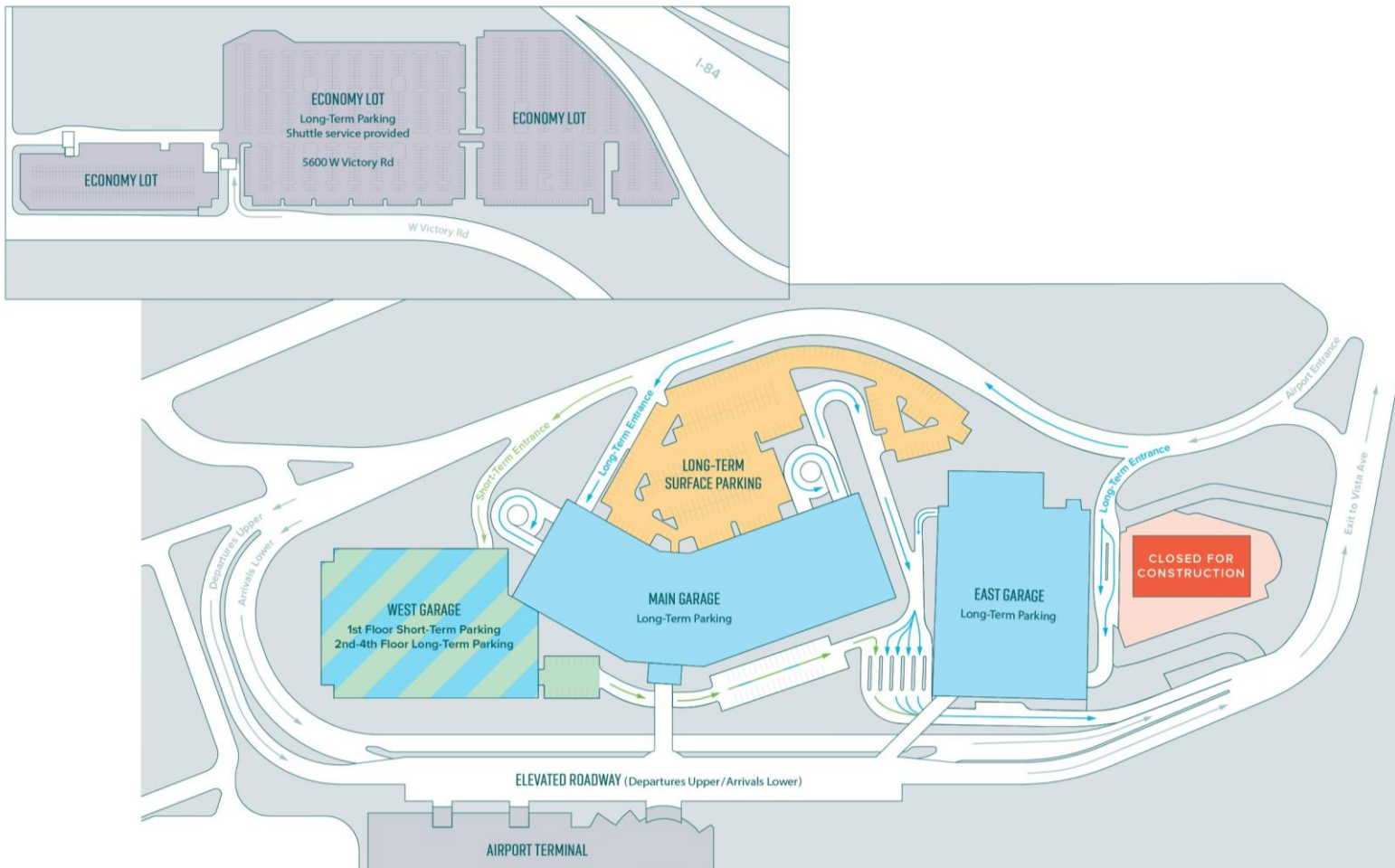




# Parking Rate Changes Effective 10/1

City Council has approved the following adjustments to Airport Parking Rates:

- Economy Lot: \$10/day
- Long-Term Surface: \$14/day
- Long-Term Garage: \$17/day
- Short-Term Garage: \$25/day



# Parking Management RFP

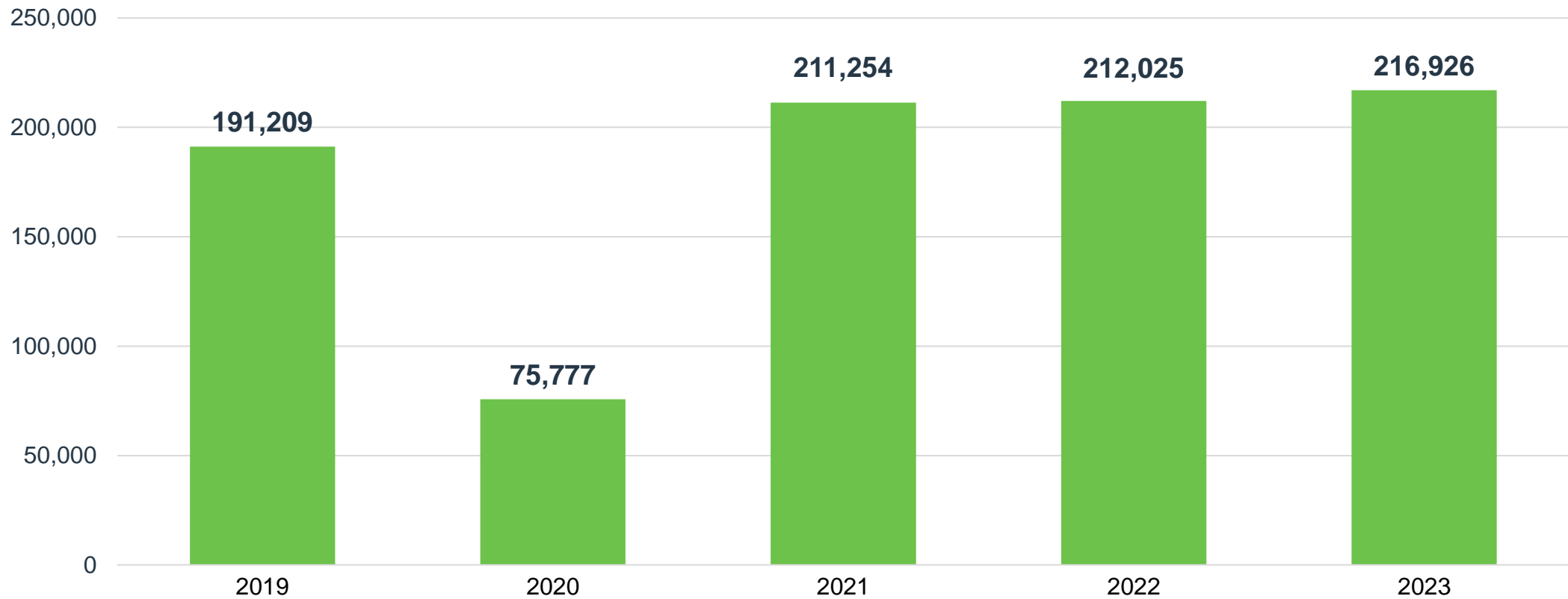
- The Airport issued an RFP for qualified firms to provide on-site parking management services of our parking facilities
- The Airport is reviewing responses now and is working towards having a firm selected by the end of the month





# July Enplanements

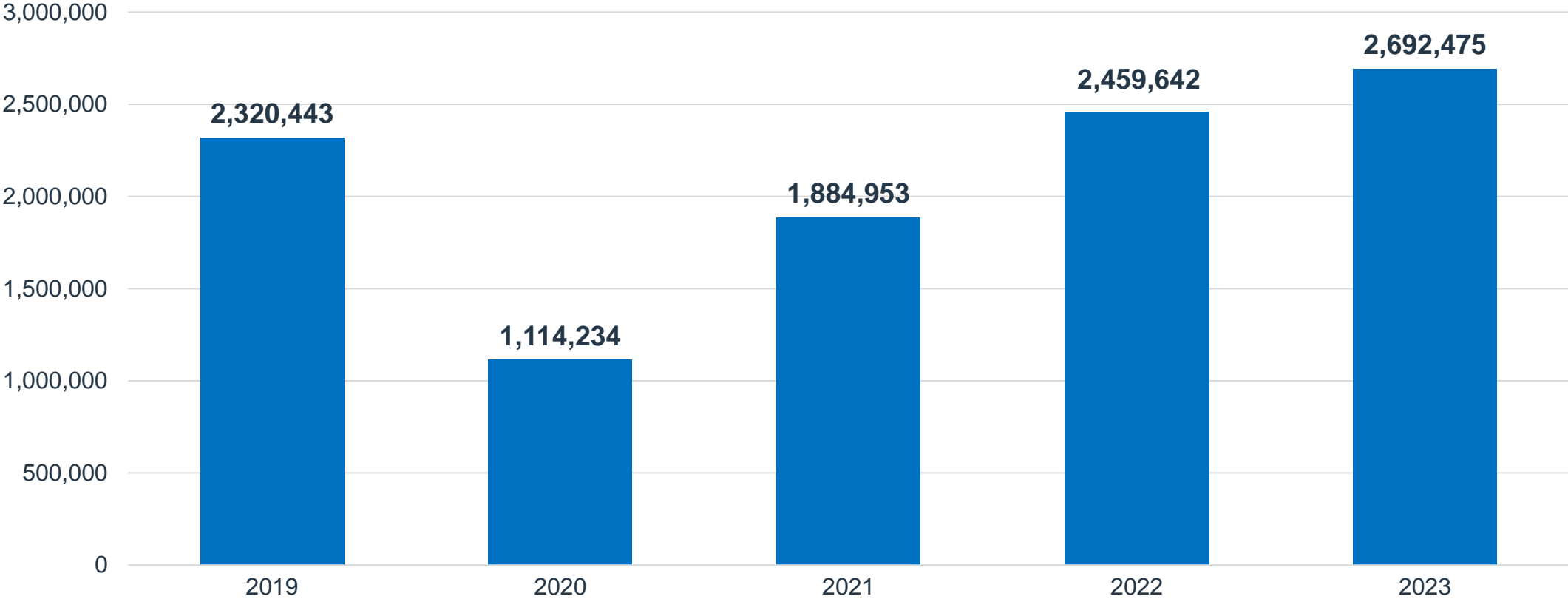
*Up 2% from July 2022*



# 2023 Total Passengers (through July)

*Up 9% over 2022*

Total Passengers





Top 10 Operating Revenue Description	FY 2023	FY 2022	\$ Change	% Change
Parking Lot	\$ 13,692,829	\$ 12,036,395	\$ 1,656,434	14%
Rental Car Concession	\$ 4,994,866	\$ 4,729,412	\$ 265,454	6%
Signatory Airline Landing Fees	\$ 4,621,707	\$ 2,388,014	\$ 2,233,693	94%
Terminal Rent - Airlines	\$ 3,531,430	\$ 3,018,343	\$ 513,087	17%
Industrial Land Rent	\$ 3,418,045	\$ 3,305,693	\$ 112,352	3%
Landings/Freight	\$ 874,328	\$ 764,557	\$ 109,771	14%
Terminal Concessions – Retail	\$ 802,549	\$ 819,193	(\$ 16,644)	-2%
Terminal Concessions – Food/Beverage	\$ 800,190	\$ 960,781	(\$ 160,591)	-17%
Employee Parking Permits	\$ 526,642	\$ 466,000	\$ 60,642	13%
Terminal Rent – Non-Airlines	\$ 478,509	\$ 474,726	\$ 3,783	1%
<b>Total Top 10 Operating Revenue</b>	<b>\$ 33,741,095</b>	<b>\$ 28,963,114</b>	<b>\$ 4,777,981</b>	<b>--</b>
Other Operating Revenue	\$ 3,355,303	\$ 2,991,176	\$ 364,127	12%
<b>Total Operating Revenue</b>	<b>\$ 37,096,398</b>	<b>\$ 31,954,290</b>	<b>\$ 5,142,108</b>	<b>16%</b>

<b>Top 10 Operating Expenses Description</b>	<b>FY 2023</b>	<b>FY 2022</b>	<b>\$ Change</b>	<b>% Change</b>
Personnel	\$ 10,453,798	\$ 8,878,179	\$ 1,575,619	18%
Indirect Cost Reimbursement	\$ 3,569,171	\$ 3,138,487	\$ 430,684	14%
Parking Management	\$ 3,145,450	\$ 2,222,419	\$ 923,031	42%
Policing Service	\$ 2,756,848	\$ 2,756,848	\$ 0	0%
Fire Service	\$ 2,610,031	\$ 2,610,031	\$ 0	0%
R/M – Structural/Electrical/Plumbing	\$ 1,022,713	\$ 563,305	\$ 459,408	82%
Power	\$ 814,063	\$ 673,310	\$ 140,753	21%
Chemicals	\$ 789,293	\$ 451,875	\$ 337,418	75%
R/M – Fleet Management	\$ 413,434	\$ 455,988	(\$ 42,554)	-9%
Minor Equipment	\$ 391,952	\$ 183,423	\$ 208,529	114%
<b>Total Top 10 Operating Expenses</b>	<b>\$ 25,966,753</b>	<b>\$ 21,933,865</b>	<b>--</b>	<b>--</b>
Other Operating Expense	\$ 4,846,294	\$ 4,349,486	\$ 496,808	11%
<b>Total Operating Expense</b>	<b>\$ 30,813,047</b>	<b>\$ 26,283,351</b>	<b>\$ 4,529,696</b>	<b>17%</b>





# Boise Airport

[www.iflyboise.com](http://www.iflyboise.com)