



August Commission Presentation

Director's Report

Rebecca Hupp
Boise Airport Director

AUGUST 3, 2017

Airport Operations Update

- Activated Rapback - An advanced background check/vetting program through the Transportation Security Administration
- Participated in a winter operations peer review for Spokane Airport
- Operations team provided a tour for this year's ACE academy students
- Participated in the ID ANG MARE - Emergency Exercise



July Runway Closures

- July 12: 10R/28L, 7:30 A.M. – 3:00 P.M.
- July 13: 10L/28R, 8:00 A.M. – 9:00 A.M.
- July 18: 10L/28R, 9:30 A.M. – 10:30 A.M.
- July 19: 10L/28R, 7:30 A.M. – 3:00 P.M.
- July 26: 10L/28R, 7:30 A.M. – 3:00 P.M.
- July 27: 10R/28L, 7:30 A.M. – 3:00 P.M.

All closures were for tech ops work and airfield maintenance.

No scheduled runway closures for August



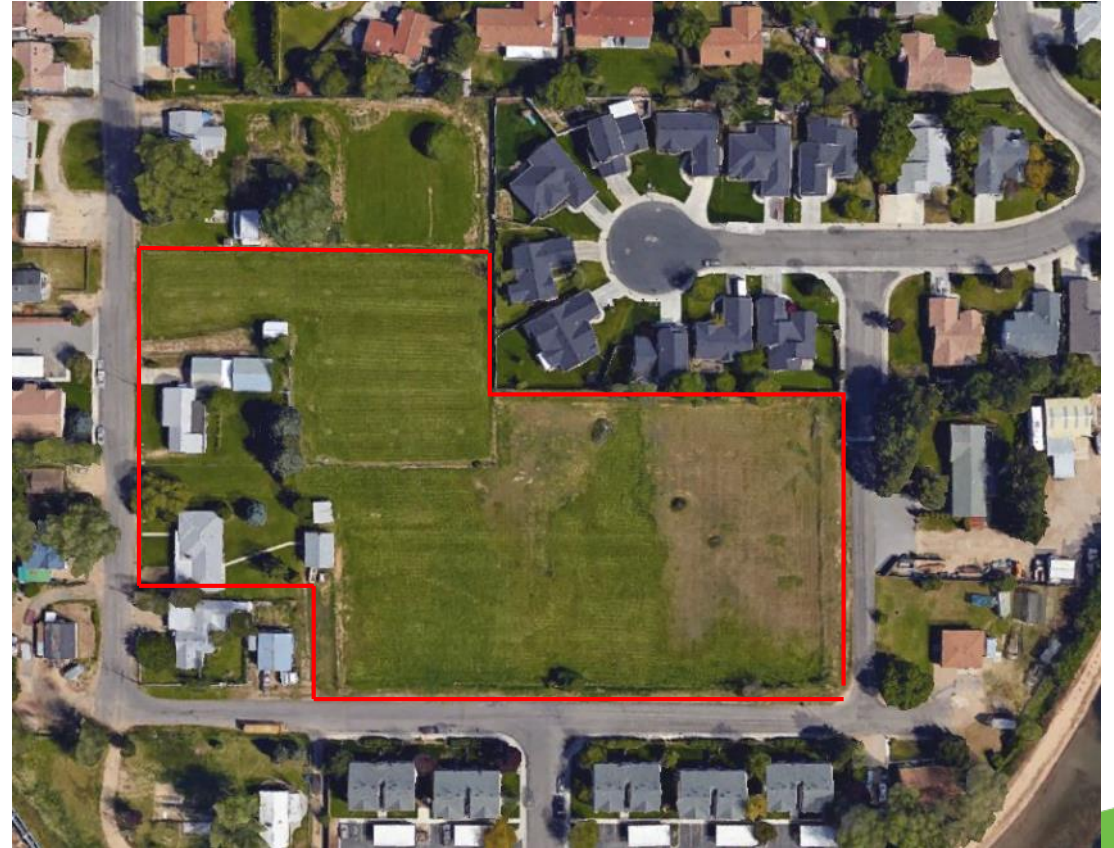
Taxiway Alpha Rehab Project

- Taxiway A is closed between Taxiways D and M.
- Phase 1 began July 31
- 40 day duration
- Multi-phase project expected to be completed in November



Pond Street Properties

- Parcels were voluntarily purchased in 2003 and 2005
- Homes have been vacant since 2009
- Land is leased to Boise Parks & Rec
- Global Gardens has an urban farm on the land
- Structures are being removed for expansion
- Turns non-compatible land use into a compatible land use



T-Hangar and Shade Hangar Lease Modifications

- Specify aircraft in hangar must be operational
- Tenants must have active security credentials
- Strengthen language regarding electrical usage
- Strengthen language to prohibit excessive storage
- Require all leases to have same insurance requirements
- Update cancellation policy



Jumpstart Conference Recap

- Met with 9 airlines
- All meetings were positive, airlines happy with current service

Alaska Airlines	JetBlue Airways
Allegiant Air	Spirit Airlines
American Airlines	Volaris
Southwest Airlines	WestJet
United Airlines	



Allegiant, Nonstop Phoenix Service

- Phoenix-Mesa Gateway Airport
- Service will begin October 6, 2017
- Twice weekly on Thursday and Monday
- 21st nonstop destination



Frontier Airlines Announces Return

- Frontier Airlines announces intention to return to Boise
- Nonstop service to Denver
- Expected to begin spring of 2018
- Hasn't been in the Boise market since 2011



Air Service Updates (June & July)

- American began Chicago Service
- Southwest began San Diego Service
- Alaska began mainline service to Seattle
- American added frequency to Dallas/Fort Worth



Wings For Autism

- July 22, 2017
- 59 families participated
- Organized by:
 - American Airlines
 - The Arc
 - Autism Society, Treasure Valley
- Gives those with autism a chance to practice airport procedures

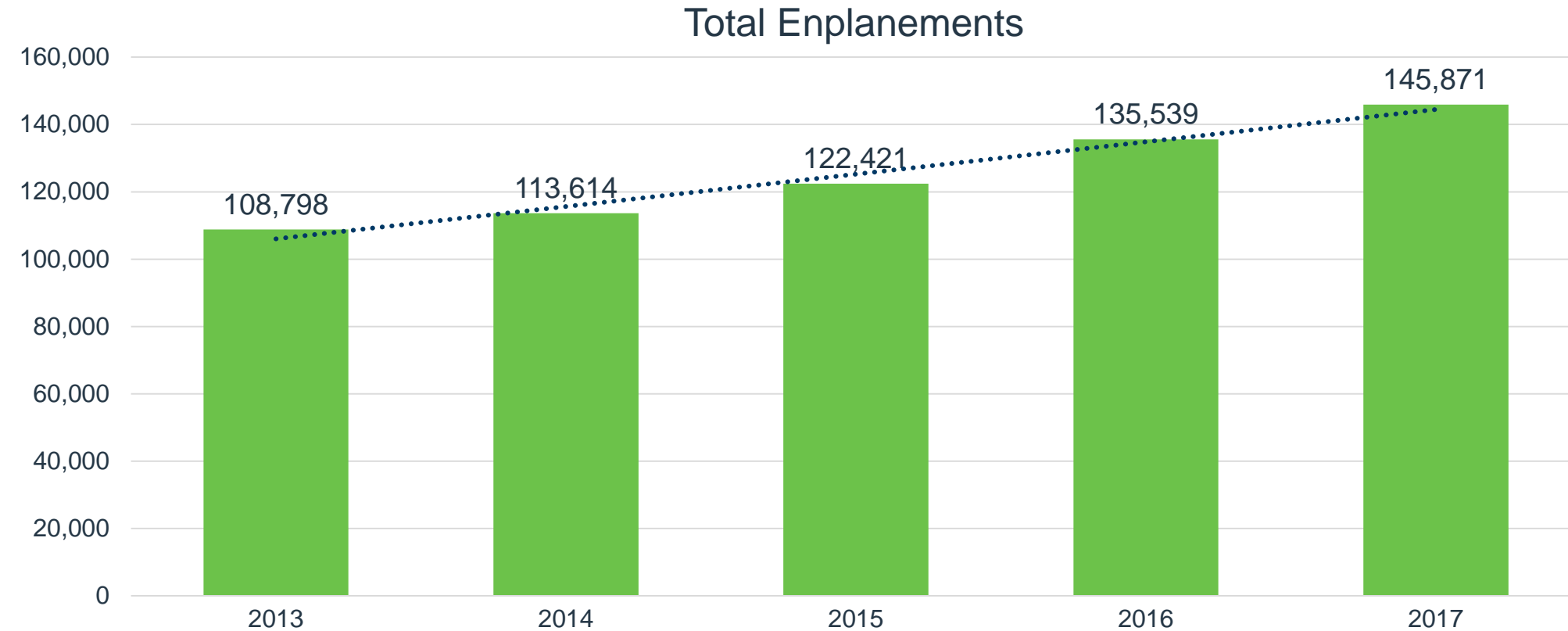


Top 10 Operating Revenue Description	FY 2017	FY 2016	\$ Change	% Change
Parking Lot	\$ 7,866,436	\$ 7,231,981	\$ 634,455	9%
Rental Car Concession	\$ 3,209,968	\$ 2,884,139	\$ 325,829	11%
Terminal Rent – Airlines	\$ 2,770,518	\$ 2,974,399	\$ (203,881)	-7%
Industrial Land Rent	\$ 2,588,656	\$ 2,462,970	\$ 125,686	5%
Signatory Airline Landing Fees	\$ 2,307,362	\$ 2,291,777	\$ 15,585	1%
Terminal Concession – Food/Beverage	\$ 785,364	\$ 706,004	\$ 79,360	11%
Terminal Concession – Retail	\$ 662,746	\$ 554,626	\$ 108,120	19%
Landings/Freight	\$ 567,303	\$ 517,006	\$ 50,297	10%
Terminal Rent – Non airline	\$ 366,657	\$ 375,685	\$ (9,028)	-2%
Advertising	\$ 314,356	\$ 255,608	\$ 58,748	23%
Total Top 10 Operating Revenue	\$ 21,439,366	\$ 20,254,195	\$ 1,185,171	
Other Operating Revenue	\$ 2,001,232	\$ 1,918,999	\$ 82,233	4%
Total Operating Revenue	\$ 23,440,598	\$ 22,173,194	\$ 1,267,404	6%

Top 10 Operating Expenses Description	FY 2017	FY 2016	\$ Change	% Change
Personnel	\$ 5,413,614	\$ 5,087,192	\$ 326,422	6%
Fire Service	\$ 1,899,863	\$ 1,829,964	\$ 69,899	4%
Policing Service	\$ 1,894,569	\$ 1,786,874	\$ 107,695	6%
Indirect Cost Reimbursement	\$ 940,725	\$ 784,716	\$ 156,009	20%
Parking Management	\$ 873,712	\$ 652,272	\$ 221,440	34%
Chemicals	\$ 787,378	\$ 702,795	\$ 84,583	12%
Management/Strategic Planning	\$ 604,808	\$ 11,673	\$ 593,135	5081%
Power	\$ 518,962	\$ 529,883	\$ (10,921)	-2%
R/M – Structural/Electrical/Plumbing	\$ 449,664	\$ 508,091	\$ (58,427)	-11%
R/M – Terminal	\$ 376,297	\$ 157,555	\$ 218,742	139%
Total Top 10 Operating Expenses	\$ 13,759,592	\$ 12,051,015	\$	
Other Operating Expense	\$ 2,545,894	\$ 2,384,993	\$ 160,901	7%
Total Operating Expense	\$ 16,305,486	\$ 14,436,008	\$ 1,869,478	13%

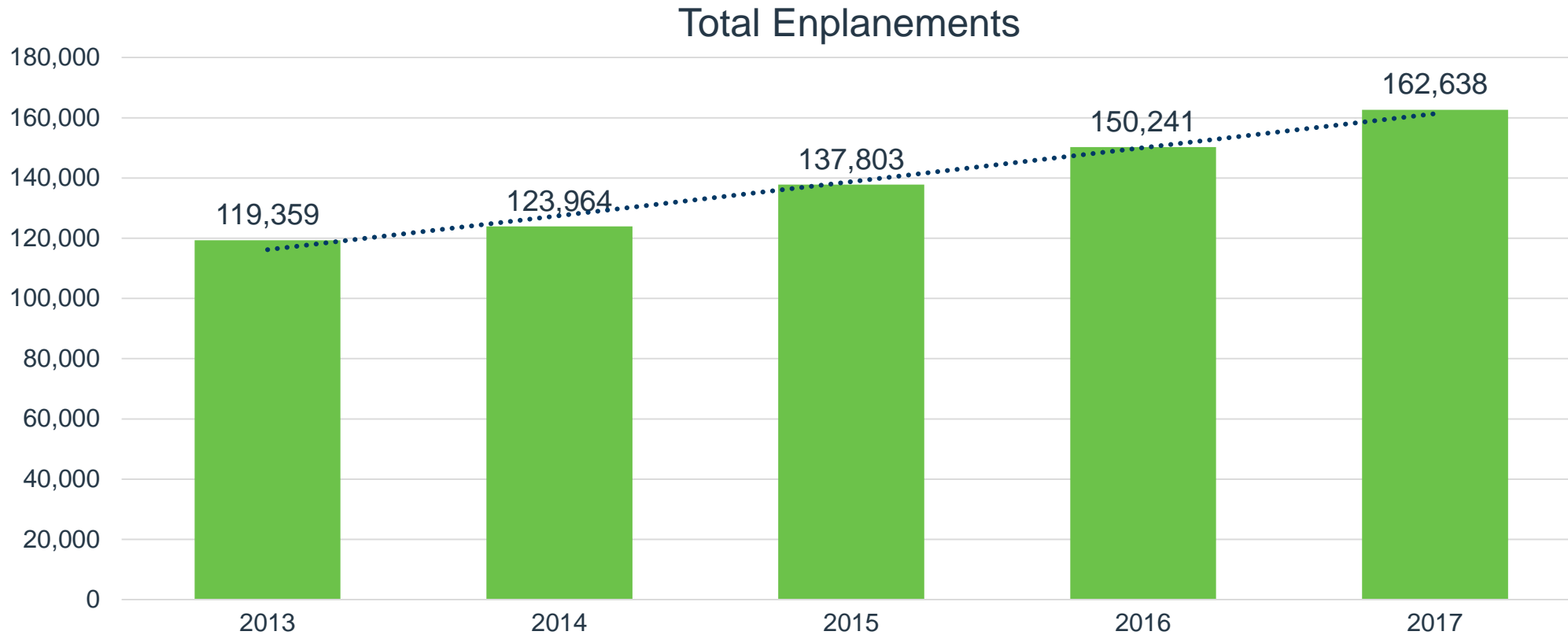
May Enplanements

Up 8% May 2017 over May 2016



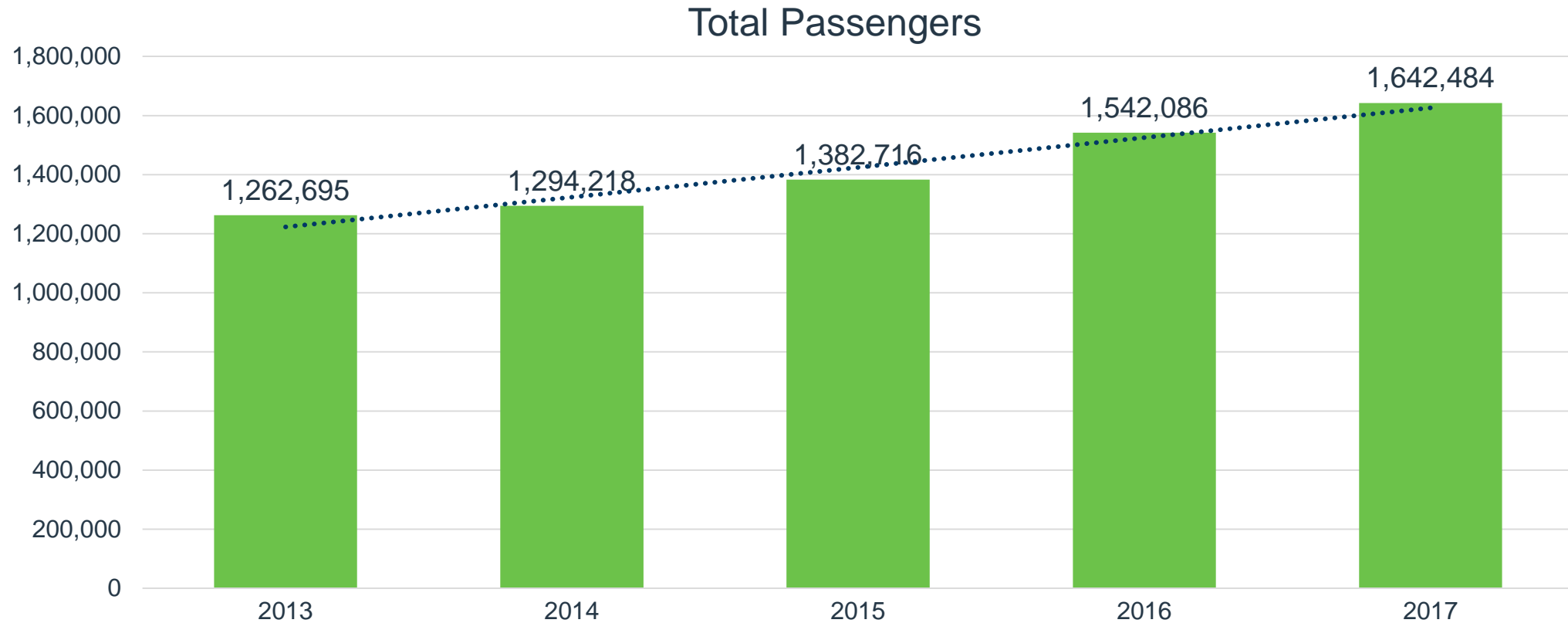
June Enplanements

Up 8% June 2017 over June 2016



2017 Total Passengers

Up 7% YTD, record number of passengers through June (2007: 1,611,744)



Upcoming Events

Date	Event
August 31, 2017	State of the city address
September 7, 2017	Next commission meeting
October 6, 2017	Allegiant begins service to AZA
October 14-15, 2017	Gowen Thunder Open House & Airshow