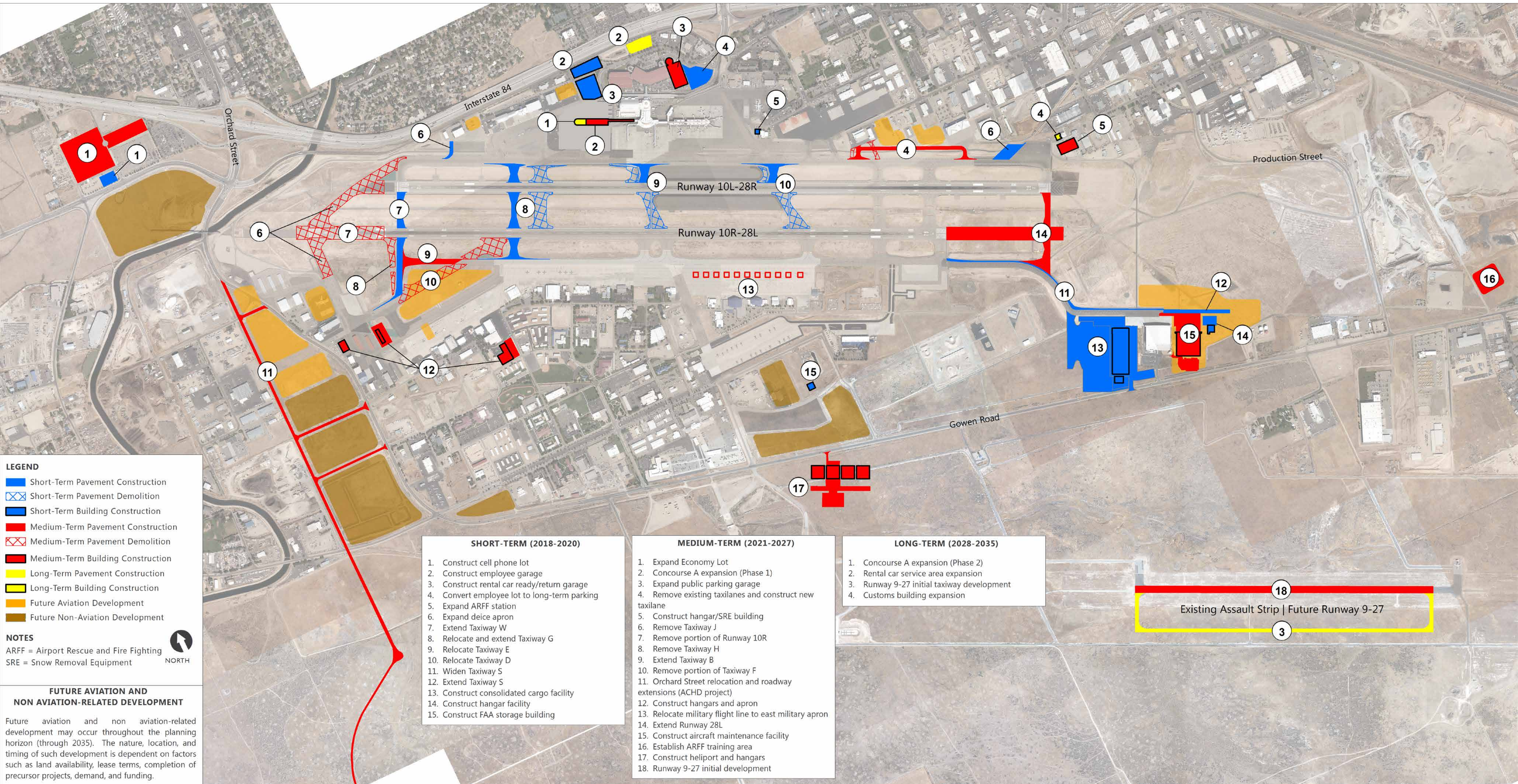


Conceptual Implementation Plan (2018-2035)



LEGEND

- Short-Term Pavement Construction
- ▨ Short-Term Pavement Demolition
- Short-Term Building Construction
- Medium-Term Pavement Construction
- ▨ Medium-Term Pavement Demolition
- Medium-Term Building Construction
- Long-Term Pavement Construction
- Long-Term Building Construction
- Future Aviation Development
- Future Non-Aviation Development

NOTES

ARFF = Airport Rescue and Fire Fighting
SRE = Snow Removal Equipment

FUTURE AVIATION AND NON AVIATION-RELATED DEVELOPMENT

Future aviation and non aviation-related development may occur throughout the planning horizon (through 2035). The nature, location, and timing of such development is dependent on factors such as land availability, lease terms, completion of precursor projects, demand, and funding.

- SHORT-TERM (2018-2020)**
1. Construct cell phone lot
 2. Construct employee garage
 3. Construct rental car ready/return garage
 4. Convert employee lot to long-term parking
 5. Expand ARFF station
 6. Expand deice apron
 7. Extend Taxiway W
 8. Relocate and extend Taxiway G
 9. Relocate Taxiway E
 10. Relocate Taxiway D
 11. Widen Taxiway S
 12. Extend Taxiway S
 13. Construct consolidated cargo facility
 14. Construct hangar facility
 15. Construct FAA storage building

- MEDIUM-TERM (2021-2027)**
1. Expand Economy Lot
 2. Concourse A expansion (Phase 1)
 3. Expand public parking garage
 4. Remove existing taxilanes and construct new taxilane
 5. Construct hangar/SRE building
 6. Remove Taxiway J
 7. Remove portion of Runway 10R
 8. Remove Taxiway H
 9. Extend Taxiway B
 10. Remove portion of Taxiway F
 11. Orchard Street relocation and roadway extensions (ACHD project)
 12. Construct hangars and apron
 13. Relocate military flight line to east military apron
 14. Extend Runway 28L
 15. Construct aircraft maintenance facility
 16. Establish ARFF training area
 17. Construct heliport and hangars
 18. Runway 9-27 initial development

- LONG-TERM (2028-2035)**
1. Concourse A expansion (Phase 2)
 2. Rental car service area expansion
 3. Runway 9-27 initial taxiway development
 4. Customs building expansion

Existing Assault Strip | Future Runway 9-27