



April Commission Presentation

Director's Report

Rebecca Hupp A.A.E.
Boise Airport Director

APRIL 4, 2019

March Runway Closures

- **Mar. 29: 10R/28L, 8:00am – 10:00am**
FAA Tech Ops Work
- **Mar. 29: 10L/28R, 10:00am – Noon**
FAA Tech Ops Work



T-Hangar Relocation Update

- Concrete pads have been poured
- Ramp is being paved this week
- Hangar C tenants will relocate their aircraft on April 15 to Turbo Air Hangar
- Anticipated Hangar C relocation completed by end of April
- Hangar A will follow thereafter



Economy Parking Lot Open

- The airport opened the economy parking lot for two weeks during spring break
- The economy lot also was opened weekly, Tuesday – Thursday



Airport Purchased Two New Shuttles

- With increased shuttle activity from economy lot, airport needed additional shuttles
- One older shuttle will be retired from the fleet
- Net increase of one shuttle



Airport Upgrade Media Coverage

- After a presentation to Boise City Council, the airport expansion project was shared on the following stations:
 - KTVB Channel 7
 - KIVI Channel 6/9
 - KBOI Channel 2
 - Idaho Statesman
 - Idaho Press
 - Boise State Public Radio
 - BoiseDev.com



National Recognition

- Ranked tenth in **Money.com's** "Top Airports in America"
- Ranked second in **InsureMyTrip's** list of best performing airports
 - The data relates to on-time performance, and comes from the U.S. Bureau of Transportation



Passenger Comments

“When I got my baggage I was confronted by unbelievable chaos caused by individuals trying to pick up arriving passengers. The pick up area was utter confusion. It was total congestion caused by the mingling of private cars, lyft cars, uber cars and some taxis.”

- Joseph



Kurt J Veit Guess they didn't use SECURITY AND SAFETY as one of the judging criteria. If they did I'm sure the BOISE CITY AIRPORT would rank LAST!
UNOCCUPIED VEHICLES, VEHICLES WAITING(blocking) AT THE CURB. THIS IS CLEARLY A... THREAT TO EVERYONES SAFELY.. THAT HAS BEEN SHOWN AT OTHER AIRPORTS AROUND THE WORLD ...TO BE DEADLY!!!
VERY LITTLE PRESENCES OF AUTHORITY TO ENFORCE ...POSTED LAWS!!!
THE BOISE AIRPORT IS A WORLD NEWS STORY/TRAGEDY WAITING TO HAPPEN, ITS JUST A MATTER OF TIME!!!
The Airport "management TEAM" needs to come OUT FROM BEHIND THEIR DESKS and COMES OUTSIDE AND PAY ATTENTION TO THE ...OTHER SIDE OF THE TERMINAL. GET A CLUE!!!

Like · Reply · Message · 2d · Edited

- In response airport operations along with Boise Police have stepped up patrol along the curb in an effort to mitigate these issues

TSA Funding – Potential Changes

- Proposals have been made to eliminate funding for two items
- TSA's Law Enforcement Officer Reimbursement Grant
- Transferring exit lane staffing responsibilities to the airport



Requests to Increase PFC Cap

- The Boise Airport joined industry colleagues in requesting an increase in the PFC
 - Current Cap: \$4.50
 - Requested Cap: \$8.50
- Requests sent to:
 - Idaho Congressional Delegation
 - Chairman of the U.S. House Committee on Transportation and Infrastructure

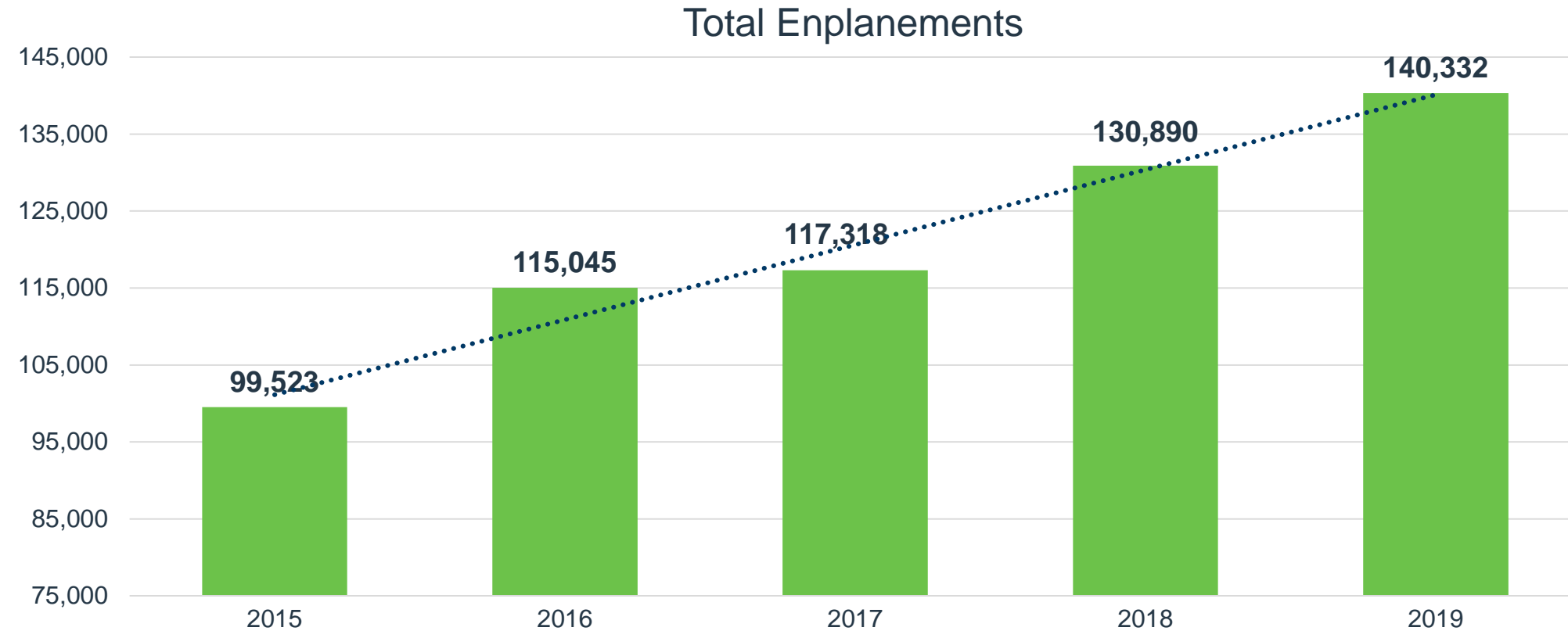


Top 10 Operating Revenue Description	FY 2019	FY 2018	\$ Change	% Change
Parking Lot	\$ 4,842,515	\$ 4,502,562	\$ 339,953	8%
Rental Car Concession	\$ 2,081,246	\$ 1,765,225	\$ 316,021	18%
Industrial Land Rent	\$ 1,523,734	\$ 1,495,202	\$ 28,532	2%
Signatory Airline Landing Fees	\$ 1,339,100	\$ 1,201,238	\$ 137,862	11%
Airline Baggage Fees	\$ 712,165	\$ 690,994	\$ 21,171	3%
Terminal Rent – Airlines	\$ 642,135	\$ 626,003	\$ 16,132	3%
Terminal Concession – Food/Beverage	\$ 532,057	\$ 480,334	\$ 51,723	11%
Terminal Concession - Retail	\$ 448,614	\$ 419,860	\$ 28,754	7%
Customer Facility Charge	\$ 444,372	\$ 428,670	\$ 15,702	4%
Employee Parking Permits	\$ 283,098	\$ 221,245	\$ 61,853	28%
Total Top 10 Operating Revenue	\$ 12,849,037	\$ 11,831,333	\$ 1,017,704	9%
Other Operating Revenue	\$ 1,406,450	\$ 1,476,895	\$ (70,445)	-5%
Total Operating Revenue	\$ 14,255,487	\$ 13,308,228	\$ 947,249	7%

Top 10 Operating Expenses Description	FY 2019	FY 2018	\$ Change	% Change
Personnel	\$ 3,164,334	\$ 3,082,347	\$ 81,987	3%
Fire Service	\$ 1,154,571	\$ 1,154,571	\$ 0	0%
Policing Service	\$ 1,097,042	\$ 1,288,107	\$ (191,065)	-15%
Parking Management	\$ 603,178	\$ 554,453	\$ 48,725	9%
Indirect Cost Reimbursement	\$ 593,418	\$ 574,343	\$ 19,075	3%
Power	\$ 343,256	\$ 307,832	\$ 35,424	12%
R/M – Structural/Electrical/Plumbing	\$ 250,487	\$ 215,263	\$ 35,224	16%
Chemicals	\$ 185,434	\$ 437,983	\$ (252,549)	-58%
R/M – Fleet Management	\$ 175,859	\$ 170,022	\$ 5,837	3%
Credit Card Fees	\$ 132,439	\$ 122,893	\$ 9,546	8%
Total Top 10 Operating Expenses	\$ 7,700,017	\$ 7,907,814	\$ (207,797)	-3%
Other Operating Expense	\$ 1,491,184	\$ 1,379,688	\$ 111,496	8%
Total Operating Expense	\$ 9,191,201	\$ 9,287,502	\$ (96,301)	-1%

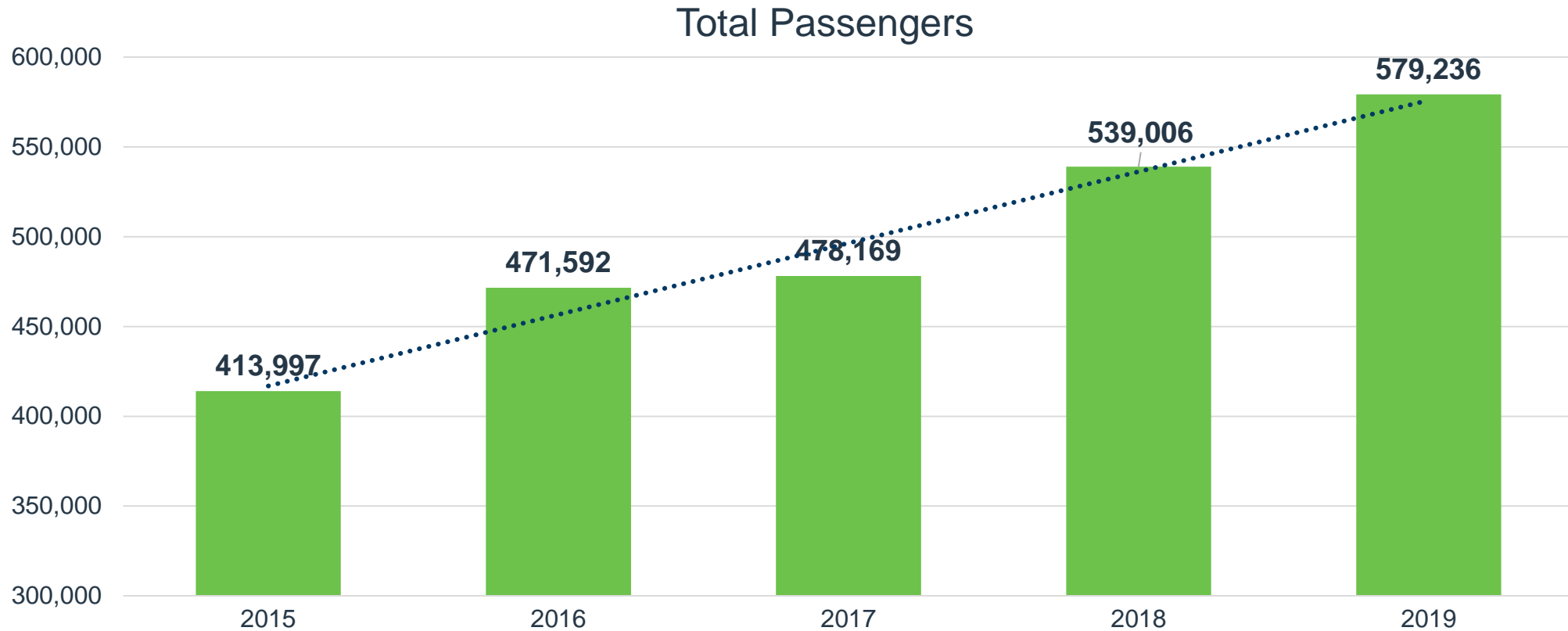
February Enplanements

Up 7% February 2019 over February 2018

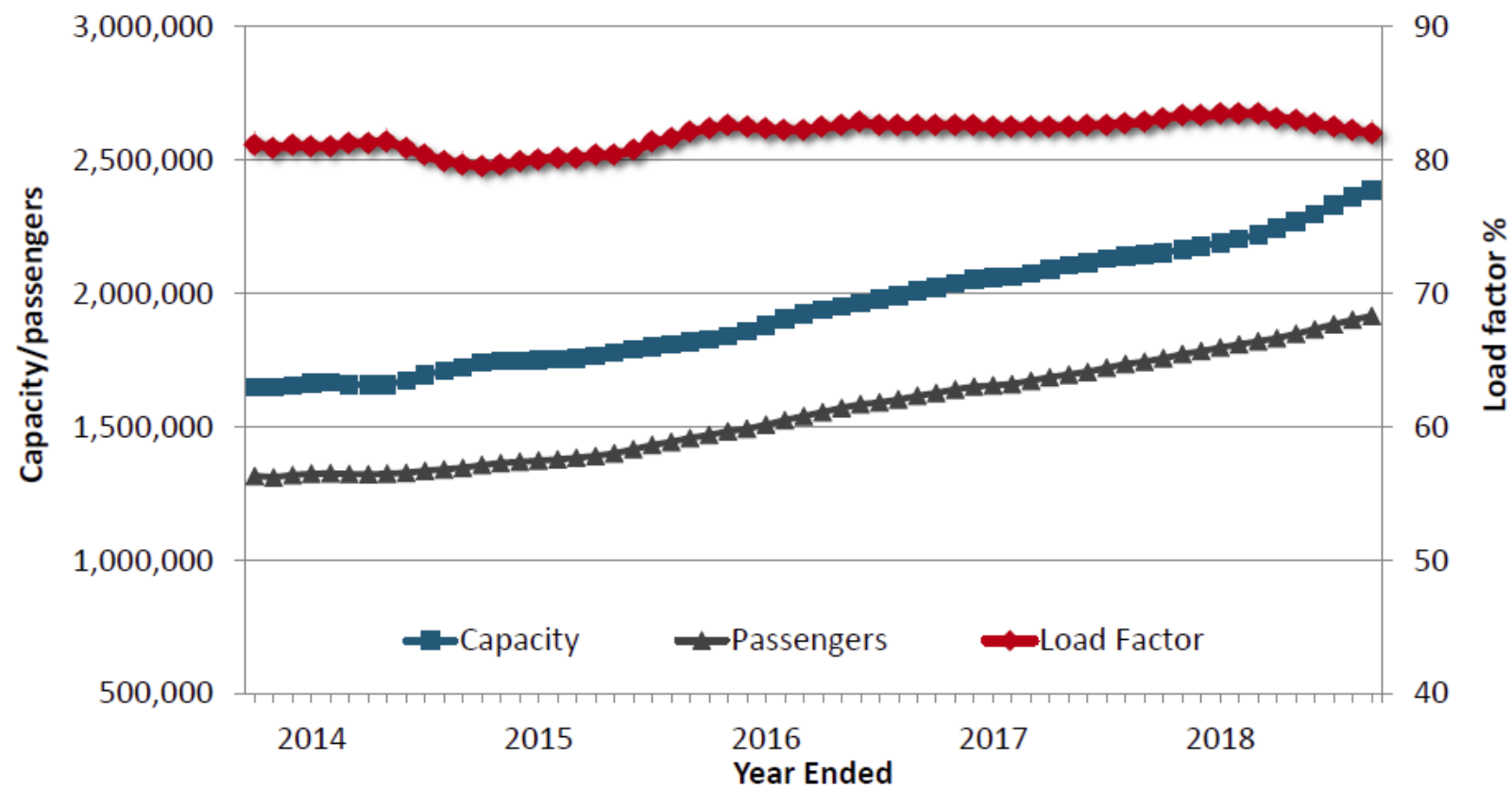


2019 Total Passengers

Up 7% over 2018



Boise Traffic/Capacity Trends



Year end September 2018 capacity was up 11%, while passengers were up 10%, leading to 1% point decline in the average load factor

Top Origination/Destination Markets

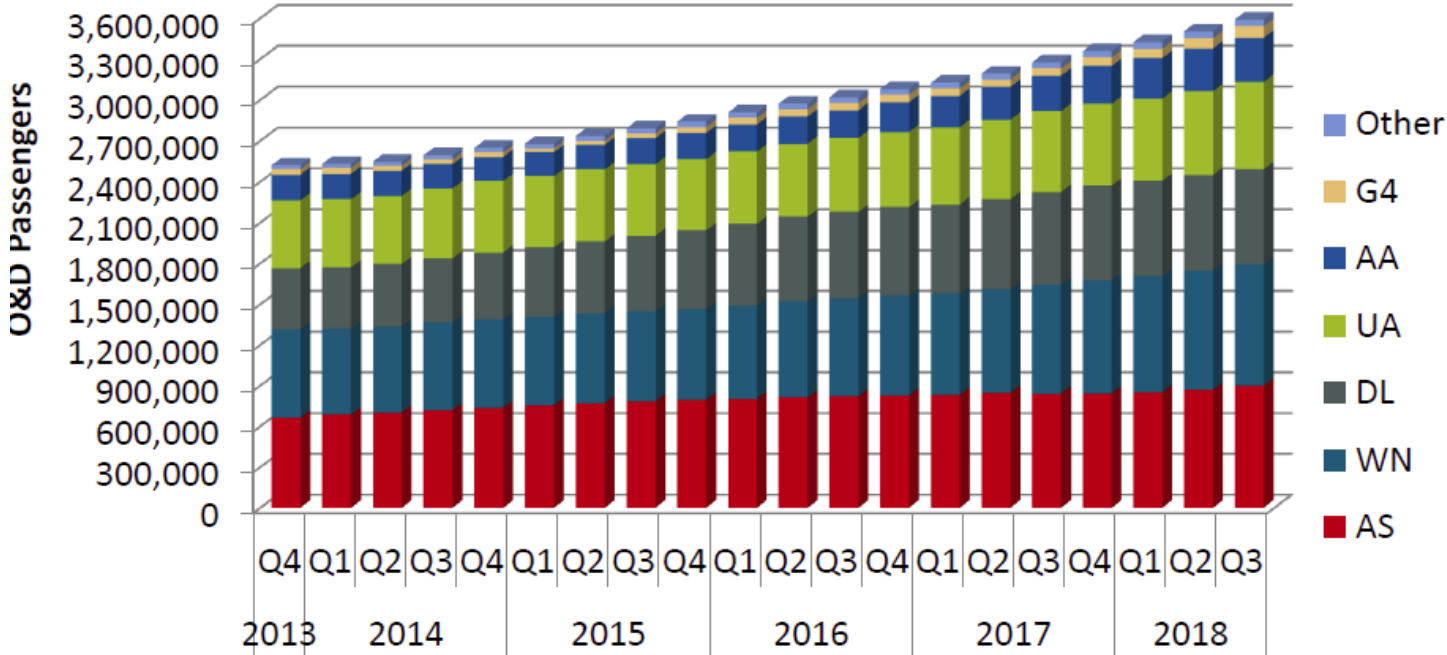
Rank	Destination	O&D Pax	O&D Revenue	Average Fare (\$)	Yield (¢)	% Change Since Q3 2017			
						Pax	Rev	Fare	Yield
1	Seattle, WA	95,251	9,416,660	99	24.8	17	10	(6)	(6)
2	Portland, OR	52,894	6,264,784	118	34.4	4	7	2	2
3	Denver, CO	48,577	6,140,249	126	19.5	19	4	(13)	(13)
4	Los Angeles, CA	41,850	5,189,751	124	18.4	9	17	7	7
5	Spokane, WA	39,437	3,294,046	84	29.1	9	17	8	8
6	San Diego, CA	38,524	4,332,182	112	15.0	7	14	6	6
7	Phoenix, AZ (PHX)	33,943	4,349,117	128	17.4	4	(1)	(6)	(6)
8	Sacramento, CA	31,261	3,020,049	97	22.1	15	10	(5)	(5)
9	Las Vegas, NV	30,778	3,168,687	103	19.8	2	(3)	(5)	(5)
10	Salt Lake City, UT	24,234	3,667,778	151	52.0	27	11	(13)	(13)
11	San Jose, CA	23,007	2,954,596	128	24.6	38	40	2	2
12	San Francisco, CA	21,934	3,844,916	175	33.6	11	4	(7)	(7)
13	Oakland, CA	19,691	2,667,179	135	26.5	7	(6)	(12)	(12)
14	Dallas, TX (DFW)	17,524	3,427,042	196	15.4	30	19	(8)	(8)
15	Orange County, CA	17,437	2,778,510	159	23.2	5	33	27	27
16	Chicago, IL (ORD)	17,180	4,384,644	255	17.8	20	29	8	8
17	Minneapolis, MN	16,312	3,388,451	208	18.2	6	(2)	(7)	(7)
18	Anchorage, AK	11,873	2,390,218	201	10.9	(1)	3	4	4
19	Atlanta, GA	10,697	2,577,213	241	13.1	23	18	(4)	(4)
20	Ontario, CA	10,198	1,426,063	140	21.2	2	16	13	13
Total/Average		993,412	181,946,528	183	16.2	11	9	(2)	(1)

The top 10 markets were similar to Q3 2017; however, Salt Lake City moved into the top 10, replacing San Francisco.

Boise Airline Market Share

Delta lost 1% point of market share to Frontier in the latest year-ended quarter

Year	Quarter	Airline Market Share							
		AS	WN	DL	UA	AA	G4	F9	Other
2016	Q4	27%	24%	21%	18%	7%	2%	0%	1%
2017	Q1	27%	24%	21%	18%	7%	2%	0%	1%
	Q2	26%	24%	21%	18%	8%	2%	0%	1%
	Q3	26%	24%	21%	18%	8%	2%	0%	1%
	Q4	25%	25%	21%	18%	8%	2%	0%	1%
2018	Q1	25%	25%	20%	18%	9%	2%	0%	1%
	Q2	25%	25%	20%	18%	9%	2%	0%	1%
	Q3	25%	25%	19%	18%	9%	2%	1%	1%



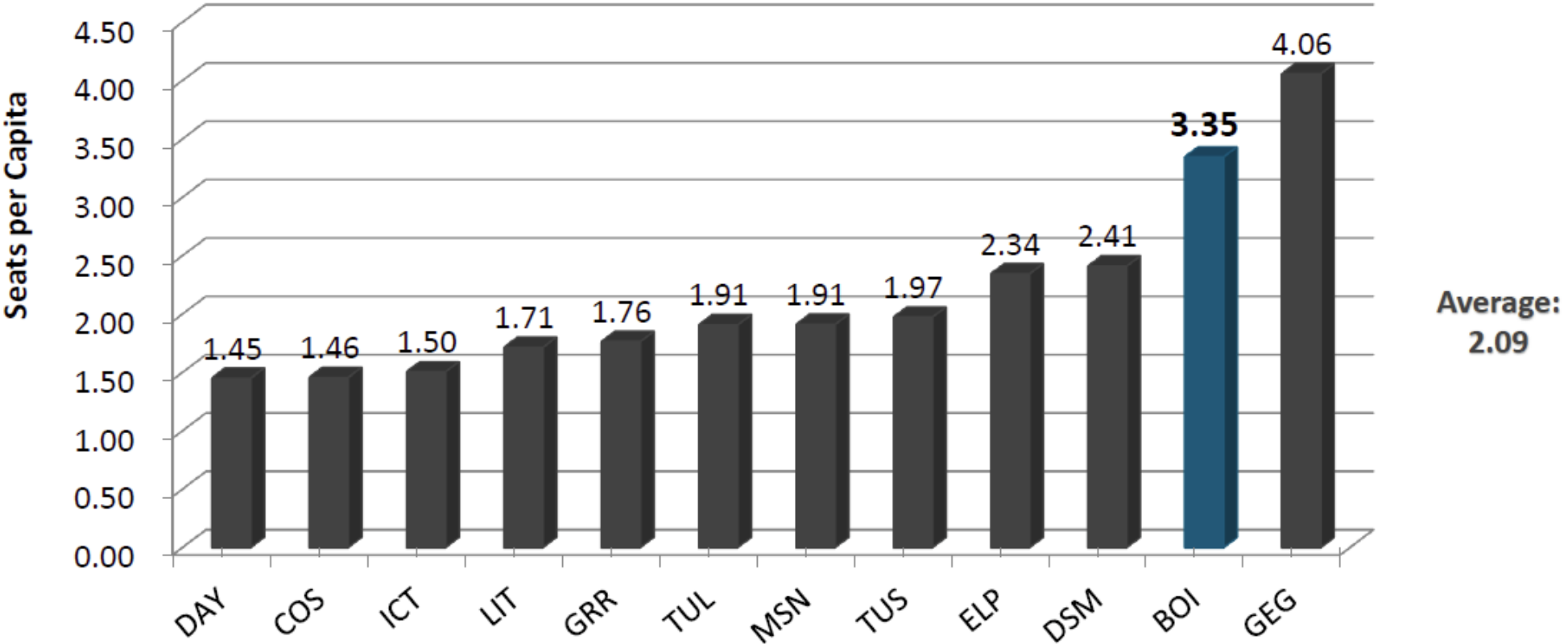
Boise Forward Looking Schedule

Destination	Airline	Year over Year Change %											
		Mar 2019		Apr 2019		May 2019		Jun 2019		Jul 2019		Aug 2019	
		Flts	Seats	Flts	Seats	Flts	Seats	Flts	Seats	Flts	Seats	Flts	Seats
Chicago, IL (MDW)	Southwest							(100%)	(100%)	(100%)	(100%)	(56%)	(56%)
Chicago, IL (ORD)	American	(100%)	(100%)	(100%)	(100%)	0%	(14%)	0%	(2%)	0%	0%	0%	3%
	United	0%	0%	0%	0%	0%	0%	0%	0%	0%	0%	0%	(2%)
Dallas, TX (DAL)	Southwest							(25%)	(25%)	0%	0%	0%	0%
Dallas, TX (DFW)	American	100%	(5%)	3%	(2%)	94%	94%	11%	11%	3%	3%	(2%)	(2%)
Denver, CO	Frontier	(100%)	(100%)	(100%)	(100%)	(100%)	(100%)	(50%)	(50%)	(36%)	(36%)	(31%)	(31%)
	Southwest	0%	10%	0%	(6%)	0%	(10%)	(10%)	(6%)	(13%)	(6%)	(3%)	14%
	United	(4%)	10%	(1%)	0%	3%	3%	4%	(0%)	5%	1%	(5%)	(1%)
Houston, TX (IAH)	United	0%	0%	0%	6%	0%	9%	0%	2%	0%	0%	0%	0%
Las Vegas, NV	Allegiant	0%	(6%)	(11%)	(16%)	(10%)	(13%)	0%	0%	(11%)	(11%)	0%	6%
	Southwest	0%	1%	0%	0%	0%	(0%)	5%	(2%)	7%	(1%)	2%	0%
Lewiston, ID	Alaska	(100%)	(100%)	(100%)	(100%)	(100%)	(100%)	(100%)	(100%)	(100%)	(100%)	(100%)	(100%)
Los Angeles, CA	Allegiant	22%	22%	(11%)	(11%)	13%	13%	0%	12%	44%	50%	33%	41%
	Delta	0%	0%	0%	0%	0%	0%	63%	63%	81%	81%	84%	84%
	United	100%	154%	100%	203%	100%	192%	100%	115%	100%	100%	100%	115%
Minneapolis, MN	Delta	0%	1%	0%	(2%)	0%	10%	(3%)	8%	(2%)	10%	5%	15%
Oakland, CA	Southwest	0%	4%	0%	(6%)	(2%)	(11%)	0%	(2%)	(2%)	(1%)	0%	1%
Phoenix, AZ (AZA)	Allegiant	0%	13%	0%	7%	(50%)	(47%)	(100%)	(100%)	(100%)	(100%)	(100%)	(100%)
Phoenix, AZ (PHX)	American	(54%)	(9%)	(51%)	(4%)	(50%)	(14%)	(50%)	(10%)	(49%)	(7%)	(39%)	(7%)
	Southwest	0%	1%	0%	(3%)	0%	(2%)	0%	4%	0%	6%	0%	3%

Boise Forward Looking Schedule

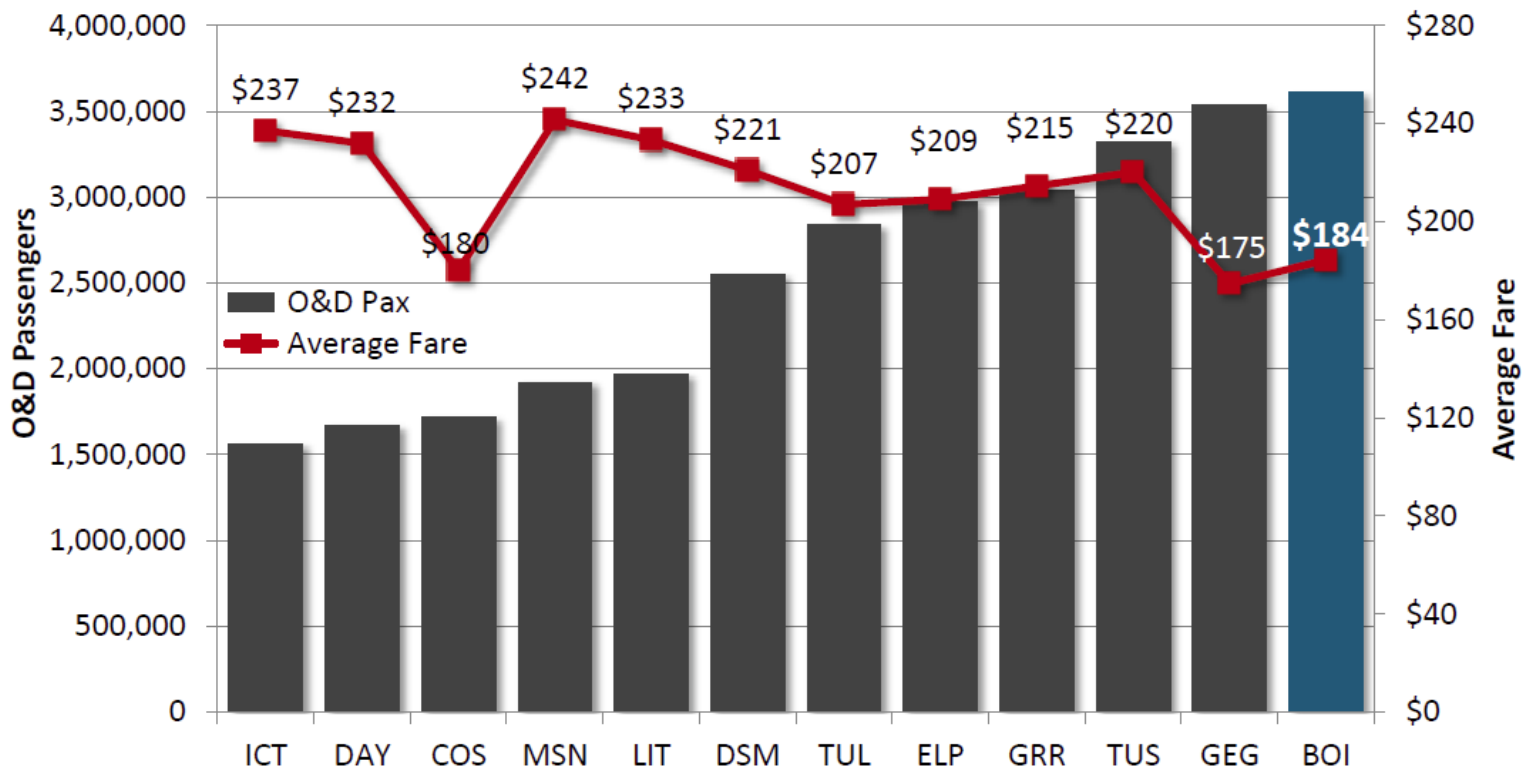
Destination	Airline	Year over Year Change %											
		Mar 2019		Apr 2019		May 2019		Jun 2019		Jul 2019		Aug 2019	
		Flts	Seats	Flts	Seats	Flts	Seats	Flts	Seats	Flts	Seats	Flts	Seats
Portland, OR	Alaska	11%	11%	17%	17%	15%	17%	10%	13%	11%	11%	8%	8%
Reno, NV	Alaska	(11%)	(11%)	0%	0%	0%	0%	16%	16%	15%	15%	11%	11%
Sacramento, CA	Alaska	(6%)	(6%)	0%	0%	0%	0%	0%	0%	0%	0%	0%	0%
	Southwest	0%	4%	0%	1%	0%	0%	0%	0%	0%	0%	0%	(12%)
Salt Lake City, UT	Alaska	(77%)	(77%)	(100%)	(100%)	(100%)	(100%)	(100%)	(100%)	(100%)	(100%)	(100%)	(100%)
	Delta	1%	2%	0%	0%	0%	5%	1%	10%	4%	12%	1%	10%
San Diego, CA	Alaska	0%	0%	0%	0%	0%	0%	0%	0%	0%	0%	0%	0%
	Southwest	0%	3%	0%	3%	0%	2%	0%	(1%)	0%	(3%)	0%	(1%)
San Francisco, CA	United	1%	2%	0%	1%	(6%)	(0%)	(3%)	(23%)	3%	(25%)	20%	7%
San Jose, CA	Alaska	0%	0%	0%	0%	0%	0%	0%	0%	0%	0%	0%	0%
	Southwest	100%	100%	17%	17%	(13%)	(13%)	57%	57%	81%	81%	74%	76%
Seattle, WA	Alaska	19%	22%	13%	10%	9%	4%	22%	14%	(1%)	(4%)	(0%)	(4%)
	Delta	6%	6%	6%	6%	5%	5%	3%	3%	3%	3%	2%	2%
Spokane, WA	Alaska	(13%)	(13%)	(11%)	(11%)	(9%)	(9%)	(4%)	(4%)	(1%)	(1%)	0%	0%
	Southwest	(2%)	(2%)	0%	0%	(2%)	(2%)	0%	0%	0%	0%	(2%)	(2%)
Total		0%	4%	(3%)	(1%)	(2%)	1%	(0%)	0%	(2%)	(1%)	1%	3%

Seats Per Capita Comparison



Boise consistently exceeds all comparison markets except Spokane (GEG) in seats per capita.

Origination/Destination Passenger and Airfare Comparison



BOI continued to surpass Tucson and Spokane in O&D passengers and has the lowest fare among all compare markets with the exception of Colorado Springs and Spokane.

Year-Over-Year Comparisons

Airport	2018 MSA Population	YE Q3 2018			YOY Change		
		# of Nonstop Destinations	O&D Pax	Seats	# of Nonstop Destinations	O&D Pax	Seats
Spokane, WA	565,178	16	3,533,966	2,293,660	0	10%	14%
Des Moines, IA	647,250	23	2,550,490	1,559,516	2	5%	1%
Wichita, KS	652,041	13	1,561,407	980,992	0	2%	1%
Madison, WI	662,071	15	1,919,891	1,264,855	2	9%	11%
Boise, ID	713,623	21	3,614,030	2,387,395	1	10%	11%
Colorado Springs, CO	727,328	18	1,715,686	1,058,578	3	14%	15%
Little Rock, AR	752,681	15	1,966,453	1,289,800	2	5%	4%
Dayton, OH	801,152	17	1,666,968	1,161,727	(1)	(10%)	(9%)
El Paso, TX	864,722	14	2,971,718	2,026,590	(1)	9%	8%
Tulsa, OK	1,001,296	25	2,838,885	1,908,976	6	8%	4%
Tucson, AZ	1,038,399	19	3,322,630	2,048,248	1	4%	2%
Grand Rapids, MI	1,063,958	24	3,037,818	1,875,890	0	14%	12%

BOI's seats and O&D passengers have increased at a faster rate than all other compare markets except Spokane, Colorado Springs and Grand Rapids

Upcoming Events

Date	Event
April 15-16, 2019	Idaho Airport Management Association Conference in Coeur d'Alene
April 16, 2019	Boise Convention & Visitors Bureau ROSE Awards
April 25, 2019	ARFF Station Grand Opening at 11:30 a.m.
May 2, 2019	Next Commission Meeting