



# November Commission Presentation

## *Director's Report*

Rebecca Hupp A.A.E.  
Boise Airport Director

NOVEMBER 7, 2019

# October Runway Closures

- **October 3: 10L/28R, 10:00am – 4:00pm**  
Required maintenance
- **October 29: 10R/28L 8:35am – 9:00am**  
FOD removal
- **October 30: 10L/28R, 9:30am – 1:00pm**  
Required maintenance
- **October 31: 10R/28L 9:30am – 1:00pm**  
Required maintenance



# Winter Operations

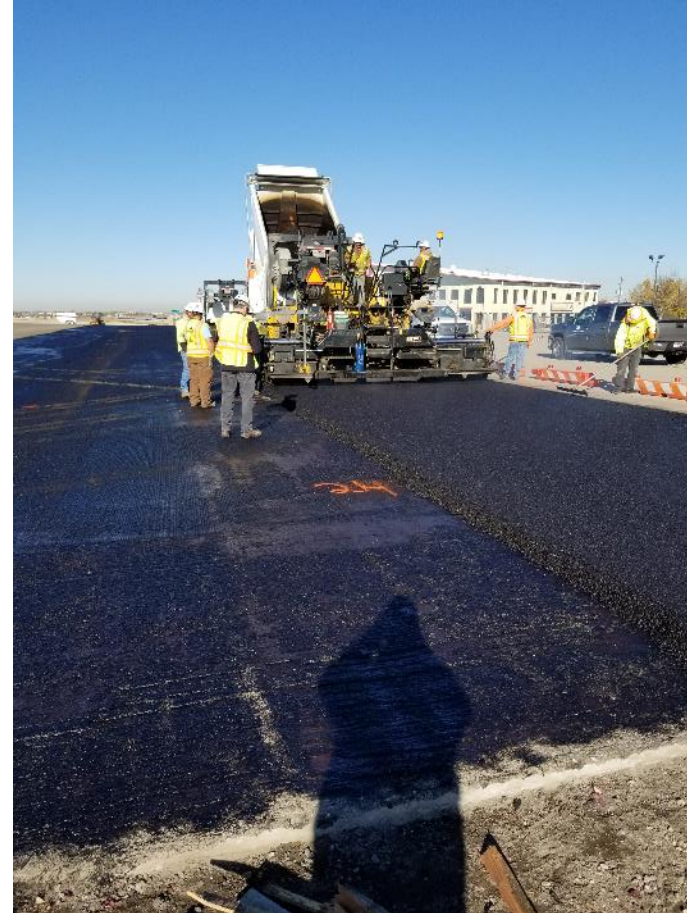
- First snow this season on October 29, 2019
- Airport team was prepared to maintain airfield
- No issues to report





# Airfield Construction Projects

- Rehabilitation of west de-ice apron complete
- Taxiway light replacement complete
- Construction began for Idaho Division of Aeronautics Hangar
- Rehabilitation of FedEx Cargo Ramp
  - Postponed until spring due to weather



# New Contracts and Leases

- American Association of Airport Executives
  - Contract to provide computer based training for tenants and employees



# Boise Airport Idea to be Researched

- National Safe Skies Alliance will invest up to \$200,000 on drone mitigation research
- Boise Airport submitted the problem statement
- Was selected to be funded for further research
- Results could benefit airports across the nation



# Congratulations Director Hupp

- Rebecca Hupp is the new president of the Northwest Chapter of AAAE
- One year term

*“We appreciate your leadership not only in your region but on the national level as well.”*

*- AAAE Team*



# Paradies' Treat Our Troops Program

- Paradies Lagardere has raised over \$100,000 this year to benefit our troops
- The Treat Our Troops program allows passengers to donate items with their purchase
- This is approximately \$40,000 more than this time last year





# United Way Benefit Lunch

- As part of a city-wide fundraising campaign, airport hosted employee lunch benefitting United Way
- Airport raised \$**xxx**
- Airport also donated an airport tour as part of the online auction



**United Way  
of Treasure Valley**

# Passenger Social Comments



**Emily Fassi** @EmilyFassi · 2h

Flying out of @iflyboise is always such a pleasure. I love it so much!!!  
[#boiseairport](#)

  1  1 



**Em Sibley** @Siblinator · 8h

The **Boise Airport** has restored my faith in humanity.

   3 

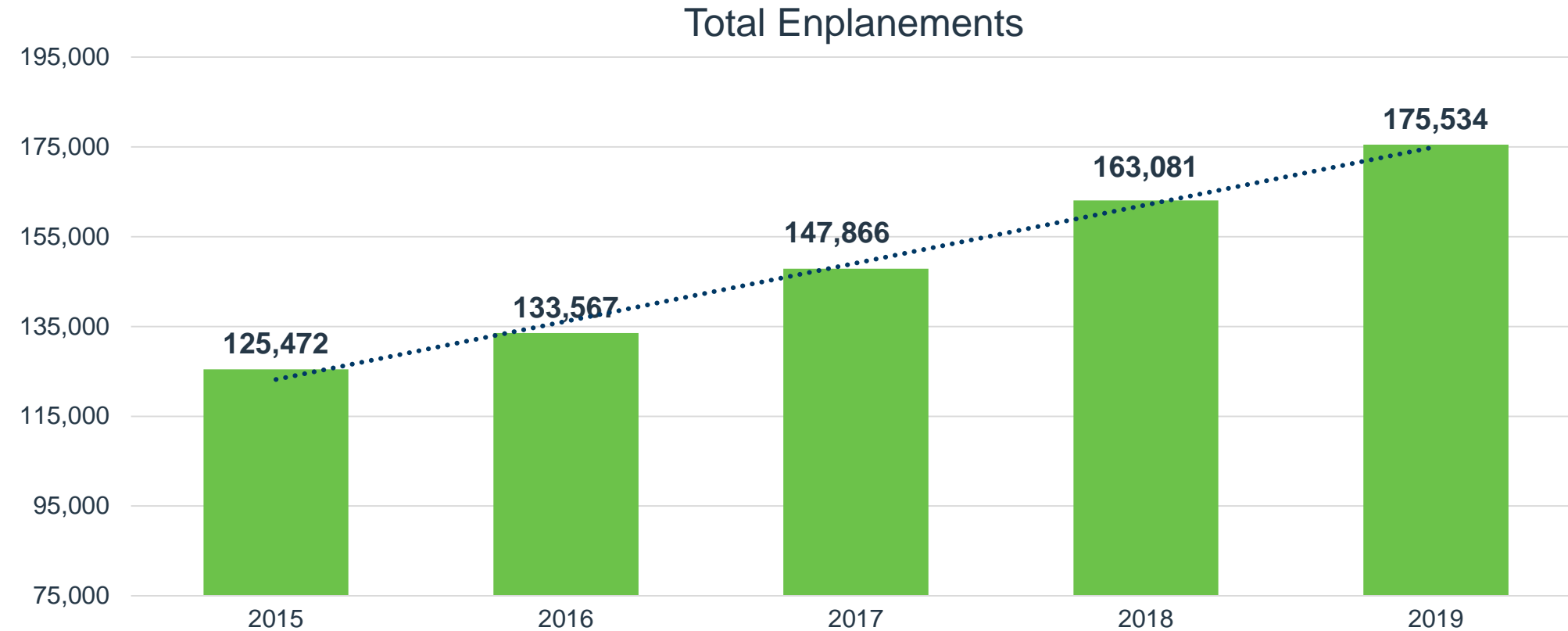
<b>Top 10 Operating Revenue Description</b>	<b>FY 2019</b>	<b>FY 2018</b>	<b>\$ Change</b>	<b>% Change</b>
Parking Lot	\$ 11,942,386	\$ 11,197,766	\$ 744,620	7%
Rental Car Concession	\$ 5,398,826	\$ 5,100,234	\$ 298,592	6%
Industrial Land Rent	\$ 3,675,445	\$ 3,642,534	\$ 32,911	1%
Terminal Rent – Airlines	\$ 3,586,327	\$ 3,539,326	\$ 47,001	1%
Signatory Airline Landing Fees	\$ 3,408,518	\$ 3,174,999	\$ 233,519	7%
Terminal Concession – Food/Beverage	\$ 1,405,407	\$ 1,223,640	\$ 181,767	15%
Terminal Concession – Retail	\$ 1,185,520	\$ 1,094,173	\$ 91,347	8%
Misc. Revenue	\$ 1,069,359	\$ 77,230	\$ 992,129	1285%
Landings/Freight	\$ 633,286	\$ 601,187	\$ 32,099	5%
Terminal Rent – Non Airlines	\$ 611,802	\$ 582,187	\$ 29,615	5%
<b>Total Top 10 Operating Revenue</b>	<b>\$ 32,916,876</b>	<b>\$ 30,233,276</b>	<b>\$ 2,683,600</b>	<b>9%</b>
Other Operating Revenue	\$ 3,372,878	\$ 3,314,420	\$ 58,458	2%
<b>Total Operating Revenue</b>	<b>\$ 36,289,754</b>	<b>\$ 33,547,696</b>	<b>\$ 2,742,058</b>	<b>8%</b>

<b>Top 10 Operating Expenses Description</b>	<b>FY 2019</b>	<b>FY 2018</b>	<b>\$ Change</b>	<b>% Change</b>
Personnel	\$ 7,661,099	\$ 7,282,851	\$ 378,248	5%
Fire Service	\$ 2,799,904	\$ 2,770,971	\$ 28,933	1%
Policing Service	\$ 2,729,342	\$ 2,576,214	\$ 153,128	6%
Indirect Cost Reimbursement	\$ 1,406,078	\$ 1,452,847	\$ (46,769)	-3%
Parking Management	\$ 1,344,682	\$ 1,273,355	\$ 71,327	6%
R/M – Structural/Electrical/Plumbing	\$ 837,080	\$ 813,788	\$ 23,292	3%
Power	\$ 836,273	\$ 830,740	\$ 5,533	1%
R/M – Fleet Management	\$ 440,979	\$ 409,114	\$ 31,865	8%
Chemicals	\$ 413,939	\$ 511,502	\$ (97,563)	-19%
Credit Card Fees	\$ 332,138	\$ 301,678	\$ 30,460	10%
<b>Total Top 10 Operating Expenses</b>	\$ 18,801,512	\$ 8,223,060	\$ 578,452	3%
Other Operating Expense	\$ 4,340,346	\$ 5,635,106	\$ (1,294,760)	-23%
<b>Total Operating Expense</b>	\$ 23,141,858	\$ 23,858,166	\$ (716,308)	-3%



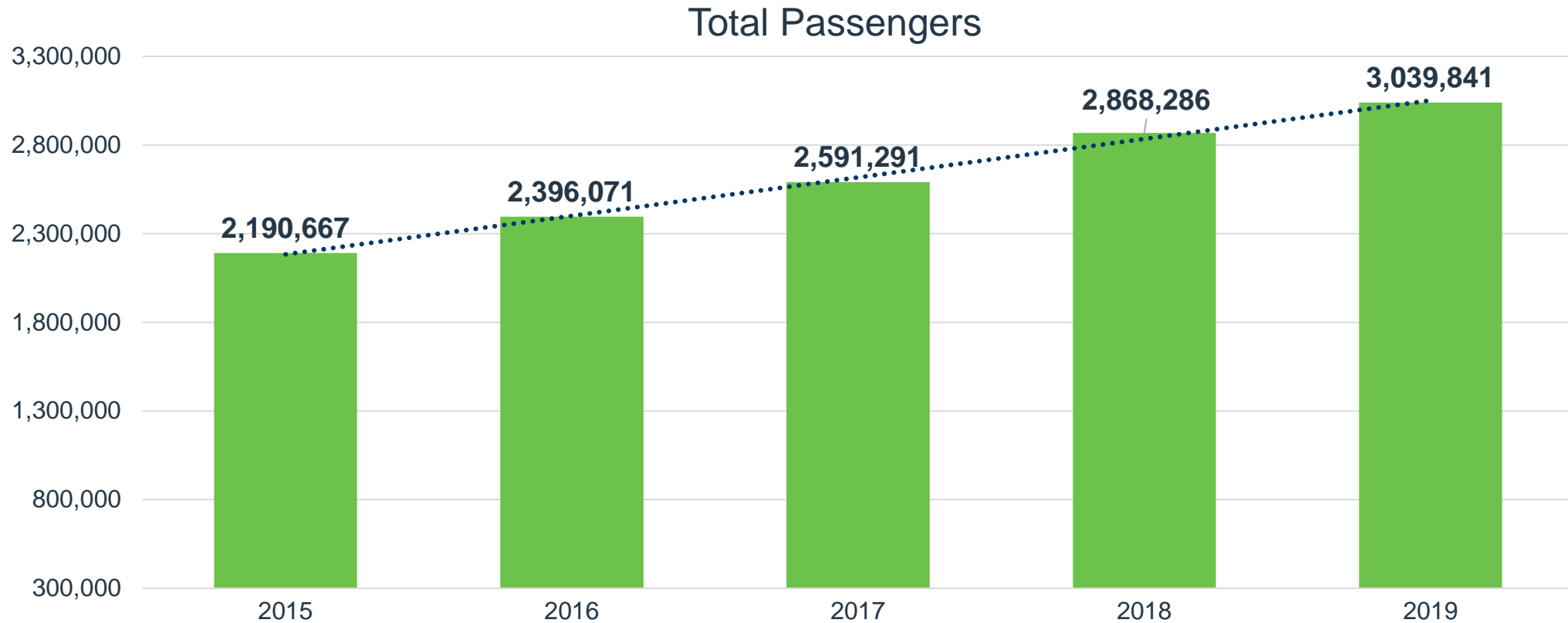
# September Enplanements

*Up 8% September 2019 over September 2018*



# 2019 Total Passengers

*Up 6% over 2018*



# Upcoming Events

Date	Event
December 5, 2019	Next Commission Meeting
January 1, 2020	New Parking Rates Begin