

The Boise Airport's May Commission Meeting was cancelled due to the COVID-19 outbreak. The following report was emailed to all Boise Airport Commissioners.



# May Commission Presentation

## *Director's Report*

Rebecca Hupp A.A.E.  
Boise Airport Director

MAY 2020

# April Runway Closures

- **April 8: 10R/28L 8:00am – 8:30am**  
Emergency lighting maintenance
- **April 20: 10L/28R 9:30am – 10:00am**  
Emergency lighting maintenance
- **April 20: 10R/28L 10:00am – 10:30am**  
Emergency lighting maintenance

## Upcoming Scheduled Closures:

- **May 4: 10L/28R 7:00am – 3:30pm**  
Variety of maintenance work
- **May 5: 10R/28L 7:00am – 3:30pm**  
Variety of maintenance work



# Idaho Legislature Update

- Regulating transportation network companies
  - Passed the Senate but was not considered in the House
- Attracting intra-state air service
  - Passed
- Taxing municipal property that is leased to private companies
  - Failed





# COVID-19 Airport Update

# Airport Cleaning

- In early February airport increased the frequency of cleaning high-touch areas
  - Restrooms, seating, handrails, elevators, etc.
- Using CDC recommended cleaning products
- Employees have proper PPE



# Passenger Communication


- Social Distancing
  - Airport installed signage, created PA announcement, social posts
- Hand Washing
  - CDC recommended signage placed on our digital network
- Face Coverings Recommended
  - Airport installed signage, created PA announcement, social posts



# Passenger Communication

- City and State policies have been posted to keep passengers informed
- City of Boise Public Health Emergency Order
  - Airport installed signage reminding terminal access is limited to essential business
- State of Idaho Order
  - Airport installed signage with overview of order, including 14-day quarantine for out-of-state visitors

**Idaho COVID-19** coronavirus.idaho.gov  
Rebound to Recovery

 **GUIDANCE FOR GOVERNOR BRAD LITTLE'S AMENDED STATEWIDE STAY-HOME ORDER**  
Order Updated on April 15, 2020 | Effective through April 30, 2020

**Facilities & services can open for curbside & delivery**  
Any facility or service (including formerly "non-essential" businesses) can begin to operate via curbside services, drive-in, drive-through pickup, mailed services or delivery services.

Must remain closed: indoor gyms, recreational facilities, nightclubs, bars, entertainment venues, convention centers, hair and nail salons, public events and gatherings, dine-in restaurants (drive-thru, carry-out, delivery to continue), and other facilities and services not included in "essential" businesses as defined in order.

**Out-of-state travelers limited**  
Non-residents must self-quarantine in Idaho for 14 days after coming into the state.

Does not apply to those performing essential services or those who live in one state and work or gain essential services in another state.

**Continue to self-isolate**  
ALL residents of Idaho must self-isolate and stay and work from home as much as possible, unless you work in healthcare, public safety or an identified "essential business" as defined in order.

Residents can leave homes to obtain or provide essential services. People at higher risk (over 65 and/or health-compromised) should avoid leaving their homes.

Employers that do not provide essential services as defined in order must take all steps necessary for employees to work remotely from home.

**Ramp up personal hygiene**  
Practices social distancing, wash hands, don't touch your face, clean high touch surfaces, cover coughs and sneezes, and do not shake hands. Wear protective face coverings in public places and gloves as necessary.

**"Essential" facilities & services still open**  
Grocery stores, healthcare facilities, gas stations, pharmacies, essential state and local government functions, laundromats/laundry services, financial institutions, residential and home-based care, veterinary services, hardware stores, limited child care for essential workers, infrastructure, and other businesses essential to the safety and well-being of the residents as defined in the order remain open. Restaurants open only for drive-thru, carry-out, or delivery.

**Limit public transit & travel**  
Only to provide or obtain essential services. Idaho residents continue to cease all non-essential travel.

**No gatherings**  
Limit all non-essential gatherings of any number of individuals outside the household.

**Outdoor activity OK**  
Outdoor activity is not prohibited but residents should keep distance of 6-feet from others not in their household.

Amended Order in effect through April 30, 2020.  
Governor Little and public health officials will reassess before April 30, 2020.  
Final Amended Statewide Stay-Home Order available at coronavirus.idaho.gov



# Airport Employees

- No City of Boise airport employees have been furloughed or let go due to COVID-19
- Many employees are working remotely
- Small crew onsite to staff Operations, Custodial and Airport Maintenance



# Airport & Tenant Relief Update

# CARES Act Funds

- Boise Airport has been allocated nearly \$19 million from the CARES Act
- Provides 8 months of funding applied to operating and maintenance expenses based upon forecasted expenses



# Airlines

- The Boise Airport has deferred airline rent, fees, and charges for the months of April – June
- All deferred charges must be paid in FY 2020





# Rental Car Companies and Certain Terminal Tenants

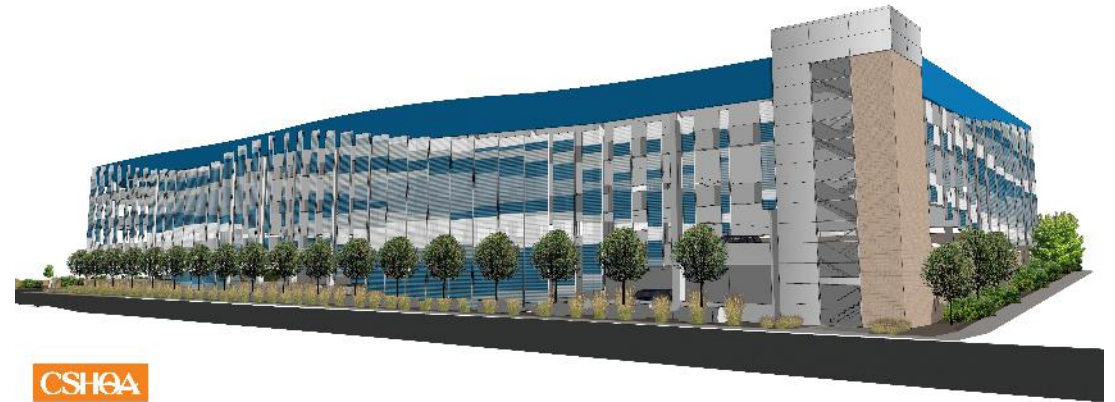
- The Boise Airport has deferred all rent, fees, and charges for the months of April – June
- Minimum Annual Guarantee reduced as outlined in contracts
- Minimum Monthly Guarantee waived in April and May, airport to charge a percentage of revenue
- All deferred charges must be paid in FY 2020



# Construction Update

# New Construction Halted

- Boise Airport is halting all new construction, including cancelling the employee garage project at this time
- The airport will re-evaluate these projects as passenger traffic and the economy improves



# Construction Projects Moving Forward

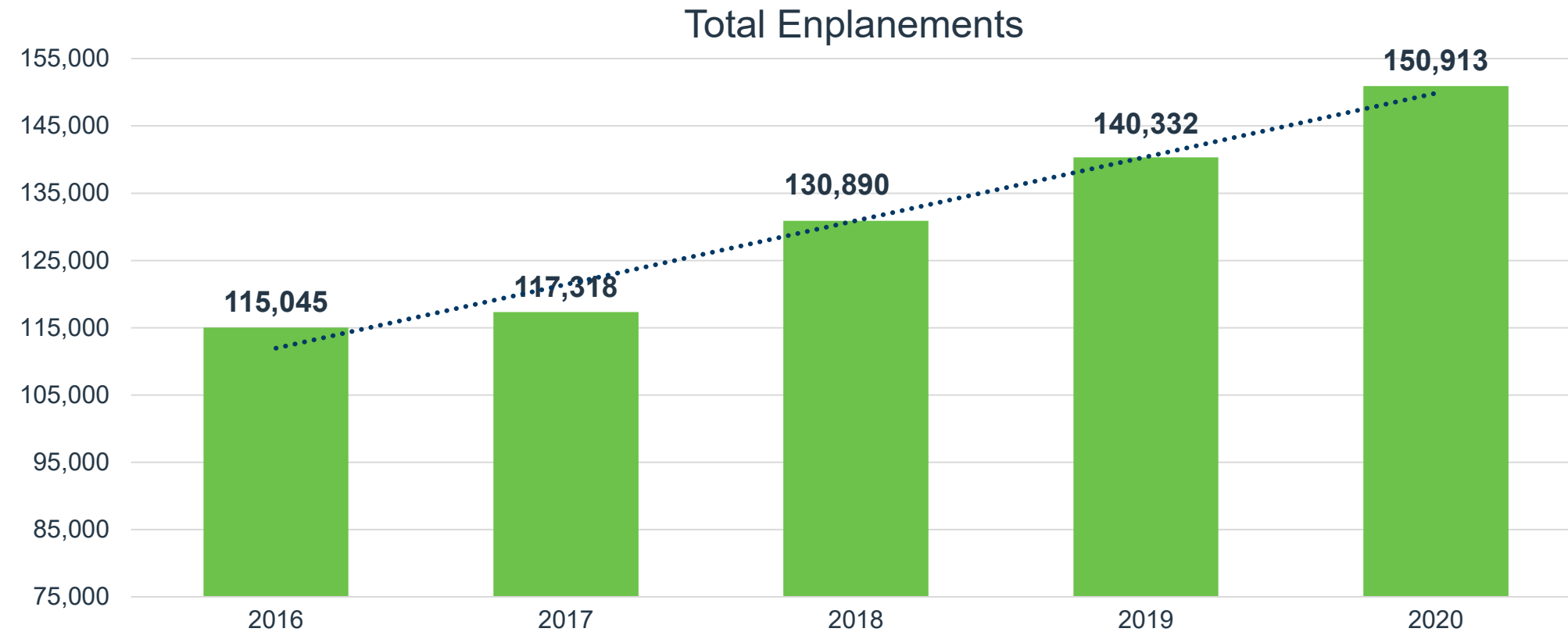
- ITD Division of Aeronautics hangar
- Concourse B apron reconstruction project
- Economy Lot improvements
- BOI office expansion to make room for new employees
- Replacement of drive gates
- Relocation of Taxiway H
- Rehabilitation of Taxiways B & J, and remote de-ice aprons
- Taxilane S extension
- Utility relocation
- Design of public garage, rental car garage, and exit plaza



# Airport Statistics

# February Enplanements

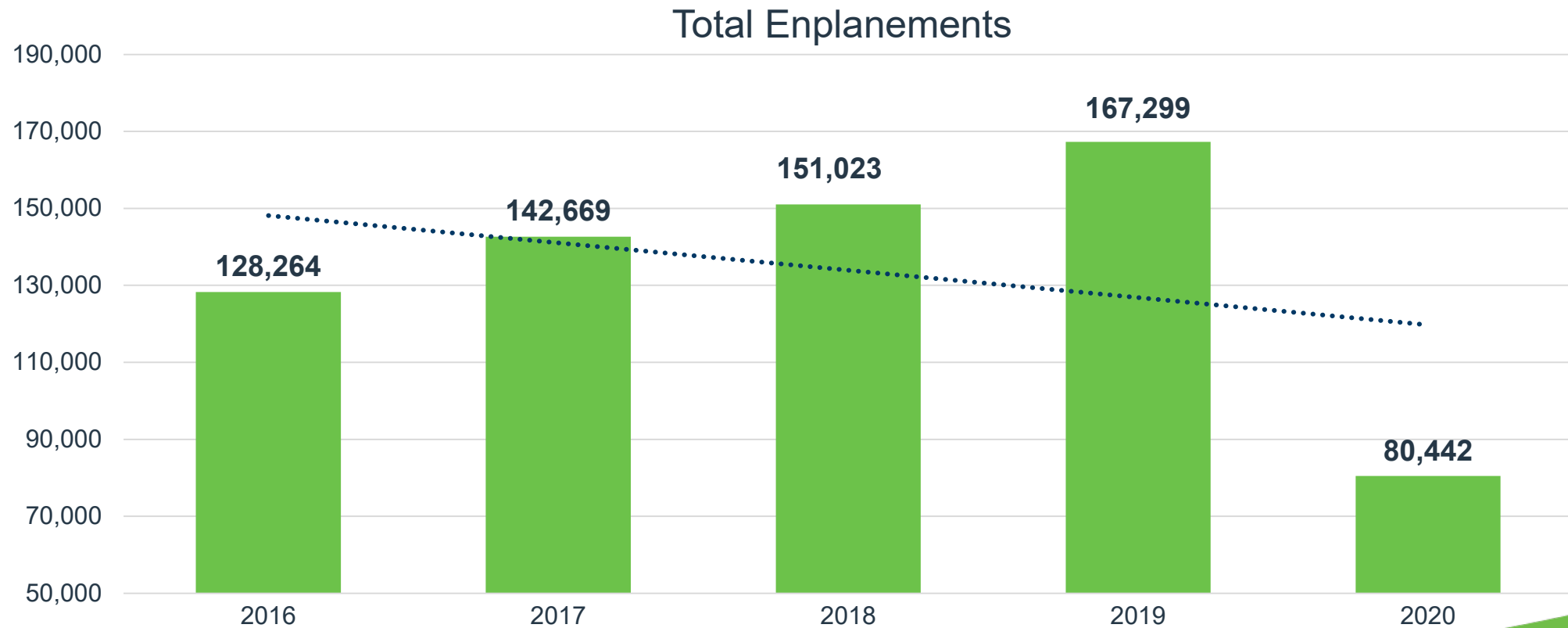
*Up 8% February 2020 over February 2019*



# March Enplanements

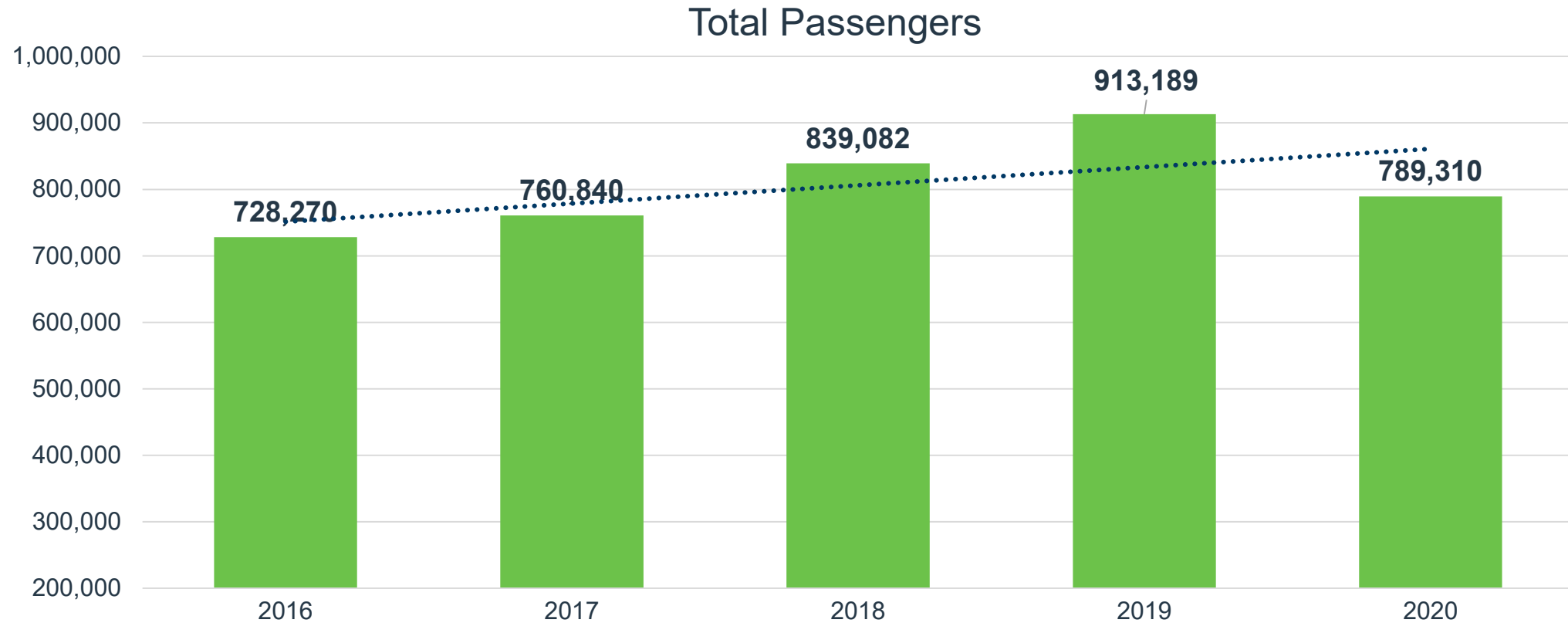
*Down 52% March 2020 over March 2019*

*First month without YOY growth since March 2014*



# 2020 Total Passengers

*Down 14% over 2019 (through March)*



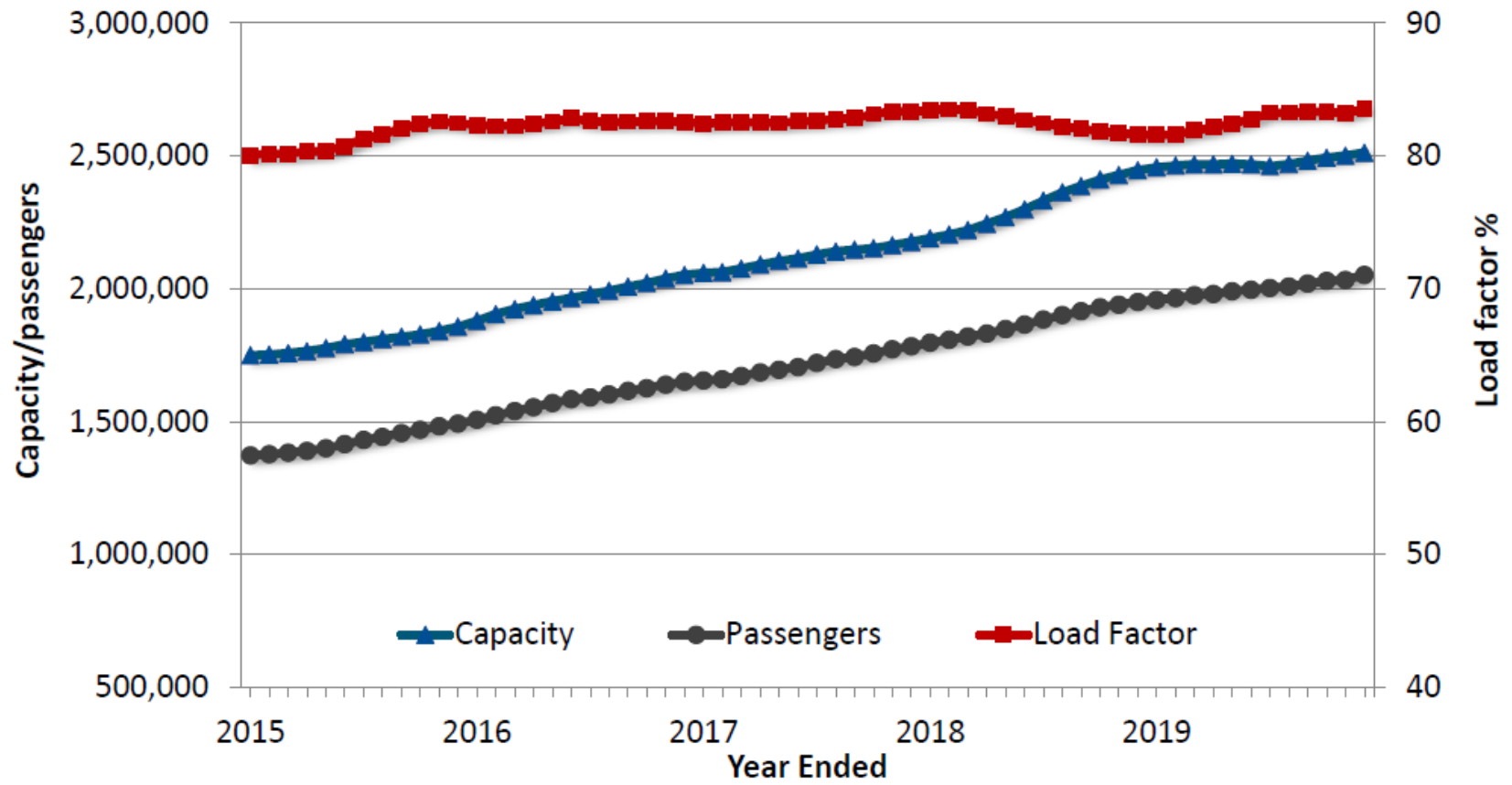


<b>Top 10 Operating Revenue Description</b>	<b>FY 2020</b>	<b>FY 2019</b>	<b>\$ Change</b>	<b>% Change</b>
Parking Lot	\$ 6,006,434	\$ 5,814,649	\$ 191,785	3%
Rental Car Concession	\$ 2,844,853	\$ 2,346,889	\$ 497,964	21%
Industrial Land Rent	\$ 1,890,207	\$ 1,826,869	\$ 63,338	3%
Terminal Rent – Airlines	\$ 1,811,360	\$ 1,792,094	\$ 19,266	1%
Signatory Airline Landing Fees	\$ 1,717,718	\$ 1,613,236	\$ 104,482	6%
Terminal Concession – Food/Beverage	\$ 652,482	\$ 639,829	\$ 12,653	2%
Terminal Concession – Retail	\$ 531,754	\$ 534,244	\$ (2,490)	0%
Landings/Freight	\$ 374,620	\$ 311,813	\$ 62,807	20%
Terminal Rent – Non Airlines	\$ 306,539	\$ 296,641	\$ 9,898	3%
Advertising	\$ 228,820	\$ 196,009	\$ 32,811	17%
<b>Total Top 10 Operating Revenue</b>	<b>\$ 16,364,787</b>	<b>\$ 15,372,271</b>	<b>\$ 992,516</b>	
Other Operating Revenue	\$ 1,370,790	\$ 1,544,036	\$ (173,246)	-11%
<b>Total Operating Revenue</b>	<b>\$ 17,735,577</b>	<b>\$ 16,916,307</b>	<b>\$ 819,270</b>	<b>5%</b>

<b>Top 10 Operating Expenses Description</b>	<b>FY 2020</b>	<b>FY 2019</b>	<b>\$ Change</b>	<b>% Change</b>
Personnel	\$ 4,230,572	\$ 3,812,663	\$ 417,909	11%
Fire Service	\$ 1,472,195	\$ 1,385,486	\$ 86,710	6%
Policing Service	\$ 1,465,586	\$ 1,316,450	\$ 149,136	11%
Parking Management	\$ 1,022,056	\$ 787,616	\$ 234,440	30%
Indirect Cost Reimbursement	\$ 913,221	\$ 663,555	\$ 249,666	38%
R/M – Structural/Electrical/Plumbing	\$ 561,459	\$ 312,551	\$ 248,908	80%
Power	\$ 378,828	\$ 391,043	\$ (12,215)	-3%
Chemicals	\$ 365,247	\$ 210,021	\$ 155,226	74%
R/M – Fleet Management	\$ 316,786	\$ 206,301	\$ 110,485	54%
Credit Card Fees	\$ 168,641	\$ 159,921	\$ 8,720	5%
<b>Total Top 10 Operating Expenses</b>	<b>\$ 10,894,591</b>	<b>\$ 9,245,605</b>		
Other Operating Expense	\$ 1,866,395	\$ 1,789,236	\$ 77,159	4%
<b>Total Operating Expense</b>	<b>\$ 12,760,986</b>	<b>\$ 11,034,841</b>	<b>\$ 1,726,145</b>	<b>16%</b>

# Quarterly Report Q4 2019

# Boise Traffic/Capacity Trends



Year end December 2019 capacity was up 3% while passenger traffic was up 5%, leading to 2% increase in the average load factor (84%)

# Top Origination/Destination Markets

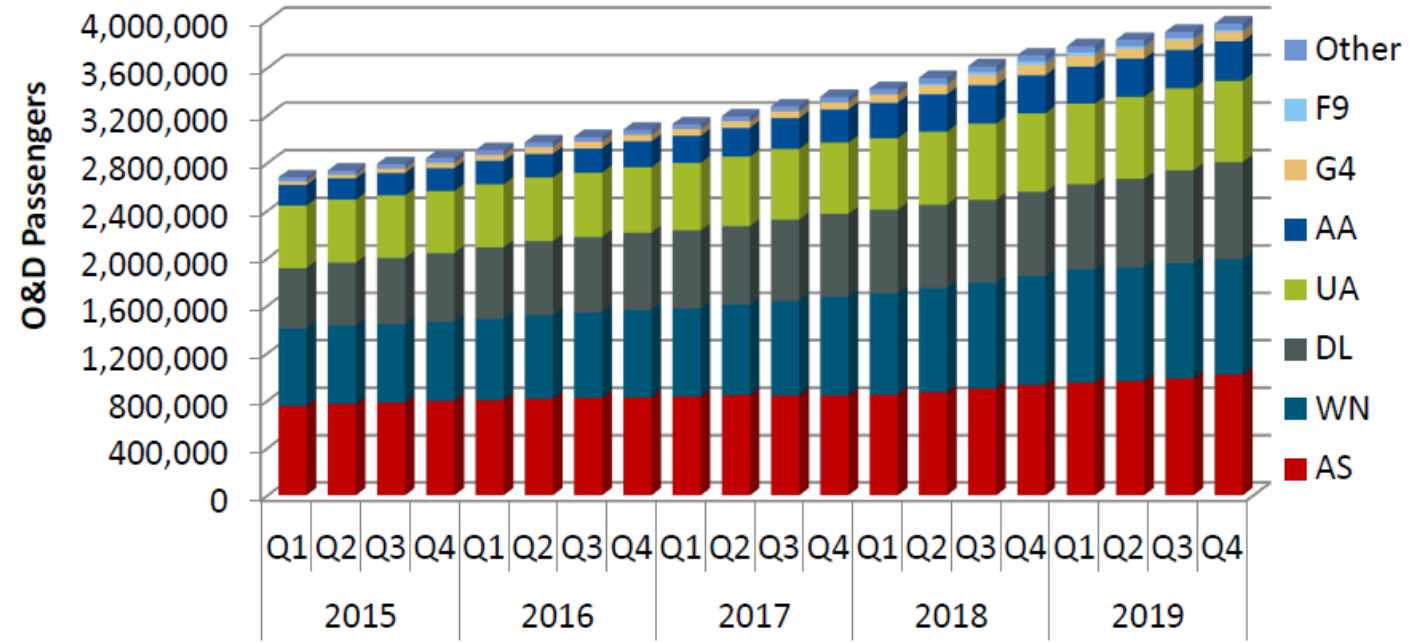
Rank	Destination	O&D Pax	O&D Revenue	Average Fare (\$)	Yield (¢)	% Change Since Q4 2018			
						Pax	Rev	Fare	Yield
1	Seattle, WA	114,875	9,588,164	83	21	21	1	(17)	(17)
2	Portland, OR	61,695	7,500,064	122	35	4	7	3	3
3	Los Angeles, CA	52,537	6,927,589	132	20	16	17	1	1
4	Phoenix, AZ (PHX)	45,867	6,567,897	143	19	13	23	9	9
5	Spokane, WA	42,406	3,701,702	87	30	(4)	3	8	8
6	Denver, CO	41,814	5,918,333	142	22	1	5	4	4
7	Las Vegas, NV	40,522	4,971,140	123	24	3	15	11	11
8	San Diego, CA	39,819	4,661,554	117	16	3	3	(0)	(0)
9	Sacramento, CA	37,117	3,933,592	106	24	5	16	11	11
10	San Jose, CA	27,975	3,351,012	120	23	27	21	(5)	(5)
11	San Francisco, CA	22,207	3,820,800	172	33	2	5	3	3
12	Salt Lake City, UT	21,651	3,941,588	182	63	(15)	10	30	30
13	Oakland, CA	18,247	2,530,853	139	27	(11)	(2)	10	10
14	Chicago, IL (ORD)	16,960	4,289,592	253	18	14	10	(4)	(4)
15	Orange County, CA	16,175	2,617,990	162	24	8	11	3	3
16	Dallas, TX (DFW)	15,747	4,050,540	257	20	5	19	14	14
17	Minneapolis, MN	12,980	2,920,606	225	20	(6)	(3)	4	4
18	Ontario, CA	11,396	1,643,864	144	22	9	12	3	3
19	Orlando, FL (MCO)	10,818	2,684,152	248	11	2	12	10	10
20	Burbank, CA	9,847	1,287,692	131	20	9	8	(0)	(0)
<b>Total/Average</b>		<b>1,040,700</b>	<b>191,232,092</b>	<b>184</b>	<b>17</b>	<b>7</b>	<b>8</b>	<b>1</b>	<b>2</b>

San Jose replaced Salt Lake City in the top 10 markets compared to Q4 2018

The other markets remained the same, with some shifting among rankings

# Boise Airline Market Share

Alaska and Delta gained 1% of share each against United and Frontier losing 1% of share each



Year	Quarter	Airline Market Share							
		AS	WN	DL	UA	AA	G4	F9	Other
2018	Q1	25%	25%	20%	18%	9%	2%	0%	1%
	Q2	25%	25%	20%	18%	9%	2%	0%	1%
	Q3	25%	25%	19%	18%	9%	2%	1%	1%
	Q4	25%	25%	19%	18%	9%	2%	1%	1%
2019	Q1	25%	25%	19%	18%	9%	2%	1%	1%
	Q2	25%	25%	20%	18%	8%	2%	1%	1%
	Q3	25%	25%	20%	18%	8%	2%	1%	1%
	Q4	<b>26%</b>	<b>25%</b>	<b>21%</b>	<b>17%</b>	<b>8%</b>	<b>2%</b>	<b>0%</b>	<b>1%</b>



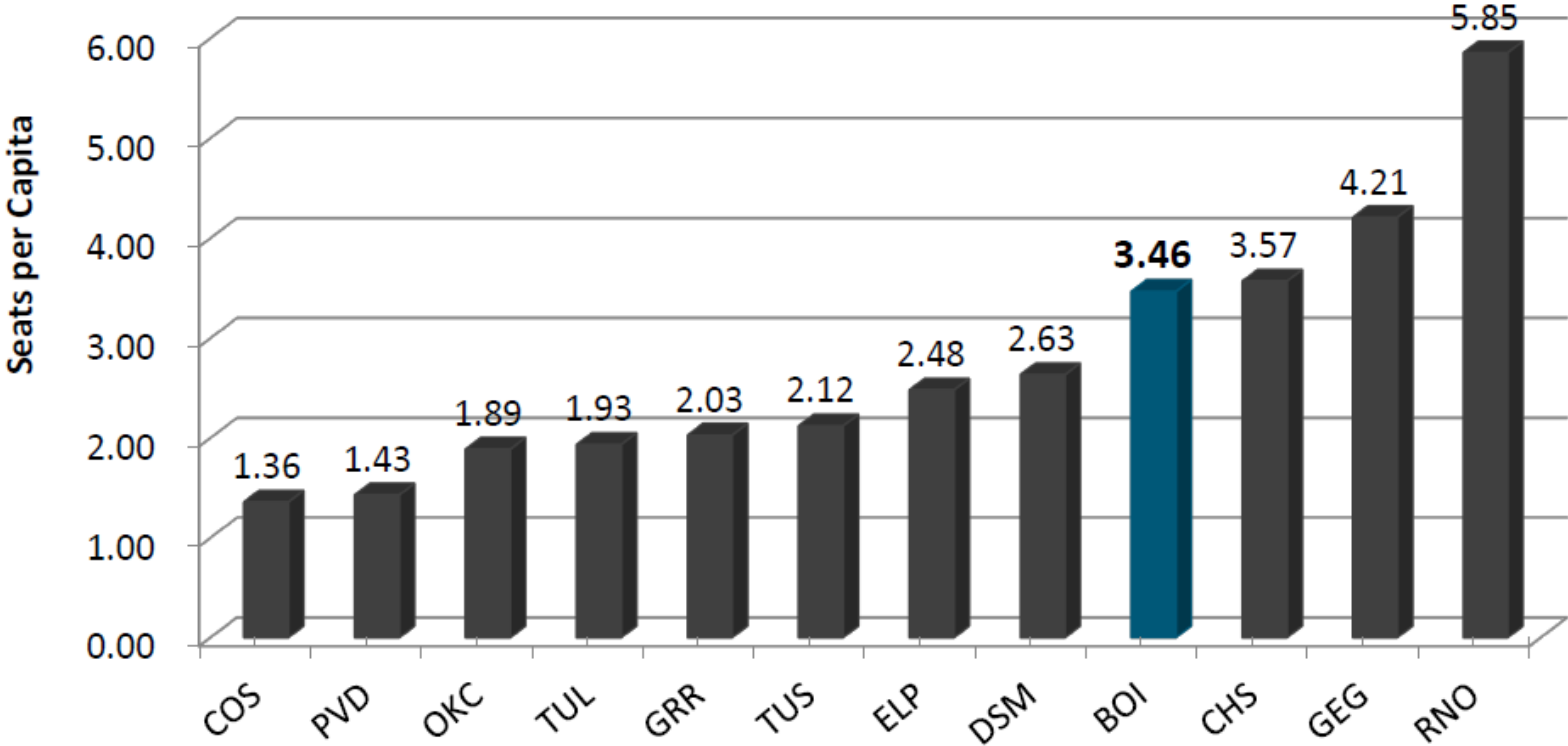
# Boise Forward Looking Schedule



Destination	Airline	Year over Year Change %											
		May 2020		Jun 2020		Jul 2020		Aug 2020		Sep 2020		Oct 2020	
		Flts	Seats	Flts	Seats	Flts	Seats	Flts	Seats	Flts	Seats	Flts	Seats
Total		(42%)	(49%)	10%	4%	18%	17%	16%	15%	15%	15%	14%	18%

Over the next 6 months, BOI’s flights are scheduled to increase by 6% and seats by 4% in total despite the impact of COVID-19 in May

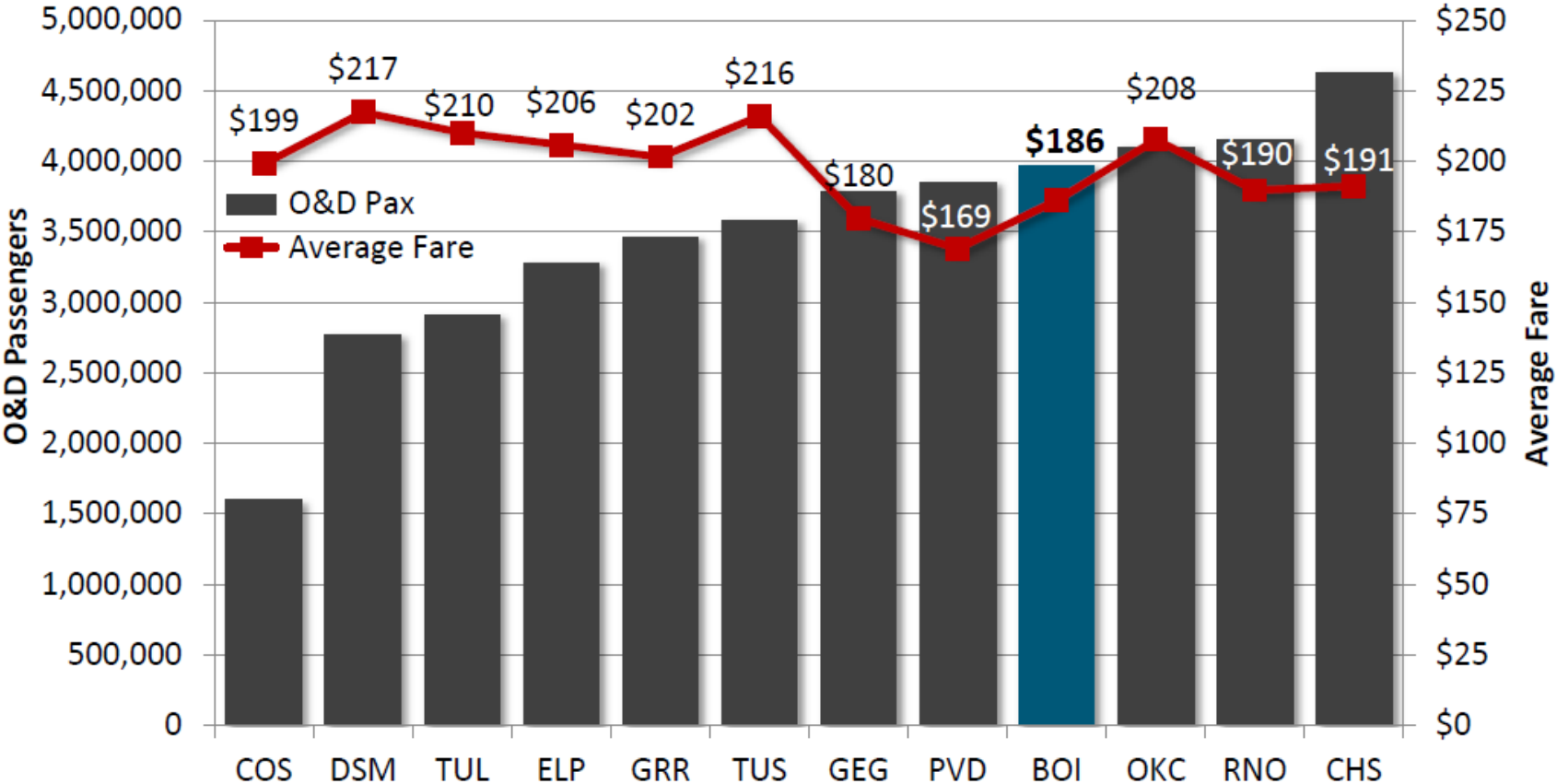
# Seats Per Capita Comparison



BOI increased slightly from 3.42 to 3.46 seats per capita from YE Q3 2019 to YE Q4 2019.

Average: 2.43

# Origination/Destination Passenger and Airfare Comparison



BOI had the 4<sup>th</sup> highest O&D passengers and had the lowest fare among compare markets with the exception of Spokane and Providence

# Year-Over-Year Comparisons

Airport	2019 MSA Population	YE Q4 2019			YOY Change		
		# of Nonstop Destinations	O&D Pax	Seats	# of Nonstop Destinations	O&D Pax	Seats
Reno, NV	475,990	23	4,157,209	2,785,622	(1)	5.7%	8.3%
Spokane, WA	569,690	17	3,785,606	2,396,409	0	4.0%	0.6%
Des Moines, IA	653,824	22	2,771,525	1,720,624	(1)	6.1%	6.4%
<b>Boise, ID</b>	<b>725,234</b>	<b>19</b>	<b>3,971,161</b>	<b>2,512,879</b>	<b>(2)</b>	<b>7.2%</b>	<b>2.7%</b>
Colorado Springs, CO	735,207	13	1,599,981	996,882	(4)	(2.5%)	(1.9%)
Charleston, SC	802,945	32	4,629,773	2,864,800	2	8.0%	7.5%
El Paso, TX	876,620	17	3,280,609	2,173,076	2	7.2%	5.0%
Tulsa, OK	1,008,780	19	2,913,183	1,948,451	(6)	1.4%	0.7%
Tucson, AZ	1,050,054	21	3,579,102	2,224,553	0	5.9%	5.7%
Grand Rapids, MI	1,072,862	31	3,463,957	2,173,665	5	9.9%	10.7%
Oklahoma City, OK	1,415,614	28	4,102,570	2,669,462	(2)	2.7%	2.1%
Providence, RI	1,638,093	28	3,852,854	2,338,353	(5)	(4.0%)	(9.6%)

Boise had one of the highest percentage increases in passengers but a modest increase in seats among compare markets





# Boise Airport

[www.iflyboise.com](http://www.iflyboise.com)