

The Boise Airport's November Commission Meeting was cancelled. The following report was emailed to all Boise Airport Commissioners.



November Commission Presentation

Director's Report

Rebecca Hupp A.A.E.
Boise Airport Director

NOVEMBER 4, 2020

October Runway Closures

- **October 12: 10R/28L, 8am – 5pm**
Routine maintenance
- **October 16: 10L/28R, 8am – 5pm**
Routine maintenance

Upcoming Scheduled Closures:

- **November 5: 10R/28L, 10am – 2pm**
Routine maintenance



Construction Update

- **Four new airfield drive gates have been installed**
- **Employee Office Space**
 - Completed, added 7 admin office spaces
- **Credentialing Office**
 - Currently under construction



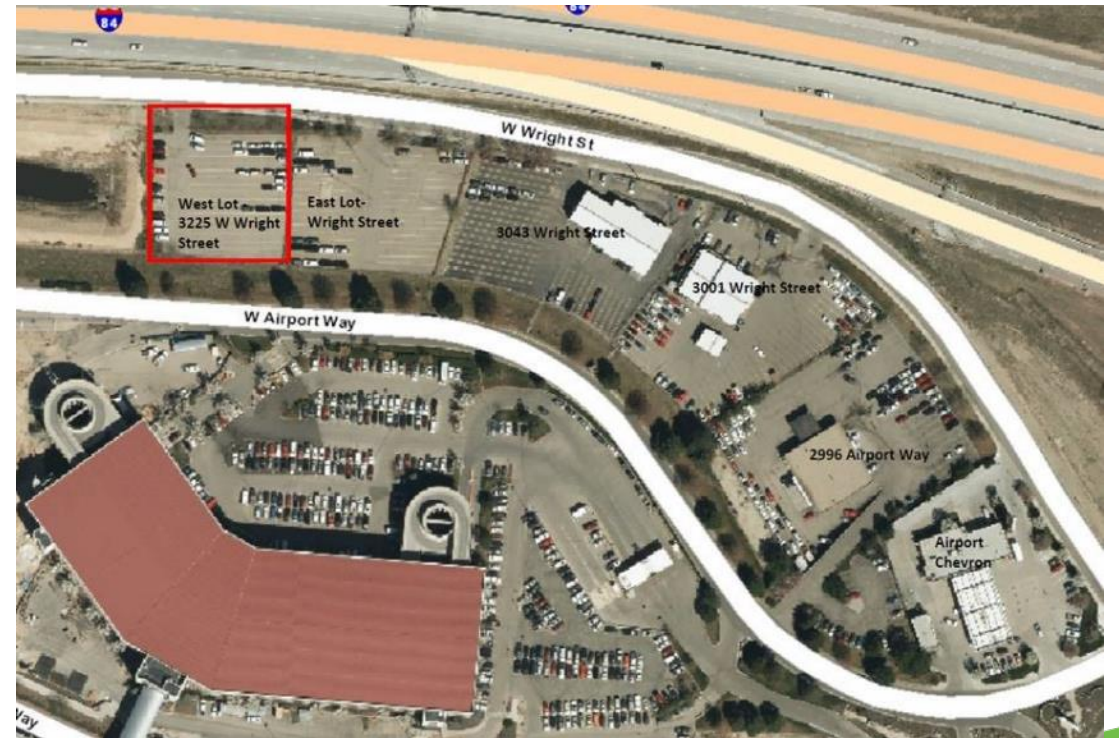
New Contracts and Leases

- Western Aircraft
 - To account for new development, the Boise Airport agreed to a new lease which supersedes their current lease
 - This new lease has an initial term through December 31, 2029 with a twenty-year renewal term
 - The Western Aircraft FBO complex includes an FBO terminal, fuel farm, six current hangars, an upcoming new hangar, infill building and a parts building



New Contracts and Leases

- Budget Rent-A-Car
 - Dollar/Thrifty rejected their overflow lot lease on Wright Street as part of their bankruptcy
 - The .7 acre paved, and fenced lot has been leased to Budget
 - The lease runs concurrently with their concession and lease agreement, through 9/30/2021



New Contracts and Leases

- AAAE Clearinghouse
 - AAAE's TNC tracking software will be used as a third-party verification regarding total TNC trips.
 - The application will also invoice Uber and Lyft, and remit the payment to the airport
 - Cost is 5% of revenue

The agreement is pending City Council approval



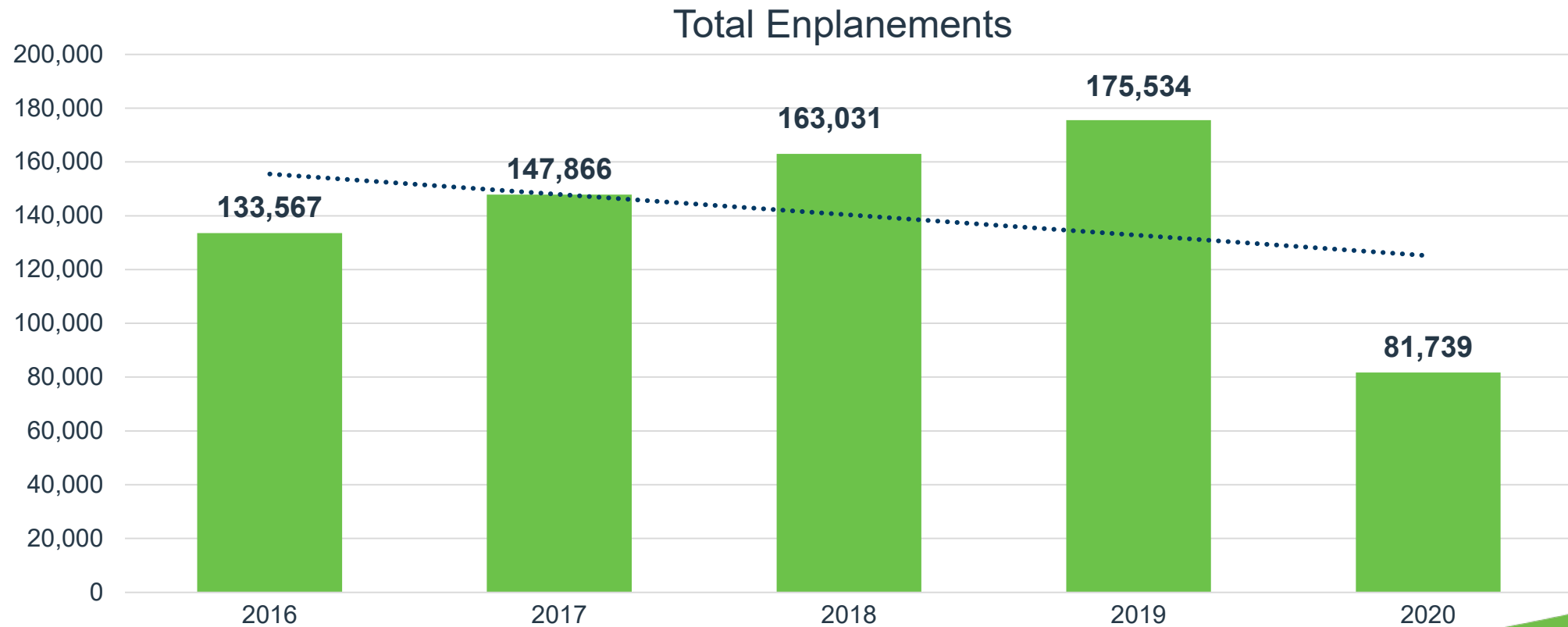
Public Parking Garage Design

- The Boise Airport submitted the East Public Parking Garage plans to the city for design review
- Design includes: 5 story structure, 1150 spaces, 7 lane toll plaza, office space for parking management
- Design review typically takes six months



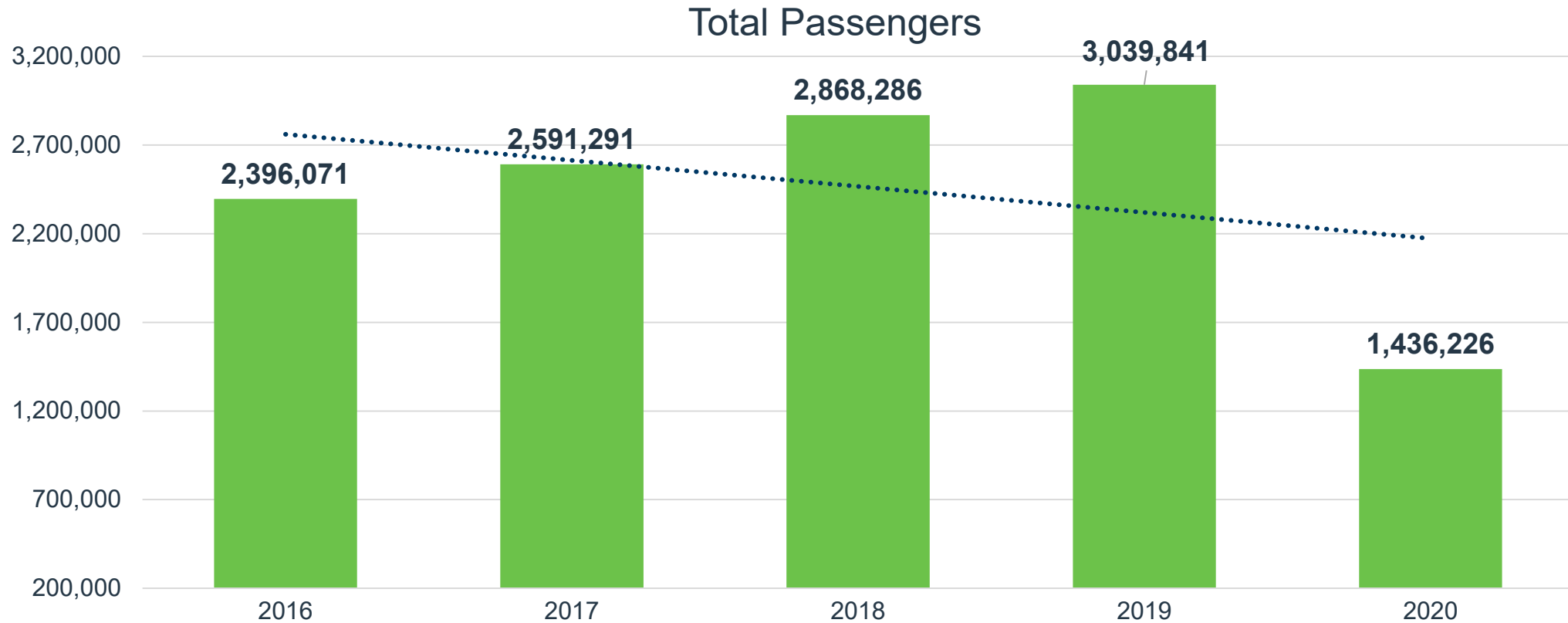
September Enplanements

Down 53% September 2020 over September 2019

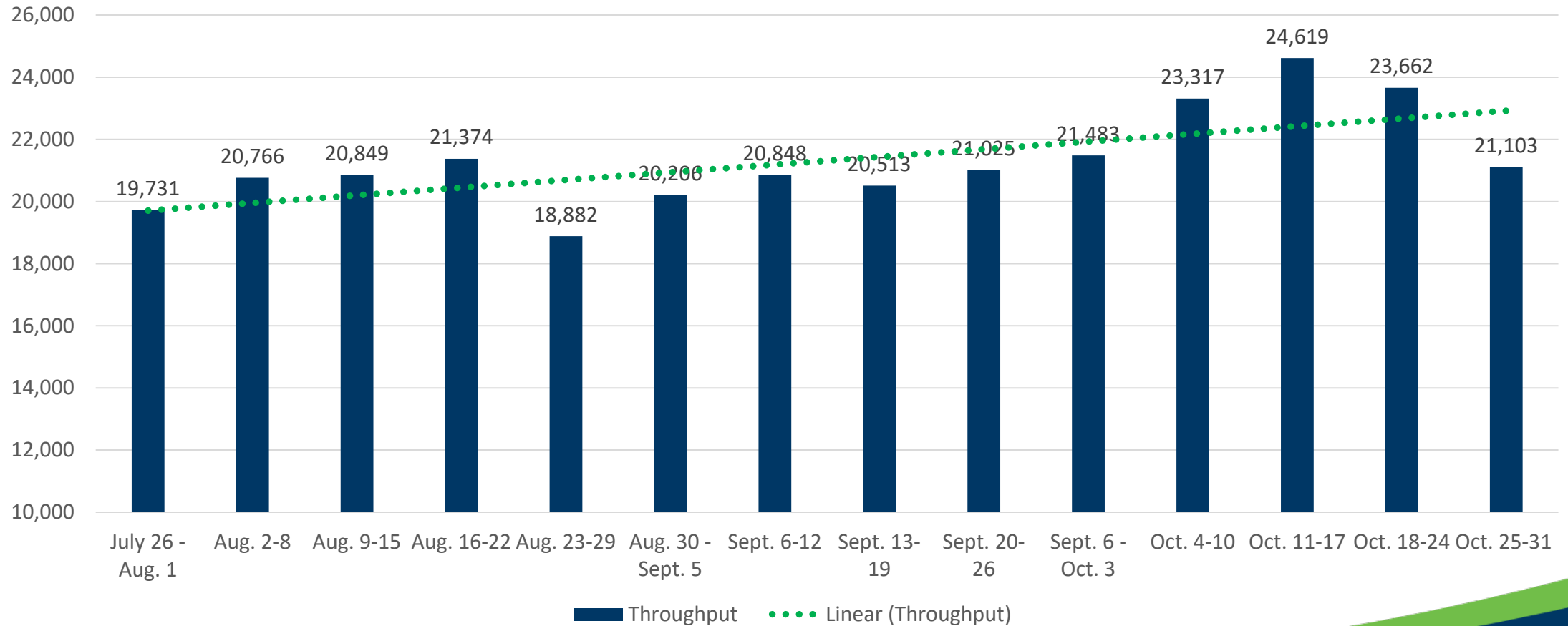


2020 Total Passengers

Down 53% over 2019 (through September)



Weekly TSA Throughput at BOI



Top 10 Operating Revenue Description	FY 2020	FY 2019	\$ Change	% Change
Parking Lot	\$ 7,606,448	\$ 11,942,386	\$ (4,335,938)	-36%
Rental Car Concession	\$ 3,486,606	\$ 5,398,826	\$ (1,912,220)	-35%
Industrial Land Rent	\$ 3,585,604	\$ 3,675,445	\$ (89,841)	-2%
Terminal Rent – Airlines	\$ 3,005,671	\$ 3,586,327	\$ (580,656)	-16%
Signatory Airline Landing Fees	\$ 2,482,983	\$ 3,408,518	\$ (925,535)	-27%
Terminal Concession – Food/Beverage	\$ 769,105	\$ 1,405,407	\$ (636,302)	-45%
Terminal Concession – Retail	\$ 671,521	\$ 1,185,520	\$ (514,000)	-43%
Terminal Rent – Non-Airlines	\$ 606,419	\$ 611,802	\$ (5,383)	-1%
Landings/Freight	\$ 602,386	\$ 633,286	\$ (30,900)	-5%
Employee Parking Permits	\$ 504,788	\$ 543,787	\$ (38,999)	-7%
Total Top 10 Operating Revenue	\$ 23,321,531	\$ 32,391,305	\$ (9,069,774)	-28%
Other Operating Revenue	\$ 4,459,078	\$ 3,898,459	\$ 560,619	14%
Total Operating Revenue	\$ 27,780,609	\$ 36,289,764	\$ (8,509,155)	-23%

Top 10 Operating Expenses Description	FY 2020	FY 2019	\$ Change	% Change
Personnel	\$ 8,941,224.82	\$ 7,661,099	\$ 1,280,126	17%
Fire Service	\$ 2,944,390	\$ 2,799,904	\$ 144,486	5%
Policing Service	\$ 2,931,172	\$ 2,729,342	\$ 201,830	7%
Indirect Cost Reimbursement	\$ 1,842,475	\$ 1,406,078	\$ 436,398	31%
Parking Management	\$ 1,444,186	\$ 1,344,682	\$ 99,504	7%
R/M – Structural/Electrical/Plumbing	\$ 1,243,366	\$ 837,080	\$ 406,286	49%
Power	\$ 780,466	\$ 836,273	\$ (55,807)	-7%
R/M – Fleet Management	\$ 510,585	\$ 440,979	\$ 69,606	16%
Chemicals	\$ 350,676	\$ 413,939	\$ (63,263)	-15%
Professional Services	\$ 335,646	\$ 173,387	\$ 162,259	94%
Total Top 10 Operating Expenses	\$ 21,324,186	\$ 18,642,761	\$ 2,681,426	14%
Other Operating Expense	\$ 3,336,447	\$ 4,499,097	\$ (1,162,651)	-26%
Total Operating Expense	\$ 24,660,633	\$ 23,141,858	\$1,518,775	7%



Boise Airport

www.iflyboise.com