

The Boise Airport's January Commission Meeting was cancelled due to COVID-19 guidance. The following report was emailed to all Boise Airport Commissioners.



January Commission Report

Virtual Update

Rebecca Hupp A.A.E.
Boise Airport Director

JANUARY 2021

December Runway Closures

- **December 13: 10R/28L 3:25pm – 4:00pm, 8:40pm – 9:25pm**
Snow removal, treatment
- **December 13: 10L/28R 4:35pm – 5:35pm, 7:40pm – 8:40pm**
Snow removal, treatment
- **December 15: 10L/28R 8:00am – 11:00am**
Routine maintenance
- **December 15: 10R/28L 11:00am – 2:00pm**
Routine maintenance



No scheduled closures in January

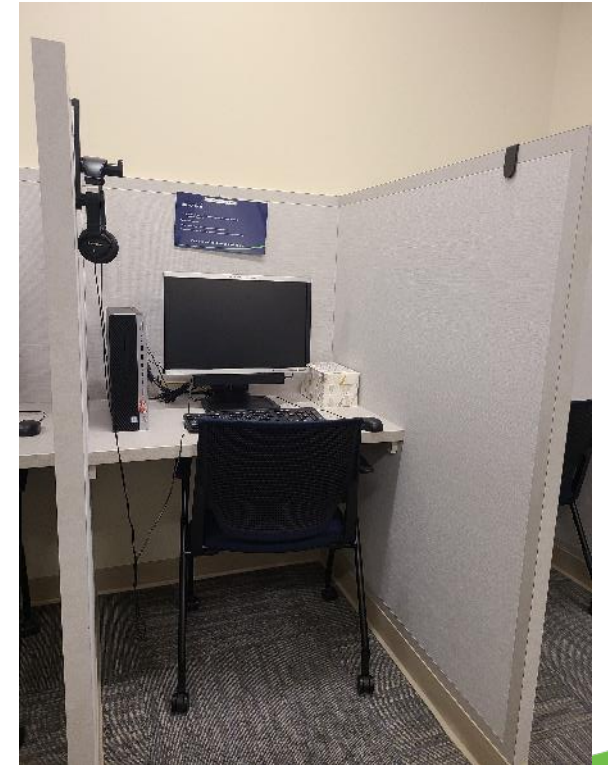
New Contracts & Leases

- Temporary license agreement with Crush The Curve Idaho
 - Use of Economy Parking Lot for COVID-19 testing
 - December 9 – 31, 2020
- US Bank Lease Buy Out
 - Remainder of lease (37 months) was bought out
 - Airport will list property with Colliers to find a new tenant



Construction Update

- New credentialing office completed and open



BOI Upgrade Update

Rental Car Garage Design RFP Posted December 16, 2020

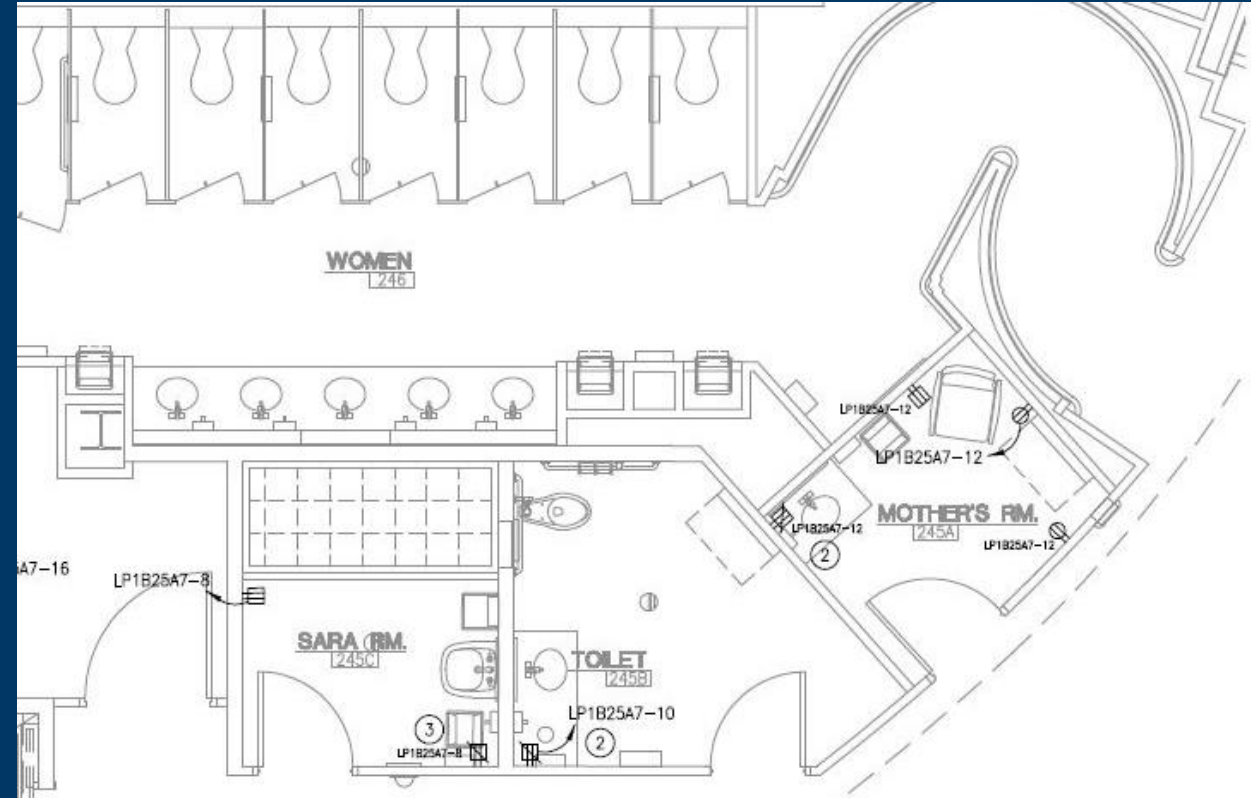
- Closes February 3, 2021
- The scope of work anticipated for this request for proposals includes planning, design, bid support, and construction administration services for the Boise Airport Consolidated Rental Car Facility

Public Parking Garage

- Completed schematic design
- Cleared City of Boise Design Review process
- Design is scheduled to be completed in June 2021

Service Animal Relief Area, Mothers Room, Family Restroom Design

- Design is 95% complete for SARA, Mothers Room and Family Restroom
- All three amenities will be located post-security, adjacent to the TSA checkpoint
- SARA and Nursing Mothers Room are required by federal regulation



Electronic Video Boards Replacement

- Project includes full replacement of all hardware and software associated with the current Multiuser Flight Information Display System (Flight Info., Baggage Carousel Info., gate displays etc.)
- Also includes additional wayfinding screens, method to monitor checkpoint wait times and average baggage delivery times
- Contract awarded to Neurilink and Simpleway
- Estimated Cost: \$850,000
- Project Timeline: 6-8 months



TSA Checkpoint Improvements

- The TSA checkpoint has added new technology that allows for a streamlined and more touchless procedure
- Added acrylic barriers in high-touch areas to reduce the spread of COVID-19



Paradies Lagardere 2020 Review

Airport Retail Concessionaire

- Overall sales down 48% while passenger traffic down 52%
- Revenue per enplanement increased from 2019
 - \$3.56 vs. \$3.14
- General Manager, Tara Sterling, awarded with “Most Valuable Peer” in the region
- Slated to implement new technology in 2021 that will revolutionize ordering, replenish product, and enhance processes for enhanced efficiencies

Paradies Lagardère
TRAVEL RETAIL



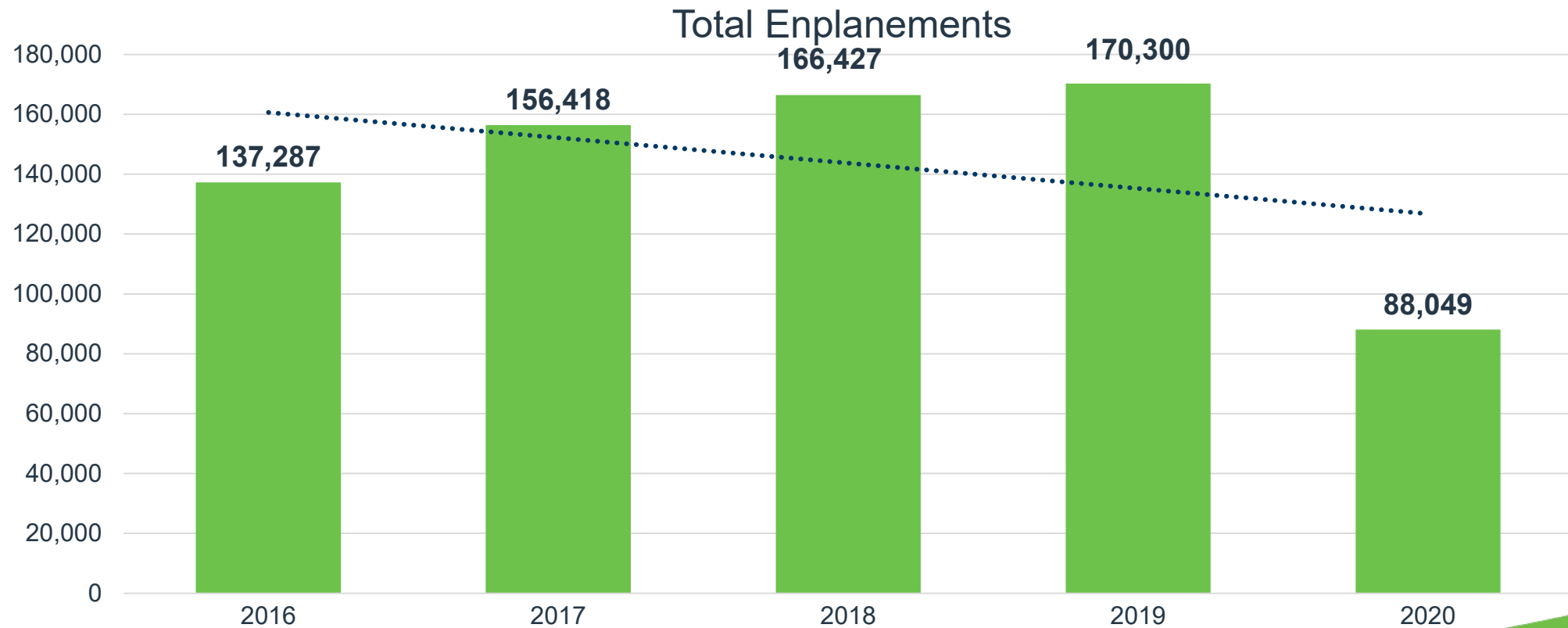
Inaugural Flight to Palm Springs

- Alaska began its daily service to Palm Springs
 - Winter seasonal service
 - Service runs through April 12, 2021



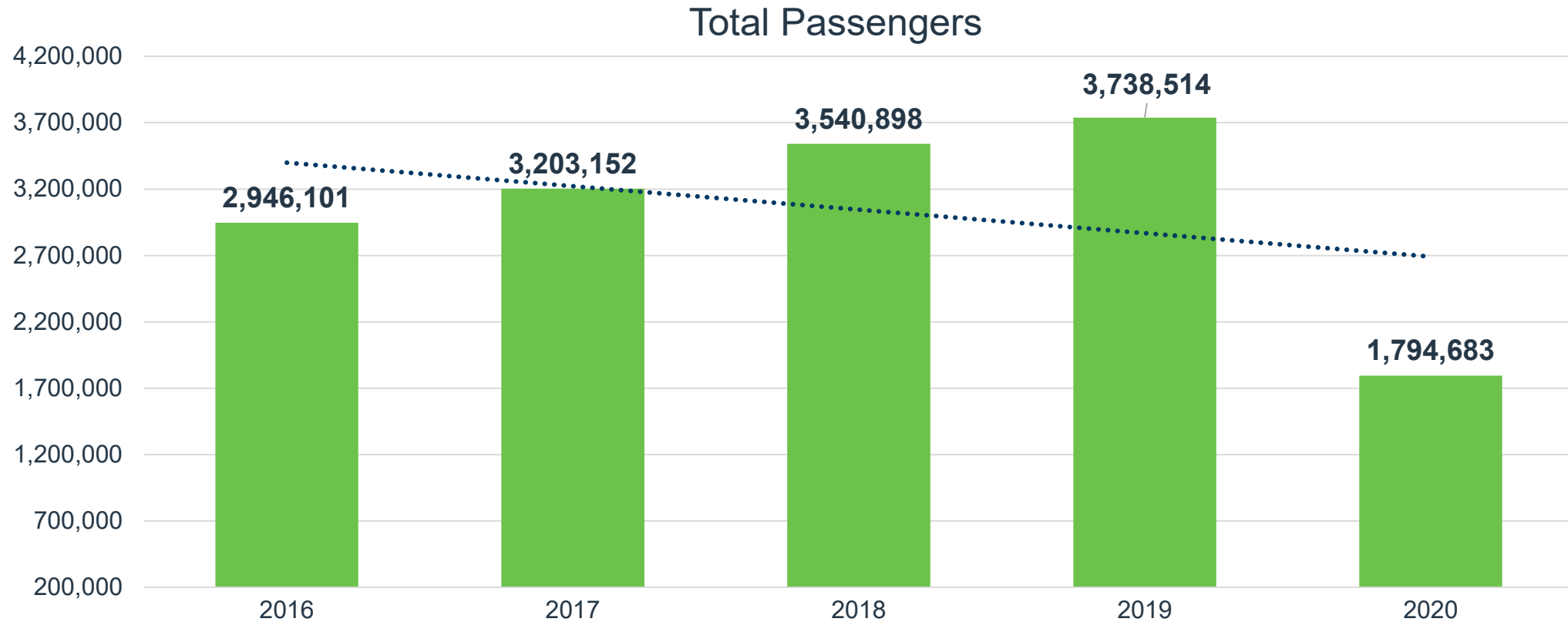
November Enplanements

Down 48% November 2020 over November 2019



2020 Total Passengers

Down 52% over 2019 (through November)



Top 10 Operating Revenue Description	FY 2021	FY 2020	\$ Change	% Change
Parking Lot	\$ 1,011,434	\$ 2,103,525	\$ (1,092,091)	-52%
Industrial Land Rent	\$ 655,730	\$ 598,328	\$ 57,403	10%
Rental Car Concession	\$ 598,678	\$ 968,437	\$ (369,759)	-38%
Terminal Rent – Airlines	\$ 500,528	\$ 595,353	\$ (94,825)	-16%
Signatory Airline Landing Fees	\$ 391,671	\$ 609,098	\$ (217,427)	-36%
Advertising	\$ 131,486	\$ 65,394	\$ 66,091	101%
Landings/Freight	\$ 117,018	\$ 141,922	\$ (24,903)	-18%
Terminal Rent – Non-Airlines	\$ 94,448	\$ 97,988	\$ (3,539)	-4%
Terminal Concessions - Food/Beverage	\$ 91,575	\$ 253,952	\$ (162,377)	-64%
Terminal Concessions - Retail	\$ 60,795	\$ 220,440	\$ (159,644)	-72%
Total Top 10 Operating Revenue	\$ 3,653,364	\$ 5,654,437	\$ (2,001,073)	--
Other Operating Revenue	\$ 392,634	\$ 469,739	\$ (77,105)	-16%
Total Operating Revenue	\$ 4,045,998	\$ 6,124,176	\$ (2,078,178)	-34%

Top 10 Operating Expenses Description	FY 2021	FY 2020	\$ Change	% Change
Personnel	\$ 1,465,948	\$ 1,361,892	\$ 104,056	8%
Policing Service	\$ 518,185	\$ 488,529	\$ 29,656	6%
Fire Service	\$ 490,347	\$ 490,732	\$ (385)	0%
Indirect Cost Reimbursement	\$ 356,558	\$ 381,670	\$ (25,112)	-7%
R/M – Structural/Electrical/Plumbing	\$ 180,445	\$ 113,333	\$ 67,112	59%
Power	\$ 128,110	\$ 126,581	\$ 1,529	1%
Parking Management	\$ 64,326	\$ 246,777	\$ (182,451)	-74%
R/M – Fleet Management	\$ 60,680	\$ 146,855	\$ (86,175)	-59%
Dues and Subscriptions	\$ 55,912	\$ 32,695	\$ 23,217	71%
Janitorial Services	\$ 49,184	\$ 34,002	\$ 15,183	45%
Total Top 10 Operating Expenses	\$ 3,369,694	\$ 3,423,065	--	--
Other Operating Expense	\$ 364,034	\$ 480,770	\$ (116,736)	-24%
Total Operating Expense	\$ 3,733,728	\$ 3,903,835	\$ (170,107)	-4%



Boise Airport

www.iflyboise.com