

The Boise Airport's October Commission Meeting was not held due to lack of physical presence required by Idaho Code § 74-203(5).



October Commission Report

Director's Update

Rebecca Hupp A.A.E.
Boise Airport Director

OCTOBER 6, 2021

September Runway Closures

- **September: 10L/28R 7:00am – 4:00pm**
Runway closed entire month due to Taxiway G project

Scheduled closures in October

- Runway 10L/28R remains closed for Taxiway G and Taxiway A projects



Construction Update

- Taxiway G Construction
 - Currently in phase 3 of 4
 - Includes paving, taxiway edge lights, and painting
 - Phase 3 is expected to be completed on October 15
 - Phase 4 is scheduled to begin October 16, and scheduled to last 35 days



Air Force One in Boise

- Air Force One flew into Boise September 13, 2021
- Airport Ops helped coordinate the event
- President Biden was in Boise to visit the NIFC campus



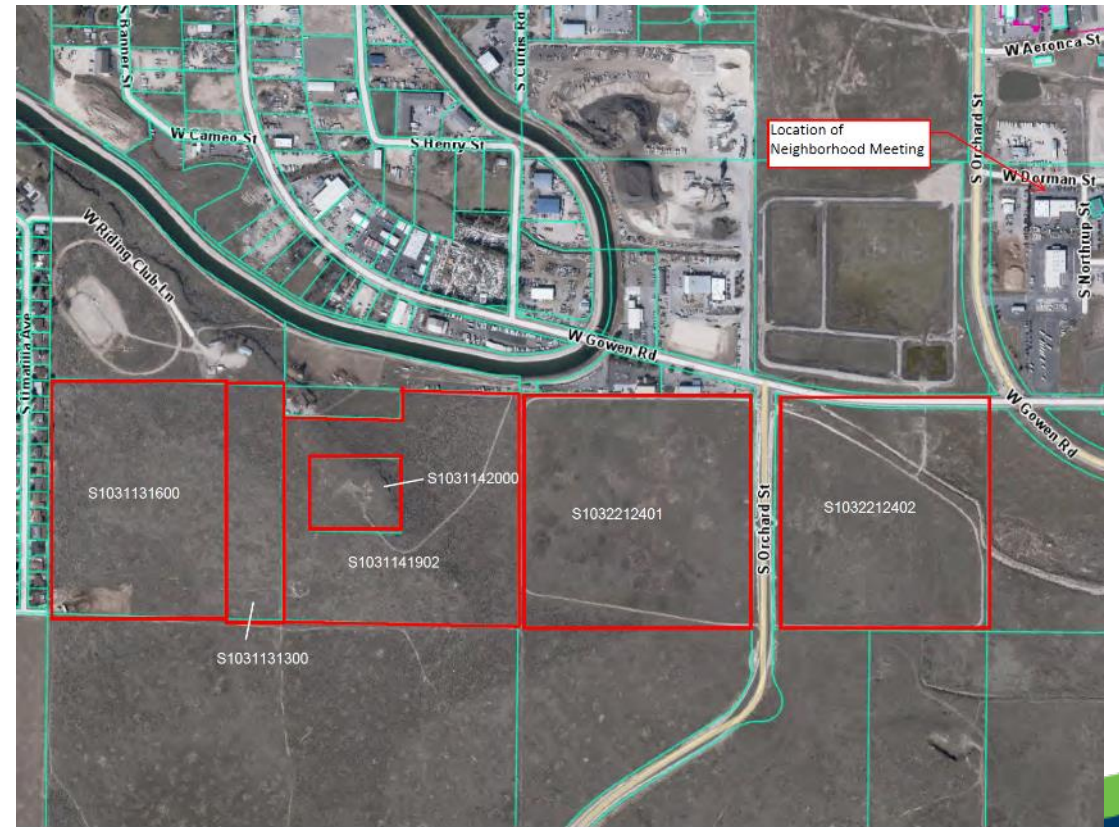
Airline Competition Plan

- The purpose of the Competition Plan is to highlight actions of the airport to reduce barriers to entry and enhance competitive access to the airport for the airline industry
- The plan is a requirement for medium-hub airports
- Airport is currently reviewing a draft competition plan



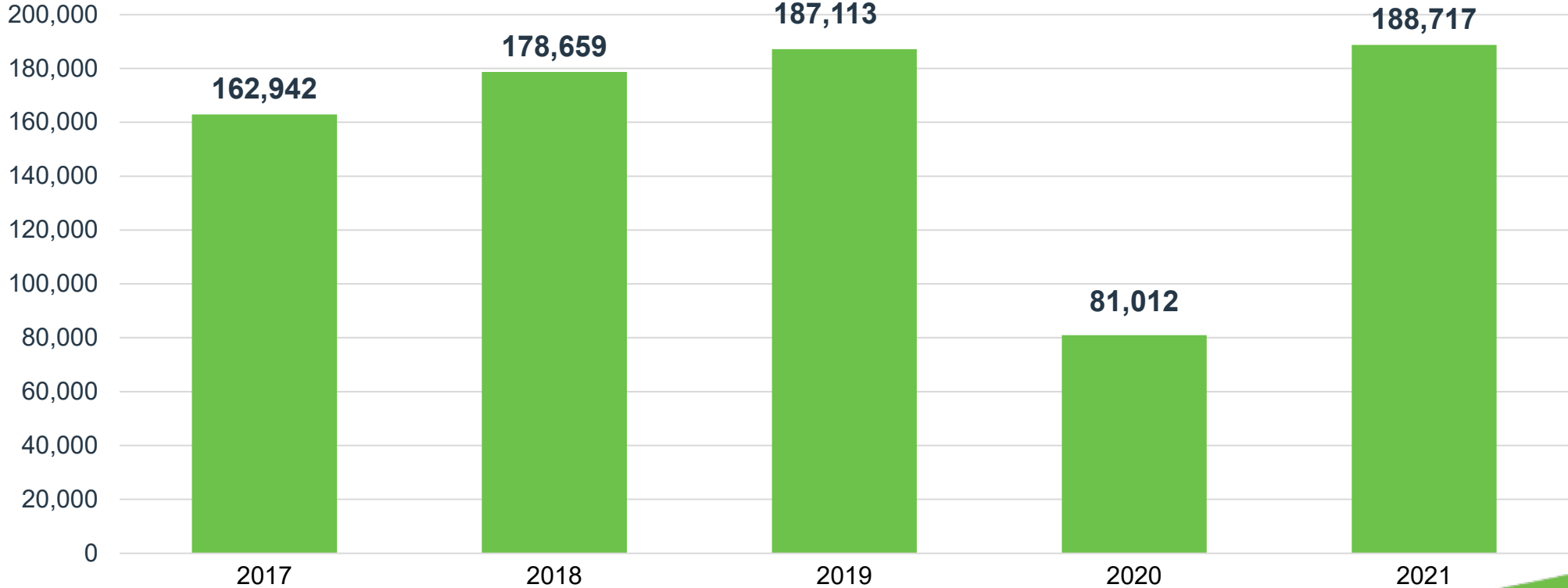
Neighborhood Meetings

- The airport will hold two neighborhood meetings about a proposed re-zone on approximately 160 acres
 - October 13, 2021
 - October 14, 2021
- Existing property is vacant
- Applying to rezone to M-1D, light industrial zone with design review overlay



August Enplanements

Passenger enplanements were **UP 1%** August 2021 over August 2019



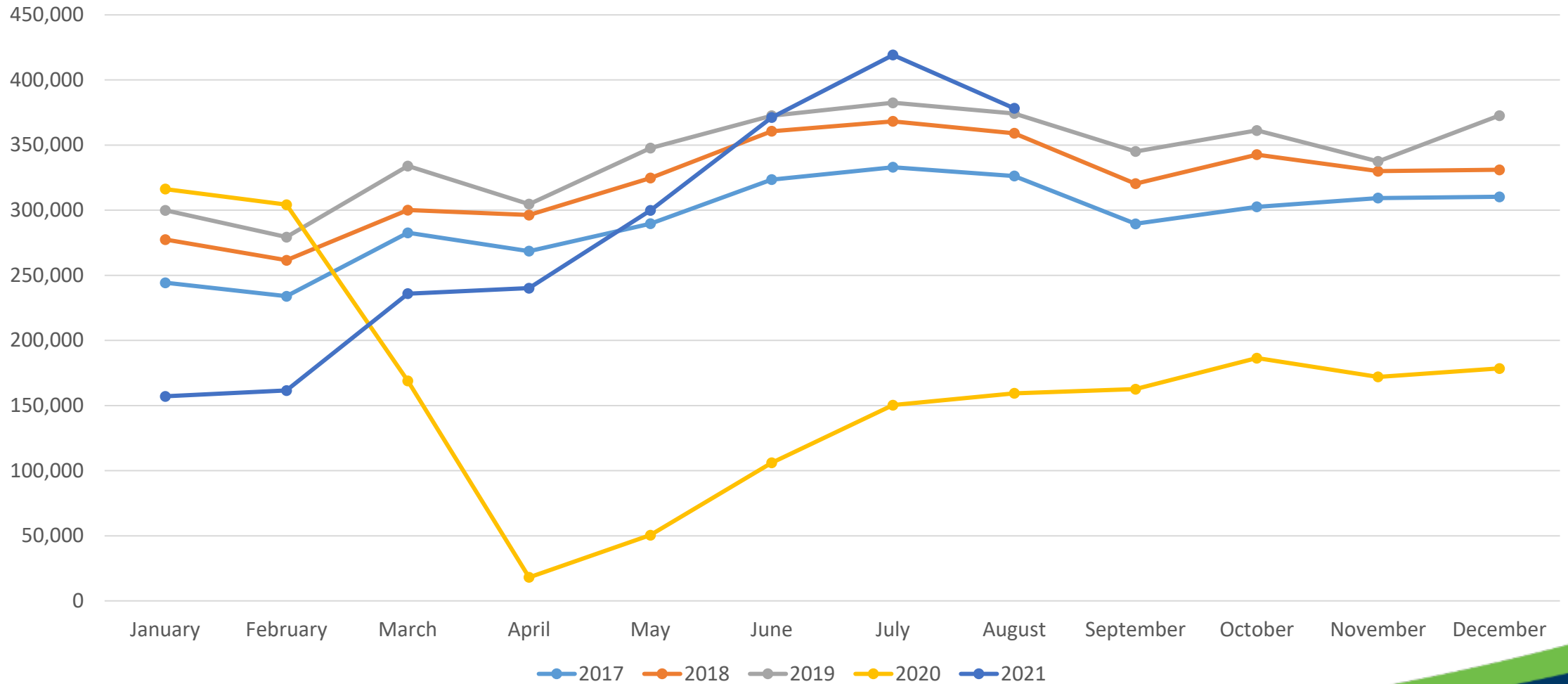
2021 Total Passengers

Up 78% over 2020 (through August)

Down 16% over 2019 (through August)



Historic Monthly Passengers



Forward Looking Schedule

Month	Departures compared to 2019	Seats compared to 2019
September	8%	11%
October	0%	6%
November	(1%)	3%
December	(1%)	4%

Top 10 Operating Revenue Description	FY 2021	FY 2020	\$ Change	% Change
Parking Lot	\$ 8,505,849	\$ 7,194,954	\$ 1,310,895	18%
Rental Car Concession	\$ 4,632,051	\$ 3,486,606	\$ 1,145,445	33%
Industrial Land Rent	\$ 3,745,929	\$ 3,585,604	\$ 160,325	4%
Terminal Rent – Airlines	\$ 2,933,497	\$ 3,073,007	\$ (139,510)	-5%
Signatory Airline Landing Fees	\$ 2,698,655	\$ 2,308,621	\$ 390,034	17%
Terminal Concessions – Retail	\$ 874,727	\$ 725,811	\$ 148,916	21%
Landings/Freight	\$ 710,668	\$ 570,848	\$ 139,820	24%
Terminal Concessions - Food/Beverage	\$ 681,800	\$ 723,194	\$ (41,394)	-6%
Terminal Rent – Non-Airline	\$ 583,136	\$ 552,374	\$ 30,762	6%
Employee Parking Permits	\$ 433,926	\$ 426,276	\$ 7,650	2%
Total Top 10 Operating Revenue	\$ 25,800,238	\$ 22,647,295	\$ 3,152,943	
Other Operating Revenue	\$ 2,552,663	\$ 2,356,341	\$ 196,322	8%
Total Operating Revenue	\$ 28,352,901	\$ 25,003,636	\$ 3,349,265	13%

Top 10 Operating Expenses Description	FY 2021	FY 2020	\$ Change	% Change
Personnel	\$ 8,618,952	\$ 8,057,204	\$ 561,748	7%
Policing Service	\$ 2,850,015	\$ 2,686,908	\$ 163,107	6%
Fire Service	\$ 2,696,906	\$ 2,699,024	\$ (2,118)	0%
Indirect Cost Reimbursement	\$ 1,660,068	\$ 1,644,725	\$ 15,343	1%
Parking Management	\$ 1,291,735	\$ 1,309,673	\$ (17,938)	-1%
R/M – Structural/Electrical/Plumbing	\$ 1,104,614	\$ 987,259	\$ 117,355	12%
Power	\$ 743,005	\$ 697,197	\$ 45,808	7%
Chemicals	\$ 386,611	\$ 388,033	\$ (1,422)	0%
R/M – Fleet Services	\$ 352,243	\$ 466,558	\$ (114,315)	-25%
R/M – System Maintenance	\$ 253,735	\$ 49,232	\$ 204,503	415%
Total Top 10 Operating Expenses	\$ 19,957,883	\$ 18,985,813		
Other Operating Expense	\$ 3,621,341	\$ 3,491,351	\$ 129,990	4%
Total Operating Expense	\$ 23,579,224	\$ 22,477,164	\$ 1,102,060	5%



Boise Airport

www.iflyboise.com