



# November Commission Report

## *Director's Update*

Rebecca Hupp A.A.E.  
Boise Airport Director

NOVEMBER 3, 2021

# October Runway Closures

- **October 1-19: 10L/28R**  
Runway closed for Taxiway G project
- **October 19-20: 10R/28L**  
Runway closed for Taxiway G project
- **October 20-current: 10L/28R**  
Runway closed for Taxiway G project

## Scheduled closures in November

- **November 1-30: 10L/28R**  
Runway closed for Taxiway G project



# Suspicious Item Investigated

- On October 22, Airport Operations was called about a suspicious item on the lower curb
- Airport Operations and Boise Police investigated the item
- Lower curb was closed as a precaution, and traffic was re-routed to upper curb
- Item was cleared after approximately 2 hours and deemed not a threat





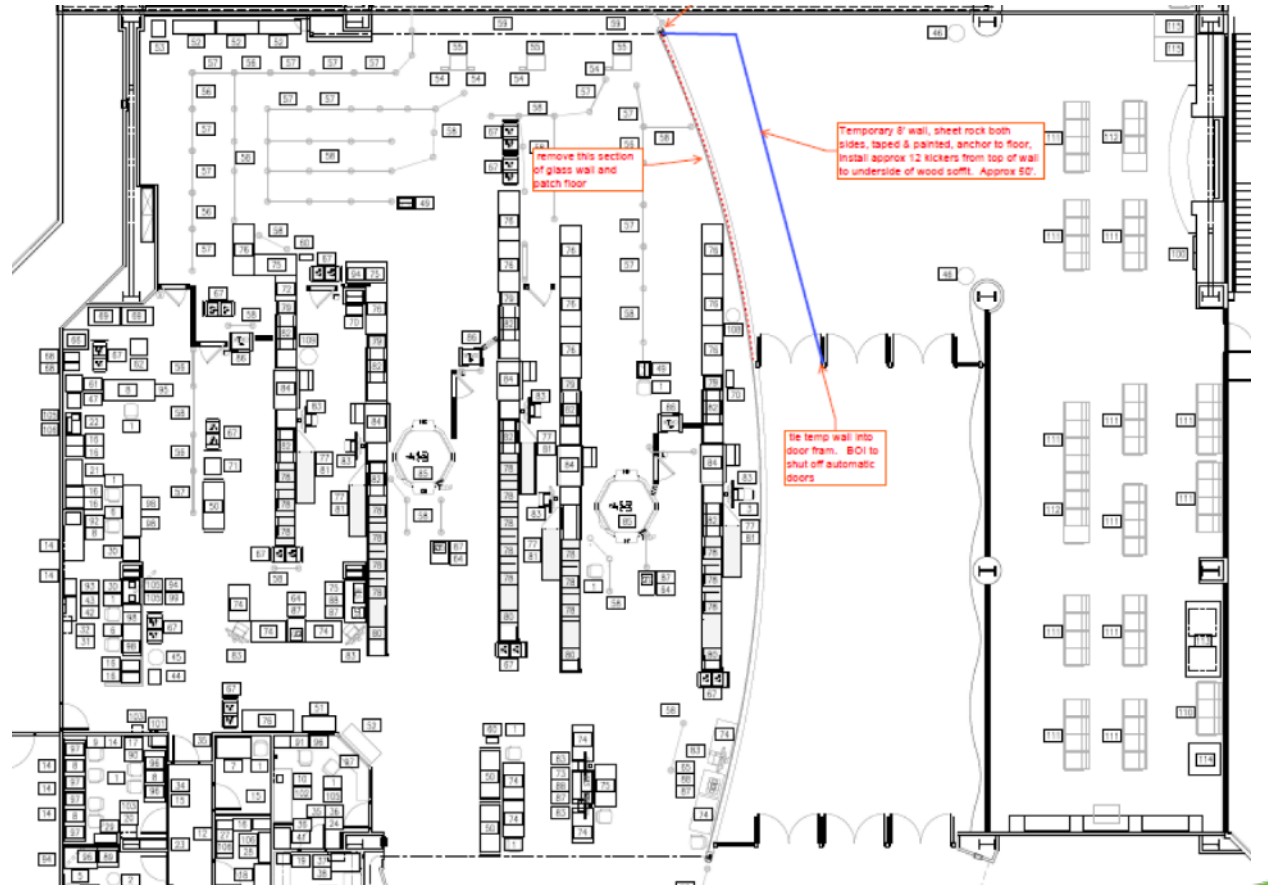
# Construction Update

- Taxiway G Construction
  - Phase 3 was completed on October 19, 2021
  - Phase 4, the final phase, is currently underway
  - Project is expected to be completed by end of November



# Checkpoint Expansion

- Airport is expanding TSA checkpoint to include a 7th lane due to passenger increase
- Construction is scheduled to begin in November and be completed by Summer 2022



# Idaho Falls and Las Vegas Air Service

- Alaska Airlines will begin nonstop service to Idaho Falls and Las Vegas beginning June 16, 2022
- With these additions, Alaska has begun/announced new service to 8 destinations in the past year:
  - Palm Springs, Chicago O'Hare, Austin, Pullman, Everett, Phoenix, Idaho Falls, and Las Vegas
- Boise Airport now has 29 nonstop destinations





# Parking Update

- Fridays and Saturdays are peak days for parking
- During peak days, close-in parking reaches capacity
- Economy Lot (shuttle lot) reached 65% peak capacity in October
- Airport is purchasing new ADA shuttle to accommodate increased passenger demand in the shuttle lot



# New Airport Employees

**Brett Korporaal**  
*Project Manager*



**Jen Hoffman**  
*Project Manager*





# New Airport Employees

**Milka Minegar**

*Administration Specialist Sr.*



**Shawna Samuelson**

*Communication & Marketing Manager*



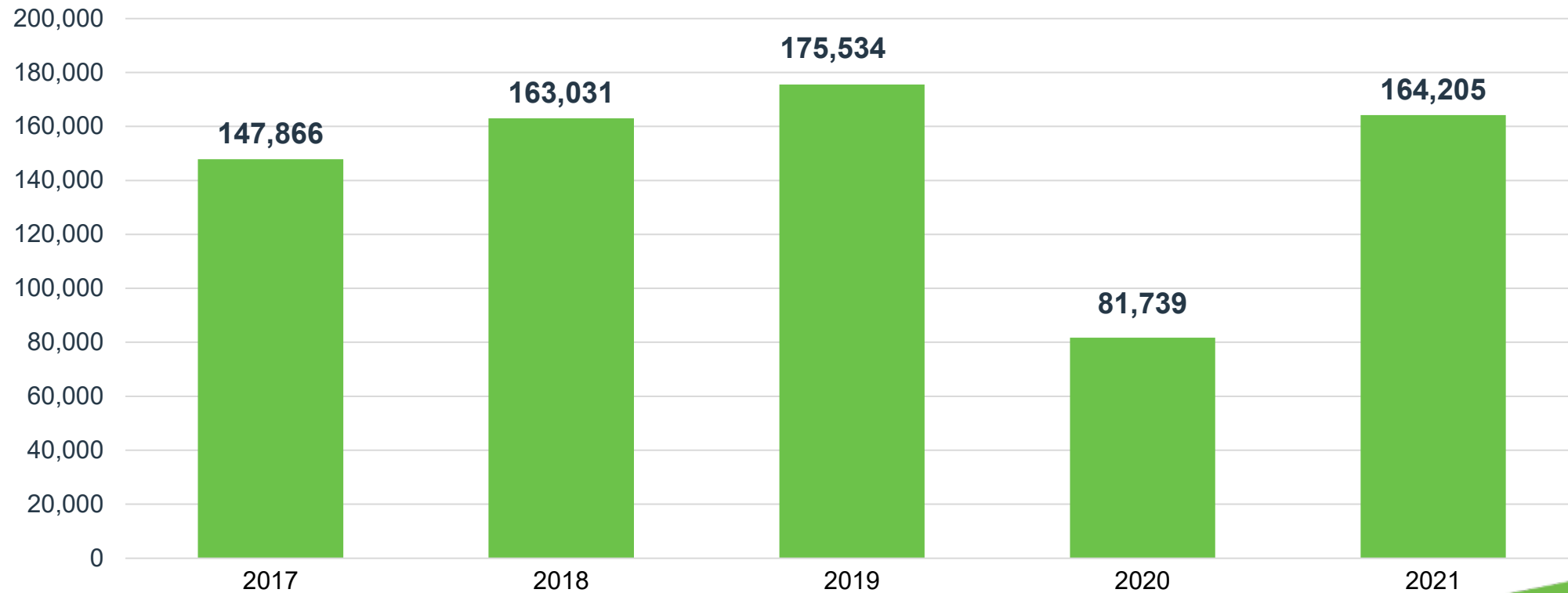
# Rebecca Hupp Receives Two Prestigious Awards

- In October, Director Hupp was recognized with two awards
- **Airport Executive of the Year**
  - *Awarded by Northwest American Association of Airport Executives (NWAAAE)*
- **Director of the Year – Medium Hub Airports Division**
  - *Awarded by Airport Experience News*



# September Enplanements

Passenger enplanements were **DOWN 6%** September 2021 over September 2019

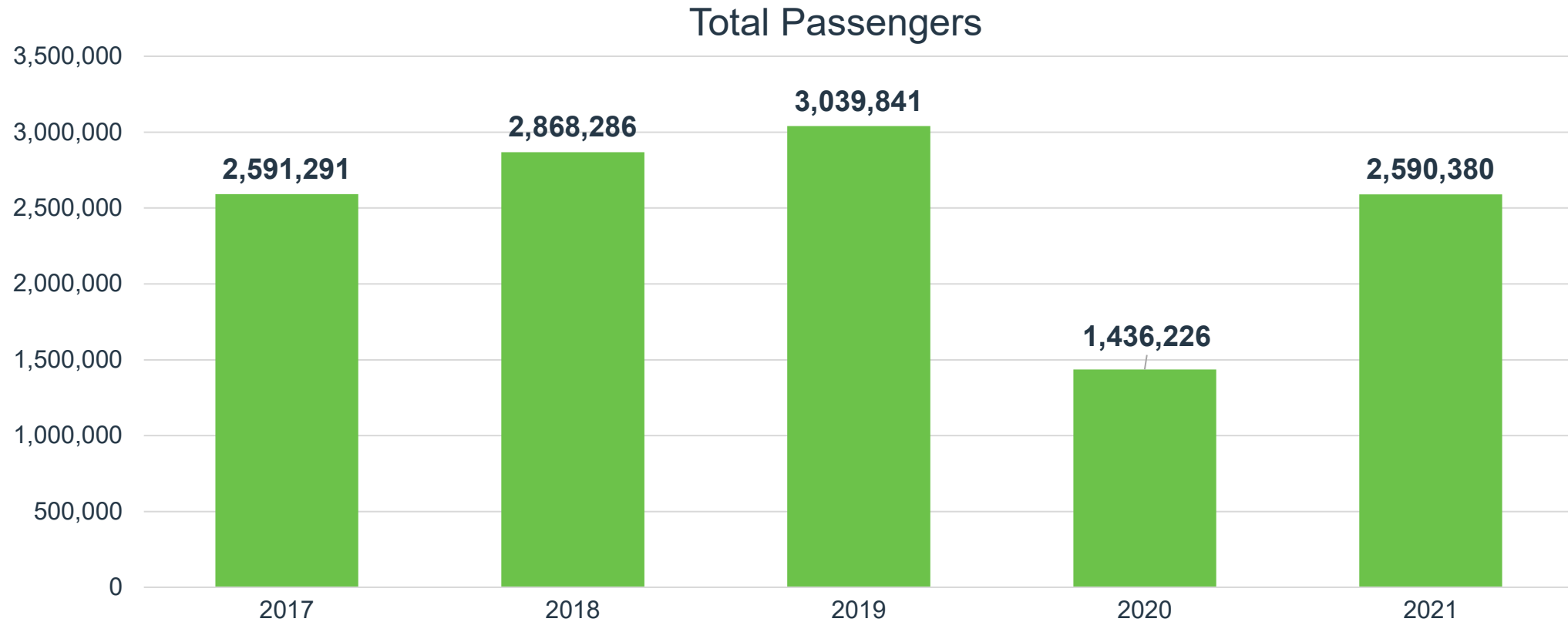




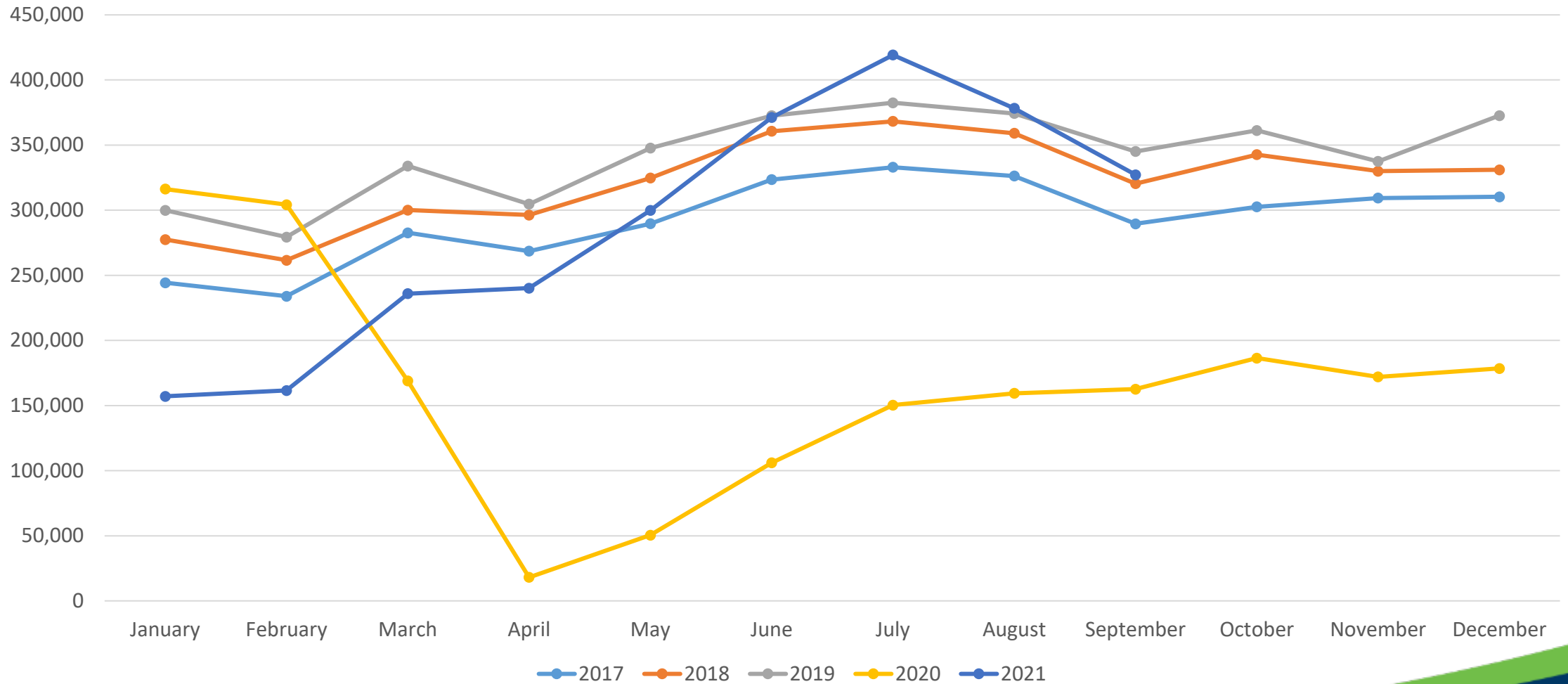
# 2021 Total Passengers

*Up 80% over 2020 (through September)*

*Down 15% over 2019 (through September)*



# Historic Monthly Passengers

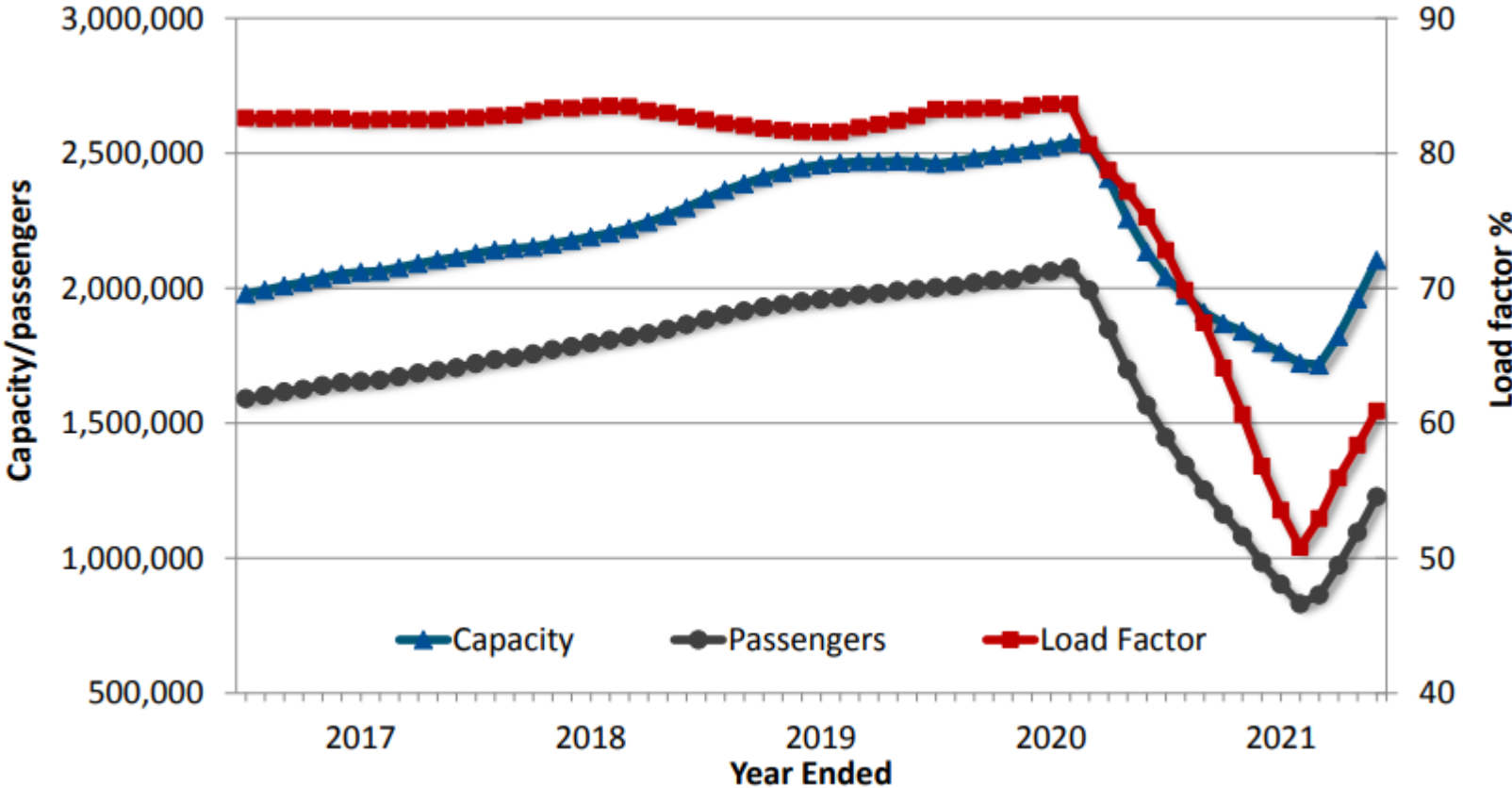


<b>Top 10 Operating Revenue Description</b>	<b>FY 2021</b>	<b>FY 2020</b>	<b>\$ Change</b>	<b>% Change</b>
Parking Lot	\$ 9,574,907	\$ 7,606,448	\$ 1,968,459	26%
Rental Car Concession	\$ 5,541,667	\$ 4,707,578	\$ 834,090	18%
Industrial Land Rent	\$ 4,084,318	\$ 3,914,418	\$ 169,901	4%
Terminal Rent – Airlines	\$ 3,295,971	\$ 3,329,344	\$ (33,373)	-1%
Signatory Airline Landing Fees	\$ 2,877,254	\$ 2,482,983	\$ 394,272	16%
Terminal Concessions – Retail	\$ 1,093,016	\$ 671,521	\$ 421,495	63%
Landings/Freight	\$ 806,447	\$ 602,386	\$ 204,060	34%
Terminal Concessions - Food/Beverage	\$ 772,753	\$ 769,105	\$ 3,649	0%
Terminal Rent – Non-Airline	\$ 658,699	\$ 606,419	\$ 52,281	9%
Employee Parking Permits	\$ 500,740	\$ 504,788	\$ (4,048)	-1%
<b>Total Top 10 Operating Revenue</b>	<b>\$ 29,205,773</b>	<b>\$ 25,194,988</b>	<b>\$ 4,010,785</b>	<b>--</b>
Other Operating Revenue	\$ 3,093,291	\$ 2,585,621	\$ 507,670	20%
<b>Total Operating Revenue</b>	<b>\$ 32,299,064</b>	<b>\$ 27,780,609</b>	<b>\$ 4,518,455</b>	<b>16%</b>



<b>Top 10 Operating Expenses Description</b>	<b>FY 2021</b>	<b>FY 2020</b>	<b>\$ Change</b>	<b>% Change</b>
Personnel	\$ 9,509,794	\$ 8,941,225	\$ 568,569	6%
Policing Service	\$ 3,109,107	\$ 2,931,172	\$ 177,935	6%
Fire Service	\$ 2,942,079	\$ 2,944,390	\$ (2,311)	0%
Indirect Cost Reimbursement	\$ 1,798,959	\$ 1,842,475	\$ (43,517)	-2%
Parking Management	\$ 1,398,608	\$ 1,444,186	\$ (45,578)	-3%
R/M – Structural/Electrical/Plumbing	\$ 1,337,987	\$ 1,243,366	\$ 94,621	8%
Power	\$ 828,422	\$ 780,466	\$ 47,956	6%
Chemicals	\$ 432,274	\$ 350,676	\$ 81,598	23%
R/M – Fleet Services	\$ 410,714	\$ 510,585	\$ (99,871)	-20%
Professional Services	\$ 303,286	\$ 335,646	\$ (32,360)	-10%
<b>Total Top 10 Operating Expenses</b>	<b>\$ 22,071,229</b>	<b>\$ 21,324,187</b>	<b>--</b>	<b>--</b>
Other Operating Expense	\$ 4,396,546	\$ 4,076,870	\$ 319,676	8%
<b>Total Operating Expense</b>	<b>\$ 26,467,775</b>	<b>\$ 25,401,057</b>	<b>\$ 1,066,718</b>	<b>4%</b>

# Boise Traffic/Capacity Trends



YE June 2021 capacity was down 1% while passengers were down 22%, leading to a 14% decrease in the average load factor (61%); **however, 2021 showed significant movement towards recovery.**

# Top Origination/Destination Markets

Rank	Destination	O&D Pax	O&D Revenue	Average Fare (\$)	Yield (c)	% Change Since Q2 2020			
						Pax	Rev	Fare	Yield
1	Seattle, WA	79,933	5,443,583	68	17	466	310	(28)	(28)
2	Los Angeles, CA	51,794	4,735,369	91	14	379	433	11	11
3	Phoenix, AZ (PHX)	46,486	4,660,019	100	14	330	296	(8)	(8)
4	Las Vegas, NV	39,691	3,626,616	91	18	417	667	48	48
5	San Diego, CA	33,771	3,245,830	96	13	350	392	10	10
6	Denver, CO	32,512	3,786,170	116	18	213	273	19	19
7	Sacramento, CA	29,572	2,608,665	88	20	738	791	6	6
8	Portland, OR	29,364	3,412,600	116	34	441	400	(7)	(7)
9	Oakland, CA	23,924	1,856,162	78	15	394	395	0	0
10	Spokane, WA	22,003	2,070,823	94	33	895	855	(4)	(4)
11	Orange County, CA	20,607	1,529,377	74	11	357	271	(19)	(19)
12	San Francisco, CA	16,961	1,901,855	112	21	557	498	(9)	(9)
13	Orlando, FL (MCO)	16,513	2,589,997	157	7	100%+	892	(12)	(12)
14	Dallas, TX (DFW)	13,997	2,556,018	183	14	305	310	1	1
15	Chicago, IL (ORD)	12,571	2,090,277	166	12	524	389	(22)	(22)
16	Salt Lake City, UT	12,146	2,091,922	172	59	312	538	55	55
17	San Jose, CA	12,007	1,326,084	110	21	296	291	(1)	(1)
18	Minneapolis, MN	11,546	1,961,682	170	15	359	354	(1)	(1)
19	Anchorage, AK	10,873	1,787,843	164	9	307	226	(20)	(20)
20	Nashville, TN	9,932	1,316,071	133	8	491	388	(18)	(18)
<b>Total/Average</b>		<b>890,007</b>	<b>122,454,241</b>	<b>138</b>	<b>13</b>	<b>417</b>	<b>423</b>	<b>1</b>	<b>(7)</b>

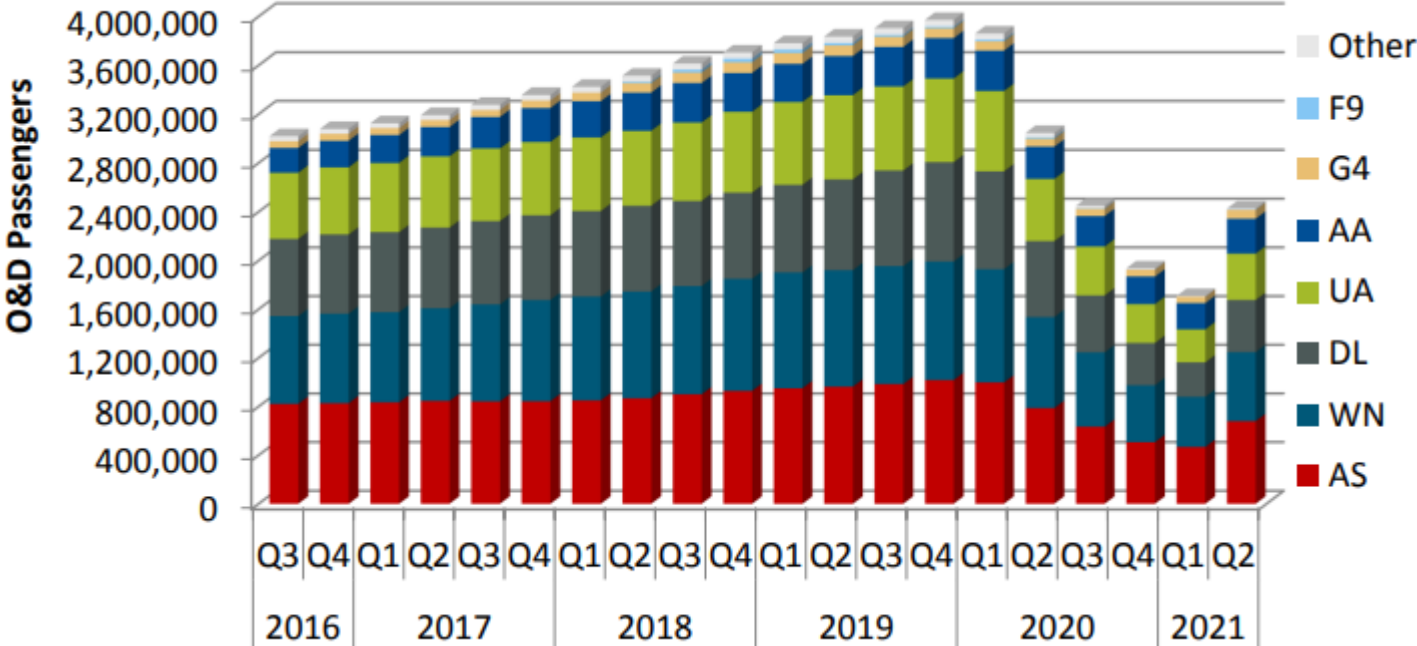
The increase in passengers and revenue for Q2 2021 reflects the significant impact of COVID-19 on Q2 2020.



# Boise Airline Market Share

Alaska and Delta each gained 1% of share in the latest year-ended period.

Southwest and American Airlines each lost 1% of share.



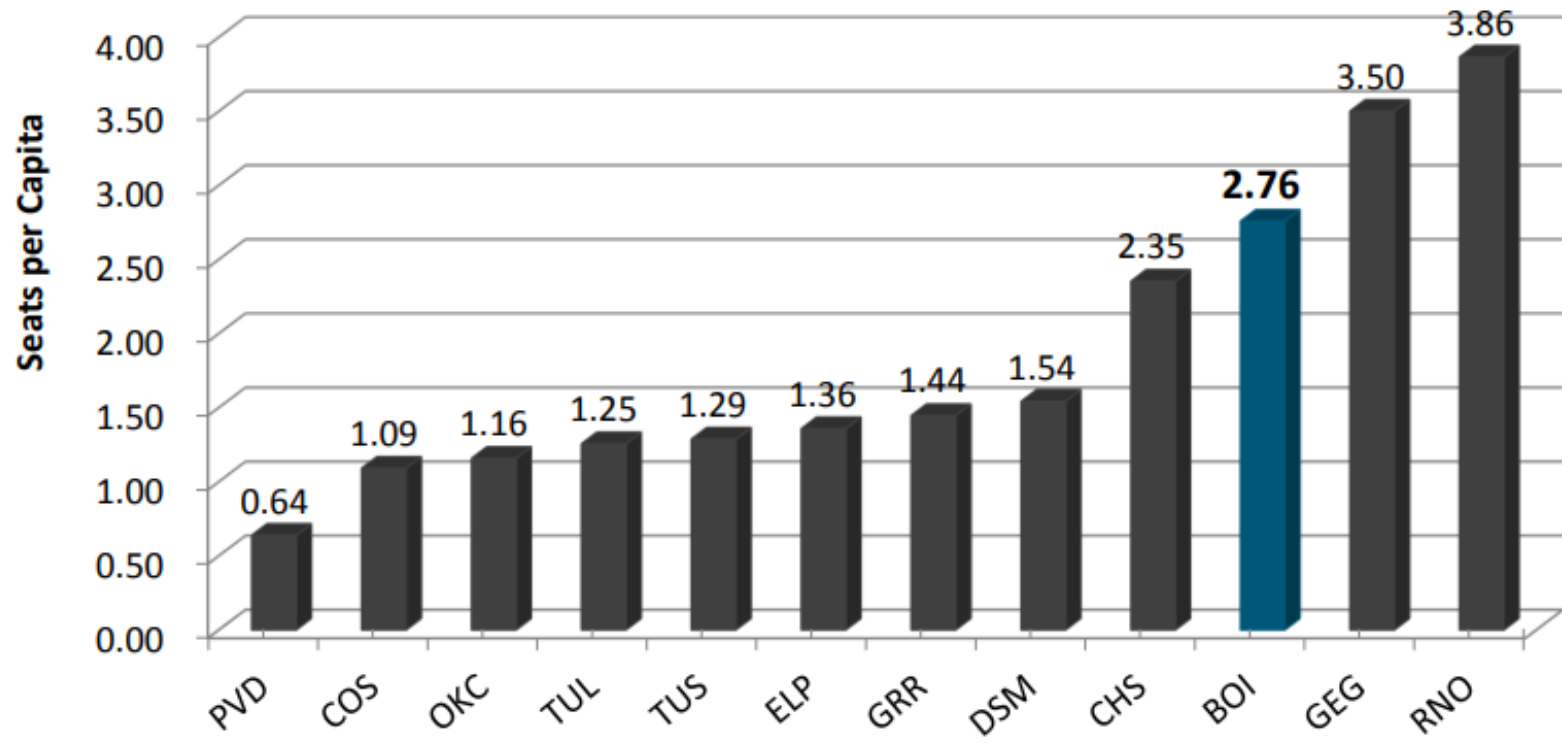
Year	Quarter	Airline Market Share							
		AS	WN	DL	UA	AA	G4	F9	Other
2019	Q3	25%	25%	20%	18%	8%	2%	1%	1%
	Q4	26%	25%	21%	17%	8%	2%	0%	1%
2020	Q1	26%	24%	21%	17%	9%	2%	0%	1%
	Q2	26%	25%	20%	17%	9%	2%	0%	1%
	Q3	26%	25%	19%	17%	10%	2%	0%	1%
	Q4	26%	24%	18%	16%	12%	3%	0%	1%
2021	Q1	27%	24%	17%	16%	13%	3%	0%	0%
	Q2	28%	23%	18%	16%	12%	3%	0%	0%

# Boise Forward Looking Schedule

Airline	Destination	Change % vs. November 2019 to April 2020											
		Nov 2021		Dec 2021		Jan 2022		Feb 2022		Mar 2022		Apr 2022	
		Flts	Seats	Flts	Seats	Flts	Seats	Flts	Seats	Flts	Seats	Flts	Seats
<b>Total</b>		<b>(4%)</b>	<b>0%</b>	<b>(13%)</b>	<b>(9%)</b>	<b>(2%)</b>	<b>3%</b>	<b>(3%)</b>	<b>1%</b>	<b>0%</b>	<b>3%</b>	<b>119%</b>	<b>99%</b>



# Seats Per Capita Comparison



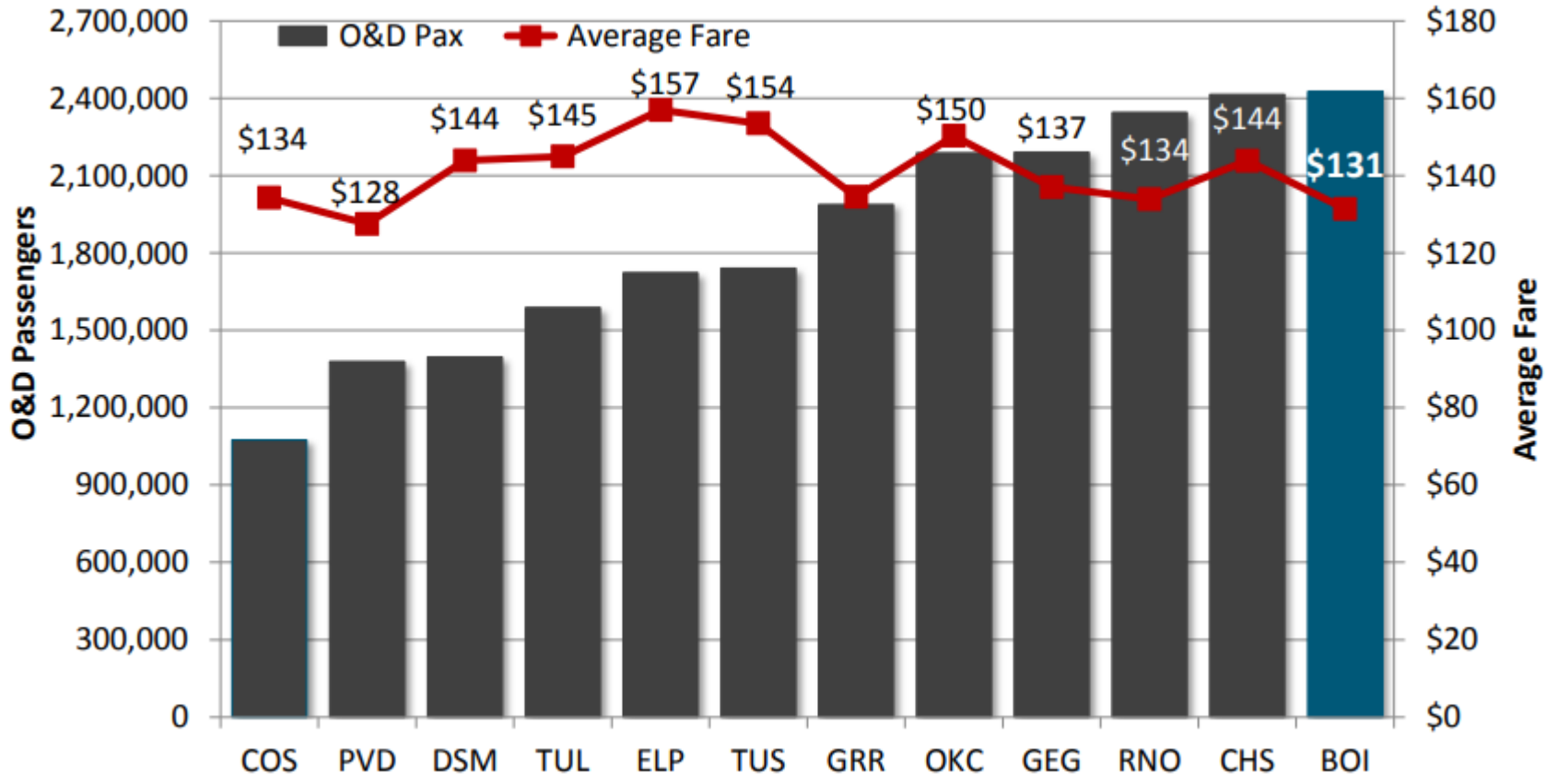
Average:  
1.60

Boise exceeds all comparison markets except Spokane and Reno in seats per capita.

**Boise increased from 2.28 to 2.76 from YE Q1 2021 to YE Q2 2021.**



# Origination/Destination Passenger and Airfare Comparison



Boise ranked number one in terms of O&D passengers and had the 2<sup>nd</sup> lowest fare among compare markets.

# Year-Over-Year Comparisons

Airport	2021 MSA Population	YE Q2 2021			YOY Change		
		# of Nonstop Destinations	O&D Pax	Seats	# of Nonstop Destinations	O&D Pax	Seats
Reno, NV	486,194	22	2,345,634	1,878,388	0	(26%)	(20%)
Spokane, WA	573,089	19	2,190,900	2,004,503	2	(24%)	(1%)
Des Moines, IA	711,405	24	1,396,114	1,095,328	(1)	(33%)	(24%)
<b>Boise, ID</b>	<b>763,645</b>	<b>24</b>	<b>2,425,858</b>	<b>2,104,261</b>	<b>5</b>	<b>(20%)</b>	<b>(1%)</b>
Colorado Springs, CO	764,644	10	1,074,184	832,378	(3)	(11%)	0%
Charleston, SC	819,130	36	2,414,926	1,925,427	3	(28%)	(15%)
El Paso, TX	872,277	15	1,723,328	1,182,580	(1)	(29%)	(33%)
Tulsa, OK	1,012,167	18	1,588,833	1,268,868	1	(25%)	(20%)
Tucson, AZ	1,066,926	19	1,740,165	1,371,092	0	(34%)	(24%)
Grand Rapids, MI	1,091,241	32	1,988,161	1,575,982	0	(25%)	(13%)
Oklahoma City, OK	1,436,243	22	2,188,347	1,659,137	(7)	(28%)	(25%)
Providence, RI	1,630,540	21	1,378,579	1,036,903	(6)	(51%)	(45%)

Boise was tied with Spokane for the second smallest decrease in seats year-over-year.

Boise had the 2nd lowest percentage decrease in passengers.

The logo consists of three curved, overlapping shapes: a light blue shape on the left, a green shape in the middle, and a darker blue shape on the right, all pointing towards the right.

# Boise Airport

[www.iflyboise.com](http://www.iflyboise.com)