



# April Commission Report

## *Director's Update*

Given by Rebecca Hupp, Airport Director  
Boise Airport

APRIL 6, 2022

# In Memory of Zack Thompson



# March Runway Closures

- **RWY 10R/28L:**

- 3/7 & 3/14: Closed 9:00 – 10:00am BOI light maintenance
- 3/28: Closed 8:00 – 10:00am FAA Tech-Ops VASI work/BOI light maintenance and AFM work

- **RWY 10L/28R:**

- 3/9: Closed 9:00am – 4:00pm FAA Tech-Ops PAPI work/ BOI light maintenance and AFM work
- 3/14: Closed 8:00 – 9:00am BOI light maintenance
- 3/21: 8:00am – 12:00pm FAA Tech-Ops REIL work/BOI light maintenance and AFM work



# Taxilane S Widening

- **Notice to Proceed was issued to Central Paving on March 23, 2022**
  - Currently working on the north side of Taxilane S (Phase 1) and the start of the new cargo apron to the south (Phase 6)
  - This work includes widening of the shoulder for the ultimate build from a TDG III to TDG 5
  - Excavation for enlargement of the stormwater retention pond
  - Clearing on the cargo apron site



# Parking Garage Construction Update

## Public Garage

- Tower crane to arrive onsite 4/19/22
- Parking office is 75% framed and roof is scheduled to start 4/5/22
- Pedestrian bridge piers have been placed and forms for new retaining wall under the pedestrian bridge are being erected

## Employee Garage

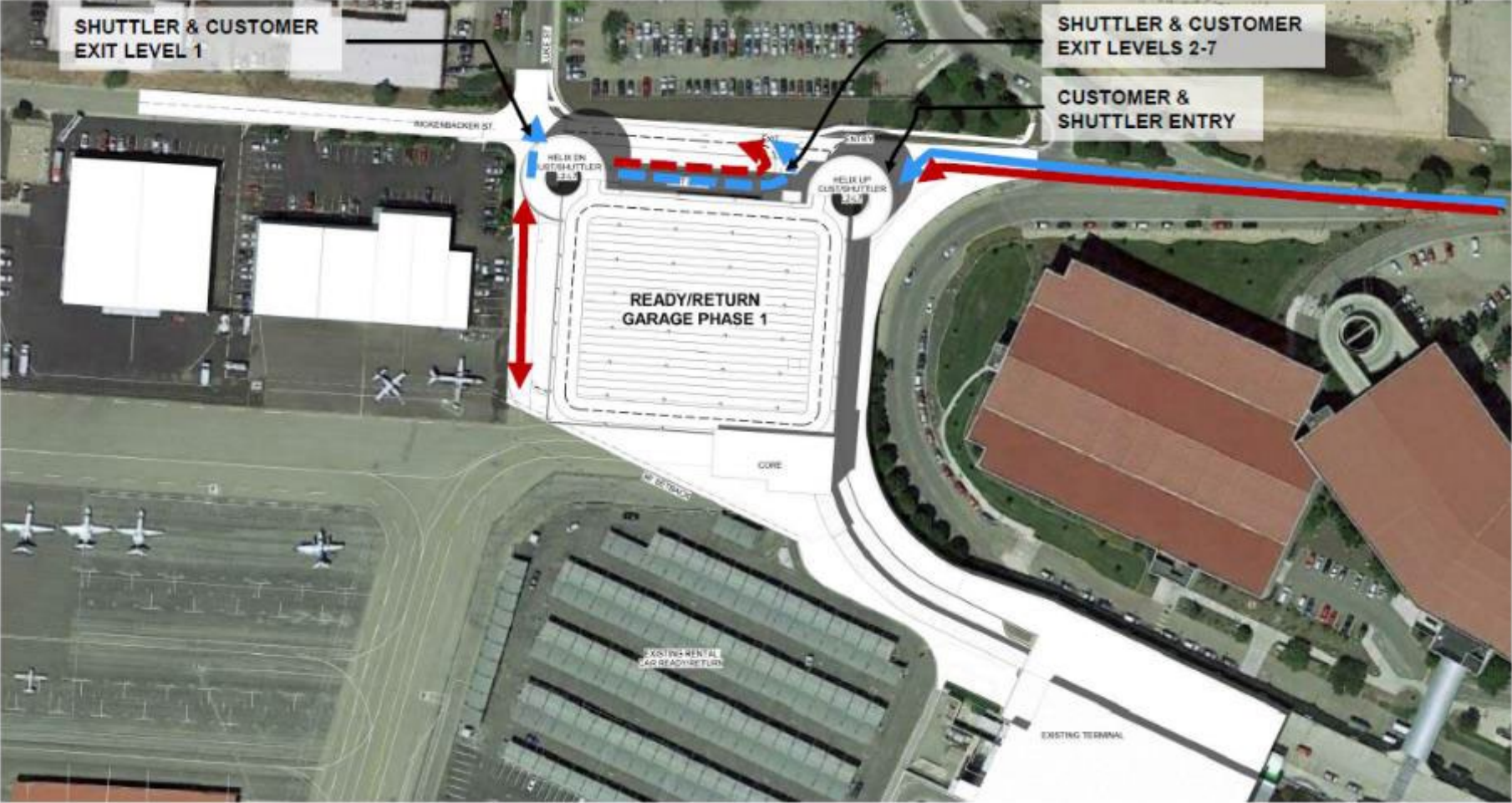
- Excavation and grading for garage footings in progress



Pedestrian bridge piers

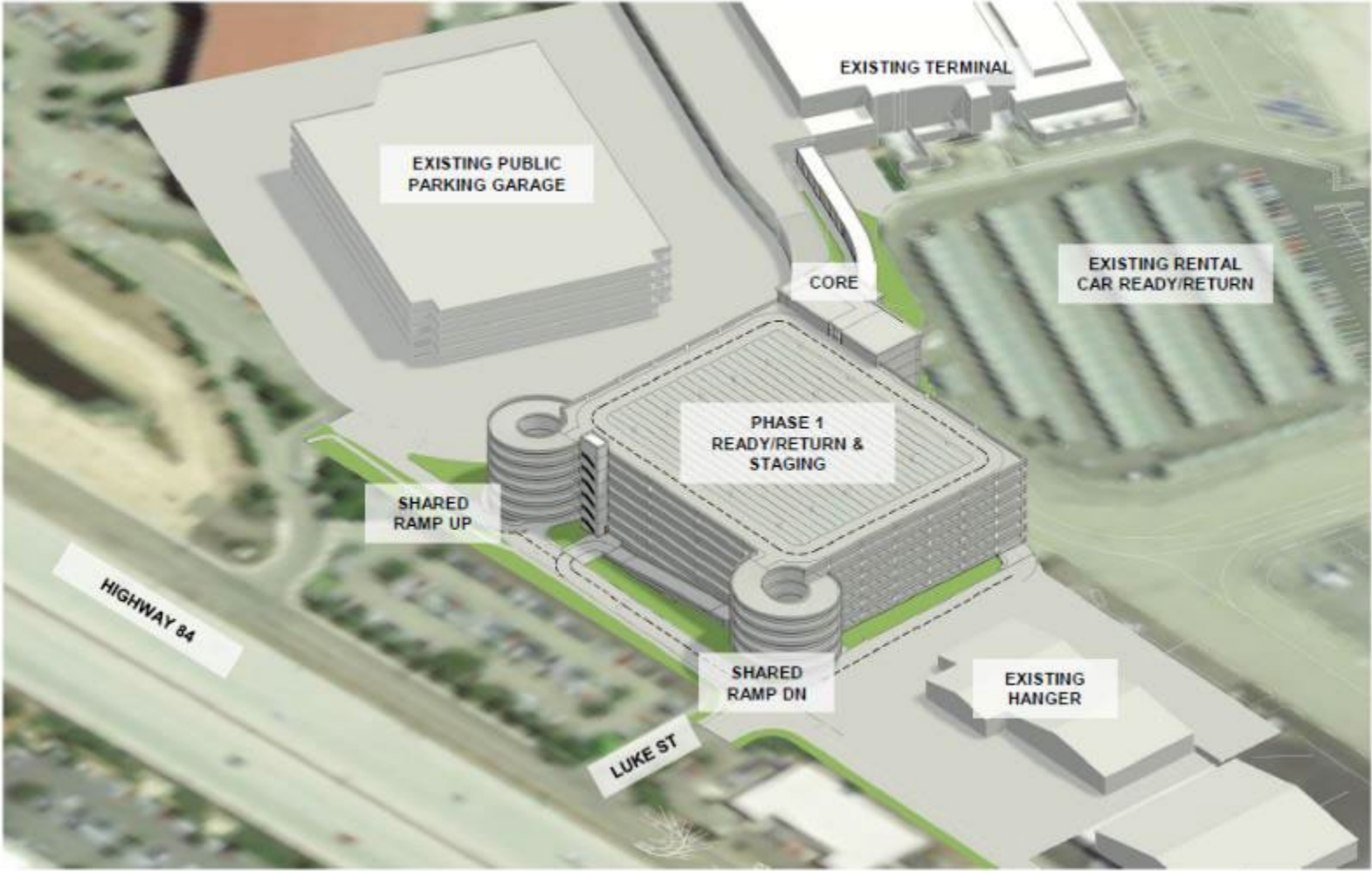
# CONRAC Design Charette

## Phase 1 site plan

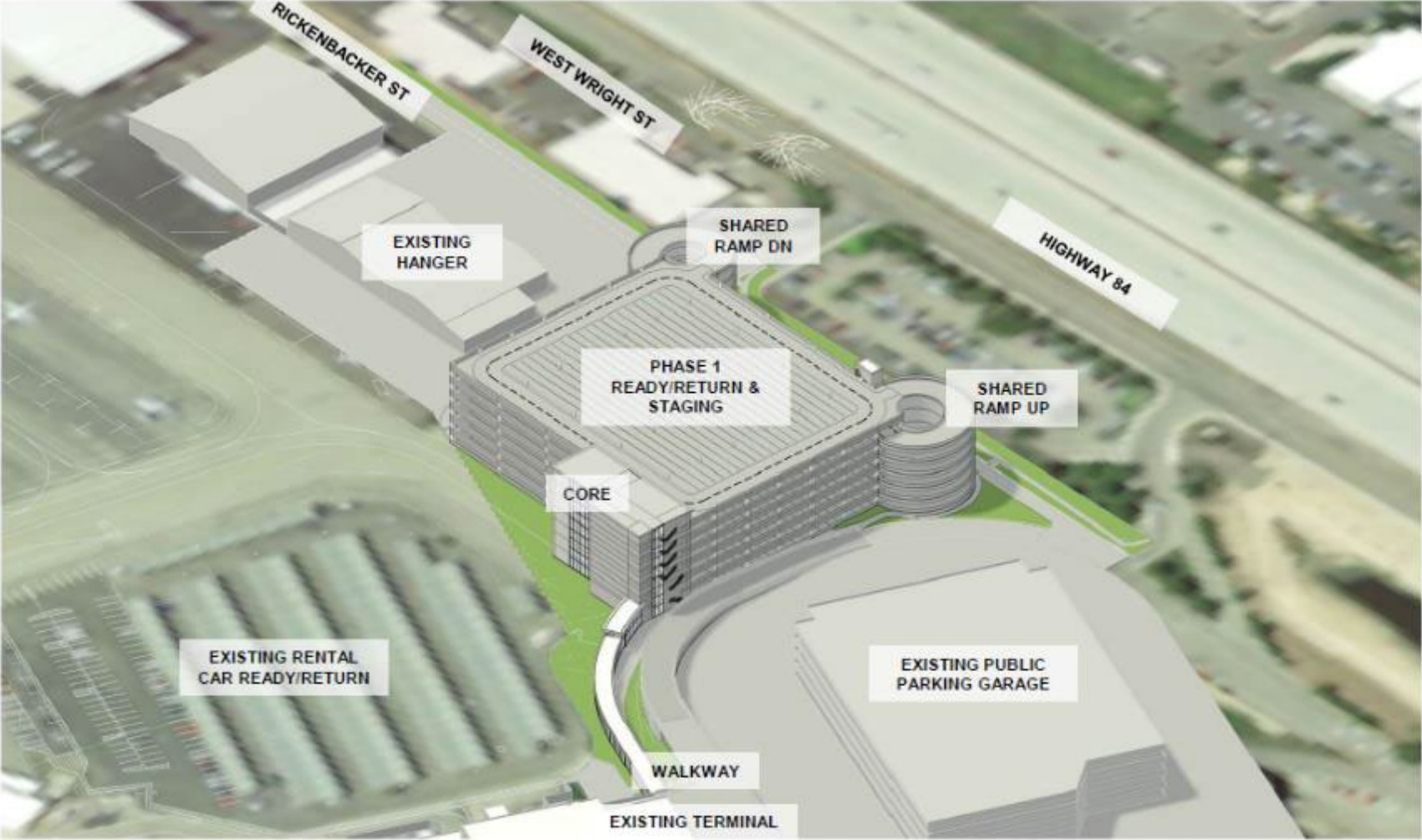


# CONRAC Design Charette

Aerial view  
from northwest  
phase 1



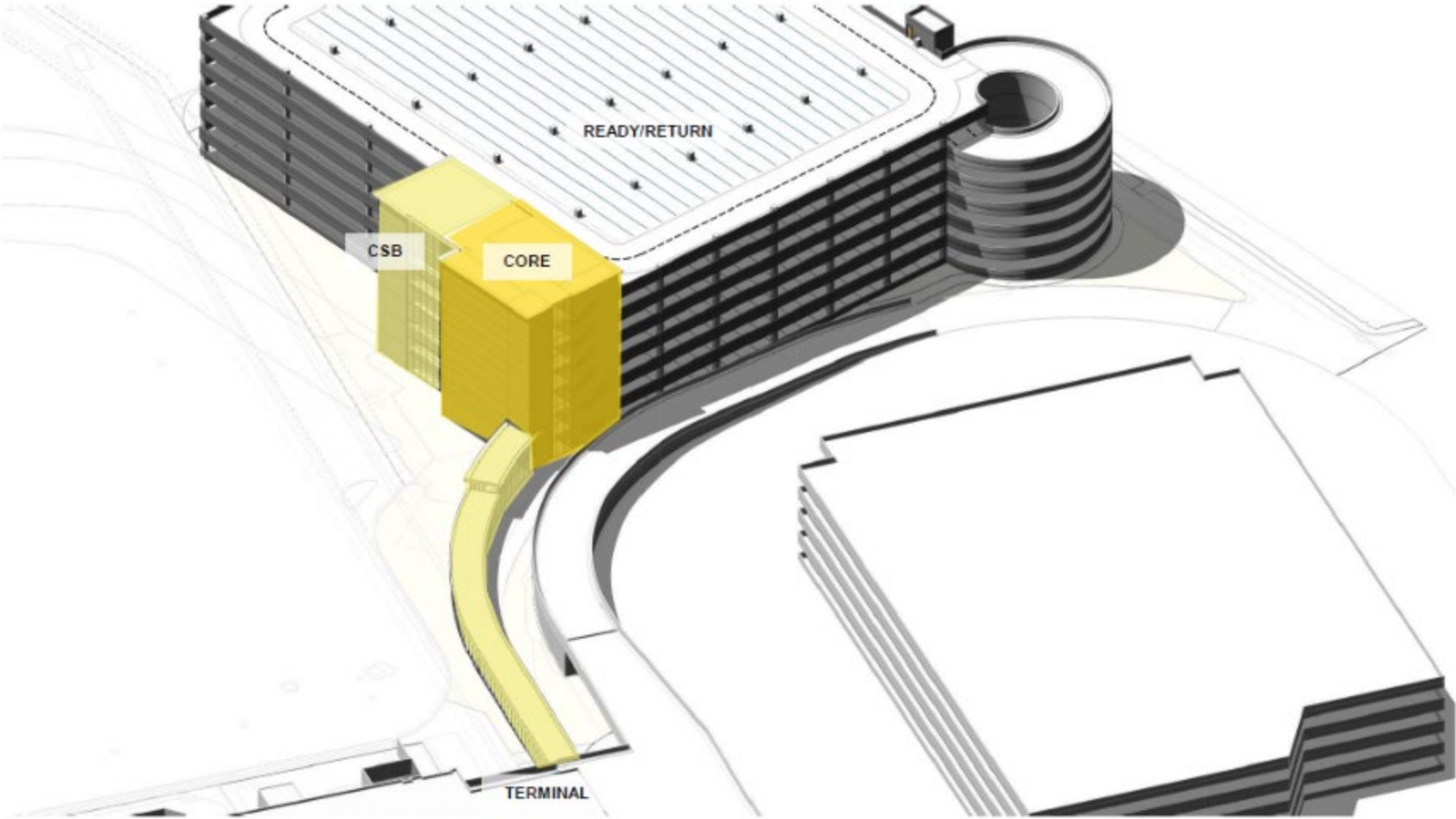
# CONRAC Design Charette



Aerial view from southeast phase 1



# CONRAC Design Charette



**De-Centralized  
CSB – aerial  
overview**

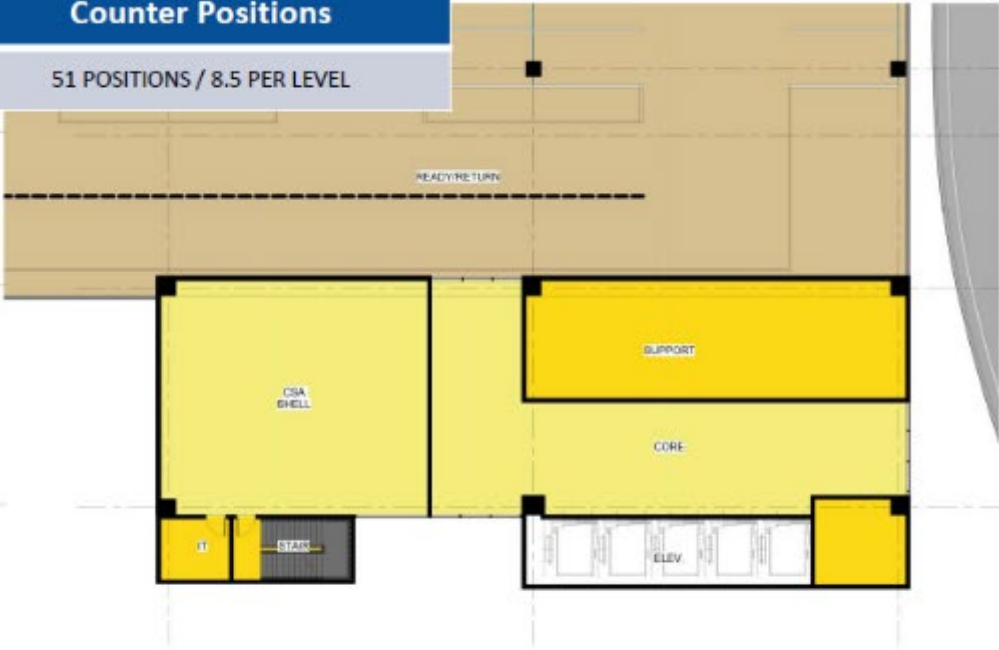
# CONRAC Design Charette

Customer Service Area	Counter Positions
19,000 SF +/- 3,167 SF PER LEVEL	51 POSITIONS / 8.5 PER LEVEL

Floor plans



LEVEL 1



TYPICAL LEVEL

# Avelo Airlines Announces BOI route

- Avelo Airlines announced it will add nonstop service to Burbank, California
  - Route was announced with service 2x week—now increased to 4x week
  - Service begins May 2022
- Alaska Airlines has also announced it will begin 4x weekly service to Burbank in May



# Spirit Airlines to Join BOI

- Spirit Airlines announced it will add daily service to Las Vegas, Nevada
  - Service begins August 2022
- With the addition of Spirit and Avelo Airlines, the Boise Airport is now served by nine airlines and offers 27 nonstop destinations



# Spring Break Travel

- The Boise Airport saw strong passenger travel for the week of spring break
  - Anecdotally, there may have been nearly 16,000 more passengers compared to spring break 2021
- The Economy Lot was able to accommodate all parking needs after temporarily relocating employees from that lot—freeing up nearly 700 spots for public use
  - Employees were relocated to other airport parking areas, as well as a rented lot on Elder St.



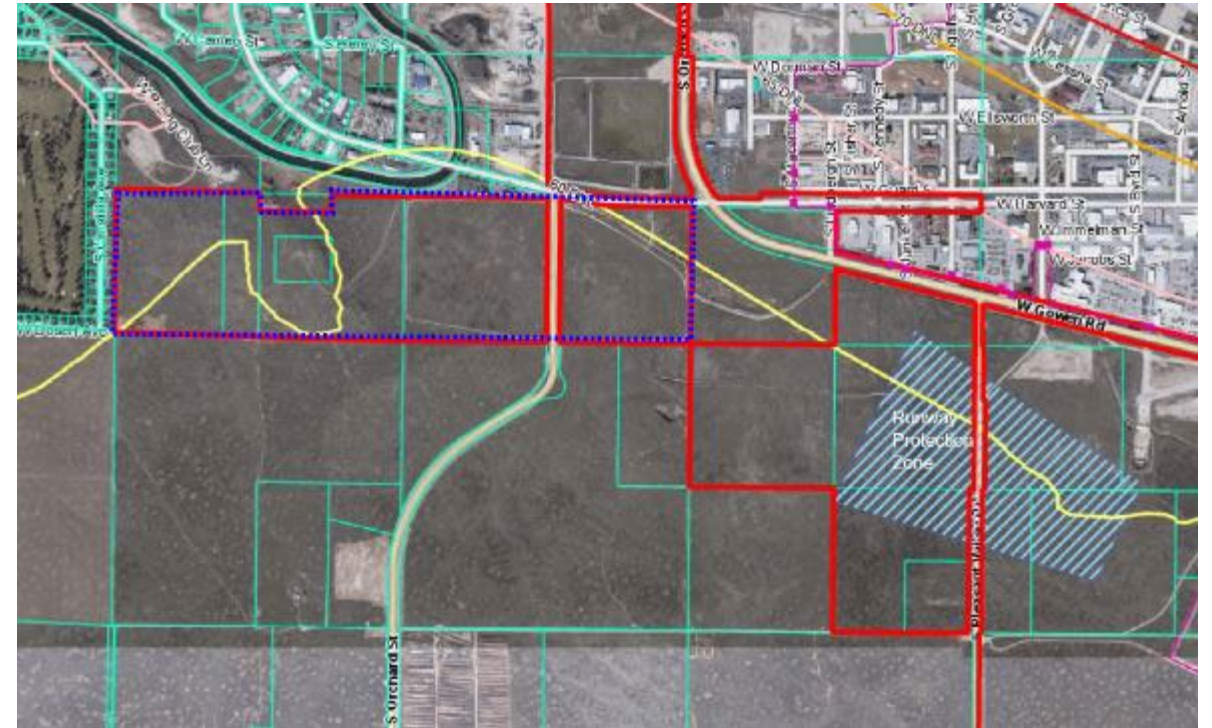
# Congressman Simpson Secures Funding for BOI

- Simpson helped secure \$700,000 in federal funding to rehabilitate taxi-lane D, which needs to be removed and replaced
- The funding is designated to rehabilitate the main taxi route of the terminal for air carrier operations that supports air transportation to the community
- Construction is scheduled to start in July 2022 and be completed in one month



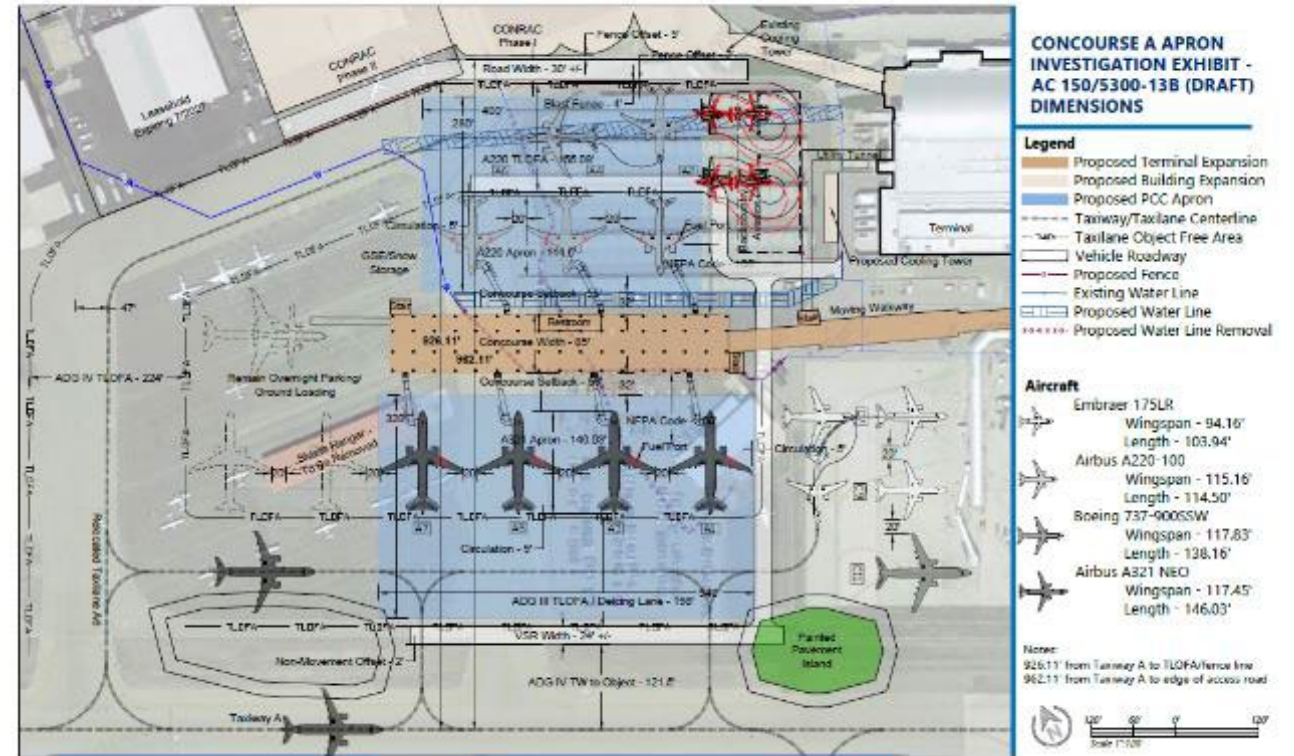
# Non-Aeronautical Development Rezone Update

- The Boise Airport is seeking a rezone of six parcels totaling 153.05 acres from A-1/A-2 to M1-D for future light industrial development
- The Planning and Zoning Commission recommended the rezone of the A-1 parcels only
- City Council is scheduled to review the rezone application May 17



# Preparing for Concourse A

- In order to prepare for the construction of Concourse A, our backcountry operators will be temporarily relocated in the spring of 2023
- Due to construction, backcountry operators will not have parking at the gate from 2023-2025 (or until construction is completed)
- The Boise Airport is working with operators to help them identify their modified plan for operations during this timeframe





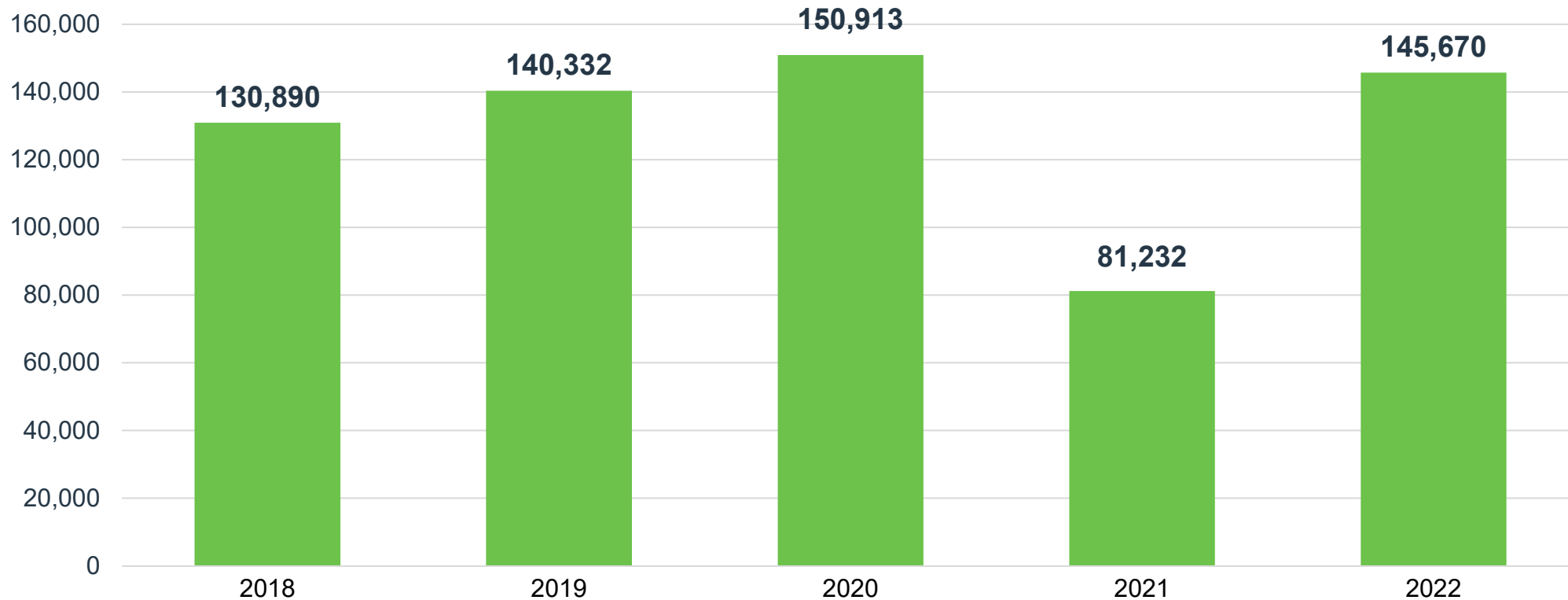
# 2022 Spirit of Hospitality Winner

- Rebecca Hupp has been selected as this year's **Spirit of Hospitality** winner as part of the Recognition of Service Excellence Awards (ROSE) Awards
- The event honoring the hospitality community will take place on Monday, April 18 at the Boise Centre at 6:00pm



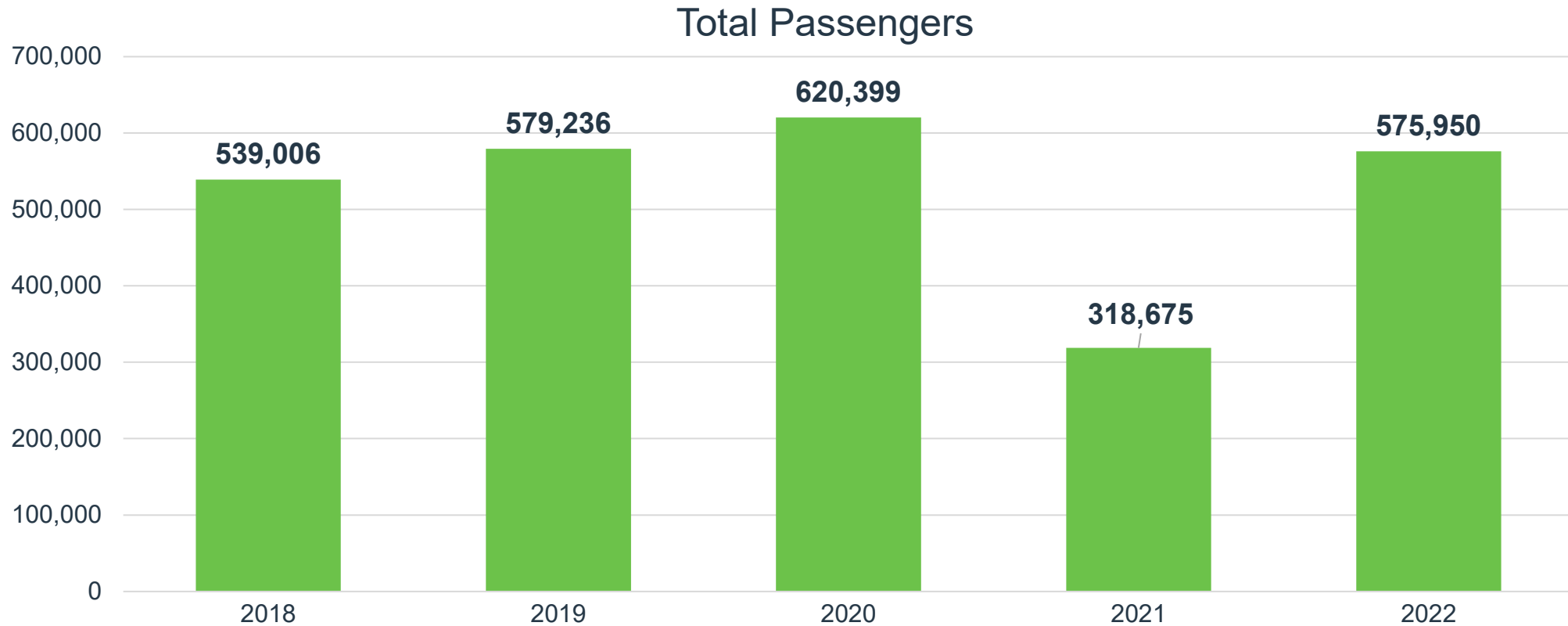
# February Enplanements

*Down 3% from pre-pandemic February 2020 | Up 4% from February 2019*



# 2022 Total Passengers (through February)

*Up 81% over 2021 | Down just 7% from pre-pandemic 2020 | Down 1% from 2019*



<b>Top 10 Operating Revenue Description</b>	<b>FY 2022</b>	<b>FY 2021</b>	<b>\$ Change</b>	<b>% Change</b>
Parking Lot	\$ 5,794,021	\$ 2,431,808	\$ 3,362,213	138%
Rental Car Concession	\$ 2,153,282	\$ 1,179,923	\$ 973,359	82%
Industrial Land Rent	\$ 1,615,009	\$ 1,702,852	\$ (87,843)	-5%
Terminal Rent - Airlines	\$ 1,536,565	\$ 1,277,470	\$ 259,095	20%
Signatory Airline Landing Fees	\$ 964,895	\$ 1,008,471	\$ (43,576)	-4%
Terminal Concessions – Retail	\$ 501,766	\$ 217,495	\$ 284,271	131%
Terminal Concessions – Food/Beverage	\$ 403,521	\$ 177,419	\$ 226,102	127%
Landings/Freight	\$ 391,386	\$ 318,396	\$ 72,990	23%
Terminal Rent – Non-Airlines	\$ 271,940	\$ 246,882	\$ 25,058	10%
Employee Parking Permits	\$ 262,075	\$ 202,201	\$ 59,874	30%
<b>Total Top 10 Operating Revenue</b>	<b>\$ 13,894,461</b>	<b>\$ 8,762,917</b>	<b>\$ 5,131,544</b>	<b>--</b>
Other Operating Revenue	\$ 1,431,602	\$ 1,043,769	\$ 387,833	37%
<b>Total Operating Revenue</b>	<b>\$ 15,326,063</b>	<b>\$ 9,806,686</b>	<b>\$ 5,519,377</b>	<b>56%</b>

<b>Top 10 Operating Expenses Description</b>	<b>FY 2022</b>	<b>FY 2021</b>	<b>\$ Change</b>	<b>% Change</b>
Personnel	\$ 4,380,503	\$ 3,896,028	\$ 484,475	12%
Indirect Cost Reimbursement	\$ 1,579,788	\$ 803,251	\$ 776,537	97%
Policing Services	\$ 1,378,424	\$ 1,295,461	\$ 82,963	6%
Fire Services	\$ 1,305,015	\$ 1,225,866	\$ 79,149	6%
Parking Management	\$ 713,185	\$ 377,000	\$ 336,185	89%
Chemicals	\$ 451,774	\$ 215,732	\$ 236,042	109%
Power	\$ 337,476	\$ 307,173	\$ 30,303	10%
R/M – Fleet Management	\$ 208,567	\$ 94,530	\$ 114,037	121%
R/M – Structural/Electrical/Plumbing	\$ 175,592	\$ 380,725	\$ (205,133)	-54%
Credit Card Fees	\$ 130,051	\$ 58,986	\$ 71,065	120%
<b>Total Top 10 Operating Expenses</b>	<b>\$ 10,660,374</b>	<b>\$ 8,654,752</b>	<b>--</b>	<b>--</b>
Other Operating Expense	\$ 1,627,575	\$ 1,449,631	\$ 177,944	12%
<b>Total Operating Expense</b>	<b>\$ 12,287,949</b>	<b>\$ 10,104,383</b>	<b>\$ 2,183,566</b>	<b>22%</b>



# Boise Airport

[www.iflyboise.com](http://www.iflyboise.com)