



June Commission Report

Director's Update

Given by Rebecca Hupp, Airport Director
Boise Airport

JUNE 1, 2022

May Runway Closures

RWY 10R/28L:

- 5/2: Closed 9:00am – 10:00am, Routine Maintenance
- 5/9: Closed 8:00am – 12:00pm, Routine Maintenance
- 5/10: Closed 7:30pm – 8:15pm, NAVAID Equipment Maintenance
- 5/11: Closed 1:25pm – 3:00pm, NAVAID Equipment Maintenance
- 5/23: Closed 9:00am – 10:00am, Routine Maintenance

RWY 10L/28R:

- 5/2: Closed 10:38pm – Midnight, Vehicle accident at drive gate 18
- 5/8: Closed 9:00am – 10:00am, Routine Maintenance
- 5/16: Closed 7:00am – 4:00pm, Routine Maintenance
- 5/23: Closed 8:00am – 9:00am, Routine Maintenance



Parking Garage Construction Updates

East Public Garage

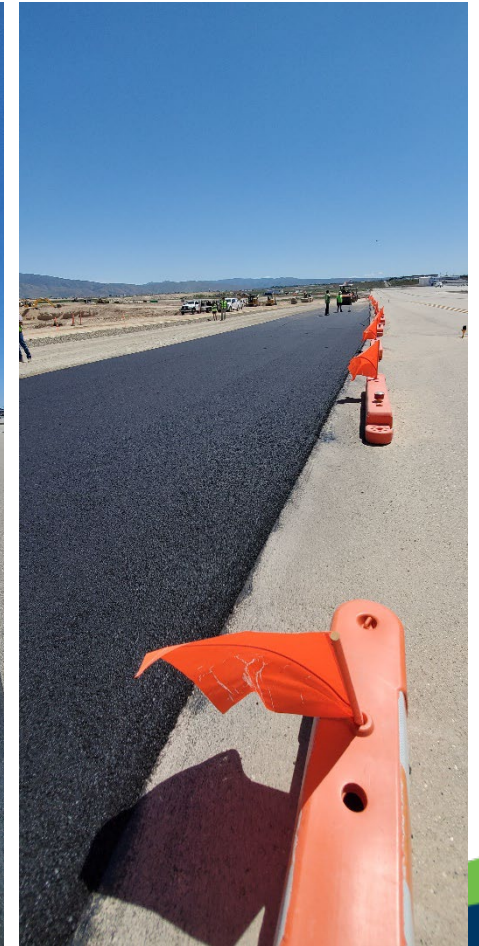
- Site grading in progress for phase one paving
- Exit plaza concrete poured
- Parking garage transformer installation in progress
- Construction of footings and columns in progress. Forms for concrete walls are being erected



Taxilane Sierra

Taxilane S Widening and New Cargo Apron

- QA/QC asphalt test strip placed
- Finalizing stormwater pond grading and hauling remaining embankment material for the new cargo apron
- Stormwater pipe placed for the new cargo apron



West Cargo VALE eGSE

West Cargo Voluntary Airport Low Emissions Ground Support Equipment

- Infrastructure install is complete
- Power and commissioning of the GPUs will be finalized in June



Memorial Day Travel

BOI Kicked Off the Official Start to Summer Travel Last Weekend

- Operations went smoothly over Memorial Day weekend
- Ample parking was available to accommodate passenger travel
- The airport received media coverage across all major broadcast and print publications regarding summer travel, construction and parking limitations



2022 Economic Impact Award

- Director Hupp was presented the 2022 Economic Impact Award on May 24th from Leadership Boise
- This award is presented to an individual whose contribution and leadership is a catalyst for job creation, smart growth/development, or economic improvement in the Boise Valley



Avelo Inaugural Flight to Burbank, CA



- We welcomed Avelo to BOI on 5/24 with an event to honor their inaugural flight
- Avelo's initial service is 2x weekly (Monday/Friday), expanding to 4x weekly in June
- Alaska also began nonstop service to Burbank, CA on Friday, May 27

Well-deserved Promotions on Ops Team

DUTY MANAGERS



Colton Enmark



Evan Brannan

OPERATIONS SUPERVISORS



Jodi Spencer



Hannah Hoke

TSA Recognizes Exceptional Partners

Three BOI team members from Facilities Maintenance were acknowledged for their furtherance of TSA goals and mission.



Kathy Martinez



Emmanuel Bampendi



Andrej Velic

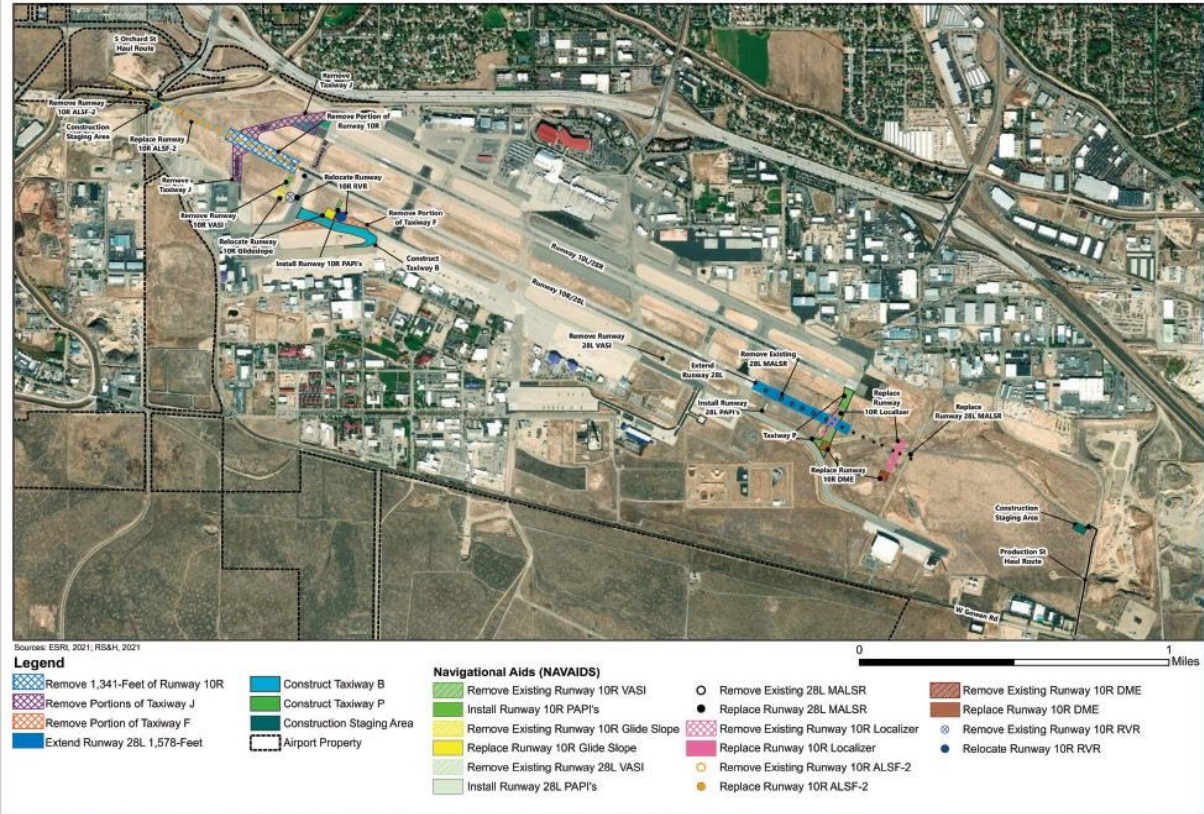
BOI TSA Twitter Compliment



10R Environmental Assessment

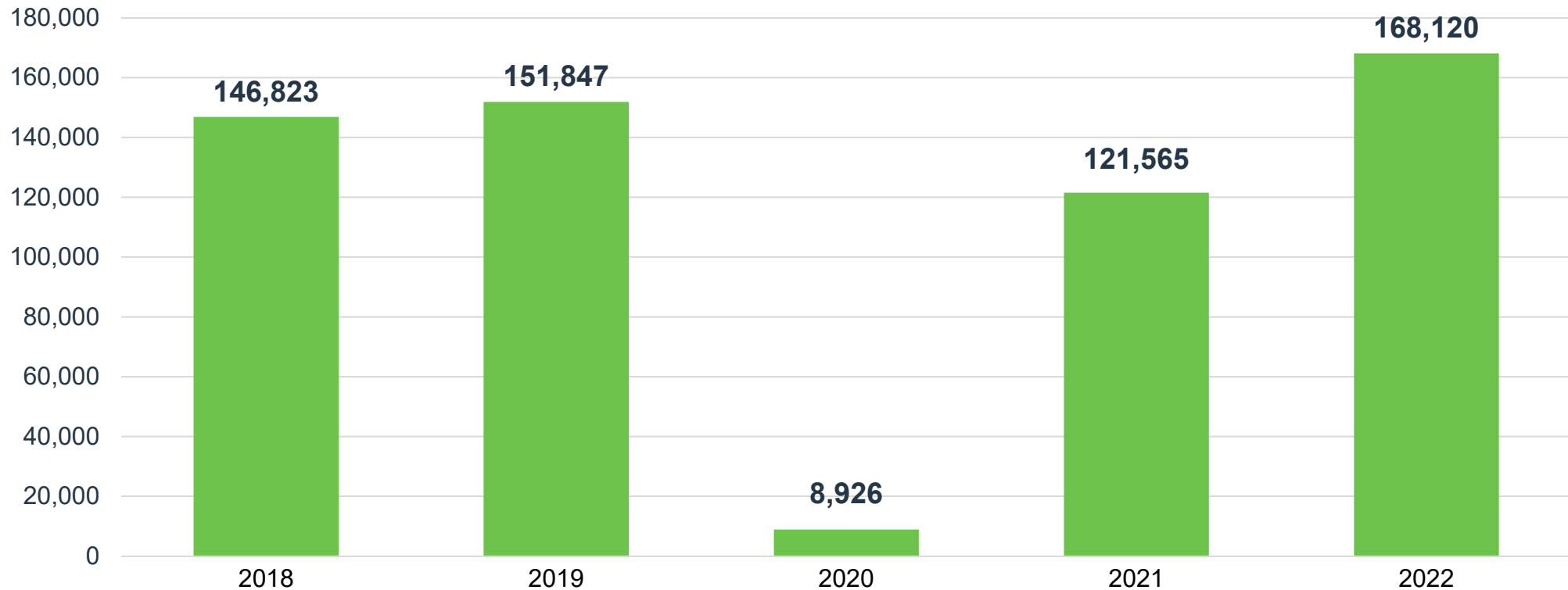
BOI will be seeking public input regarding a Runway Incursion Mitigation plan

- Agency scoping meeting to be held the afternoon of June 7th
- Public scoping open house to be held June 7th from 5-7 p.m. at the Best Western Vista Inn
- Public will learn about the proposed runway safety improvement project and provide input to direct the study



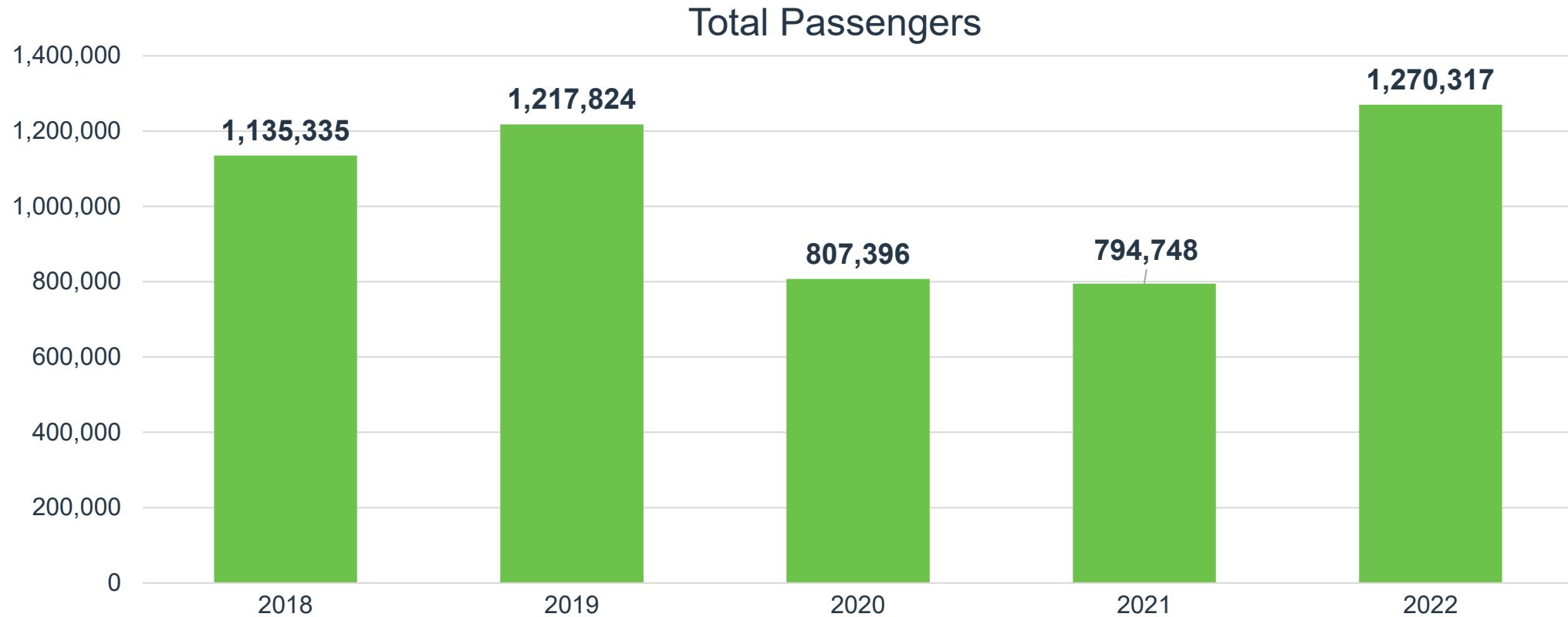
April Enplanements

Up 10% from April 2019 | Up 59% from April 2021



2022 Total Passengers (through April)

Up 4% over 2019 | Up 60% over 2021



Top 10 Operating Revenue Description	FY 2022	FY 2021	\$ Change	% Change
Parking Lot	\$ 8,265,500	\$ 4,047,648	\$ 4,217,852	104%
Rental Car Concession	\$ 3,147,099	\$ 1,749,637	\$ 1,397,462	80%
Industrial Land Rent	\$ 2,290,443	\$ 2,365,382	\$ (74,939)	-3%
Terminal Rent - Airlines	\$ 2,132,808	\$ 1,810,452	\$ 322,356	18%
Signatory Airline Landing Fees	\$ 1,477,716	\$ 1,380,123	\$ 97,593	7%
Terminal Concessions – Retail	\$ 685,997	\$ 379,210	\$ 306,787	81%
Terminal Concessions – Food/Beverage	\$ 598,682	\$ 286,134	\$ 312,548	109%
Landings/Freight	\$ 540,805	\$ 446,118	\$ 94,687	21%
Terminal Rent – Non-Airlines	\$ 367,500	\$ 361,898	\$ 5,602	2%
Employee Parking Permits	\$ 343,425	\$ 271,226	\$ 72,199	27%
Total Top 10 Operating Revenue	\$ 19,849,975	\$ 13,097,828	\$ 6,752,147	--
Other Operating Revenue	\$ 1,976,078	\$ 1,577,765	\$ 398,313	25%
Total Operating Revenue	\$ 21,826,053	\$ 14,675,593	\$ 7,150,460	49%

Top 10 Operating Expenses Description	FY 2022	FY 2021	\$ Change	% Change
Personnel	\$ 6,120,449	\$ 5,438,133	\$ 682,316	13%
Indirect Cost Reimbursement	\$ 2,203,459	\$ 1,067,628	\$ 1,135,831	106%
Policing Services	\$ 1,929,794	\$ 1,813,646	\$ 116,148	6%
Fire Services	\$ 1,827,022	\$ 1,716,213	\$ 110,809	6%
Parking Management	\$ 1,035,066	\$ 788,220	\$ 246,846	31%
Chemicals	\$ 451,875	\$ 386,611	\$ 65,264	17%
Power	\$ 401,210	\$ 442,318	\$ (41,108)	-9%
R/M – Fleet Management	\$ 295,935	\$ 165,677	\$ 130,258	79%
R/M – Structural/Electrical/Plumbing	\$ 275,202	\$ 570,831	\$ (295,629)	-52%
Engineering Services	\$ 200,536	\$ 79,334	\$ 121,202	153%
Total Top 10 Operating Expenses	\$ 14,740,547	\$ 12,468,611	--	--
Other Operating Expense	\$ 2,554,726	\$ 2,261,874	\$ 292,852	13%
Total Operating Expense	\$ 17,295,273	\$ 14,730,485	\$ 2,564,788	17%



Boise Airport

www.iflyboise.com