



# August Commission Report

## *Director's Update*

Given by Rebecca Hupp, Airport Director  
Boise Airport

AUGUST 3, 2022

# Runway Closures

**JUNE** (In Addition to Routine Maintenance)

- **RWY 10L/28R:**

- 6/7 – 6/21: Closed for Runway Repainting

**JULY**

- **RWY 10R/28L:**

- 7/11: 9:00am – 10:00am, Routine Maintenance
- 7/18: 10:00am – 11:00am, Routine Maintenance
- 7/24 – 8/7: Closed for Runway Repainting

- **RWY 10L/28R:**

- 7/11: 8:00am – 9:00am, Routine Maintenance
- 7/18: 9:00am – 10:00am, Routine Maintenance
- 7/19: 9:00am – 10:00am, Airfield Lighting





# Parking Garage Construction Updates

## East Public Garage

- VIMs membrane is being installed.
- Existing parking garage has been painted

## Parking Garage Office and Exit Plaza:

- Office finishing in progress
- Asphalt paving has been laid

## Employee Garage

- Monumental sign has been excavated and is ready to be relocated
- Construction of foundations in progress





# Pedestrian Bridge



- Pedestrian bridge was placed on June 22<sup>nd</sup>
- Pedestrian bridge has received concrete on metal deck and ceiling is being framed



# Taxilane Sierra

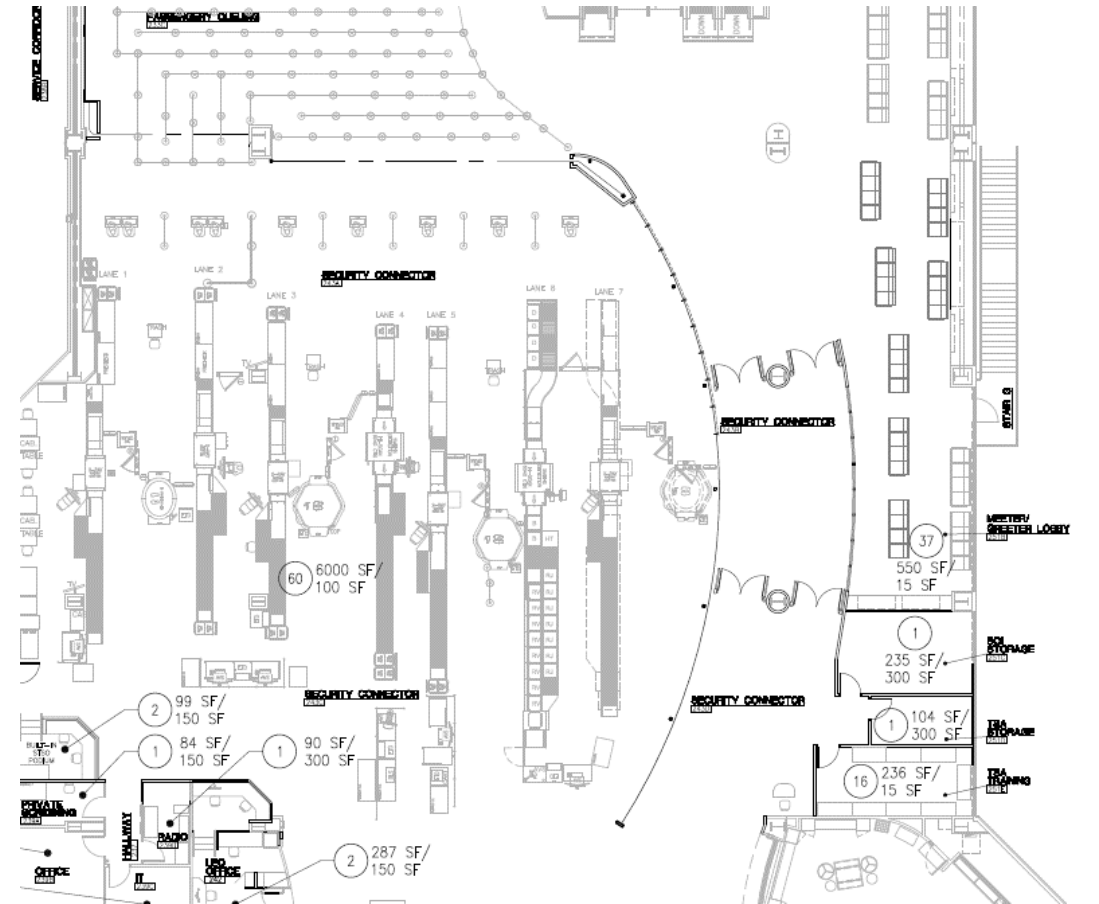
## Taxilane S Widening, New Cargo Apron and Amazon

- Asphalt Paving of Phase 2 for the Taxilane S portion in preparation to start Phase 3
- Preparing for PCC Concrete Paving of the Cargo Apron
- Amazon Cargo Facility is being constructed



# TSA Checkpoint Expansion

- TSA expansion project contract goes to Council for approval on 8/16. Project includes:
  - Remodeling the vacant gift shop to use for increased queuing capacity
  - Relocating wayfinding signage
  - Remodeling the Meet-and-Greet Lobby, reducing its size to accommodate a new passenger exit, including new security doors, and new rooms for TSA the BOI Airport Ops team
- Project is scheduled for 180 consecutive calendar days, pausing for the weeks of Thanksgiving and Christmas



# BOI Awarded Nearly \$1M in FAA Grants

- FAA approved funding requests for two sustainability upgrades at BOI:
  - Investing in an energy efficient electric boiler for terminal heating needs, as well as improvements to the boiler system
  - Updating skylights in the terminal to prevent heat gains and losses throughout the year
- Grants made possible through the newly established Airport Terminal Program (ATP)





# Spirit and JetBlue Merger Announced

**“Spirit and JetBlue will continue to advance our shared goal of disrupting the industry to bring down fares from the Big Four airlines.” - Robin Hayes, CEO, JetBlue**

- The acquisition will increase relevance for JetBlue in certain key focus cities (Fort Lauderdale, Orlando, San Juan, and Los Angeles) as well as Big Four airline hubs (Las Vegas, Dallas, Houston, Chicago, Detroit, Atlanta, and Miami)
- The close of the acquisition is subject to receipt of required regulatory approvals and approval of Spirit’s stockholders
  - Anticipating that will happen no later than the first half of 2024





# BOI Passed FAA Inspection

- The Boise Airport recently passed the FAA's annual inspection that ensures we are meeting the requirements of Part 139 Airport Certification
- Certification inspections include the following steps:
  - Pre-inspection review
  - In-briefing with airport management
  - Administrative inspection of airport files, paperwork
  - Movement area inspection
  - Aircraft rescue and fire fighting inspection
  - Fueling facilities inspection
  - Night inspection
  - Post inspection briefing with airport management



# Curbside Valet Parking Launched 7/1

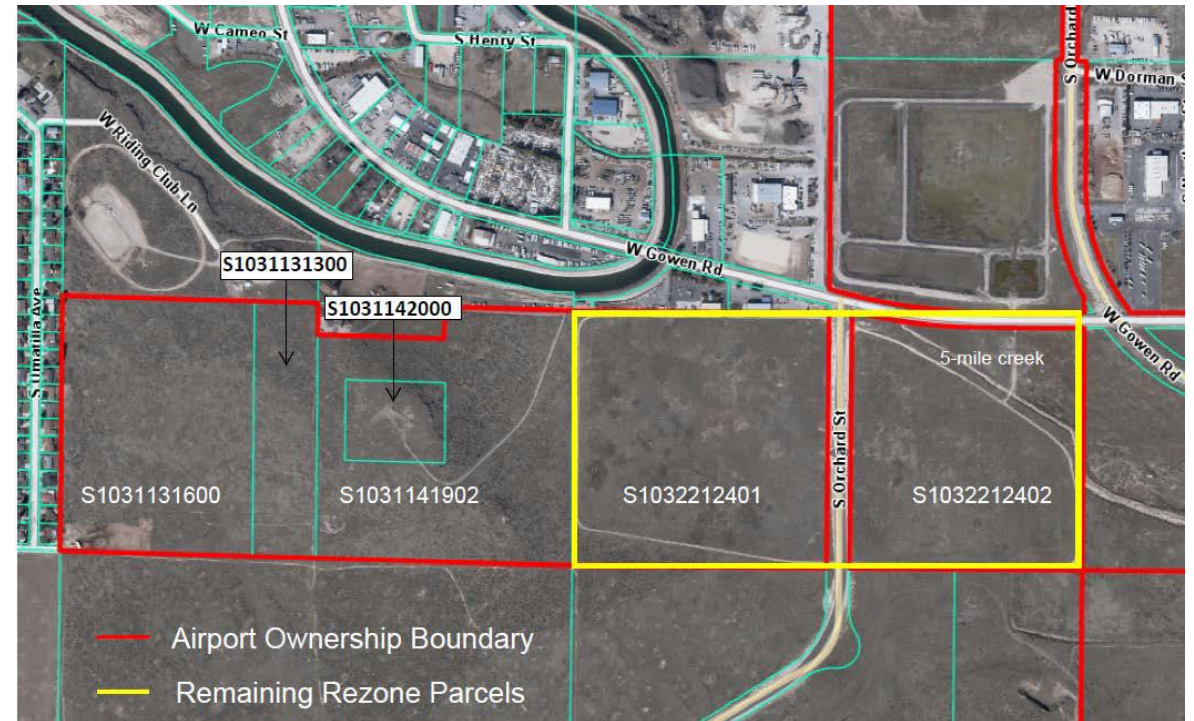
- Valet parking offered by local company, The Car Park, at \$21/day
- Open daily from 4 a.m. to 1 a.m., or later, if necessary to accommodate incoming flights
- Service is off to a very strong start, with the valet lot averaging 77% occupancy thus far
- Reservation system to launch this fall





# Non-Aeronautical Development Rezone Update

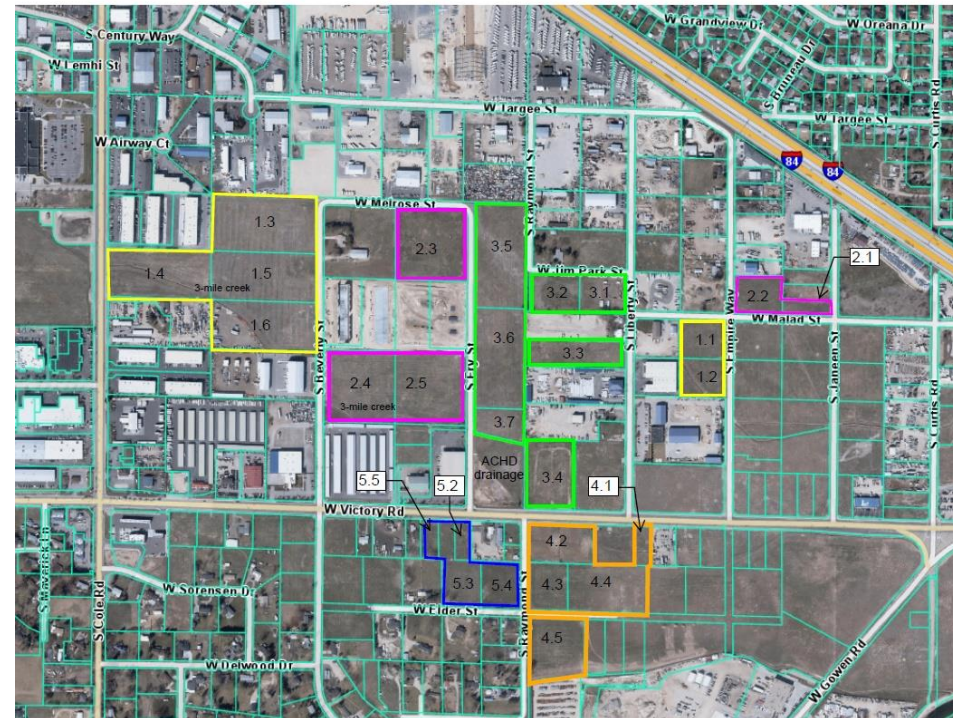
- Four parcels were withdrawn from the rezone request, which is scheduled for public hearing at City Council on 8/16
- Only the A-1 parcels (approx. 75 acres) remain in the request. These parcels were recommended for rezone by the Planning and Zoning Commission
- A-2 parcels were removed to more fully assess their viability for future development



# Master Developer Agreement

## MDA entered with Boise Airport Industrial Holdings, LLC (Adler)

- MDA was awarded as a result of a Request for Expressions of Interest
- MDA term is 5-year, requiring:
  - Minimum of 400,000 SF of building improvements to be constructed per 5-year term, up to a total of 20 years
- Developer will provide a Notice to Lease land for individual areas in accordance with their master plan





# Airfield Lease Updates



**Jackson Jet Center** acquired buildings and improvements from BHI (FireHawk) and was assigned the land lease.

Will sublease the improvements back to FireHawk with the intent to eventually add a hangar on the site



**Micron Technology** is leasing approx. 3.5 acres to construct a 39,000+ SF hangar at the end of Taxi-lane S (south side of the airfield)

# 2022 Triennial Emergency Exercise

- The FAA requires a disaster-preparedness exercise to be conducted every three years
- The drill refines the response, collaboration and interoperability of local emergency personnel and Boise Airport staff in the event of an aircraft accident
- This year's exercise is scheduled for Thursday, August 18th





# Air Service Update

- Alaska's inaugural flights to Idaho Falls and Las Vegas departed on June 16<sup>th</sup>
- Sean Briggs attended the JumpStart Air Service Development Conference (June 13-15) and met with: American, aha!, Delta, Alaska, Breeze, JetBlue, Sun Country, Volaris, WestJet and Southwest
- aha! Airlines announced nonstop service to Reno, NV shortly after the conference on 6/30
  - Inaugural flight for this new route starts 8/31



# Parking Garage Pricing Adjusts 10/1

*City Council approved new parking garage fees for FY 2023:*

Location	FY 2022	FY 2023
Economy Lot	\$8.00/day	\$10.00/day
Long Term Garage	\$13.00/day	\$14.00/day
Long Term Surface	\$10.00/day	\$13.00/day
Short Term Garage	\$23.00/day \$2.00/hour	\$24.00/day \$2.00/hour



# Congrats! Internal Promotions at BOI

*Promoted to  
Operations Specialist II:*



**Michael Rudd**



**Daniel Beauclair**

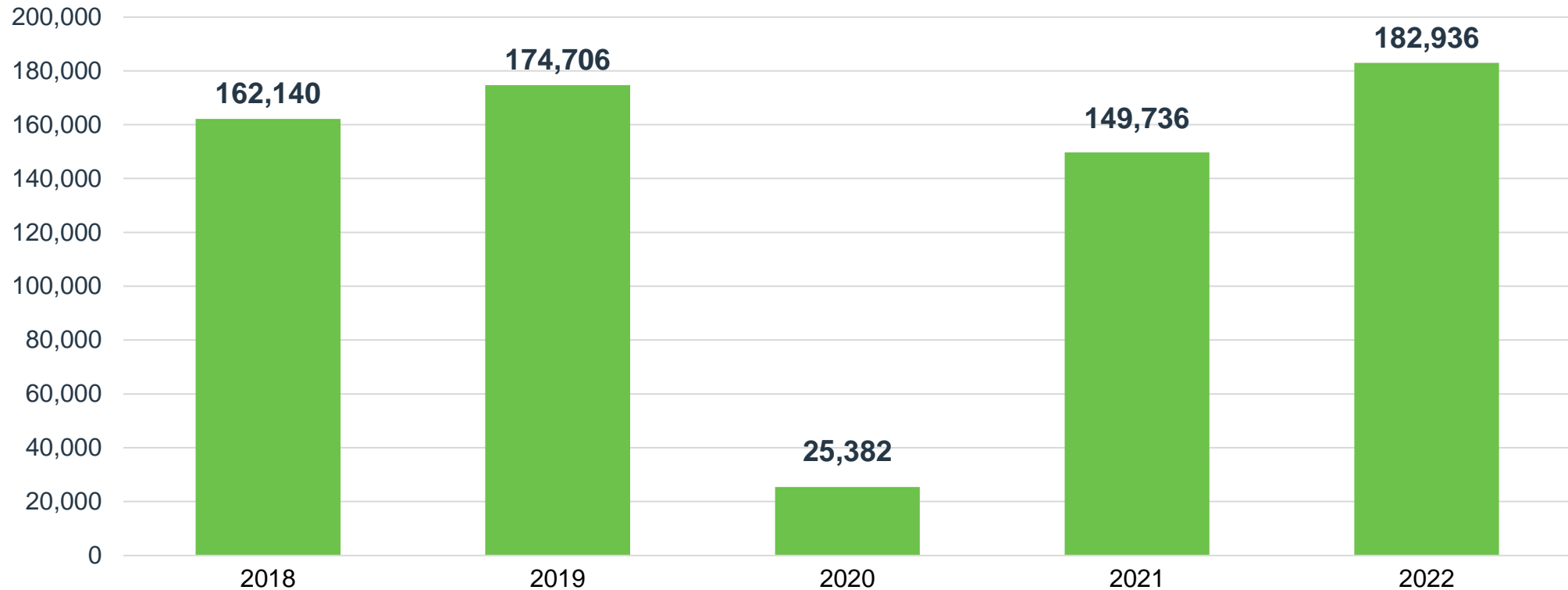
*Promoted to Airport Security  
Manager after a nationwide  
search:*



**Jodi Spencer**

# May Enplanements

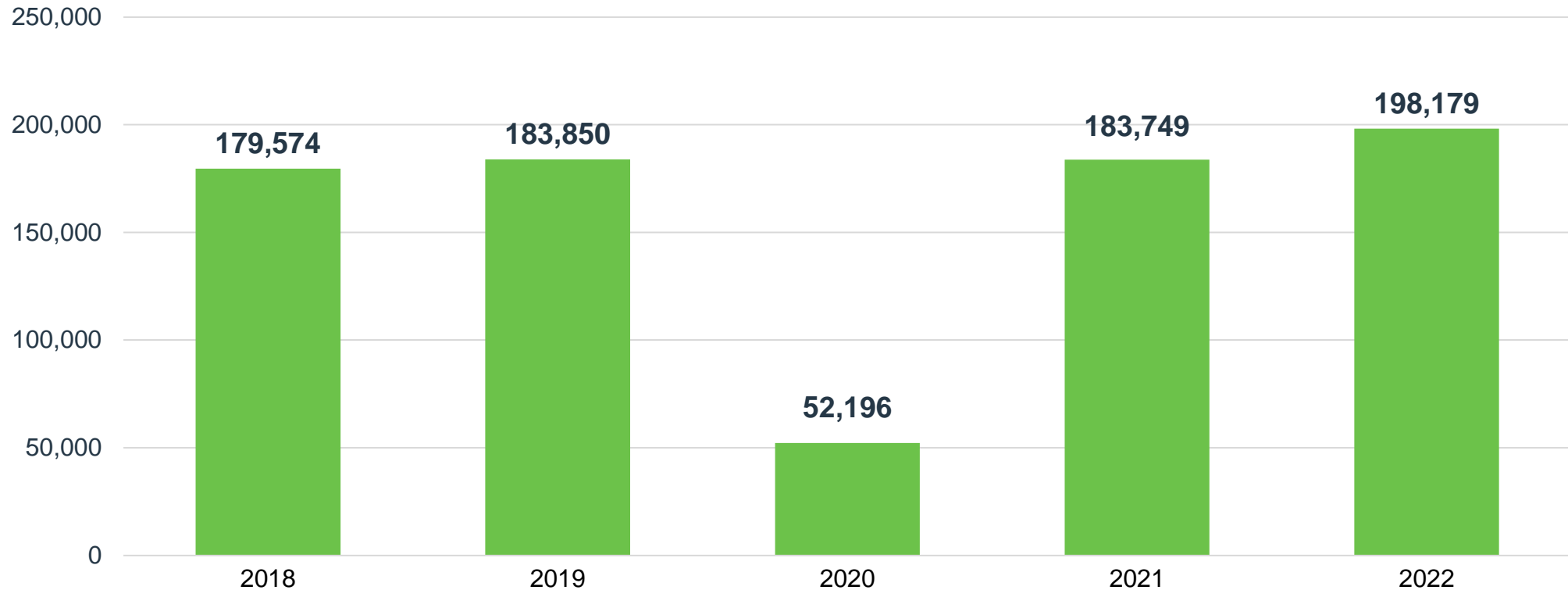
*Up 4% from May 2019 | Up 49% from May 2021*





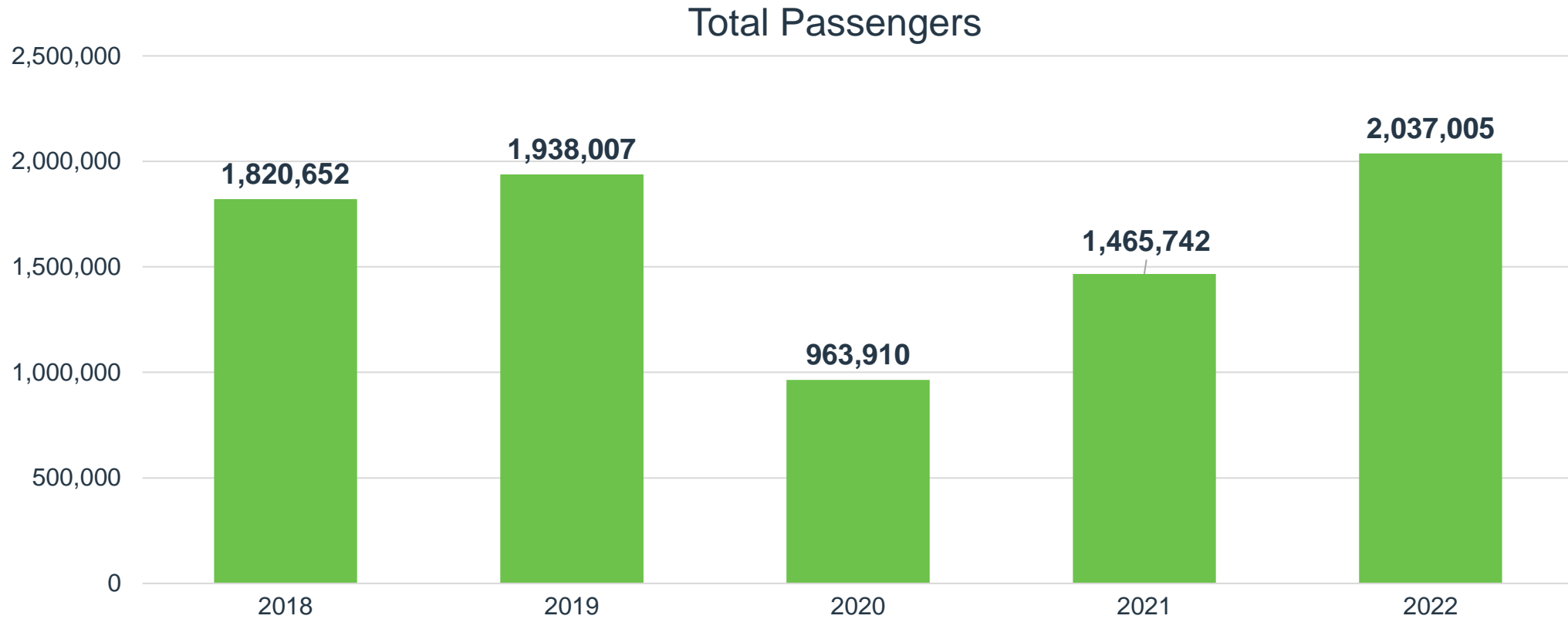
# June Enplanements

*Up 8% from June 2019 | Up 39% from June 2021*



# 2022 Total Passengers (through June)

*Up 5% over 2019 | Up 39% over 2021*

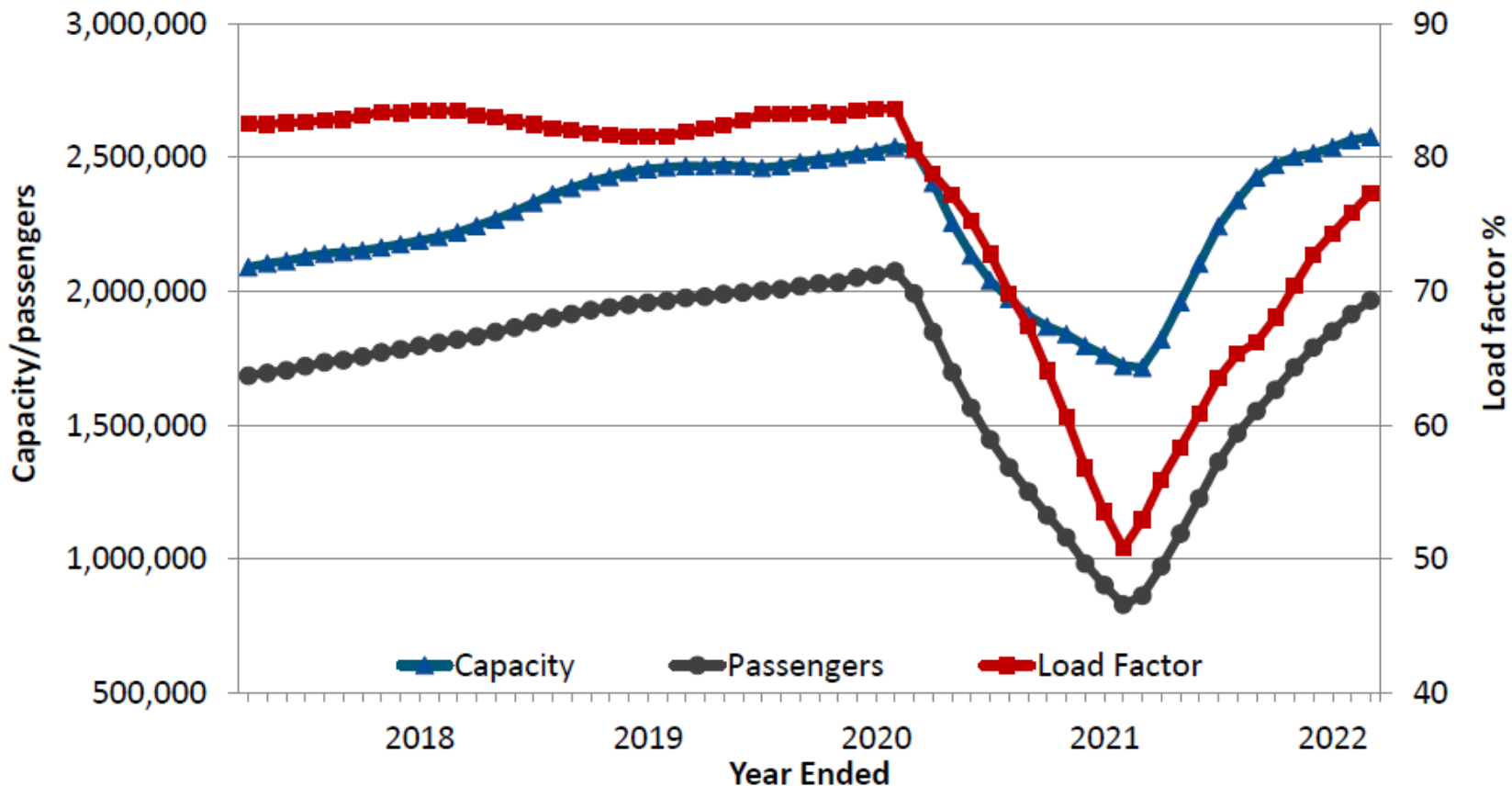




<b>Top 10 Operating Revenue Description</b>	<b>FY 2022</b>	<b>FY 2021</b>	<b>\$ Change</b>	<b>% Change</b>
Parking Lot	\$ 10,899,907	\$ 6,142,381	\$ 4,757,526	77%
Rental Car Concession	\$ 4,000,642	\$ 2,935,173	\$ 1,065,469	36%
Industrial Land Rent	\$ 2,964,295	\$ 3,033,967	\$ (69,672)	-2%
Terminal Rent - Airlines	\$ 2,745,579	\$ 2,317,909	\$ 427,670	18%
Signatory Airline Landing Fees	\$ 2,051,840	\$ 1,857,018	\$ 194,822	10%
Terminal Concessions – Food/Beverage	\$ 824,540	\$ 489,563	\$ 334,977	68%
Terminal Concessions – Retail	\$ 694,832	\$ 596,209	\$ 98,623	17%
Landings/Freight	\$ 687,158	\$ 578,237	\$ 108,921	19%
Advertising	\$ 427,211	\$ 390,484	\$ 36,727	9%
Employee Parking Permits	\$ 424,025	\$ 348,176	\$ 75,849	22%
<b>Total Top 10 Operating Revenue</b>	<b>\$ 25,720,029</b>	<b>\$ 18,689,117</b>	<b>\$ 7,030,912</b>	<b>--</b>
Other Operating Revenue	\$ 2,591,560	\$ 2,150,290	\$ 441,270	21%
<b>Total Operating Revenue</b>	<b>\$ 28,311,589</b>	<b>\$ 20,839,407</b>	<b>\$ 7,472,182</b>	<b>36%</b>

<b>Top 10 Operating Expenses Description</b>	<b>FY 2022</b>	<b>FY 2021</b>	<b>\$ Change</b>	<b>% Change</b>
Personnel	\$ 7,776,212	\$ 6,934,191	\$ 842,021	12%
Indirect Cost Reimbursement	\$ 2,799,808	\$ 1,319,162	\$ 1,480,646	112%
Policing Services	\$ 2,481,163	\$ 2,331,830	\$ 149,333	6%
Fire Services	\$ 2,349,028	\$ 2,206,559	\$ 142,469	6%
Parking Management	\$ 1,575,299	\$ 981,076	\$ 594,223	61%
Power	\$ 586,789	\$ 562,801	\$ 23,988	4%
R/M – Structural/Electrical/Plumbing	\$ 480,578	\$ 774,269	\$ (293,691)	-38%
Chemicals	\$ 451,875	\$ 386,611	\$ 65,264	17%
R/M – Fleet Management	\$ 400,652	\$ 244,078	\$ 156,574	64%
Engineering Services	\$ 257,022	\$ 96,540	\$ 160,482	166%
<b>Total Top 10 Operating Expenses</b>	<b>\$ 19,158,426</b>	<b>\$ 15,837,117</b>	<b>--</b>	<b>--</b>
Other Operating Expense	\$ 3,595,277	\$ 2,956,256	\$ 639,021	22%
<b>Total Operating Expense</b>	<b>\$ 22,753,703</b>	<b>\$ 18,793,373</b>	<b>\$ 3,960,330</b>	<b>21%</b>

# Boise Traffic/Capacity Trends



YE March 2022 capacity was up 50% while passengers were up 128%, leading to a 24% point increase in the average load factor (77%).



# Top Origination/Destination Markets

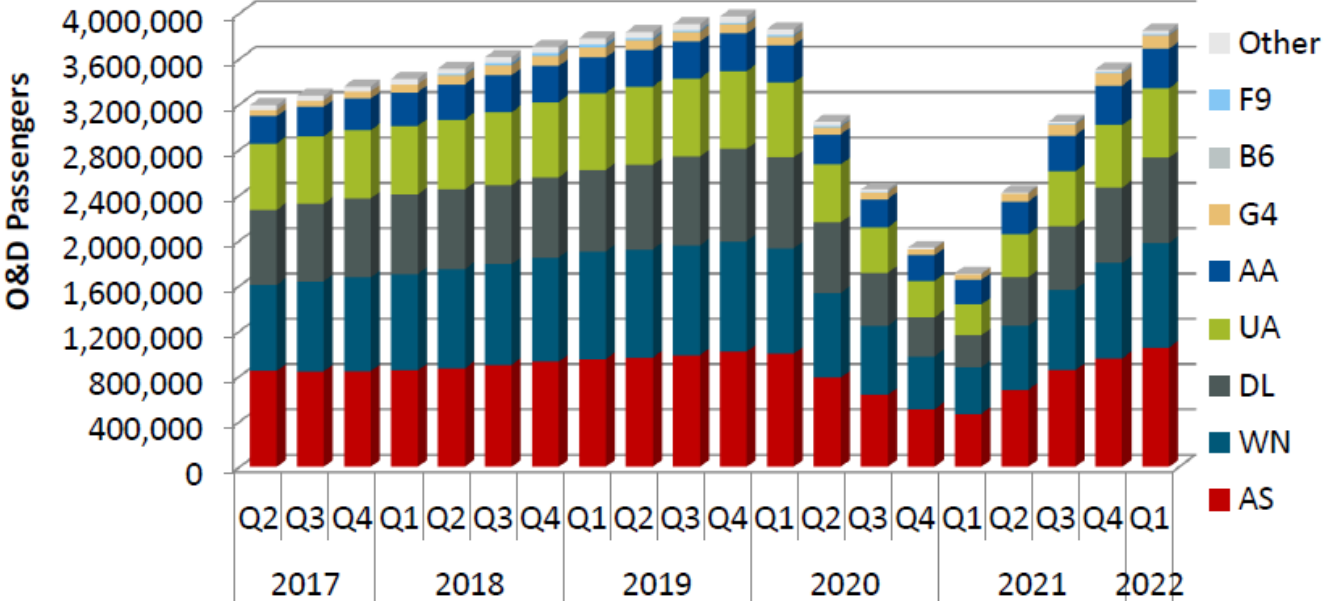
Rank	Destination	O&D Pax	O&D Revenue	Average Fare (\$)	Yield (c)	% Change Since Q1 2021			
						Pax	Rev	Fare	Yield
1	Seattle, WA	71,800	7,304,892	102	25	39	89	36	36
2	Phoenix, AZ (PHX)	54,896	7,392,783	135	18	51	109	38	38
3	Los Angeles, CA	48,829	6,613,600	135	20	39	128	64	64
4	Las Vegas, NV	43,041	5,082,673	118	23	54	120	42	42
5	Portland, OR	34,192	4,502,840	132	38	89	109	11	11
6	Denver, CO	32,738	4,380,290	134	21	95	120	13	13
7	San Diego, CA	30,554	4,376,519	143	19	75	144	39	39
8	Sacramento, CA	26,525	2,849,841	107	25	52	103	33	33
9	Orange County, CA	25,673	2,760,452	108	16	165	287	46	46
10	Spokane, WA	22,142	2,517,292	114	40	53	52	(0)	(0)
11	San Francisco, CA	21,636	2,847,871	132	25	115	133	8	8
12	Oakland, CA	19,575	1,976,386	101	20	24	60	29	29
13	Salt Lake City, UT	17,702	3,308,982	187	64	94	111	9	9
14	Orlando, FL (MCO)	17,290	4,087,956	236	11	16	110	82	82
15	Dallas, TX (DFW)	14,981	3,772,221	252	20	45	116	49	49
16	San Jose, CA	14,710	1,711,994	116	22	133	143	4	4
17	Chicago, IL (ORD)	12,652	2,603,269	206	14	118	162	21	21
18	Cancun, Mexico	11,643	2,786,057	239	10	43	98	38	38
19	Honolulu, HI	10,769	2,490,369	231	8	86	104	10	10
20	Minneapolis, MN	9,968	1,956,182	196	17	76	125	28	28
<b>Total/Average</b>		<b>884,375</b>	<b>154,742,146</b>	<b>175</b>	<b>16</b>	<b>63</b>	<b>126</b>	<b>38</b>	<b>33</b>

Each of the top 20 markets saw a **2x or 3x digit percentage increase** in passengers, quarter over quarter.

# Boise Airline Market Share

Delta gained 1% of share in the latest year-ended period.

American Airlines lost 1% of share.



Year	Quarter	Airline Market Share								
		AS	WN	DL	UA	AA	G4	B6	F9	Other
2020	Q2	26%	25%	20%	17%	9%	2%	0%	0%	1%
	Q3	26%	25%	19%	17%	10%	2%	0%	0%	1%
	Q4	26%	24%	18%	16%	12%	3%	0%	0%	1%
2021	Q1	27%	24%	17%	16%	13%	3%	0%	0%	0%
	Q2	28%	23%	18%	16%	12%	3%	0%	0%	0%
	Q3	28%	24%	18%	16%	10%	3%	0%	0%	1%
	Q4	27%	24%	19%	16%	10%	3%	0%	0%	1%
2022	Q1	27%	24%	20%	16%	9%	3%	0%	0%	1%

# Boise Forward Looking Schedule

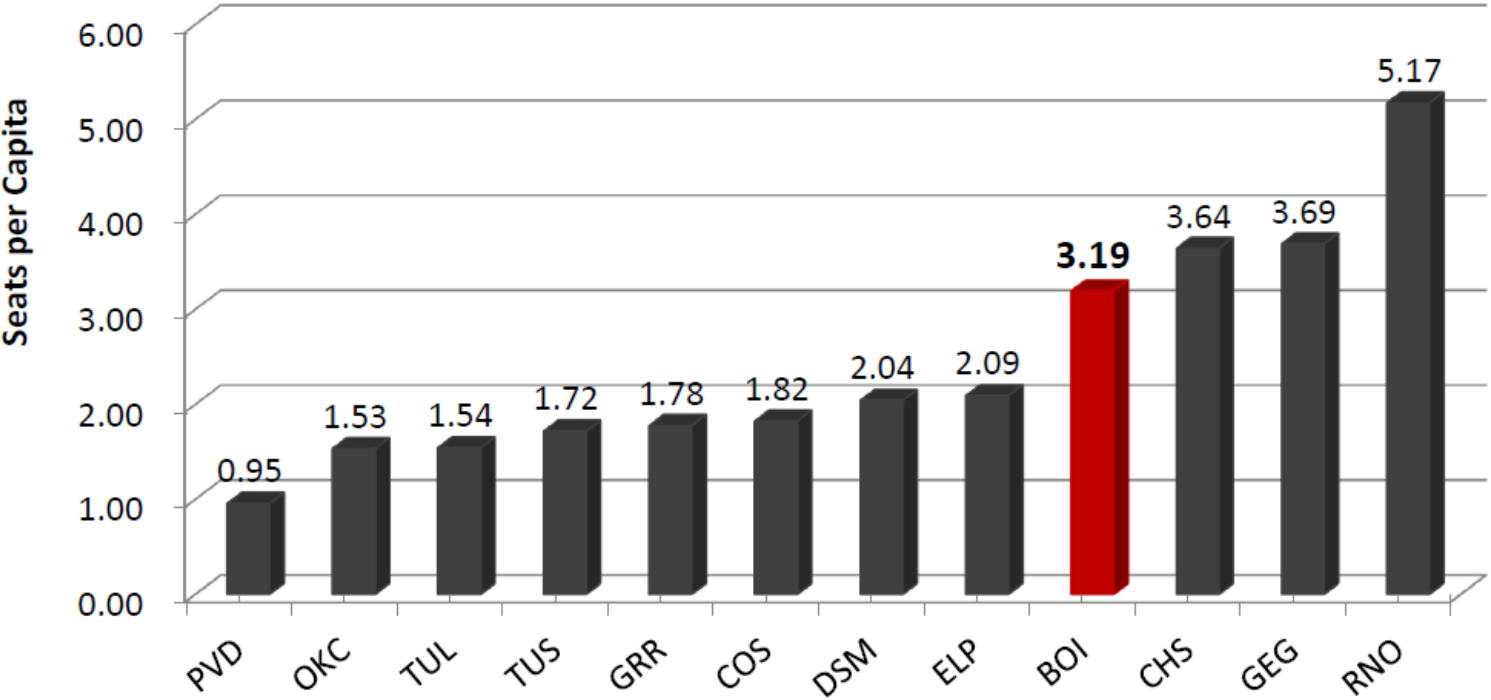
Over the next 6 months, **BOI's flights and seats are scheduled to increase by 6% and 10%, respectively, compared to the same months in 2021.**

Airline	Destination	Year-Over-Year Change %											
		Jul 2022		Aug 2022		Sep 2022		Oct 2022		Nov 2022		Dec 2022	
		Flts	Seats	Flts	Seats	Flts	Seats	Flts	Seats	Flts	Seats	Flts	Seats
	<b>Total</b>	(4%)	(7%)	(4%)	(4%)	5%	10%	7%	18%	12%	19%	27%	32%





# Seats Per Capita Comparison

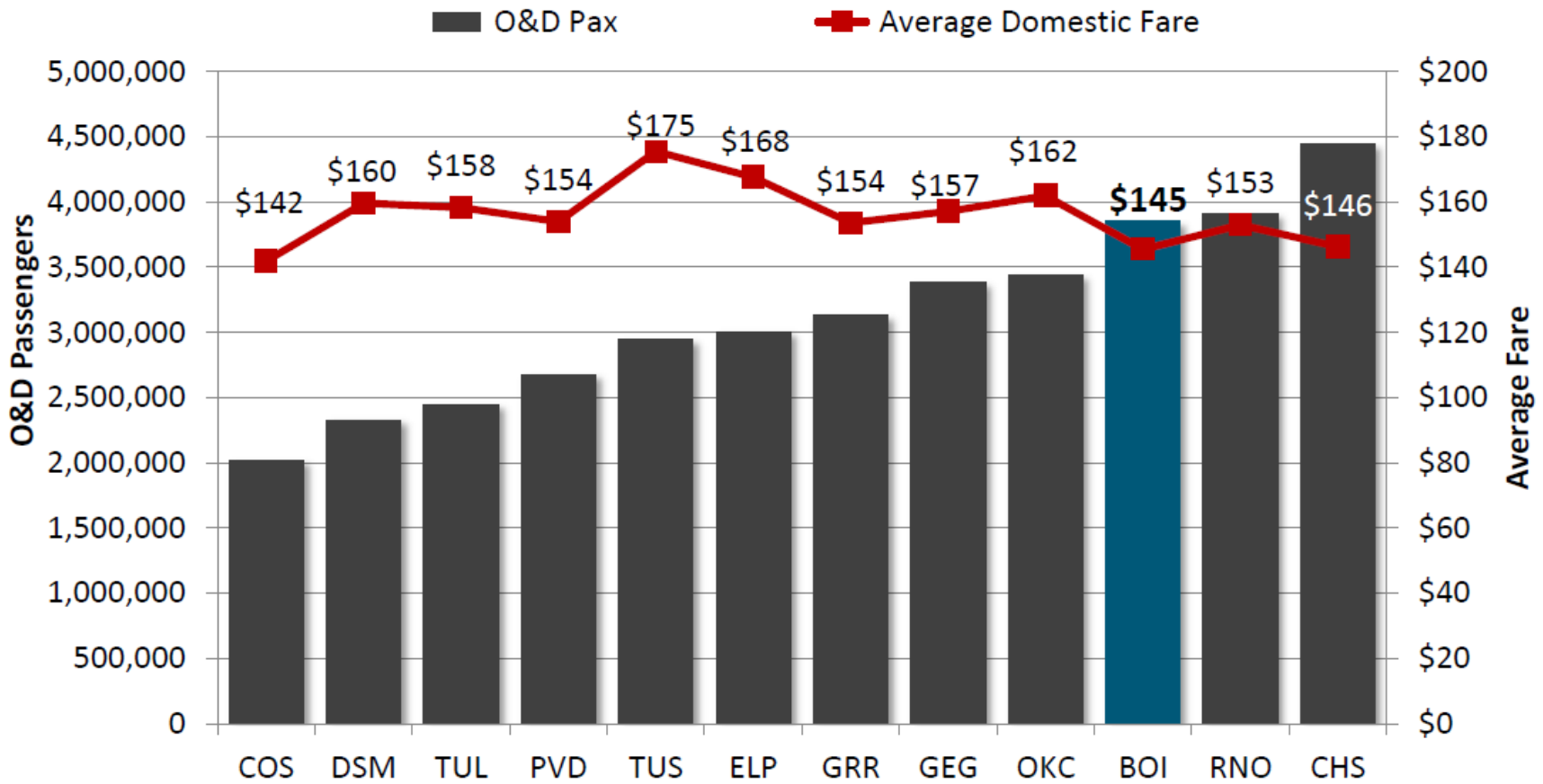


Average:  
2.13

Boise exceeds all comparison markets except Charleston, Spokane and Reno in seats per capita.

Boise increased from 3.18 to 3.19 from YE Q4 2021 to YE Q1 2022.

# Origination/Destination Passenger and Airfare Comparison



Boise ranked 3rd in terms of O&D passengers and had the 2nd lowest average domestic fare.

# Year-Over-Year Comparisons

Airport	2022 MSA Population	YE Q1 2022			YOY Change		
		# of Nonstop Destinations	O&D Pax	Seats	# of Nonstop Destinations	O&D Pax	Seats
Reno, NV	503,959	36	3,909,012	5,211,799	14	148%	77%
Spokane, WA	598,354	22	3,383,145	4,413,660	4	119%	35%
Des Moines, IA	725,916	30	2,326,993	2,963,077	6	136%	59%
Colorado Springs, CO	771,880	13	2,015,727	2,813,026	3	220%	170%
<b>Boise, ID</b>	<b>807,701</b>	<b>28</b>	<b>3,848,727</b>	<b>5,156,395</b>	<b>7</b>	<b>125%</b>	<b>50%</b>
Charleston, SC	824,403	47	4,447,070	6,004,208	15	192%	109%
El Paso, TX	879,754	18	3,002,416	3,679,681	2	154%	94%
Tulsa, OK	1,030,642	24	2,444,972	3,183,502	7	121%	50%
Tucson, AZ	1,061,835	20	2,942,579	3,643,608	0	143%	60%
Grand Rapids, MI	1,098,604	35	3,126,844	3,901,598	5	119%	55%
Oklahoma City, OK	1,454,965	26	3,438,308	4,459,966	2	123%	61%
Providence, RI	1,679,169	25	2,674,156	3,203,773	5	211%	87%

While growth has been significant, BOI had one of the lowest percentage increases in seats and passengers of the comparison markets.



The logo features a stylized graphic of three curved lines in shades of blue and green, resembling a wing or a leaf, positioned above the text.

# Boise Airport

[www.iflyboise.com](http://www.iflyboise.com)