



October Commission Report

Director's Update

Given by Rebecca Hupp, Airport Director
Boise Airport

OCTOBER 5, 2022

September Runway Closures

10R/28L

- 9/13: 6:30am – 10:30am, Routine Airfield and Lighting Maintenance
- 9/16: 6:00am – 9:00am, FAA Tech Ops Annual Maintenance
- 9/19: 6:00am – 9:00am, FAA Tech Ops Annual Maintenance

10L/28R

- 9/14: 6:30am – 10:30am, Routine Airfield and Lighting Maintenance



Public Parking Garage Construction

East Public Garage

- Construction continues vertically, with concrete placed on the second-floor deck
- Site for the future northwest surface lot continues to be graded and underground utilities are being installed
- Pedestrian bridge entrance has fascia installed



Employee Parking Garage Construction



- Underground utility work is ongoing
- Construction continues on the columns and retaining wall
- Vapor barrier on Stair/Elevator slab was installed

TSA Checkpoint Expansion

- Demolition in the previous gift shop is ongoing
- South automatic doors have been removed and the frame is relocated to the Meet & Greet Lobby
- Terrazzo install in process
- Fish art to be removed for secure storage on 10/6
- Phase 1B Temp Wall relocation scheduled for the night of October 11th



Taxilane Sierra

Taxilane S Widening, New Cargo Apron

- Completed paving along the south side of Taxilane S and installed edge lights
- Power connected from new Idaho Power transformer to the electrical panel
- Preparing for Pavement Markings on the Cargo Apron, Cargo Taxilane and Taxilane S



Amazon Cargo Facility (Non-Airport)

- Continued work on the interior of the facility and installed exterior doors
- Preparing to pave the parking lot, fire lane and west side cargo building



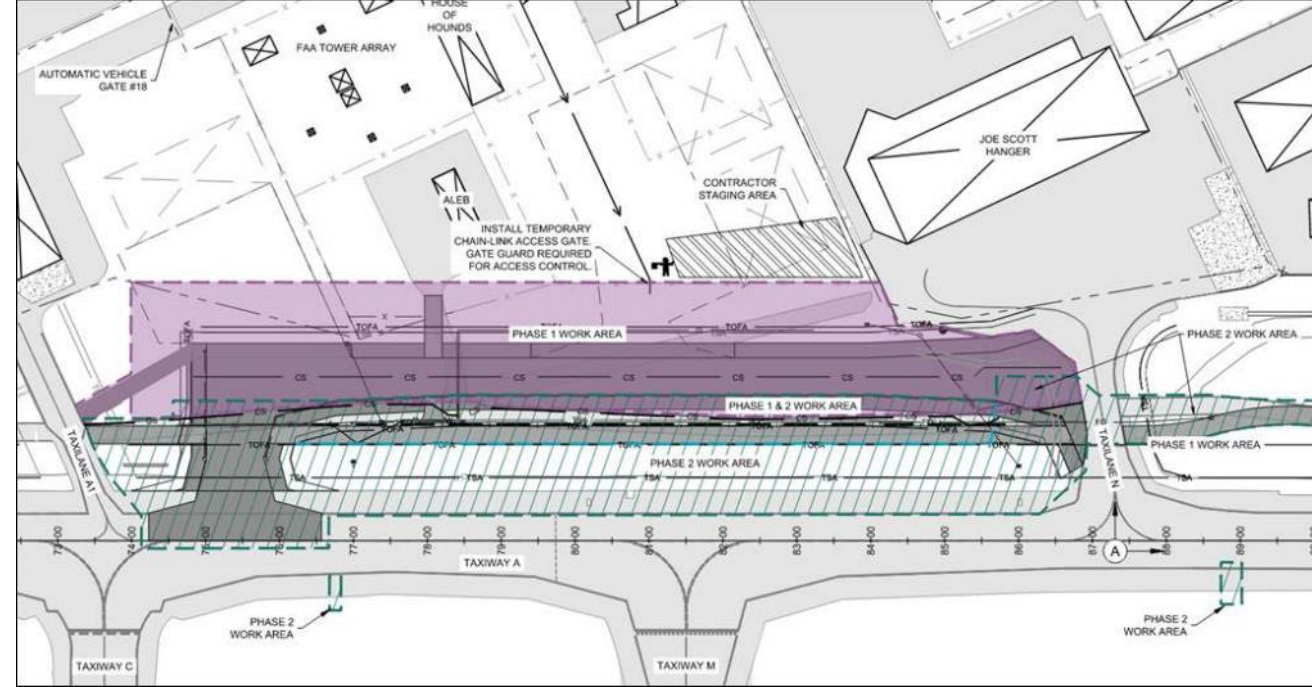
Gowen Rd Improvements – Cargo Facility Access Road

- Paved section of Gowen Road and the Cargo Access Roads
- Finishing grading beyond the curb and gutter
- Installing new perimeter fencing and gates
- Preparing to place pavement markings



Taxilane N and Taxilane S: Phase 2 Extension

- Construction began in September on Taxilane N. Current work is outside of all aircraft movement areas and the service road
- A 35-day closure of Taxiway Alpha between Taxilane A1 and existing Taxilane N to tie-in the extension is targeted for late October
 - The FAA's Safety Risk Management Panel has required a concurrent closure of Runway 10L-28R to improve safety and taxi movements



Alaska/Horizon Glycol Tank

- Installed new Glycol Tanks
- Currently completing equipment connections



Harvard Street Closure

- Closing Harvard St between Zeppelin St & Ed Stimpson Way (behind the ATCT)
 - Completed as part of a land lease amendment with the Guard
 - Constructing two, new cul-de-sacs to close public access to Harvard St
- Phase 1 – Zeppelin St cul-de-sac
 - Construction begins October 3rd
 - Complete by November 2nd
- Phase 2 – Ed Stimpson Way cul-de-sac
 - Construction to begin in Spring 2023
 - Includes new FAA ATCT gate/entrance
 - Relocation of Ed Stimpson’s Memorial Marker





North GA Asphalt Repairs

- Asphalt repairs and pavement markings were completed at Jackson Jet Center and the new City T-Hangers at the end of September

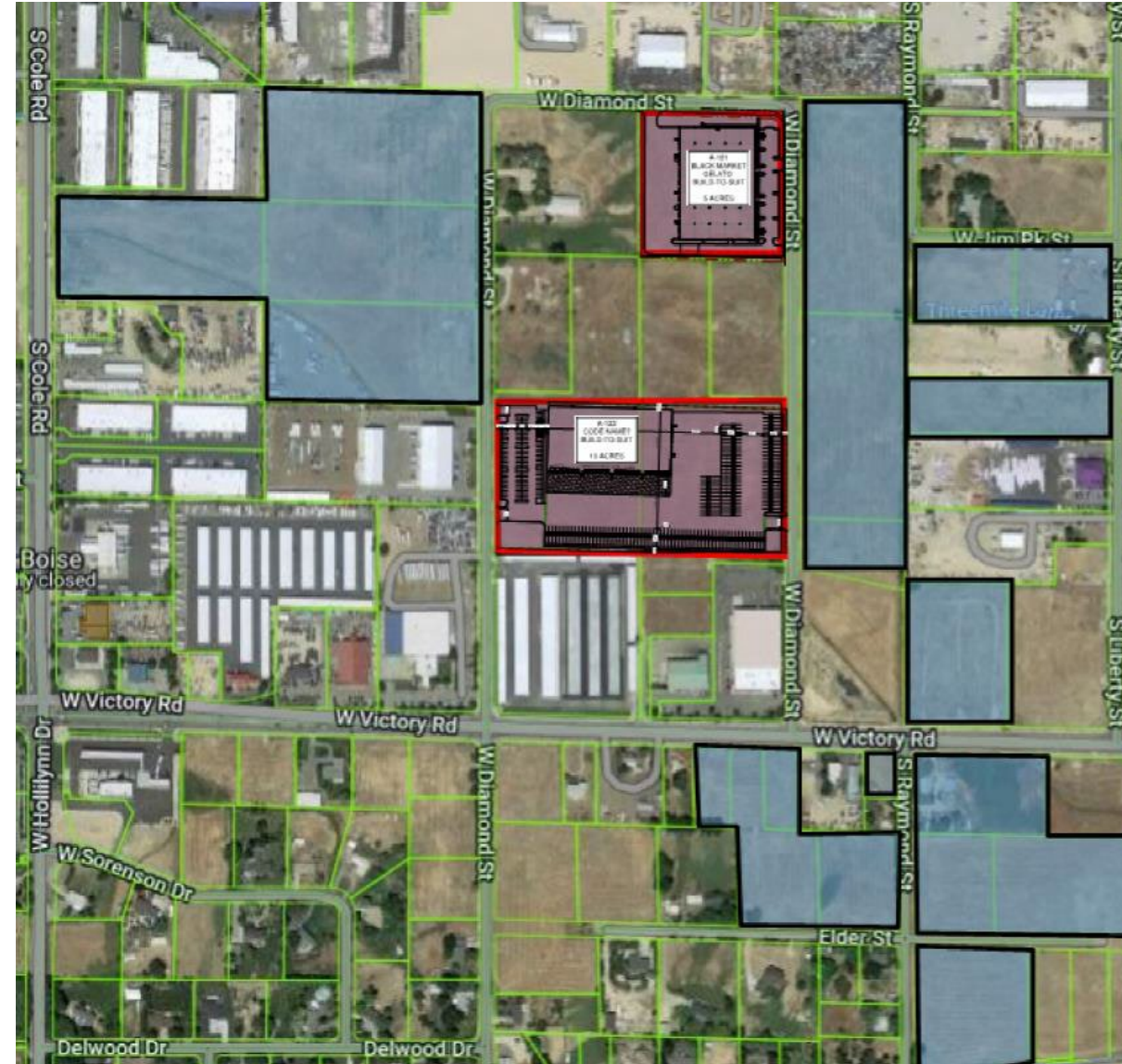
Economy Lot Expansion

- Adding 350 parking spaces in the NW quadrant of the economy parking lot
- Grading, subbase and seepage bed installation is finished
- Project expected to be completed and open to the public by mid-November



Non-Aeronautical Land Development Updates

- An amendment to the Master Developer Agreement with Boise Industrial Holdings (Adler) is anticipated to be approved by City Council on 10/4
 - This adds the recently rezoned Area 2 parcels on S. Orchard Street to the agreement
- Two leases with Boise Industrial Holdings (Adler) for construction of build-to-suit facilities will be scheduled for Council approval on October 11th:
 - Lease 1: ~5 acres, includes a 92,750 SF building
 - Lease 2: ~10 acres, includes an 84,000 SF building and large paved yard



Parking Update

- Our parking was busier than expected during the month of September
- Valet parking has been incredibly popular, with over 560 passengers using the service in August
- As we prepare for the upcoming holiday season, we will have contingency plans in place to accommodate a surge in parking demand, including the expanded Economy Lot





Airline Use and Lease Agreement

Renegotiating our lease agreement with airlines to better align with industry standards

- AULA Amendments are in place that extend our current rates until January 1, 2023
- Final consultations on Rates by Resolution in October. Resolution goes into effect January 1, 2023 if no agreement is reached
- Updated AULA agreement will go to airlines for signature in October and due back to the airport by December 1, 2022

Finalizing an Agreement with CLEAR

- The Boise Airport is finalizing an agreement to offer CLEAR as an additional amenity to passengers
- The agreement will go to City Council later this month
- Pending Council approval, we are working to offer CLEAR at the checkpoint this November



BOI Upgrade Open House



- Members of the American Institute of Architects, American Council of Engineering Companies and the Association of General Contractors attended an open house to learn more about BOI Upgrade projects
- Over 40 individuals representing 26 companies attended the event

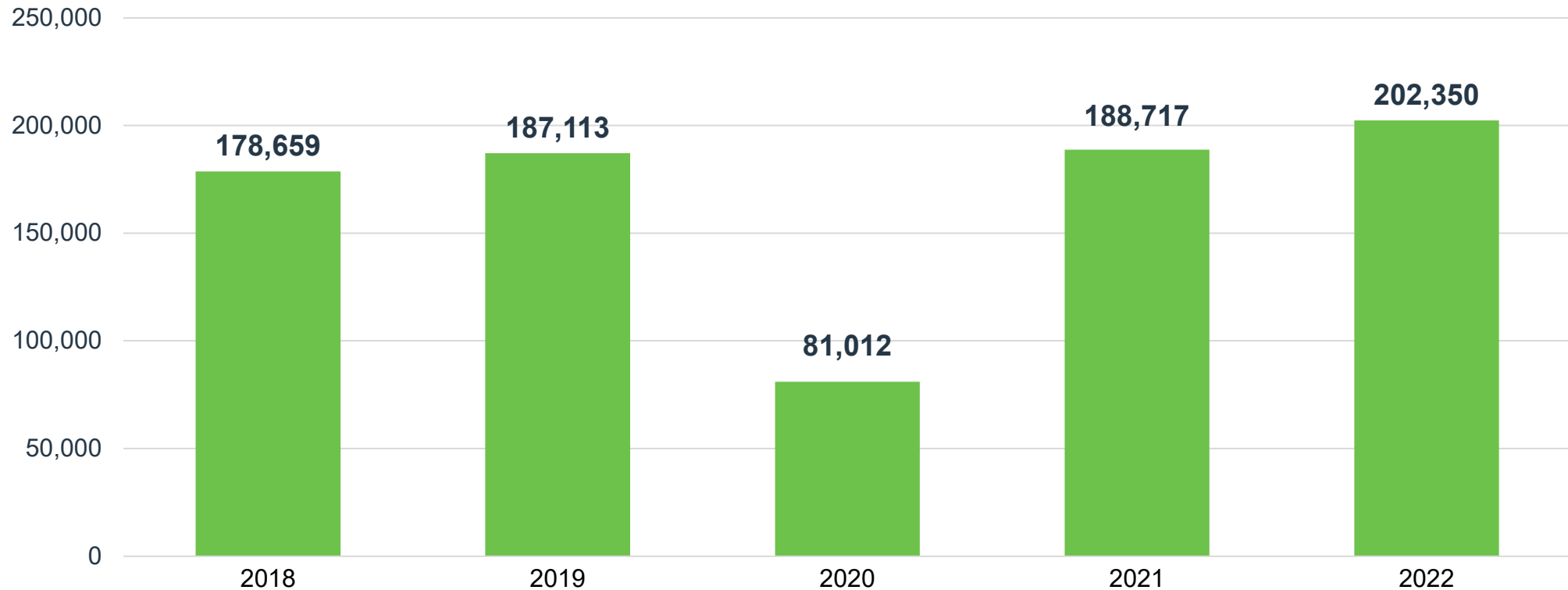
New Face in Credentialing!



Welcome,
Stephanie Dwyer
Airport Credentialing
Supervisor

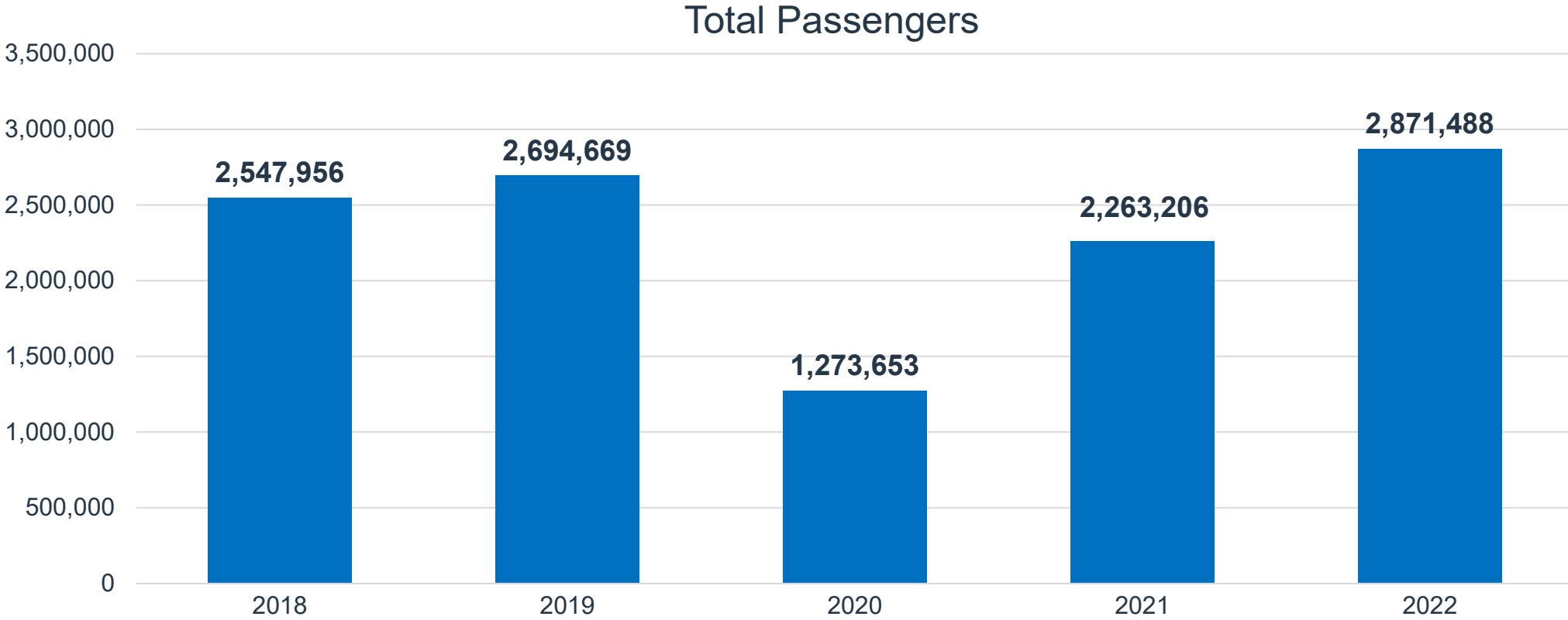
August Enplanements

Up 6% from August 2019



2022 Total Passengers (through August)

Up 7% over 2019 | Up 27% over 2021



Top 10 Operating Revenue Description	FY 2022	FY 2021	\$ Change	% Change
Parking Lot	\$ 13,427,836	\$ 8,505,849	\$ 4,921,987	58%
Rental Car Concession	\$ 5,540,615	\$ 4,632,051	\$ 908,564	20%
Industrial Land Rent	\$ 3,640,511	\$ 3,745,929	\$ (105,418)	-3%
Terminal Rent - Airlines	\$ 3,364,783	\$ 2,933,497	\$ 431,286	15%
Signatory Airline Landing Fees	\$ 2,766,210	\$ 2,698,655	\$ 67,555	3%
Terminal Concessions – Food/Beverage	\$ 1,107,397	\$ 681,800	\$ 425,597	62%
Terminal Concessions – Retail	\$ 991,079	\$ 874,727	\$ 116,352	13%
Landings/Freight	\$ 829,703	\$ 710,668	\$ 119,035	17%
Terminal Rent – Non-Airlines	\$ 525,081	\$ 583,136	\$ (58,055)	-10%
Advertising	\$ 520,809	\$ 373,955	\$ 146,854	39%
Total Top 10 Operating Revenue	\$ 32,714,024	\$ 25,740,267	\$ 6,973,757	--
Other Operating Revenue	\$ 3,256,731	\$ 2,612,634	\$ 644,097	25%
Total Operating Revenue	\$ 35,970,755	\$ 28,352,901	\$ 7,617,854	27%

Top 10 Operating Expenses Description	FY 2022	FY 2021	\$ Change	% Change
Personnel	\$ 9,823,823	\$ 8,618,952	\$ 1,204,871	14%
Indirect Cost Reimbursement	\$ 3,495,276	\$ 1,660,068	\$ 1,835,208	111%
Policing Services	\$ 3,032,533	\$ 2,850,015	\$ 182,518	6%
Fire Services	\$ 2,871,034	\$ 2,696,906	\$ 174,128	6%
Parking Management	\$ 2,388,997	\$ 1,291,735	\$ 1,097,262	85%
Power	\$ 779,582	\$ 743,005	\$ 36,577	5%
R/M – Structural/Electrical/Plumbing	\$ 665,899	\$ 1,104,614	\$ (438,715)	-40%
R/M – Fleet Management	\$ 535,715	\$ 352,243	\$ 183,472	52%
Chemicals	\$ 451,875	\$ 386,611	\$ 65,264	17%
Engineering Services	\$ 336,996	\$ 97,912	\$ 239,084	244%
Total Top 10 Operating Expenses	\$ 24,381,730	\$ 19,802,061	--	--
Other Operating Expense	\$ 5,110,025	\$ 3,777,163	\$ 1,332,862	35%
Total Operating Expense	\$ 29,491,755	\$ 23,579,224	\$ 5,912,531	25%

The logo consists of three curved, overlapping shapes: a light blue shape on top, a green shape in the middle, and a darker blue shape on the bottom, all curving upwards and to the right.

Boise Airport

www.iflyboise.com