



November Commission Report

Director's Update

Given by Rebecca Hupp, Airport Director
Boise Airport

NOVEMBER 2, 2022

October Runway Closures

10R/28L

- 10/11: 11:44am – 12:45pm, GA Aircraft had a Flat Tire on Landing
- 10/19: 8:30am – 3:30pm, Emergency Repair on TWY Juliet
- 10/26: 8:00am – 9:00am, Routine Light Maintenance

10L/28R

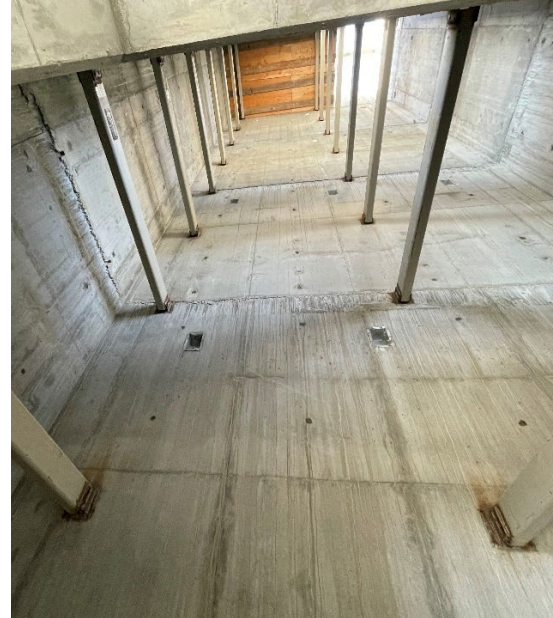
- 10/18: 8:00am – 9:00am, Routine Light Maintenance
- 10/25: 8:00am – 8:24am, Routine Light Maintenance



Public Parking Garage Construction

East Public Garage

- Construction continues vertically, with concrete placed on the second-floor deck and construction of level 3 deck in progress
- Elevator guiderails supports and metal stud framing continues in the Main Stair



Employee Parking Garage Construction



- Concrete has been placed and forms removed at the main stair/elevator tower
- Forms for retaining wall and CIP wall continue to be installed
- Construction of footings in progress

TSA Checkpoint Expansion



- Relocated fish wall has been placed
- Carpet installed for the new 7th lane
- Build-out for CLEAR nearly complete

Taxilane Sierra

Taxilane S, New Cargo Apron

- Taxilane S is complete
- Cargo Apron is complete

Gowen Rd Improvements – Cargo Facility Access Road

- Cargo Facility Access Road is complete
- Gowen Road improvements are complete
- Contractor is currently finishing all final punch list items

Amazon Cargo Facility (Non-Airport)

- Amazon has a TCO (Temporary Certificate for Occupancy)
- Facility is expecting its first flight arrival on November 3



Taxilane N and Taxilane S: Phase 2 Extension

Taxilane N Construction:

- Work continues outside of the movement area with asphalt paving in October
- Project will pause for the winter, then resume in Spring 2023 to complete the tie-in of Taxilane N to Taxiway A

Taxilane S Extension Construction:

- Project extends Taxilane S approximately 230' to the east
- Location of the project does not impact any airline tenants or operations
- Underground utilities have been installed and grading continues
- Project is expected to be paved week of November 7th



Harvard Street Closure

- Closing Harvard St between Zeppelin St & Ed Stimpson Way (behind the ATCT)
 - Completed as part of a land lease amendment with the Guard
 - Constructing two, new cul-de-sacs to close public access to Harvard St
- Phase 1: Zeppelin St cul-de-sac
 - Construction began October 3rd
 - Paving first week of November
- Phase 2: Ed Stimpson Way cul-de-sac
 - Construction to begin in Spring 2023



Alaska/Horizon Glycol Tank Facility (Non-Airport)

- Tank Facility is complete and will be commissioned on Tuesday, 11/1 and Wednesday, 11/2
- Alaska/Horizon will be trained on using the facility Thursday, 11/3
- Alaska/Horizon existing facility will be removed in the upcoming weeks



Economy Lot Expansion

- Adding 350 parking spaces in the NW quadrant of the economy parking lot
- Curbing and sidewalks are in. Lot is expected to be paved the first of week of November, followed by landscaping and lighting
- Project expected to be completed and open to the public by mid-November



Holiday Parking Update

- The Economy Lot reached capacity one weekend in October
 - Overflow parking was opened, but not needed
- Based on forecasting, it is expected that the expanded Economy Lot will have sufficient capacity to accommodate holiday travelers
 - An overflow lot adjacent to the Economy Lot will be available in the event it is required



Finalizing an Agreement with CLEAR

- City Council approved CLEAR's property lease agreement on 10/25
- CLEAR is now constructing lanes and installing kiosks to begin service
- Ribbon cutting and media event planned for Tuesday, 11/15—right in time for holiday travel



TSA 20 Year Anniversary at BOI



We gathered to celebrate and recognize the TSA for their continued dedication and service to the Boise Airport!

10 Years at the Boise Airport

Allegiant Air celebrated a milestone anniversary this month!



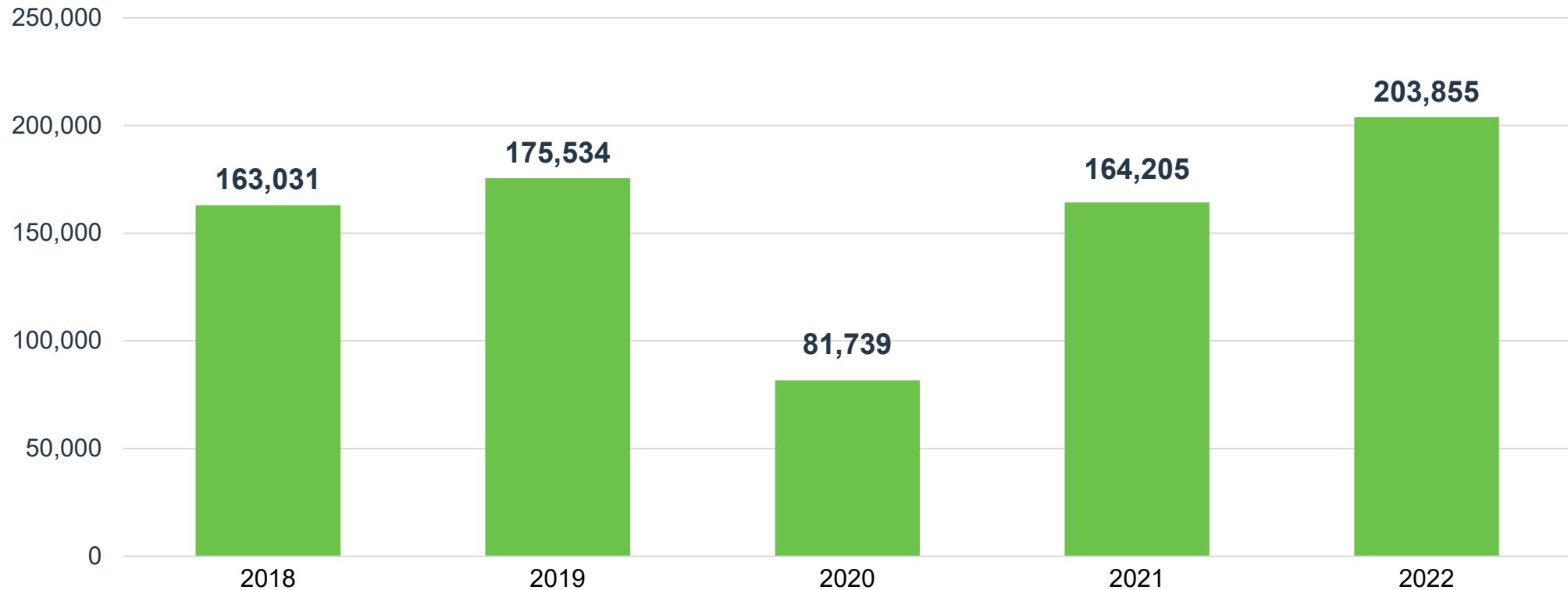
2022 Snow Symposium

- Snow Symposium was held to prep the team for upcoming winter weather
- Topics included de-icing protocols, the SMGCS plan and snow/ice removal priority areas
- NWS Boise predicts we have a 75% chance of our region seeing La Niña weather conditions this winter—meaning below-average temperatures and above-average precipitation



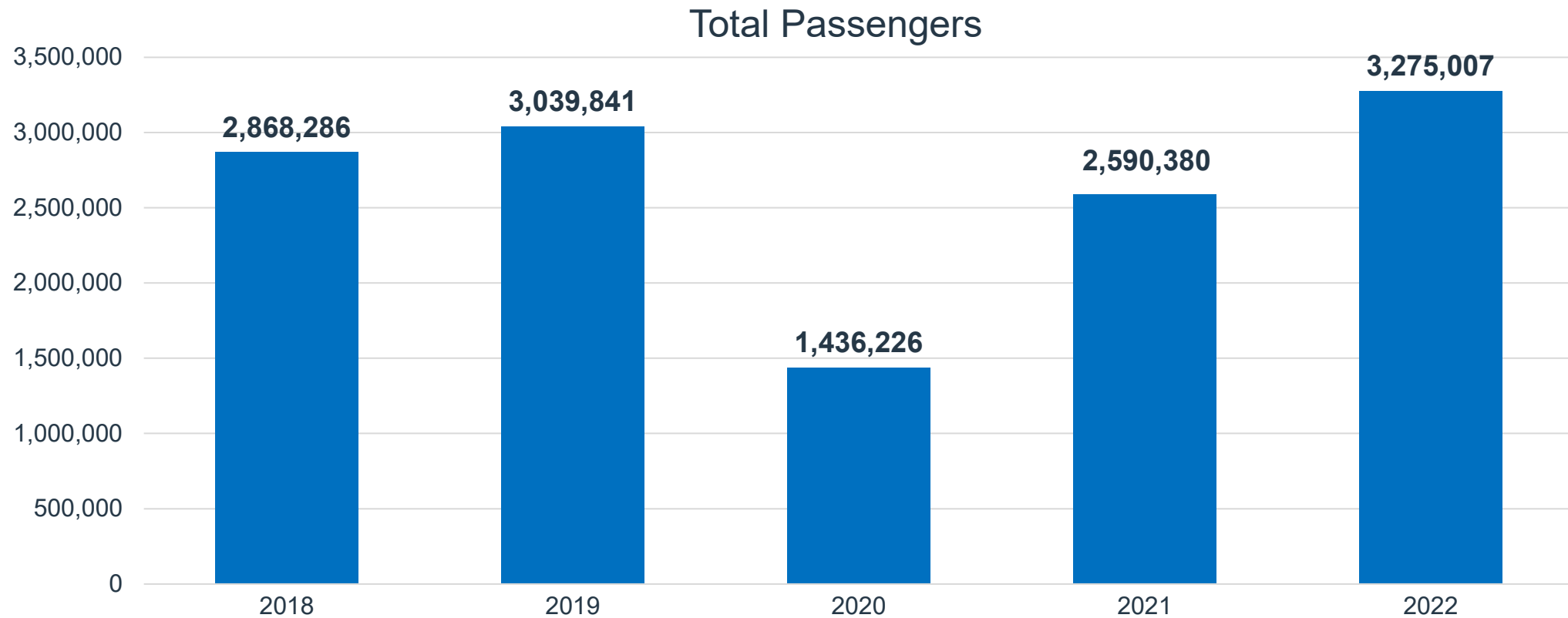
September Enplanements

Up 17% from September 2019!



2022 Total Passengers (through September)

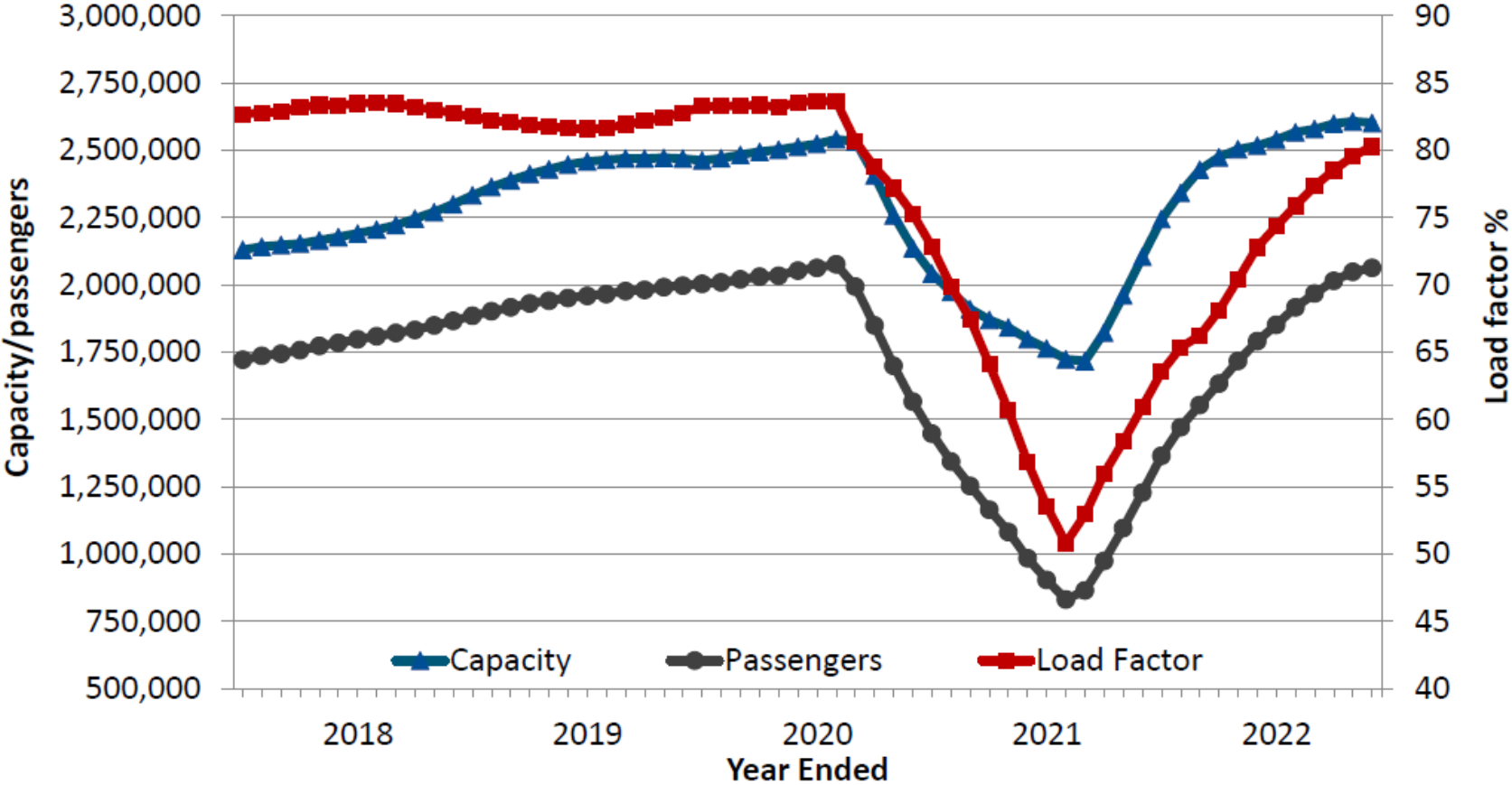
Up 8% over 2019 | Up 26% over 2021



Top 10 Operating Revenue Description	FY 2022	FY 2021	\$ Change	% Change
Parking Lot	\$ 14,748,135	\$ 9,574,907	\$ 5,173,228	54%
Rental Car Concession	\$ 6,235,101	\$ 5,541,667	\$ 693,434	13%
Industrial Land Rent	\$ 4,000,764	\$ 4,084,318	\$ (83,554)	-2%
Terminal Rent - Airlines	\$ 3,703,611	\$ 3,295,971	\$ 407,640	12%
Signatory Airline Landing Fees	\$ 3,592,416	\$ 2,877,254	\$ 715,162	25%
Terminal Concessions – Food/Beverage	\$ 1,314,512	\$ 772,753	\$ 541,759	70%
Terminal Concessions – Retail	\$ 1,254,168	\$ 1,093,016	\$ 161,152	15%
Landings/Freight	\$ 894,097	\$ 806,447	\$ 87,650	11%
Employee Parking Permits	\$ 597,418	\$ 500,740	\$ 96,678	19%
Terminal Rent – Non-Airlines	\$ 596,172	\$ 658,699	\$ (62,527)	-9%
Total Top 10 Operating Revenue	\$ 36,936,396	\$ 29,205,772	\$ 7,730,624	--
Other Operating Revenue	\$ 3,670,852	\$ 3,093,292	\$ 577,560	19%
Total Operating Revenue	\$ 40,607,248	\$ 32,299,064	\$ 8,308,184	26%

Top 10 Operating Expenses Description	FY 2022	FY 2021	\$ Change	% Change
Personnel	\$ 10,810,734	\$ 9,509,794	\$ 1,300,940	14%
Indirect Cost Reimbursement	\$ 3,778,897	\$ 1,798,959	\$ 1,979,938	110%
Policing Services	\$ 3,620,276	\$ 3,109,107	\$ 511,169	16%
Fire Services	\$ 3,169,337	\$ 2,942,079	\$ 227,258	8%
Parking Management	\$ 2,737,039	\$ 1,398,608	\$ 1,338,431	96%
Power	\$ 885,295	\$ 828,422	\$ 56,873	7%
R/M – Structural/Electrical/Plumbing	\$ 788,129	\$ 1,337,987	\$ (549,858)	-41%
Minor Equipment	\$ 608,326	\$ 274,094	\$ 334,232	122%
R/M – Fleet Management	\$ 581,267	\$ 410,714	\$ 170,553	42%
Engineering Services	\$ 487,939	\$ 142,047	\$ 345,892	244%
Total Top 10 Operating Expenses	\$ 27,467,238	\$ 21,751,811	--	--
Other Operating Expense	\$ 6,204,008	\$ 4,715,964	\$ 1,488,044	32%
Total Operating Expense	\$ 33,671,246	\$ 26,467,775	\$ 7,203,471	27%

Boise Traffic/Capacity Trends



YE June 2022 capacity was up 24% while passengers were up 68%, **leading to a 19% point increase in the average load factor (80%).**

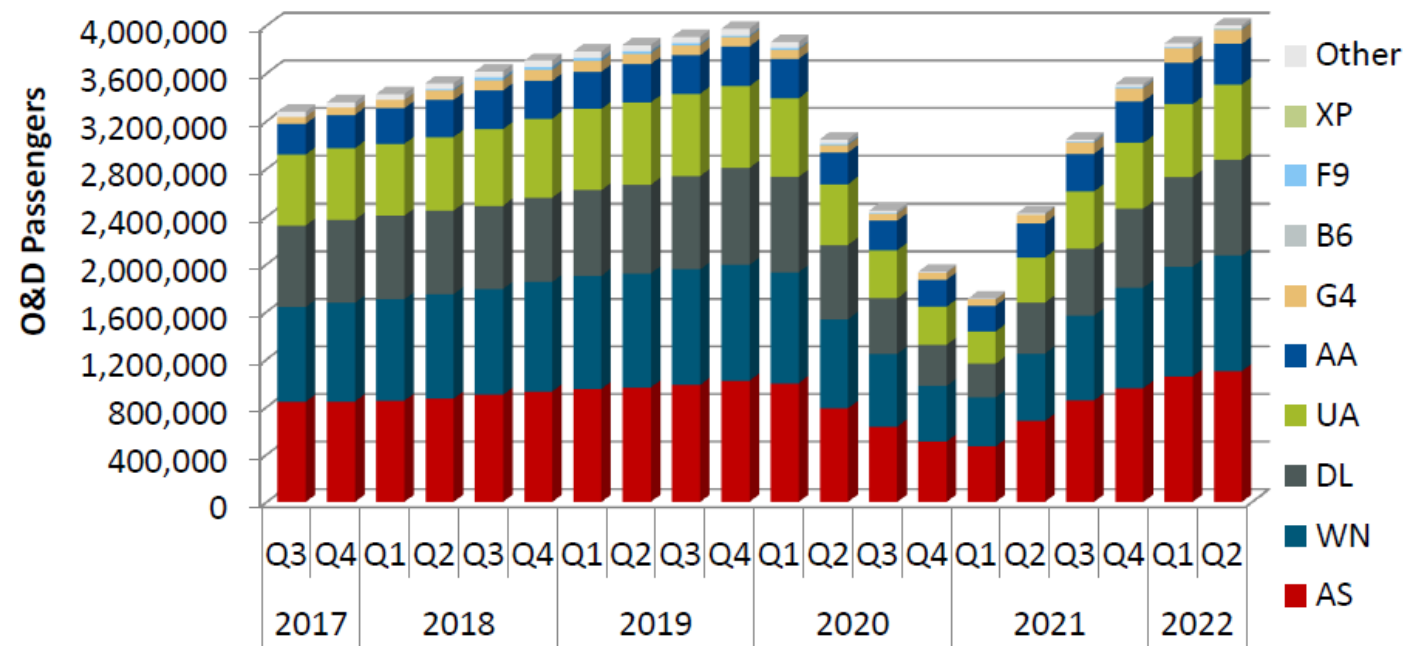
Top Origination/Destination Markets

Rank	Destination	O&D Pax	O&D Revenue	Average Fare (\$)	Yield (¢)	% Change Since Q2 2021			
						Pax	Rev	Fare	Yield
1	Seattle, WA	80,465	9,391,666	117	29	1	73	71	71
2	Los Angeles, CA	54,744	8,406,770	154	23	6	77	68	68
3	Phoenix, AZ (PHX)	54,535	7,909,027	145	20	17	70	45	45
4	Denver, CO	42,296	7,248,174	171	26	30	91	47	47
5	Las Vegas, NV	41,320	5,653,408	137	26	4	56	50	50
6	Portland, OR	39,689	5,787,251	146	42	35	70	25	25
7	San Diego, CA	38,473	5,903,681	153	20	14	82	60	60
8	Sacramento, CA	31,384	4,307,566	137	31	6	65	56	56
9	San Francisco, CA	28,709	4,175,429	145	28	69	119	30	30
10	Orange County, CA	26,836	3,512,622	131	19	30	130	76	76
11	Spokane, WA	26,393	3,439,686	130	45	20	66	38	38
12	Oakland, CA	23,592	2,783,592	118	23	(1)	50	52	52
13	San Jose, CA	21,753	2,907,968	134	26	81	119	21	21
14	Chicago, IL (ORD)	18,504	5,362,796	290	20	48	157	74	74
15	Salt Lake City, UT	18,144	3,545,115	195	67	49	69	13	13
16	Dallas, TX (DFW)	18,126	5,277,497	291	23	29	106	59	59
17	Minneapolis, MN	15,469	3,746,141	242	21	34	91	43	43
18	Atlanta, GA	14,508	4,779,745	329	18	48	130	55	55
19	Orlando, FL (MCO)	14,166	4,324,207	305	14	(14)	67	95	95
20	Burbank, CA	13,777	1,598,098	116	18	186	222	13	13
Total/Average		1,058,181	237,459,092	224	19	19	94	63	54

Each of the top 20 markets had increases in passengers in Q2 2022 versus Q2 2021, except OAK and MCO.

Boise Airline Market Share

Airline passenger shares remained the same as the previous year ended period



Year	Quarter	Airline Market Share									
		AS	WN	DL	UA	AA	G4	B6	F9	XP	Other
2020	Q3	26%	25%	19%	17%	10%	2%	0%	0%	0%	1%
	Q4	26%	24%	18%	16%	12%	3%	0%	0%	0%	1%
2021	Q1	27%	24%	17%	16%	13%	3%	0%	0%	0%	0%
	Q2	28%	23%	18%	16%	12%	3%	0%	0%	0%	0%
	Q3	28%	24%	18%	16%	10%	3%	0%	0%	0%	1%
	Q4	27%	24%	19%	16%	10%	3%	0%	0%	0%	1%
2022	Q1	27%	24%	20%	16%	9%	3%	0%	0%	0%	1%
	Q2	27%	24%	20%	16%	9%	3%	0%	0%	0%	1%

Boise Forward Looking Schedule

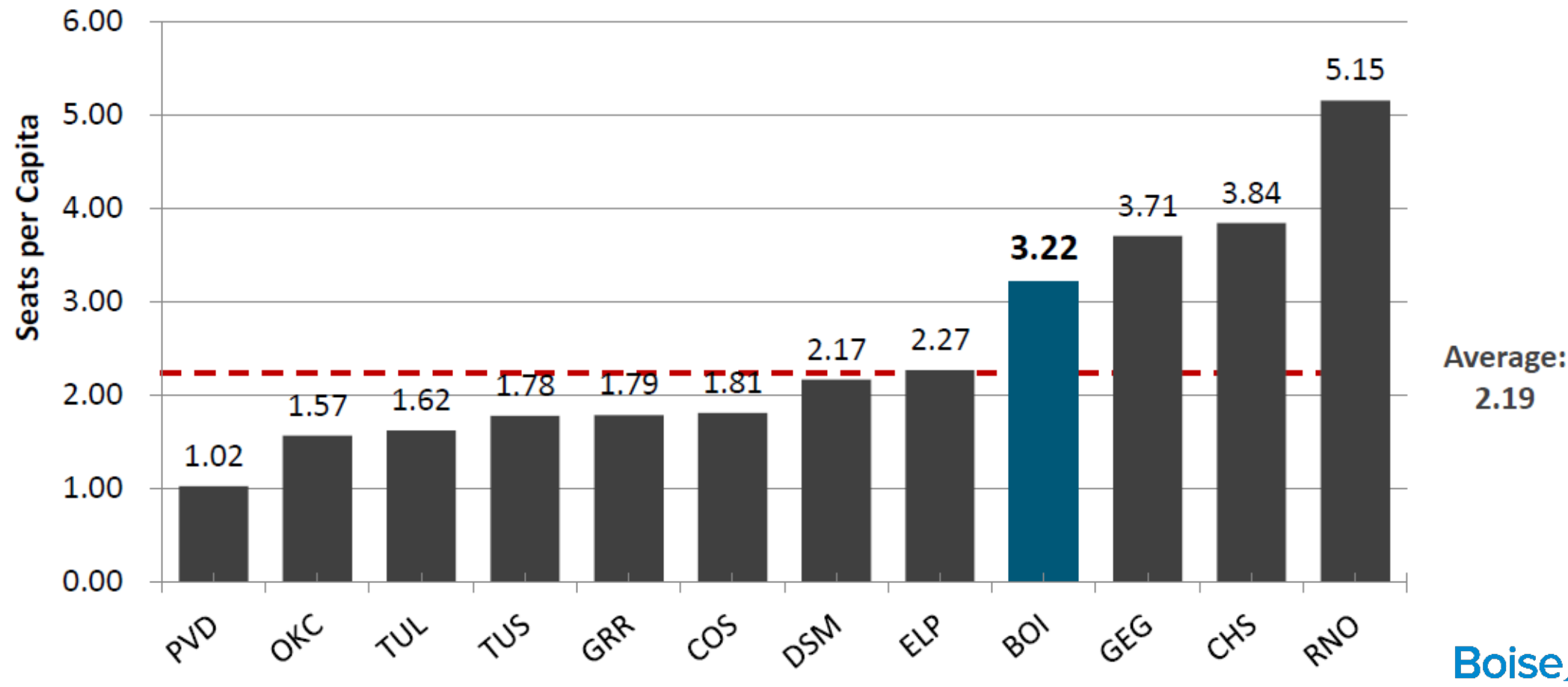


Over the next 6 months, **BOI's flights and seats are scheduled to increase by 4% and 17%, respectively, compared to the same months in the prior year.**

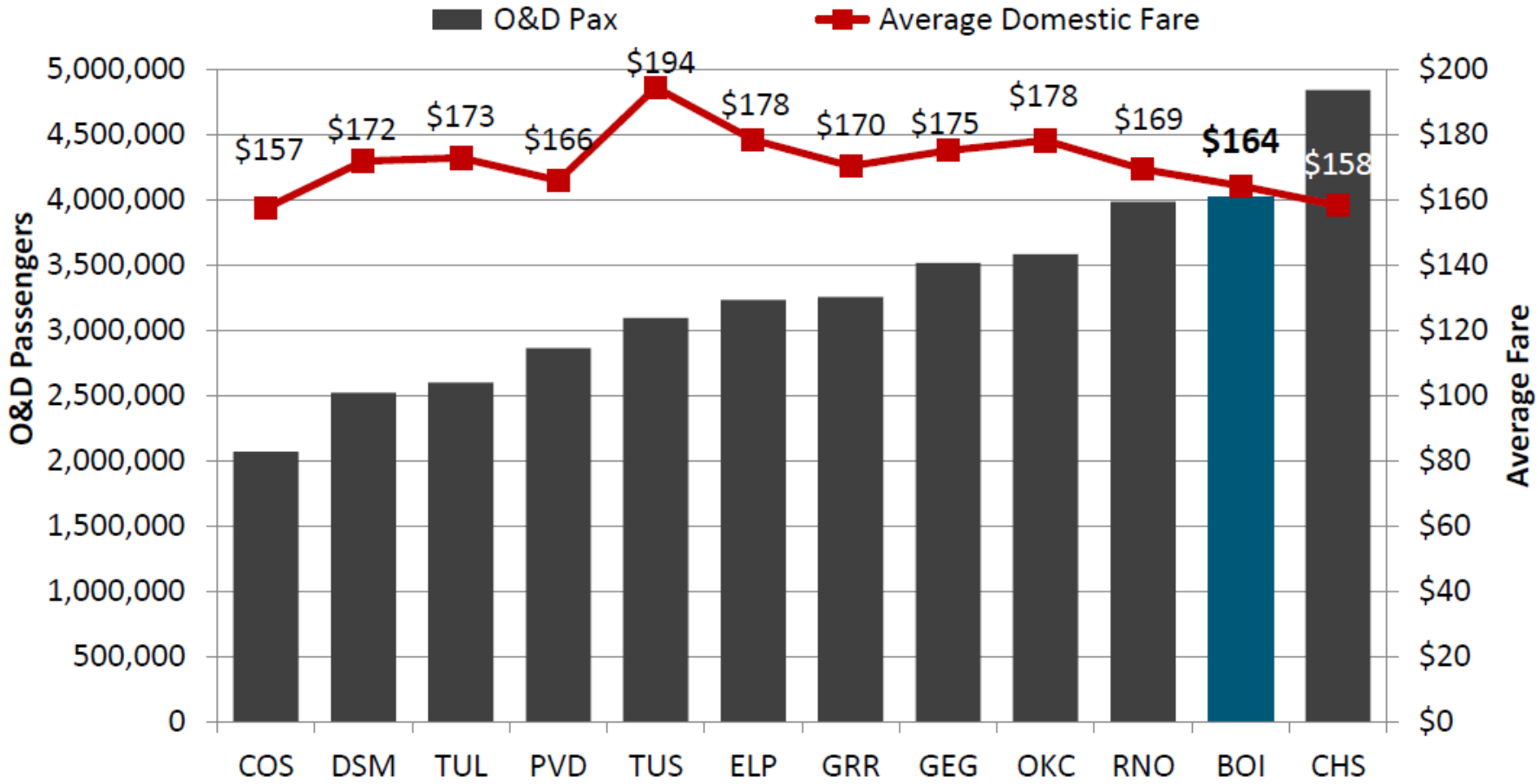
Airline	Destination	Year-Over-Year Change %											
		Oct 2022		Nov 2022		Dec 2022		Jan 2023		Feb 2023		Mar 2023	
		Flts	Seats	Flts	Seats	Flts	Seats	Flts	Seats	Flts	Seats	Flts	Seats
Total		1%	11%	3%	17%	7%	28%	(2%)	16%	(2%)	11%	15%	22%

Seats Per Capita Comparison

BOI exceeds all comparison markets except Spokane (GEG), Charleston (CHS) and Reno (RNO) in seats per capita and increased from 3.19 to 3.22 from YE Q1 2022 to YE Q2 2022.



Origination/Destination Passenger and Airfare Comparison



Boise ranked 2nd in terms of O&D passengers and had the 3rd lowest average domestic fare

Year-Over-Year Comparisons

Airport	2022 MSA Population	YE Q2 2022			YOY Change		
		# of Nonstop Destinations	O&D Pax	Seats	# of Nonstop Destinations	O&D Pax	Seats
Reno, NV	503,959	36	3,987,495	5,195,643	12	70%	38%
Spokane, WA	598,354	22	3,517,463	4,434,269	3	61%	11%
Des Moines, IA	725,916	32	2,519,945	3,146,875	7	81%	43%
Colorado Springs, CO	771,880	13	2,067,329	2,792,910	3	92%	68%
Boise, ID	807,701	30	4,016,887	5,202,566	5	66%	24%
Charleston, SC	824,403	53	4,841,496	6,337,436	15	100%	65%
El Paso, TX	879,754	17	3,234,159	3,990,675	1	88%	69%
Tulsa, OK	1,030,642	26	2,599,748	3,338,714	8	64%	31%
Tucson, AZ	1,061,835	21	3,093,390	3,772,054	2	78%	38%
Grand Rapids, MI	1,098,604	36	3,256,323	3,926,424	2	64%	25%
Oklahoma City, OK	1,454,965	26	3,583,648	4,563,466	4	64%	38%
Providence, RI	1,679,169	31	2,863,738	3,440,269	9	109%	65%

While growth has been significant, BOI had one of the lowest percentage increases in seats and passengers of the comparison markets



Boise Airport

www.iflyboise.com