



December Commission Report

Director's Update

Given by Rebecca Hupp, Airport Director
Boise Airport

DECEMBER 7, 2022

November Runway Closures

10R/28L

- 11/2: 7:00 – 8:00am, Routine Light Maintenance
- 11/9: 1:45pm – 2:45pm, Snow Removal
- 11/15: 8:00am – 2:06pm, In-ground Temperature Sensor Maintenance and Airfield Maintenance
- 11/22: 4:07pm – 4:30pm, In-flight Emergency. Loss of Hydraulics, Landed Safely
- 11/28: 10:03am – 10:17am, Chemical Application
- 11/30: 8:00am – 9:00am, Routine Light Maintenance

10L/28R

- 11/1: 7:00am – 7:56am, Routine Light Maintenance
- 11/8: 8:00am – 4:00pm, In-ground Temperature Sensor Maintenance and Airfield Maintenance
- 11/22: 9:00am – 10:00am, Routine Light Maintenance
- 11/28: 9:45am – 10:02am, Chemical Application
- 11/29: 8:00am – 9:00am, Routine Light Maintenance



Public Parking Garage Construction

East Public Garage

- Construction of level 3 in progress
- Installation of louvers in the Pedestrian Bridge in progress
- New west surface parking and exit road is ready to receive asphalt paving



Employee Parking Garage Construction



- Construction of retaining wall in progress
- Forms are being installed for CIP Walls of the main stair/elevator tower

TSA Checkpoint Expansion

- 7th screening lane was turned over to TSA mid-November
- CLEAR's leased area was turned over for their launch mid-November
- Office build-out happening for LEO's and TSA now



Consolidated Rental Car Facilities

- Received a height variance CUP from Planning and Zoning
- Design review scheduled for December 14
- Working towards breaking ground in 2023



Economy Lot Expansion

- 340 parking spaces in the NW quadrant of the economy parking lot were completed and available for Thanksgiving travel
- Parking spots were used—and needed—to accommodate passenger vehicles during this busy travel season



Thanksgiving Travel

- The Boise Airport welcomed over 150,000 passengers during the peak Thanksgiving travel season
- Traditional parking options were able to accommodate demand
 - Economy lot expansion added 340 spaces
 - Valet lot was expanded to add 40 spaces
- Go Team Therapy Dogs visited peak travel times to calm anxious passengers
- The Boise Airport received earned media coverage regarding holiday travel tips across all local broadcast stations



Delta Toys for Tots Drive



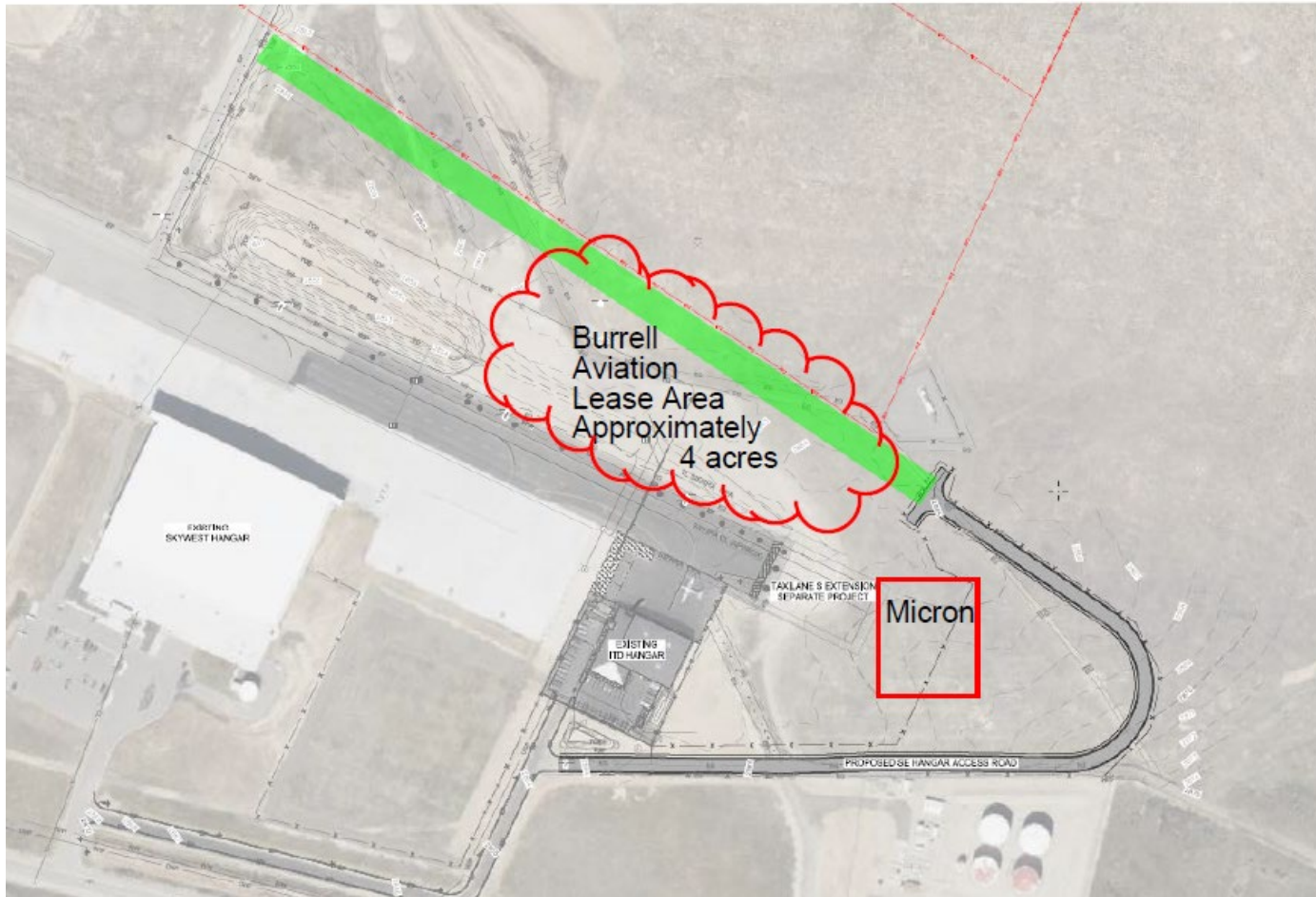
- Delta Air Lines held a successful toy drive in the lower rotunda, benefitting Toys for Tots on November 18th
- Were able to fill a bag cart with donated, unwrapped toys

BOI Welcomes CLEAR

- Ribbon cutting and media event took place on 11/15—right in time for holiday travel
- CLEAR's kiosk space was made possible through the checkpoint expansion project



Burrell Aviation Idaho



- City Council approved a land lease with Burrell Aviation Idaho on 11/25
- Lease covers approx. 4 acres on the north side of Taxilane S
 - Must begin construction by 11/30/24
 - Must complete construction by 11/30/25
 - Rent begins 10/1/23

Airline Use and Lease Agreement

- Received signed agreements from the majority stake of airline and cargo holders, allowing the airport to move forward with the new agreement rather than rates by resolution
- Final AULA agreement will go to City Council for approval as a resolution



Amazon Air's First Flight

The first daily flight arrived November 3rd



Safety Management System (SMS) Implementation

WHAT IS SMS?

- A formal, organization-wide approach to managing safety risk and assuring effectiveness of safety risk controls
- The FAA is in the final stages of requiring airports implement an SMS Program for the airfield

SMS AT BOI

- 2022:
 - BOI working to formalize our current safety policies into a SMS Manual
 - Internal staff training was held in November
 - Tenant training occurring this week
- 2023:
 - Phased Implementation with a reporting hotline and website for employees at BOI
 - SMS Orientation added to credentialing training



Welcome to the Team!



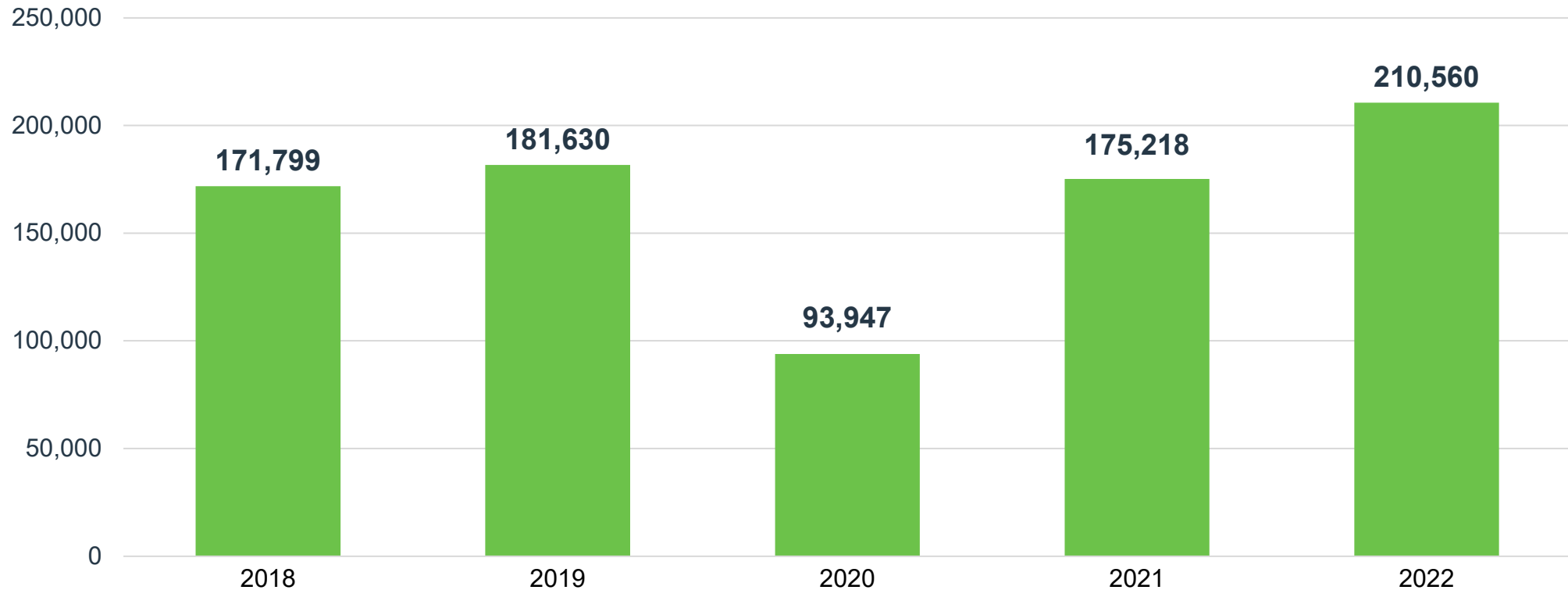
Ginger Hendrix
Airport Property and
Contracts Coordinator



Mardi Mendenhall
Airport Property and
Contracts Coordinator

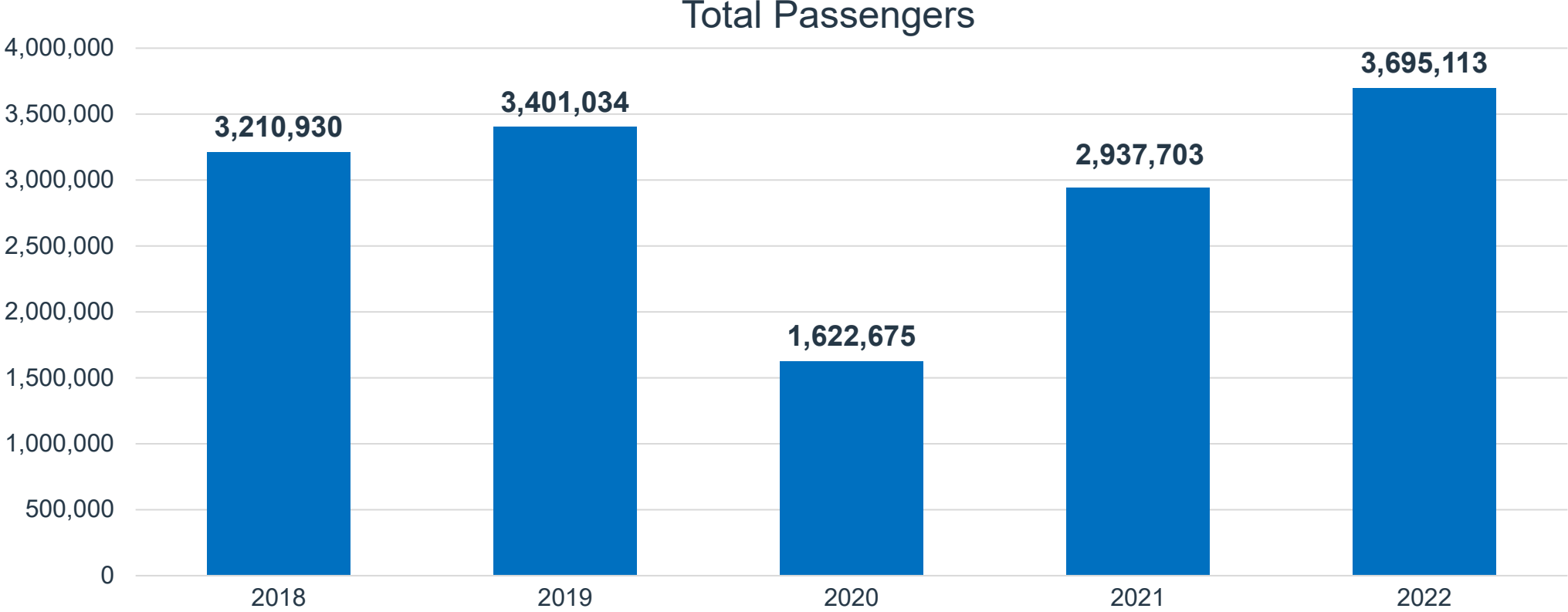
October Enplanements

Up 16% from October 2019



2022 Total Passengers (through October)

Up 9% over 2019 | Total passengers seen in October was 2nd highest in BOI history!



Top 10 Operating Revenue Description	FY 2023	FY 2022	\$ Change	% Change
Parking Lot	\$ 1,537,522	\$ 1,152,135	\$ 385,387	33%
Rental Car Concession	\$ 679,842	\$ 659,138	\$ 20,704	3%
Signatory Airline Landing Fees	\$ 349,923	\$ 527,024	\$ (177,101)	-34%
Industrial Land Rent	\$ 339,419	\$ 339,456	\$ (37)	0%
Terminal Rent - Airlines	\$ 292,807	\$ 269,217	\$ 23,590	9%
Terminal Concessions – Retail	\$ 172,677	\$ 138,149	\$ 34,528	25%
Terminal Concessions – Food/Beverage	\$ 154,242	\$ 95,323	\$ 58,919	62%
Landings/Freight	\$ 66,386	\$ 74,971	\$ (8,585)	-11%
Terminal Rent – Non-Airlines	\$ 45,941	\$ 45,044	\$ 897	2%
TNC Revenue	\$ 45,918	\$ 31,860	\$ 14,058	44%
Total Top 10 Operating Revenue	\$ 3,684,677	\$ 3,332,317	\$ 352,360	--
Other Operating Revenue	\$ 263,033	\$ 345,816	\$ (82,783)	-24%
Total Operating Revenue	\$ 3,947,710	\$ 3,678,133	\$ 269,577	7%

Top 10 Operating Expenses Description	FY 2023	FY 2022	\$ Change	% Change
Personnel	\$ 1,157,500	\$ 877,841	\$ 279,659	32%
Indirect Cost Reimbursement	\$ 500,275	\$ 370,382	\$ 129,894	35%
Parking Management	\$ 195,872	\$ 92,311	\$ 103,561	112%
Power	\$ 82,089	\$ 67,491	\$ 14,598	22%
R/M – Structural/Electrical/Plumbing	\$ 53,174	\$ 12,865	\$ 40,308	313%
R/M – Fleet Management	\$ 40,412	\$ 39,101	\$ 1,311	3%
Credit Card Fees	\$ 32,156	\$ 24,102	\$ 8,054	33%
Special Department Supplies	\$ 29,401	\$ 14,500	\$ 14,901	103%
Building/Land Rentals	\$ 21,401	\$ 4,893	\$ 16,468	337%
Janitorial Services	\$ 19,564	\$ 25,874	\$ (6,310)	-24%
Total Top 10 Operating Expenses	\$ 2,131,803	\$ 1,529,359	--	--
Other Operating Expense	\$ 204,518	\$ 87,335	\$ 117,183	134%
Total Operating Expense	\$ 2,336,321	\$ 1,616,694	\$ 719,627	45%



Boise Airport

www.iflyboise.com