

APPENDIX D

Noise Level Reduction Construction Technical Report

Wyle Report
WR 04-09
ACOUSTICAL DESIGN GUIDE
FOR RESIDENCES

Prepared For

CITY OF BOISE
Part 150 Study Update

Prepared By

Clint Morrow
Gary Ehrlich
Wyle Acoustics Group
WYLE LABORATORIES
2001 Jefferson Davis Highway
Suite 701
Arlington, Virginia 22202

(J/N 10459)

April 2004

Table of Contents

1.0	Introduction.....	1-1
1.1	Background.....	1-1
1.2	How to Use This Guide	1-1
2.0	Noise Control Basics	2-1
2.1	Units Used in Acoustics.....	2-1
2.2	Aircraft Noise	2-3
2.3	Sound Insulation to Reduce Noise.....	2-4
2.4	Basic Sound Insulation Concepts	2-5
3.0	Building Elements.....	3-1
3.1	Evaluating Construction Materials and Methods	3-1
3.2	Sealing and Weatherstripping.....	3-2
3.3	Windows.....	3-2
3.4	Doors	3-5
3.5	Walls and Ceilings.....	3-7
3.6	Attics and Roofs	3-11
3.7	Floors and Crawl Spaces.....	3-13
3.8	Mechanical Systems and Building Penetrations	3-14
4.0	New Construction: Material Selection Chart	4-1
4.1	Limitations.....	4-2
5.0	Existing Construction: Sound Insulation Renovation.....	5-1
5.1	Federally Mandated Noise Goals	5-1
5.2	Housing Survey	5-2
5.3	Prototypical Houses.....	5-4
5.4	Sound Insulation Designs	5-4
5.5	Local Building Code Requirements	5-7
Appendix		
Appendix A	New Construction: Noise Level Reduction Design Requirements	A-1
Appendix B	Manufacturers of Acoustical Materials	B-1
Appendix C	Independent Certified Acoustical Testing Laboratories.....	C-1
Appendix D	Glossary.....	D-1
Appendix E	Housing Survey.....	E-1

List of Figures

Figure No.

2-1 Pictorial Representation of Sound Transmission Through Built Construction 2-5
2-2 Sound Transmission Paths Into Dwelling Interiors 2-6
3-1 Typical Aluminum Dual Window Detail 3-3
3-2 Construction Features of Acoustical Window 3-4
3-3 Sliding Glass Door Detail 3-7
3-4 Staggered Wood Stud Construction 3-9
3-5 Built-in-Place Gable Baffle 3-12
3-6 Controlling Noise Entering Through Ducts in Attic Space..... 3-16

List of Tables

Table No.

2-1 Typical STC Ratings for Common Construction Elements 2-8
3-1 Acoustical Wall Designs and STC Ratings..... 3-10
3-2 Material Thickness and R-Value for Common Insulating Materials 3-13
4-1 Material Selection Chart and Corresponding STC Ratings 4-1
5-1 Summary of Survey Houses..... 5-4
5-2 Sound Insulation Designs for Survey House 2 5-5
5-3 Sound Insulation Designs for Survey House 3 5-5
5-4 Sound Insulation Designs for Survey House 7 5-6

1.0 Introduction

1.1 Background

Residences located near airports experience many economic and transportation benefits of the facility, but are unfortunately exposed to significant amounts of aircraft noise. However, using proper construction techniques and materials minimizes the impact of aircraft noise and reduces interference with regular indoor activities. The city of Boise, Idaho, in support of its Part 150 Study Update, has developed this Acoustical Design Guide to assist builders, planning officials, building inspectors, and homeowners in incorporating specific noise level reduction features into the designs of homes. These features will help to ensure that homes in the airport vicinity provide an adequate noise level reduction to protect occupants from undesirable noise impacts.

For homes located in areas with high noise levels, standard building methods, even those that are designed for thermal efficiency (such as the International Energy Code 2000, which is currently adopted in the Boise Airport Influence Area), are normally inadequate to protect inhabitants from external noise. For this reason, building design and construction methods may have to be modified for noise-sensitive rooms such as bedrooms, living rooms, and family rooms. These spaces are referred to as the habitable rooms in a house. Standard design and construction methods can typically be used for non-habitable rooms, such as garages, mudrooms, and breezeways unless they open directly to habitable rooms without interior doors in between the rooms.

This Design Guide provides recommendations for the design of dwellings in the vicinity of the airport that may be constructed in the future. Construction guidelines are presented for the noise level reductions (NLRs) of 25, 30, and 35 decibels. This guide also provides recommendations for the renovation of existing homes to provide sound insulation in accordance with Federal Aviation Administration (FAA) guidelines.

1.2 How to Use this Guide

This guide has been developed to be used by a variety of different professionals, as well as by interested homeowners. This guide is recommended for the following people:

- Planning Officials
- Plan Reviewers
- Building Inspectors
- Builders
- Homebuyers/Homeowners

Sections 2.0 Through 3.0

These design guide sections include a brief overview of sound transmission paths into a home, a discussion of basic design principles, and subsections for each building element including walls, windows, doors, ceilings, attics, floors, basements, crawlspaces, and ventilation systems. The building element subsections include text, tables, and design detail drawings to illustrate various options for noise control.

Section 4.0

Specific design modifications are presented in a selection chart. Designs that achieve noise level reductions (NLR) of 25, 30 and 35 dB are listed. The table in Section 4.0 presents the sound ratings of building materials that are needed to achieve the NLR design goals.

Section 5.0

This section discusses the renovation of existing homes to provide sound insulation. The requirements for such projects are discussed, and sound insulation designs are presented for three typical homes in the Boise Airport Influence Area.

Appendix

The first appendix provides a summary of design and construction methods necessary to achieve NLRs of 25, 30, and 35 dB. Once the reader is familiar with this Guide, Appendix A can be used as a stand-alone reference in implementing the designs. Appendices B and C will be useful to builders, as they provide information on many acoustical product manufacturers and certified test laboratories. Appendix D is a glossary that will be useful to all parties. Appendix E contains the full results of the Boise housing survey, which was used in the development of sound insulation designs for new and existing houses.

This Guide seeks to provide clear, unambiguous direction that is practical and can be implemented with minimum additional cost. However, construction quality is especially important for maintaining the acoustical integrity of a design. For example, even a good window, if not installed properly, will allow a significant amount of noise into the building. High-quality construction standards are absolutely essential for these techniques to work effectively.

The design packages in Section 4.0, Section 5.0, and Appendix A address typical home sizes and styles. Information about new and existing home construction was provided by a representative housing survey performed by CSHQA in February 2004. The noise analysis used here makes assumptions about the number of exterior doors and the size of the windows with respect to the floor area. Unusual homes may require more specialized analysis to ensure compliance. For example, very small rooms with normal windows have a

larger window-to-floor space ratio and may allow more noise intrusion than average sized rooms. Similarly, rooms with very large windows or a room with several windows and exterior doors may also allow more noise to enter. Unusually large windows would require better acoustical performance than is indicated in this report in order to meet the noise level reduction goals. *The use of cathedral ceilings is strongly discouraged for homes exposed to aircraft noise because the attic acts as a noise buffer.* Conversely, homes with large wrap-around porches may provide shielding from noise that the Guide will not anticipate. For these reasons, homes with unique features or with dimensions that differ significantly from the average may require the services of an acoustical consultant in order to ensure adequate noise reduction.

Individuals differ in their response to noise. In an aircraft noise-affected neighborhood, a number of residents are very annoyed by aircraft overflights, while quite a few others are not. If properly implemented, the recommendations in this Guide will reduce noise inside the home to levels that most people will find acceptable. The airplanes will still be discernible; sound insulation is not sound elimination. People will know that a plane is passing overhead but, with the techniques outlined in this Guide, the noise should not be so loud that it interferes with normal daily indoor activities. Those individuals, however, who are most sensitive to noise, may continue to be annoyed. Nevertheless, the number of people who perceive unacceptable indoor noise levels can be significantly reduced by the use of proper construction techniques.

2.0 Noise Control Basics

2.1 Units Used in Acoustics

A number of different metrics (measures) have been developed to express various aspects of acoustics. It is important to understand several of them in order to make the best use of this Guide.

Aircraft noise is generally expressed in terms of its A-weighted sound level, in units called "decibels." Strictly speaking, the decibel unit should be abbreviated only by "dB"; however, for clarity "dBA" and "dB(A)" are often used to highlight the fact that the sound level measurement has been A-weighted (this weighting system is described below).

The noise exposure in areas around airports is expressed in terms of the Day-Night Average Sound Level, which is abbreviated by "DNL" in text and " L_{dn} " in equations. DNL is a measure of the average A-weighted sound level of all aircraft flights occurring in a 24-hour period with nighttime operations being counted more heavily as described below. The unit of DNL is also the decibel.

The sound insulation properties of building construction materials are described by Sound Transmission Loss (TL) or Sound Transmission Class (STC). These measures of sound insulation are also described below.

A-Weighted Sound Level

The two most obvious characteristics of sound are level and frequency. Level is essentially a measure of loudness that refers to how much energy or power a sound has when we hear it. Frequency is essentially a measure of pitch. A deep-voiced baritone singer has a lower frequency (or pitch) than a soprano voice, though they may be equally loud. Hertz (abbreviated Hz) is the unit used to indicate frequency and is equal to the number of sound waves (cycles) per second. For reference, middle C on a piano has a frequency of exactly 256 Hz. The normal human ear can detect sound frequencies ranging from about 20 Hz to about 15,000 Hz. People do not hear all sounds over this wide range of frequencies equally well, however. The human ear is most sensitive to sounds in the 1000 to 6000 Hz range.

In order to reflect the differences in hearing sensitivity to different frequencies, sounds are usually described in terms of A-weighted sound levels. When a sound is A-weighted, sound levels measured in the 1000 to 6000 Hz frequency range are *increased* by a specified amount to account for the fact that the ear perceives them as louder compared to other frequencies. Similarly, sound levels measured at frequencies outside this range are *reduced* because the ear is less sensitive in those regions.

Day-Night Average Sound Level (DNL) and Noise Contours

Aircraft noise exposure in a community is usually described in terms of noise contour maps. These indicate bands or zones around airfields where the average noise level can be expected to fall within the ranges specified by the contour lines. The Federal Aviation Administration (FAA) states that areas with a noise exposure of DNL 65 dB and higher are "significantly" impacted by noise. Most noise contour maps show contour levels of DNL 65 dB and above in 5 dB increments.

The acoustic metric used is the Day-Night Average Sound Level (DNL or L_{dn}). This is a cumulative measure of the noise exposure during a 24-hour calendar day. A 10 dB penalty is added to noise events occurring between 10:00 p.m. and 7:00 a.m. to reflect their greater intrusiveness and potential for disturbing sleep. The DNL is the result of averaging the A-weighted sound pressure level over 24 hours for aircraft activities taking place on an average day. The average day is determined by analyzing flight activity over the period of one full year. This gives an indication of the year-round average noise exposure for the community.

Sound Transmission Loss (TL)¹

This is the physical measure that describes the sound insulation value of a building element such as a window or wall. Values of TL are determined in acoustical laboratories under controlled testing methods prescribed by the American Society for Testing and Materials (ASTM). The TL is expressed in decibels (dB), and the greater the sound insulation, the higher the TL value and the less sound will be transmitted through the building material. TL values are determined for different frequency ranges and give an indication of how a building product responds differently to sounds at different frequencies.

Sound Transmission Class (STC)²

Since working with a series of TL measurements for different frequencies can be cumbersome, a single-number descriptor based on the TL values has been developed. This rating method is called the Sound Transmission Class (STC). As with the TL, the greater the STC rating for a construction method or component, the higher the sound insulation. Originally, STC ratings were developed as a single-number descriptor for the TL of interior office or apartment walls for typical office noise and speech spectra. Now, they are used for exterior building components as well. Most acoustical materials and components are commonly specified in terms of their STC ratings.

¹ Typical tests to determine TL are described in American Society of Testing and Materials (ASTM) Standard E90.

² STC is described in ASTM Standard E413.

2.2 Aircraft Noise

Interference With Activities

The problem of aircraft noise has been recognized and studied in this country since the 1950s. Opinion surveys indicate that interference with telephone usage, listening to television and radio, and conversations invoke the most complaints. However, after a home has been sound insulated, residents notice improvements in their ability to carry out these normal activities as well as to fall asleep and concentrate.

Fears of permanent hearing damage from flyovers have been shown to be unfounded. A large number of studies on the physical, mental, and emotional health effects of aircraft noise exposure have led to the general conclusion that residences near airports are not exposed to high enough sound levels to warrant concern. The principal effect of aircraft noise on airfield neighbors is annoyance, caused by interference with daily activities.

Aircraft Noise Characteristics

Noise intrusion from aircraft activities is perceived as more disturbing than other kinds of noise because of two primary characteristics. Unlike many other community noise sources, such as highway noise, which tend to be fairly constant, aircraft noise consists of sporadic individual noise events with a distinct rise and fall pattern. People do not, in general, respond to these events as just another component of the "background noise" of their day-to-day lives. Some people get used to the noise, but many others feel that each individual flyover event is recognizable and disturbing.

The noise level experienced at a particular dwelling will depend on its location relative to the aircraft flight paths and the mode of ongoing aircraft operations (arrivals or departures). For homes very near the airport, the second quality that makes aircraft noise more intrusive is its higher level, or loudness, than other types of community noise.

Aircraft Sound Spectrum

The noise produced by modern aircraft contains acoustical energy over a wide frequency range. The audible noise includes many sounds from a low-frequency "rumble" to a high-frequency "whine." The exact character depends on the aircraft type and the operation performed (takeoff, landing, or ground run-up). Low-frequency noise (below 500 Hz) penetrates walls, roofs, doors, and windows much more efficiently than does high-frequency noise. Higher frequencies (above 1000 Hz), however, are carried through cracks and vents better. Also, people hear higher frequency sound better, the human ear being more sensitive above 1000 Hz than below.

Since aircraft noise differs somewhat from other types of community noise, it is important to identify the characteristics of the noise that sound insulation is protecting against. Most materials and construction methods are more effective at insulating in one part of the frequency spectrum than in others. Knowing the noise characteristics helps in choosing the

best materials for sound insulation. This Guide has been designed specifically to protect against aircraft noise rather than highway noise or some other problem.

Most of the sound energy from aircraft operations is found at lower frequencies. While this energy is below the most sensitive region of people's hearing range, it can be heard well enough to be annoying and it can cause disturbing structural vibration in a dwelling. Section 2.4 discusses the process by which sound is transmitted into a dwelling interior.

2.3 Sound Insulation to Reduce Noise

Total "soundproofing" of the dwelling, such that aircraft operations are not heard, is usually not practical or cost-effective. The goal for residential sound insulation is to *reduce* the dwelling interior noise levels due to aircraft operations to an acceptable level, that is, a level where it no longer interferes with daily activities.

Interior Noise Objectives

The Federal Aviation Administration (FAA) has established guidelines for the noise level reduction that a home must provide in order to be comfortable in the presence of aircraft noise. The FAA land-use compatibility table recommends that a home exposed to a DNL of 65 to 70 dB should provide at least 25 dB of NLR, and a home exposed to a DNL of 70 to 75 dB should provide at least 30 dB of NLR. The use of other NLR goals may be appropriate in many cases, especially if a noise metric other than DNL is used at that airport.

Room Variations

The noise level of different rooms in a house depends on the absorption within the room, as well as on the noise entering from outside. Upholstered furniture, drapes, and carpeting absorb sound while hard surfaces do not. The exterior sound level is transmitted through the outside walls (depending on their construction) and is further modified by the absorption inside the room (from the various furnishings) to determine what the interior noise level will be.

Expected Dwelling Noise Level Reduction

An acoustically well-insulated home with windows and doors kept closed can provide 30 to 35 dB of NLR whereas more typical, unmodified designs might provide 20 to 25 dB of NLR. Experience has proven that the objectives discussed here are reasonable when construction materials and methods follow the guidelines presented in Sections 3.0, 4.0, and 5.0. Providing more than 40 dB of noise level reduction is not usually practical for a typical residence. Of course, sound insulation will not have any effect on outdoor activities. The advantage of sound insulation is that it provides a refuge from external aircraft noise levels.

In general, it is more efficient and cost effective to take acoustic performance into account at the start when designing and building a home. Remodeling a pre-existing home is far more costly and time consuming than anticipating and building using good sound insulation

techniques. This Guide was developed for new homes; different materials and techniques would be appropriate when renovating houses to achieve the NLR goals.

2.4 Basic Sound Insulation Concepts

Sound Transmission

In order to effectively examine noise control measures for dwellings it is helpful to understand how sound travels from the exterior to the interior of the house. This happens in one of two basic ways: through the solid structural elements and directly through the air. Figure 2-1 illustrates the sound transmission through a wall constructed with a brick exterior, stud framing, interior finish wall, and absorbent material in the cavity.

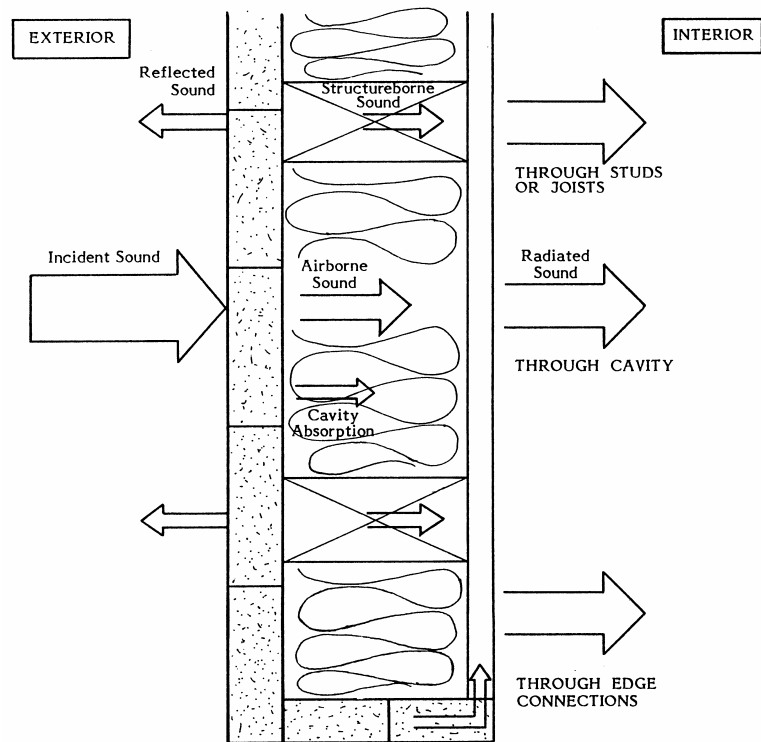


Figure 2-1. Pictorial Representation of Sound Transmission Through Built Construction

The sound transmission starts with noise at the wall exterior. Some of this sound energy will be reflected away and some will make the wall vibrate. The vibrating wall radiates sound into the airspace, which in turn sets the interior finish surface vibrating, with some energy lost in the airspace. This finish surface then radiates sound into the dwelling interior. As the figure shows, some vibrational energy also bypasses the air cavity by traveling through the studs and edge connections.

Openings in the dwelling, which provide air infiltration paths through windows, vents, and leaks, allow sound to travel directly into the interior. This is a very common, and often overlooked, source of noise intrusion. Basically, any way that air enters a home, sound will also enter.

Flanking is a similar concept and usually refers to sound passing around a wall. Examples of common flanking paths include: air ducts, open ceiling or attic plenums, continuous side walls and floors, joist and crawlspaces.

Figure 2-2 displays the three different major paths for noise transmission into a dwelling: air infiltration through gaps and cracks, secondary elements such as windows and doors, and primary building elements such as walls and the roof.

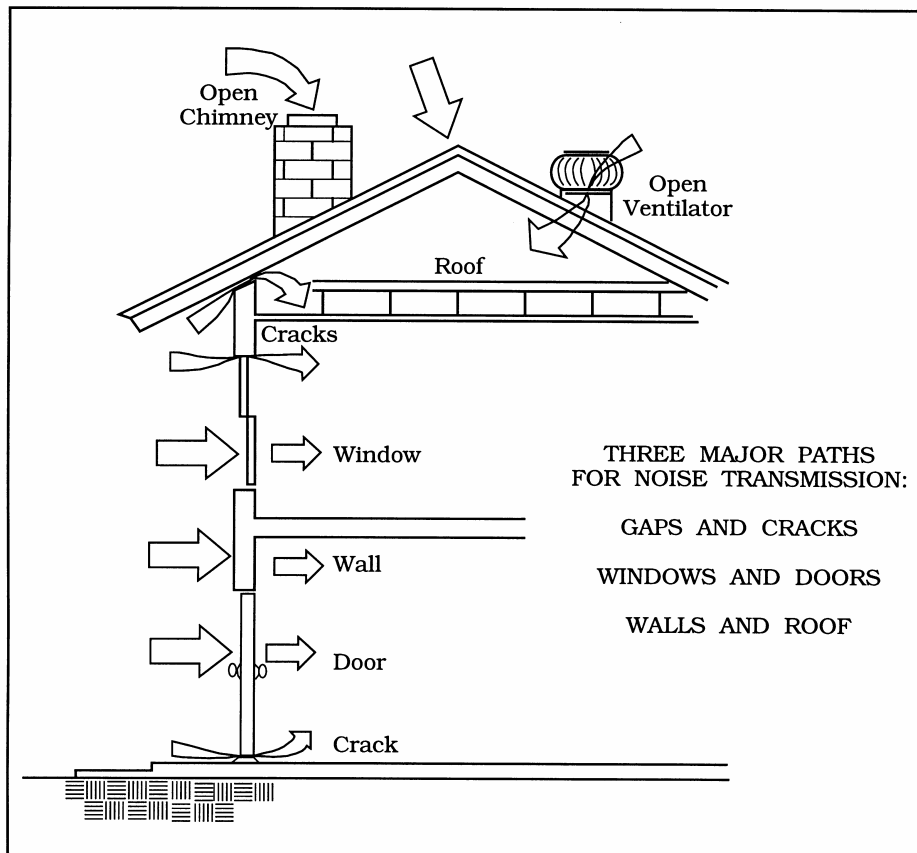


Figure 2-2. Sound Transmission Paths Into Dwelling Interiors

Low-frequency sound is most efficiently transmitted through solid structural elements such as walls, roofs, doors, and windows. High frequencies travel best through the air gaps.

Within these broad categories, different building materials have different responses based on the frequency of the incident sound and varying abilities to insulate against sound.

Reducing Transmitted Sound

The amount of sound energy transmitted through a wall, roof, or floor can be limited in several ways. First, all air infiltration gaps, openings, and possible flanking paths must be eliminated wherever possible. This is the single most important, but occasionally overlooked, step in noise level reduction. This includes keeping windows and doors closed and putting baffles on open-air vents. Some materials reflect more of the incident sound, converting less of it into vibrational energy. The mass of the exterior and interior panels influences how much sound will pass through them. The more mass a structural element has the more energy it takes to set it into vibration, so using heavier building elements generally blocks more noise. Then, absorption in the air cavity, resilient mounting of interior finish panels, and mounting the exterior and interior panels on different studs can further reduce the sound transmitted to the room. The primary approaches for improving sound isolation are:

1. Elimination of openings and flanking paths.
2. Using higher STC windows and doors.
3. Adding mass to walls or ceilings.
4. Isolation of panel elements through increasing their separation, mounting the interior and exterior panels on different studs, or resiliently mounting the interior panels.
5. Adding absorptive materials between the studs or joists.

Acoustical Design

The most important, or controlling, sound paths must be identified in order to know how to modify a dwelling design to meet a specified noise criterion. The ideal sound insulation design would focus on those elements that transmit the most acoustical energy into a room. This eliminates any weak links in the building's insulation envelope.

Windows generally allow more noise intrusion than walls; as more of the wall area is taken up with windows, the overall noise protection decreases. This effect is significant even for massive wall materials, such as brick. Intuition suggests that a brick wall would protect better against sound than siding and this is true when these materials alone are compared. But, putting a weak window or an especially large window into a brick wall will cause the overall construction to perform very poorly since noise enters through the weakest path. On the other hand, installing a high-STC window in a siding wall will give much better noise level reduction than building a weak window into a brick wall.

The STC rating, defined in Section 2.1, is a measure of the material's ability to insulate against sound; the higher the STC rating, the better the insulator. Proper use of STC ratings will be discussed in more detail in Section 3.1. Table 2-1 gives a brief list of typical STC ratings for common building elements. Much of the variability for walls and roofs is due to the type of interior finish, the type of studs or joists, and whether there is insulation in the stud or joist cavities. The ratings in Table 2-1 cannot be used directly to estimate noise

level reduction because they do not account for the presence of other elements or the areas of each element.

In most cases, after making sure that openings remain sealed, the windows are the controlling sound paths. Using acoustical windows typically does more to improve the sound insulation performance than any other design modifications. Exterior doors typically require higher STC ratings. Depending on the NLR goal, other elements may become important in meeting specific noise level reduction goals. In some cases, ceilings and exterior walls may require special construction as well, particularly in the higher DNL noise zones. Treatments for these paths and others are discussed in Sections 3.2 through 3.8 of this Guide.

**Table 2-1.
Typical STC Ratings for Common Construction Elements**

LARGE ELEMENTS	
<u>EXTERIOR WALLS</u>	STC (dB) ¹
Wood Siding	34-39
Stucco	46
Brick	54
<u>ROOFS</u>	
Vented Attic	45
<u>FLOORS</u>	
Slab	60
Vented Crawlspace	48
SMALL ELEMENTS	
<u>WINDOWS</u> ²	
Double-Strength Glazing	24-29
<u>DOORS</u> ²	
Hollow Core (HC) wood	20
Solid Core (SC) wood	23-29
Steel or fiberglass	22-28
Sliding Glass	25-29

¹ A higher STC value indicates greater sound insulation.

² Good weatherstripping condition.

Problem Areas

Sound intrusion problems are commonly caused by:

1. Building construction components and configurations not providing sufficient sound insulation.
2. Building elements, such as windows, doors, walls, roofs, and floors chosen and combined in an unbalanced way so that some parts are much weaker sound insulators than others.

Unintended openings or sound-flanking paths caused by improper installation of construction elements.

Thermal Insulation

While homes that are well insulated thermally often perform well acoustically, thermal insulation is not always a good indicator of sound insulation. Many thermal windows provide little sound insulation when compared to walls or acoustical windows and are frequently the weak link in the building envelope. However, thermal treatments usually eliminate air infiltration and may serve to improve the acoustical performance of a dwelling for that reason. The presence of insulation in walls or ceilings is far more important than the type of the insulation.

Shielding

The last concept to consider is shielding. This refers to the fact that the side of the dwelling that faces away from the flight path and does not have an open line-of-sight to it will be protected somewhat from the noise. The shielding may be as much as 10 dB in some cases, though values on the order of 5 dB are more common. Sides of the house facing directly toward the flight path are unshielded. Sides that face the flight track at an angle may benefit from some minor shielding effects. Sometimes, however, *sound is reflected off nearby buildings and may counteract the shielding benefits*. Shielding must be examined on a case-by-case basis and the possibility of aircraft straying from the usual flight path must be taken into account before assuming a consistent shielding effect.

In general, a new dwelling should be oriented on the lot so that bedrooms and TV-viewing rooms face away from the flight track. This will eliminate the need to add extra sound insulation components to protect these noise-sensitive living areas.

3.0 Building Elements

This section provides specific guidelines for modifying standard construction designs and practices to meet the need for aircraft sound insulation in new homes. A general discussion of construction materials and methods is given in Section 3.1. Sections 3.2 through 3.8 address techniques for use with weatherstripping, windows, doors, walls and ceilings, attics, floors, HVAC systems, and other miscellaneous elements.

3.1 Evaluating Construction Materials and Methods

Informed Use of STC Ratings

STC ratings are the most common measures of acoustical performance given by manufacturers of building materials. For this reason, it is important to understand how to use STC ratings to evaluate construction materials and systems.

Two different construction methods or components may have identical STC ratings and yet may block aircraft noise differently because of their response at different frequencies. One method or component may perform better than another at some important frequencies. Selecting a construction method or component from a group only on the basis of the highest STC rating may not provide the intended sound insulation. This is because the STC rating does not take into account the strong low-frequency nature of aircraft noise. This guide has taken the ability of typical products to block aircraft noise into account. The recommended materials listed in Sections 4.0 and 5.0 (and their STC ratings) were evaluated for frequency response prior to formulating the design packages.

Combining Building Elements

As mentioned earlier, the acoustical performance of the building depends on the combined performances of each of the elements. The final result depends on the transmission loss (or STC) and the relative surface areas of the elements. If any of the components has poor insulation properties the overall performance can be seriously weakened. This is why it is important to focus on the weaker elements and to consider the relative areas of the components.

As a rule-of-thumb, if a weaker element will be included in the assembly, its size should be kept to a minimum. For example, if a pane of glass is to be used for a vision panel in a door, it should be kept small and should be constructed of insulated glazing. Similarly, very large windows degrade the noise level reduction of an otherwise effective brick wall. If a cathedral ceiling is included, it should be designed so that there is a larger-than-standard air space between the ceiling and the roofing system, and this space must be insulated. In addition, slightly higher STC ratings should be used for windows and doors than indicated in Sections 4.0 and 5.0. Sensible compromises can be made to preserve the noise level

reduction of the home without sacrificing aesthetics, provided the principles explained in this Guide are employed.

3.2 Sealing and Weatherstripping

Good weatherstripping and caulking around windows and doors is crucial to effective sound insulation. The STC rating of the overall assembly can vary by as much as 2 to 4 dB, depending on perimeter infiltration. For these assemblies, any perimeter leakage will degrade the performance of the window or door and can be the controlling factor in the noise isolation. This is generally not an issue with new construction, but homeowners must understand the importance of maintaining weatherstripping in good condition.

For acoustical purposes, compressible neoprene weatherstripping is preferred over felt or other fibrous types. Neoprene is not as porous and compresses better against the window or doorframe. Also, felt and fibrous weatherstripping materials tend to deteriorate more quickly than neoprene and must be replaced more often.

3.3 Windows

Options Overview

The exterior windows are usually one of the weakest elements in the dwelling's sound insulation performance. Improving the acoustical properties of the windows is one of the simplest ways of lowering the overall sound transmission into the house. Design modification options include using thicker glass and wider airspaces between the panes of glass. Specialized acoustical windows provide maximum sound insulation, and should be used in the loudest environments, as specified in Sections 4.0 and 5.0.

Acoustical Performance

The thicker, high-quality insulated glass units should be $\frac{3}{4}$ inch to 1 inch thick and, for the best noise level reduction, should incorporate at least one lite (pane) of laminated glass, preferably $\frac{1}{4}$ inch thick. Laminated glass provides significantly better transmission loss than standard, float glass. Tempered glass is also acoustically superior to standard glass, but is not nearly as effective as laminated glass. Off-the-shelf thermopane units are typically available with ratings ranging from STC 24 to 29, and upgraded acoustical units with thicker glass may provide ratings as high as STC 30 to 36. Figure 3-1 shows a typical window installation with the most important features highlighted.

Acoustical windows differ significantly from ordinary residential windows. The design of an acoustical window has a greater frame depth, the glass lites are heavier, and the weatherstripping and seals are more substantial. Most importantly, they have additional lites. The two most common types of acoustical windows are a double pane window with a storm unit attached, or an assembly of two double pane windows connected together. All of these measures are necessary to provide the high degree of sound insulation required for the window assembly. Figure 3-2 shows schematically the features of an acoustical window.

Proprietary windows with STC ratings of 39 to 48 are available in a variety of styles and finishes, including aluminum and vinyl. Information on specialized acoustical windows is available in Appendix A. They are considerably more expensive than typical residential windows.

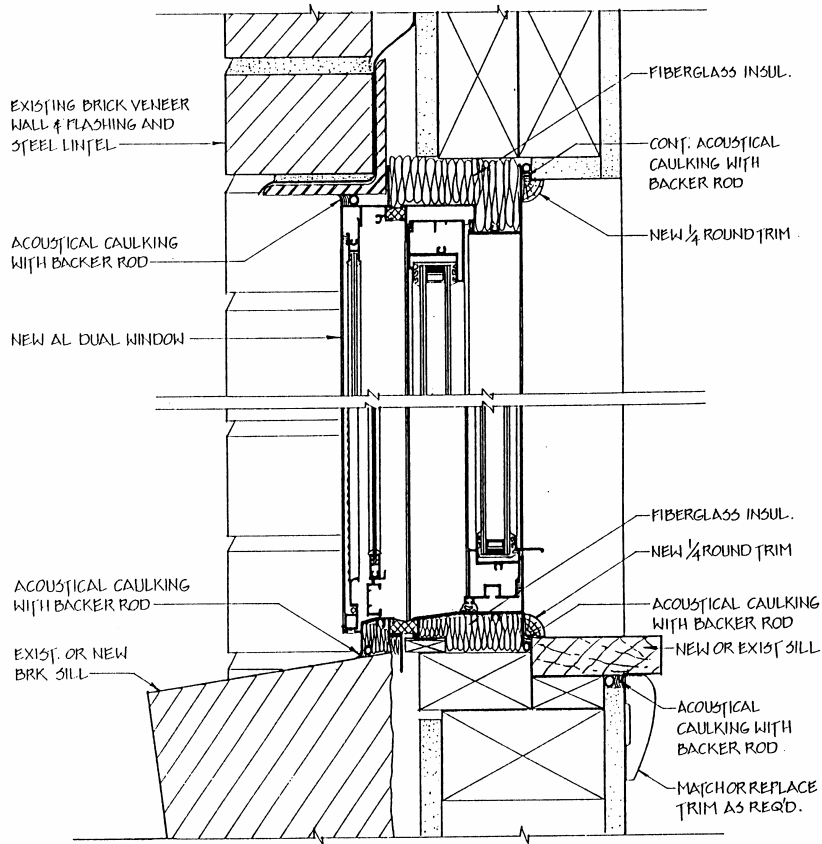


Figure 3-1. Typical Aluminum Dual Window Detail

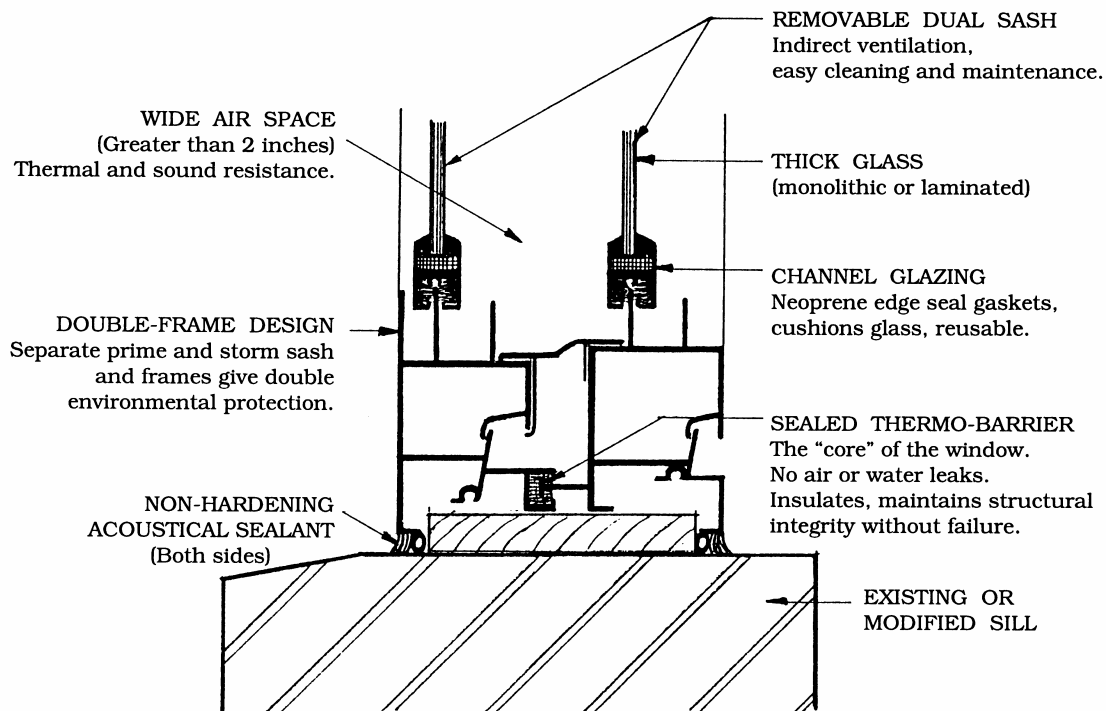


Figure 3-2. Construction Features of Acoustical Window

Thermal Performance

Insulated glass windows are recognized to block the transmission of heat (in winter or summer) much more effectively than single pane glazing. Increasing the thickness of the glass and the airspace, as recommended for noise level reduction, further improves their thermal performance.

Because of the above-mentioned design features, plus the common inclusion of thermal barriers at the frames, acoustical windows perform exceptionally well as thermal barriers. They allow approximately one-tenth the air infiltration of a typical 20-year-old double-hung wood window with single pane glass. The R-value (a measure of thermal resistance) for acoustical windows is R-4. For comparison, the R-values of most off-the-shelf single pane and double pane windows are R-1 and R-3, respectively.

Installation Considerations

For the windows to provide the required noise reduction they must remain tightly closed. Ways to maintain ventilation will be discussed in Section 3.8. It is important to note, however, that this requirement precludes the use of jalousie or louvered windows in a sound insulation design. Double-hung, single-hung, horizontal sliding, casement, fixed, and awning/hopper windows are all acceptable for noise reduction, provided they have the required STC rating.

Other considerations when preparing window specifications include maintainability, warranty, manufacturer's service, and proper installation. It is possible to install the best

acoustical window improperly. If it does not fit tightly enough, air infiltration will significantly reduce the effectiveness. Starting with a too-small window unit and filling in the void around the window with a low-mass material such as fiberglass is unacceptable. Continuous wood blocking infill is, however, acceptable.

3.4 Doors

Options Overview

Doors are comparable to windows in the amount of sound they allow to enter the dwelling. Many typical residential doors require modification or substitution to provide the necessary protection from aircraft noise. As with windows, there are specialized acoustical units available, as well as acoustical storm doors. The following factors are important in evaluating doors for sound insulation:

- Door composition: hollow core wood, solid core wood, insulated metal or fiberglass, sliding glass; core material, additional internal insulation, etc.
- Door weight (can be estimated by pull-weight).
- Presence and type of fixed window panels.
- Quality of seals and weatherstripping and how tightly they seal.

The options for improving the noise level reduction of residential doors include:

- Installation of a tightly fitting storm door with thick (or laminated) glass; or use of a specialty acoustical storm door.
- Installation of a secondary French door.
- Use of thicker glass in sliding glass doors or specialty acoustical sliding glass doors.

Standard Doors

Standard entrance doors can be expected to have ratings of STC 21 to 27. STC requirements are outlined in Sections 4.0 and 5.0 for each type of door (swinging and sliding doors).

Glass panels in the primary door can reduce the sound insulation by 3 to 5 dB, depending on the thickness of the lite and the surface area. The thinner the glass and the larger the area it covers, the more it decreases the sound insulation of the door. When vision panels are required, it is best to keep them small and use insulated glass units with thick glass.

Swinging Storm Doors

External storm doors are common in many parts of the country and can improve the STC rating by 3 to 10 dB. In order for storm doors to be effective for sound insulation, they should incorporate thick glass (ideally 1/4-inch-thick laminated glass) and have a heavy core. Storm doors must be mounted year-round. Replacing the glass panel with a screen

insert in the summer months will reduce the sound insulation of the home considerably but many homeowners may wish to exercise this option for periods when aircraft activity is light. A list of acoustical storm door suppliers is included in Appendix B.

Acoustical Swinging Doors

Acoustical doors, with a typical rating of STC 30 to 40, are similar in appearance to standard entrance doors. However, due to the high cost of acoustical doors, it is often preferable instead to use more typical residential doors with acoustical storm doors.

Because of their specialized construction and superior sealing design they provide a very noticeable improvement in noise reduction. While metal doors are available, wood doors are preferred by most homeowners since they are more like standard doors. Whether metal or wood, the internal construction of acoustical doors differs substantially from standard doors. Layering of materials, along with added absorption and mass, increases their weight to approximately 12 to 14 lbs per square foot.

To eliminate sound flanking between the closed door and the jamb, acoustic doors are designed with special fixed acoustical seals at the sides and top. A drop seal along the bottom activated by a cam rod when the door is closed is sometimes used to make tight contact with the threshold. In other cases, fixed bottom seals that contact a raised threshold or saddle are used. Also, because of their extra weight, acoustical doors usually require reinforcement of the door frame and heavy-duty mounting hardware and ball-bearing hinges. Manufacturers often provide customized frames with their acoustical doors.

Sliding Glass Doors

There are two options for improving the sound-insulating properties of sliding glass doors: using acoustical units, or using primary and secondary doors. The disadvantages of acoustical sliding glass doors are that they are very expensive, very heavy, and can have a high threshold. The disadvantages of using primary and secondary sliding glass doors have to open two doors to leave the building, and that the two frames would not fit in the width of a typical 2x4 stud wall. This same secondary door concept can be used with French doors. Of course, the installer must ensure that there is no conflict in the operation and opening hardware of the two door sets. Good weatherstripping should be installed on both doors.

Installing a secondary door generally requires building a second frame positioned to mount the door approximately 2 to 3 inches away from the primary door. This dual-door assembly has proven successful in that it raises the STC rating by 5 to 7 dB. Figure 3-3 shows a system of two sliding glass doors with the secondary door mounted outside of the typical door position.

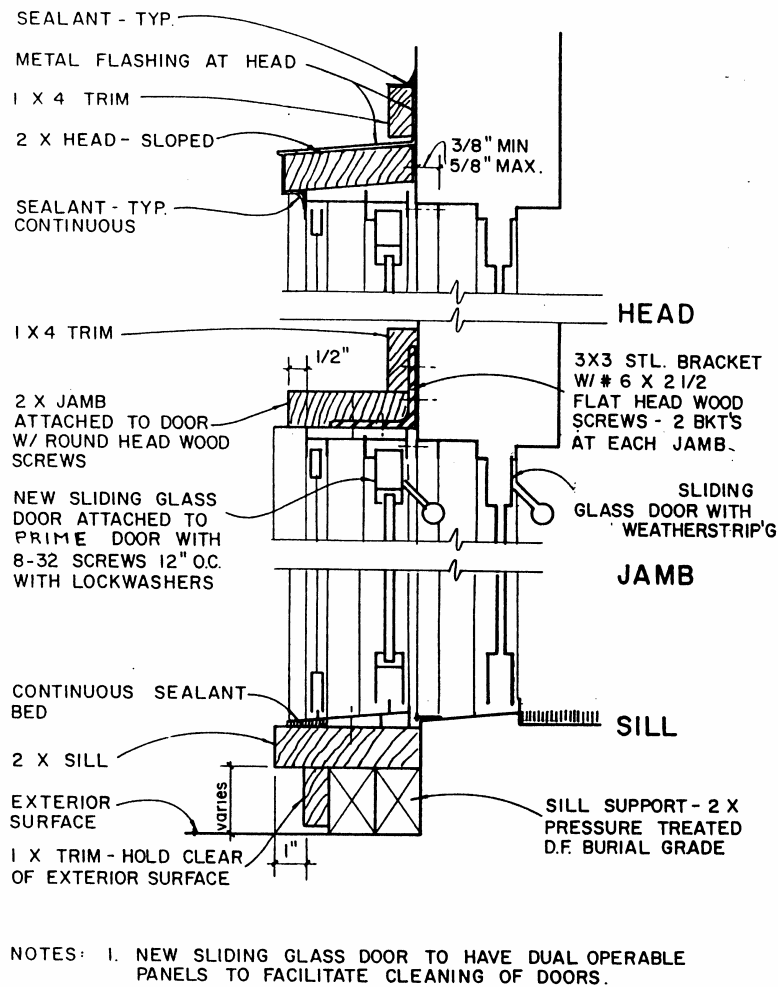


Figure 3-3. Sliding Glass Door Detail

Installation Considerations

As with windows, it is of critical importance to ensure that the door fits well, that all gaps and leaks are sealed, and that the door remains closed. High-quality weatherstripping is recommended to ensure the noise reduction of the door. Sound attenuation through standard doors can be improved by fitting them with special acoustical seals, including drop seals mounted to the back or fully mortised in the door's bottom rail. If the door does not fit squarely into the frame it will not seal properly and unnecessary noise infiltration will result. In all cases, avoid openings such as mail slots in doors or the use of pet doors.

3.5 Walls and Ceilings

Determining Wall and Ceiling Designs

Depending on the dwelling's exterior construction and materials, it may be necessary to use specialized designs for walls. Generally, dwellings that are of vinyl, aluminum, or wood siding exterior construction require improvements such as staggered studs or resilient

channels in the highest noise impact zones. Dwellings which use brick, stucco, concrete masonry block, and other cementitious materials typically do not.

For the purposes of this design guide, the following material definitions can be assumed:

- Brick or Brick Veneer Construction: At least 4½-inch-thick brick veneer over 7/16" OSB sheathing on 2x4 studs 16 "O.C. with at least R-11 batt insulation, and 1/2" gypsumboard at interior. The entire exterior wall is constructed of brick.
- Stucco Construction: 7/8-inch stucco over paper over 7/16" OSB sheathing on 2x4 studs 16 "O.C. with at least R-11 batt insulation, and 1/2" gypsumboard at interior. Entire exterior wall is stucco, not partial siding or other material.
- Siding Construction: All types of siding including wood, MDF, aluminum, or vinyl. Construction includes siding on insulation board (e.g., Thermoply) or 7/16" OSB sheathing on 2x4 studs 16 "O.C. with at least R-11 batt insulation, and 1/2" gypsumboard at interior.

Many buildings combine siding with other exterior construction materials such as brick, brick veneer, stone, or stucco. For the purposes of this Guide, the siding and siding-combination constructions are taken to have approximately the same sound insulation performance. Because noise penetrates through the weakest available element, unless the siding area is very limited, noise will penetrate through that part of the building envelope. Generally, if a particular wall is shielded from the flight track or is protected by a heavily roofed porch, the need for supplementary wall treatments is reduced.

Improved ceilings are sometimes necessary where there is an attic over habitable or noise-sensitive rooms such as bedrooms, living rooms, family rooms, etc. There is no need to modify the ceiling of any first-floor rooms where they are completely covered by a second story room. Non-habitable rooms, such as garages and mudrooms in breezeways, are generally not given improved ceilings unless they open directly to habitable rooms without interior doors in between the rooms.

Specific Interior Wall Designs

One technique for increasing the mass and resiliency of the wall or ceiling is to attach the gypsumboard to the studs with 1/2-inch, resilient, vibration-isolation channels ("resilient channels", or "RC"). This will provide an STC rating improvement of 7 dB over that for a typical wood frame/wallboard structure. The resilient-mounting channels should be attached to the studs so that they run horizontally for walls and perpendicular to the joists for ceilings. This minimizes the vibration transmission from the supporting studs to the channels and the wallboard. The screws used to attach the gypsum board to the channels must be short enough that they do not contact the studs. The common installation error of using too long screws allows vibration to travel from the stud to the gypsumboard, rendering the system ineffective.

A second technique involves using the resilient channels mentioned above, and changing the wall construction from 2 x 4 studs to 2 x 6 studs. This will increase the STC by 11 dB over the standard wall construction, and will allow space for R-19 insulation. However, this does involve changes to the framing design of the dwelling, and may not be desirable in some cases.

The third, and most effective, option is to construct the interior wall on a set of staggered studs so that the interior and exterior finish surfaces are not rigidly connected to each other except through the top and bottom plates. This system uses two rows of studs: one row of studs spaced 16" on center supporting the sheathing, and a second row spaced 16" on center supporting the interior wall finish. The end result is that there are studs each 8" on center. Figure 3-4 shows how to implement this construction. This modification provides acoustical decoupling and separation between the exterior and the interior of the room, resulting in a 13 dB increase in the STC rating over standard construction methods. A larger space between the interior and exterior panels will yield a greater STC improvement. Likewise, a greater spacing (24") between studs will provide a higher STC rating.

Two other options are presented in Table 3-1. Since these two options each provide the same STC rating as the staggered stud option discussed in the paragraph above they are listed as alternatives to it. They utilize different construction modifications such as double-layers of 1/2" gypsumboard (both of which are screwed into the studs), and the addition of 1" of rigid insulation on the exterior side.

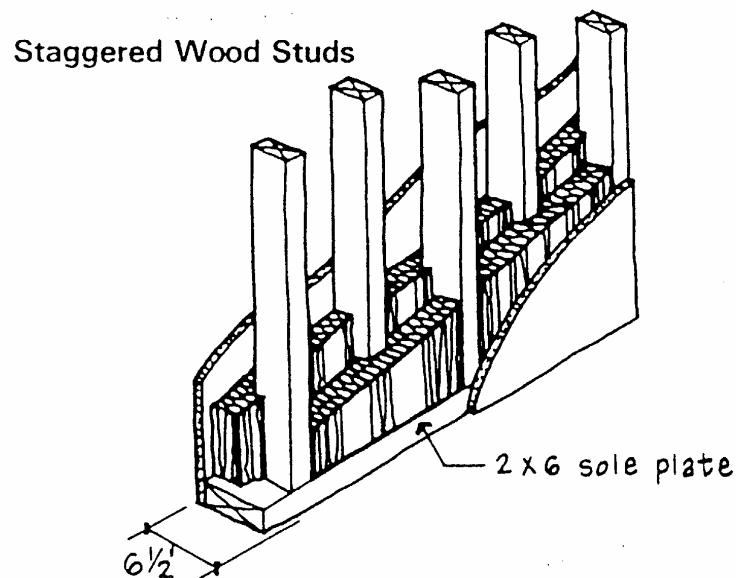


Figure 3-4. Staggered Wood Stud Construction

Table 3-1. Wall Designs and STC Ratings

Label	Exterior Side	Studs	Interior Side	STC Rating
2x4 studs	Siding, 7/16" OSB sheathing	2x4 16" O.C. with batt insulation	1 layer 1/2" gypsumboard	36
Resilient Channel on 2x4 studs	Siding, 7/16" OSB sheathing	2x4 16" O.C. with batt insulation	RC on studs, 1 layer 1/2" gypsumboard	43
Resilient Channel on 2x6 studs	Siding, 7/16" OSB sheathing	2x6 16" O.C. with batt insulation	RC on studs, 1 layer 1/2" gypsumboard	47
Staggered 2x4 on 2x6 base	Siding, 7/16" OSB sheathing	2x4 16" O.C. for each row (staggered on 2x6 base plate) with batt insulation	1 layer 1/2" gypsumboard (attached only to interior-side studs)	49
Alternate to Staggered 2x4	Siding, 7/16" OSB sheathing	2x6 16" O.C. with batt insulation	RC on studs, 2 layers 1/2" gypsumboard	49
Alternate to Staggered 2x4	Siding, 1" rigid insulation, 7/16" OSB sheathing	2x4 16" O.C. with batt insulation	RC on studs, 2 layers 1/2" gypsumboard	49

To absorb sound, fiberglass batts are placed between the studs in the wall cavity. Thermal insulation of at least R-11 should be used to ensure a thick enough layer. Batts or blankets should be held firmly in place between studs, with fasteners if necessary, to prevent sagging; however, packing the insulation such that it is compressed may slightly *reduce* its acoustical (and thermal) performance. Blown-in insulation is not recommended in walls for acoustical purposes because of the tendency to compact over time.

Specific Interior Ceiling Modifications

The ceilings of top-floor rooms may need to be modified to provide increased noise protection. Some of the same methods that are used in wall constructions can be used for ceilings. The standard roof construction is assumed to be: asphalt shingles, 7/16" OSB sheathing, wood trusses, batt insulation, and 1/2" gypsumboard on the interior ceiling. This design has an STC 50 rating.

Section 4.0 references a design with resilient channels mounted perpendicular to the ceiling joists, on the bottom of the joists, with one layer of 1/2" gypsumboard attached to the channels. The addition of resilient channels to the ceiling assembly will increase the rating to approximately STC 56.

3.6 Attics and Roofs

Options Overview

Home designs incorporating unoccupied attic space over all living areas are recommended for dwellings exposed to aircraft noise. Skylights can be used if 1/4-inch-thick glazing or insulated thermopane glass is used at the bottom of the skylight well to supplement whatever glazing is used at the top of the well. In addition to these basic rules, it may be necessary to use improved roof, attic, or ceiling designs. Improvements could include baffles in the attic vents, extra insulation to absorb sound reverberating in the attic space, and an upgraded roof deck.

The use of cathedral ceilings is strongly discouraged for homes exposed to aircraft noise, particularly where the necessary NLR is 30 dB or higher. Rather than a true open-beam or cathedral ceiling, a mock-cathedral or vaulted ceiling with a small attic space above is recommended. Open-beam ceilings should never be used when the necessary NLR is 25 dB or higher.

Sound Transmission Paths

Sound enters through the roof in two paths: directly through vents and other leaks; and by vibrating the roof itself, thereby radiating acoustical energy into the air within the attic. If there is no attic the sound passes immediately into the living space under the roof. This is why homes with open-beam or cathedral ceilings often have very limited noise level reduction through the roof. Where there is an attic, the sound enters and reflects off of the attic surfaces, reverberating in the space. Since much of the sound energy has been dissipated, less sound passes through the finished ceiling to the room below.

Attic Vents

Attics typically have open-air vents at the ends (for a gabled roof) or under the eaves. The sound entering through these vents may be significant. Off-the-shelf acoustical louvers can be applied to baffle the sound passing through such openings. Most off-the-shelf noise control baffles are rectangular and this requires the use of rectangular vents in the dwelling design. Soffit vents under the eaves can be left unmodified when other measures are implemented, since they are somewhat shielded from direct exposure to the aircraft noise.

Any type of attic vent that opens directly through the roof toward the aircraft flight tracks is strongly discouraged. This includes gravity vents, ridge vents, and some active or positive ventilation systems. If these vents are used, built-in-place baffles can be used under them to reduce noise intrusion. Built-in-place baffles consist of pieces of 3/4" thick plywood covered with 1" thick rigid fiberglass insulation; the plywood panels are oriented in such a way that noise (and air) must be reflected on at least one fiberglass-lined surface before it can move into the attic. In general, acoustical louvers are preferred over built-in-place

baffles due to the possibility that the built-in-place baffles may reduce ventilation through the attic. Figure 3-5 shows a typical built-in-place gable vent baffle design.

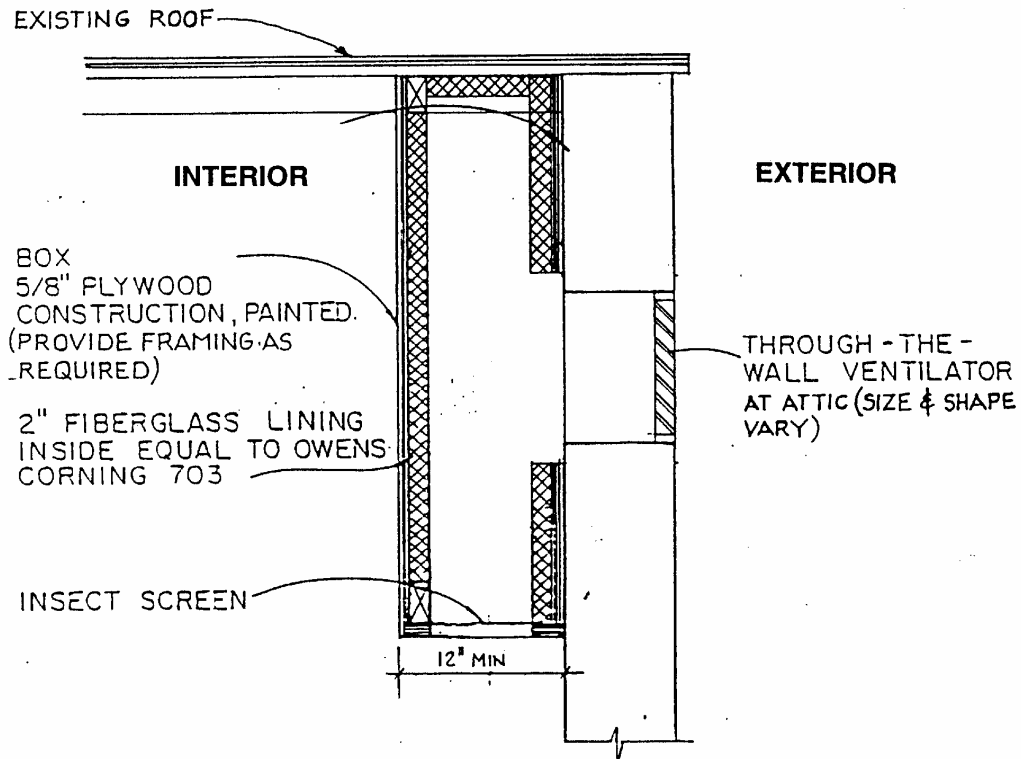


Figure 3-5. Built-in-place Gable Baffle

Attic Insulation

When considering the upgrade of thermal insulation to reduce noise levels it is important to understand what the insulation will do. Thermal insulation materials will act to absorb sound that is reverberating in the attic or in the space between flat panels. It does not prevent noise from entering the space. That is, it has no appreciable acoustic "insulating" properties but acts as an absorbent instead. To keep sound out, barriers must be used which increase the mass of the roof or ceiling. As a sound absorbent, fiberglass batts and blown-in fiberglass or mineral fiber can be applied between the rafters, between the ceiling joists, or in conjunction with a plywood or gypsumboard barrier. Blown-in cellulose is not recommended since it compacts over time, reducing its effectiveness.

The absorption of a material should not be confused with noise level reduction (NLR). There is no direct relationship between a material's absorptive properties and the overall NLR.

A simple method for determining the proper thickness of sound-absorbent materials is to use the concept of the material's thermal rating (R-value). This R-rating is a commonly used and well-known rating for building products. The R-values and thickness for several common insulation materials are given in Table 3-2. The value of the sound absorption at

lower frequencies depends on the thickness of the material. For noise sources with a significant low-frequency component, such as aircraft flyovers, the thickness is the most important parameter. Thicker materials provide better low-frequency sound absorption.

Table 3-2.
Material Thickness and R-Value
For Common Insulating Materials

Material	Thickness, Inches		
	R-11	R-19	R-30
Roll or Batt Fiberglass (Vapor Barrier on One Side)	3.5	5.25	9
Blown-In Fiberglass	5	8	13

3.7 Floors and Crawl Spaces

Options Overview

Dwellings in Boise will usually have one of these two types of floor systems at the ground level:

- Concrete slab
- Crawl space

Since noise control measures are concerned with the external building envelope, floors between stories in a home are not addressed.

There are three stages of floor design improvements for sound insulation:

- Eliminating, sealing or baffling any openings.
- Installing insulation between the floor joists.
- Attaching a barrier panel to the underside of the floor joists or between the perimeter of the house and the ground (a skirt).

Concrete slabs require no treatment. Crawl spaces will be discussed below.

Crawl Spaces

One common floor system for new residences consists of wood plank and beam construction over a vented crawl space. Using insulation batts between joists is also very effective acoustically. The simplest way to improve the acoustical performance of a house that has a crawl space with masonry walls is to install off-the-shelf noise control louvers to the under-floor vents (see Appendix B); this is similar to the design discussed above for roof vents.

These louvers provide a noticeable quieting in the rest of the house. If crawl spaces do not have masonry walls, a massive barrier panel can be used as a skirt connecting the bottom of the walls to the ground. 2" thick precast concrete panels would be ideal. Alternatively, 2x4 pressure-treated wood studs with ¾" pressure-treated plywood on each side could be used, as long as the joints between the plywood are covered with batten strips.

3.8 Mechanical Systems and Building Penetrations

In order to maintain the noise reduction benefits of improving windows and doors and sealing leakage paths, it is important to keep these openings closed. While an acoustically well-insulated home can provide 30 to 35 dB of noise reduction, this figure drops to 15 dB whenever the windows and doors are open. Heating, ventilation, and air-conditioning (HVAC) systems do not directly affect the sound insulation performance, but they enable residents to keep the windows and doors shut year-round and benefit from the sound insulation modifications. The following information is not referenced in Sections 4.0 and 5.0 but the ventilation features discussed here are strongly recommended.

Fresh Air

New homes in Boise will most likely have central air-conditioning. Whether the air needs to be heated, cooled, dehumidified, or simply circulated and replenished depends on the season. Refreshing the air supply and moving it around is important for health and comfort no matter what the outside temperature. A fresh-air intake could be installed on an air-handling system to provide the required percentage of fresh makeup air combined with the recirculating air. However, when the system is not operating during mild weather no fresh air would be provided. Therefore, the system must, at a minimum, have a fresh-air intake and allow for ventilation alone when the residents do not want heating or cooling.

In order to ensure that fresh air is provided year-round, the preferred solution is to use active ventilators. Also, in cold climates we recommend using energy recovery ventilators (ERV) to minimize heat loss in winter. These devices are similar to heat recovery ventilators (HRV), except they exchange moisture as well as heat. An ERV system has four ducts: (1) a fresh air intake duct connecting the outdoors to a fan unit, (2) a fresh air supply duct connecting the fan unit to habitable areas of the home (typically connected to a central forced air duct system), (3) an exhaust air duct connecting bathrooms and/or kitchens to the fan unit, and (4) an exhaust duct connecting the fan unit to the outdoors.

The licensed professional designing the mechanical system must ensure that the building code requirements for fresh airflow volume are met.

Whatever ventilation system is used, penetrations of the building envelope must be minimized and located as far as possible from habitable areas of the house.

Combustion Air

All gas-fired furnaces and other combustion devices need oxygen to operate. If there is insufficient oxygen present harmful chemicals may be created. In order to prevent this, the

building code sets forth requirements for airflow near combustion sources. The requirements are mostly related to how enclosed the furnace area is. When sound insulating a house against aircraft noise, the rate of air infiltration is reduced. This is beneficial in terms of energy consumption, but may adversely affect the presence of fresh air, as noted above. To compensate for this reduced air infiltration in the area of the furnace, it is recommended to provide a combustion air fan. This is a small fan that blows air to the furnace area.

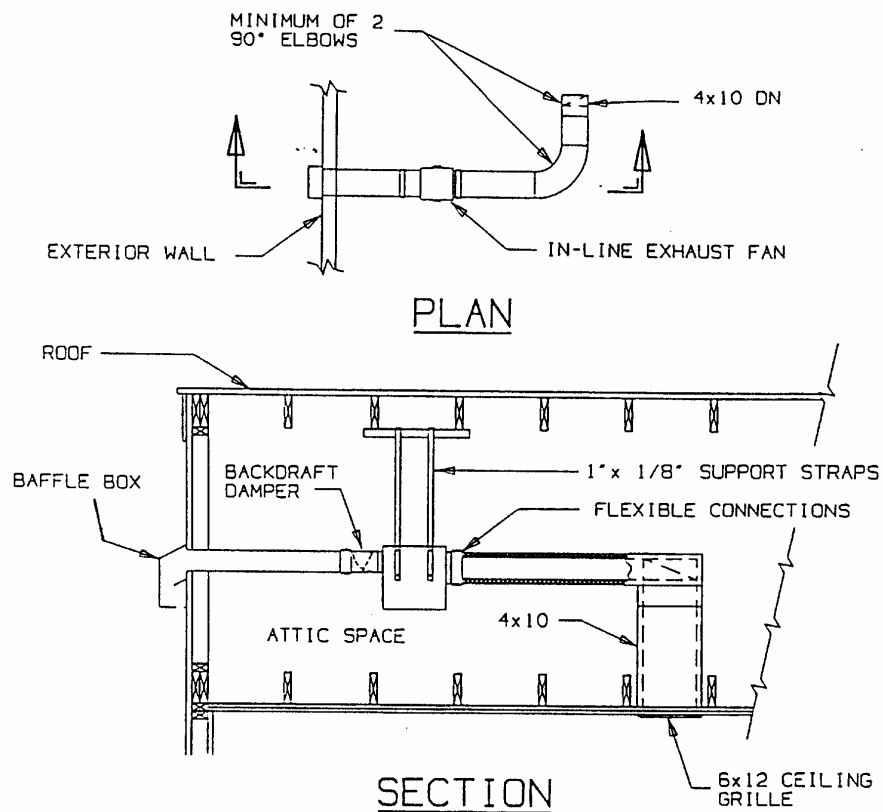
Noise and Vibration Control

It is important to limit the amount of noise the HVAC system generates and the noise it carries in from the outside. Taking the steps outlined below will help to minimize the noise from fans, airflow, equipment vibration, and aircraft noise sources:

- Provide vibration isolation mounting for all equipment and locate the equipment far from noise-sensitive rooms so that the structure-borne sound and vibration are kept to a minimum.
- Use ducting materials appropriate to the location to minimize the sound transmitted through the system. Flexible ductwork should not be used in attics and crawl spaces; heavier sheet metal ducts will provide better sound insulation.
- Ducts to the outside, whether intake or exhaust, and all ducts in the attic or crawl space can be lined with 1-inch acoustical internal lining material, or have at least two 90-degree (right angle) elbows (turns) thereby breaking the line-of-sight to the outside as shown in Figure 3-6. It must be noted that there is concern that this fibrous acoustical lining material will affect air quality. Installing a duct sound attenuator (silencer) is an alternative to this technique; there are silencers available that do not contain fibrous lining. To prevent moisture and grease buildup exhaust fans (bathroom, dryer, kitchen, and range) must not have internal sound lining or silencers that use fibrous lining; the use of the 90-degree elbows and/or fiber-free silencers are appropriate in these cases. These measures ensure that the ventilation system is not bringing additional aircraft noise into the house.
- Do not use in-window, through-wall, or through-floor air-conditioners, ventilators, or heaters, i.e., units for which air ducts pass through the building envelope (windows, walls, or floors). On the other hand it is acceptable if only natural gas or refrigerant pipes pass through the building envelope, since these will not allow noise to enter the building. The preferred air-conditioning system is a split system utilizing an outdoor condensing unit.

Kitchen and Bath Fans

Most kitchen and bathroom designs for new homes already incorporate fans for ventilation purposes. If the kitchen and bathroom exhaust ventilators have ducts to the outside, they should be ducted through the attic as opposed to through a wall. A ducting scheme that incorporates at least one and preferably two right-angle turns is effective at reducing noise infiltration and there should be no direct line-of-sight through the duct from the outside to the inside. In other words, if the duct grilles or covers were removed, it should not be possible to see daylight through the duct. All ducts in the attic should be rigid metal and not flexible; noise may pass through these elements to other rooms of the house. Ideally, the vents will be on the side of the roof facing away from the flight path.



ALL DUCTWORK BETWEEN THE CEILING GRILLE AND THE EXHAUST FAN SHALL BE ACOUSTICALLY LINED.

Figure 3-6. Controlling Noise Entering Through Ducts in Attic Space

Fireplaces

Frequently, homes with fireplaces will require some of design modifications. This is especially true if the outside noise exposure is high, or the fireplace is in a room used for watching TV or sleeping. The treatment package consists of two parts: First, glass doors are mounted at the front of the fireplace. Second, the in-chimney damper must be installed so that all edges seal around the damper. Any air gaps or leaks will allow sound to pass through. The glass doors by themselves provide a noticeable improvement and these two treatments, in combination, have proven to be very effective at reducing the noise entering along this path. Chimney-top dampers have also been used successfully when tightly installed.

4.0 New Construction: Material Selection Chart

The following selection chart is to be used to determine the acoustical design needs of each noise-sensitive room of a dwelling. For each room, design recommendations are determined by following the chart from left to right. First, the required noise level reduction (NLR) must be determined for the dwelling based on its location in a certain noise contour zone. Second, the number of exterior walls of a room must be selected. Third, the total exterior façade area (including the gross wall/window/door area) of the room must be calculated, and classified as "typical" or "large" according to the requirements shown in the chart. The last four columns contain the minimum STC ratings of walls, windows, doors (of all types), and ceilings that must be used to achieve the desired noise level reduction.

See Table 2-1 and Section 3.5 for STC ratings of walls and ceilings. STC ratings for typical doors and windows are presented in Table 2-1.

Table 4-1. Material Selection Chart and Corresponding STC Ratings

NLR	Number of Exterior Walls	Room Exterior Wall Area (sq. ft.)	Minimum Recommended STC Rating			
			Wall	Window	Door	Ceiling*
25	1	Large (> 170)	36	33	24	50
		Typical (< 170)	36	27	24	50
	2	Large (> 300)	36	33	24	50
		Typical (< 300)	36	33	24	50
30	1	Large (> 170)	43	33	26	50
		Typical (< 170)	36	33	26	50
	2	Large (> 300)	43	40	33	56
		Typical (< 300)	43	33	26	50
35	1	Large (> 170)	47	40	38	50
		Typical (< 170)	43	40	38	50
	2	Large (> 300)	49	44	38	56
		Typical (< 300)	47	40	38	50

* For rooms located on the top floor ONLY (with attic above).

4.1 Limitations

There are many variables affecting the acoustical performance of a room. The recommendations contained in this Guide are based on assumptions of typical parameters. If the actual building design and construction used don't match these assumptions the noise level reduction will be different. Due to the interrelationship between each of these variables there are no upper limits on individual parameters.

In developing recommendations, eight typical types of rooms were considered. Typical floor plans for new dwellings for single-family homes, townhomes, and condominiums have been used. They included:

1. Single-family home living room with 2 exterior walls with a gross area of 221 square feet (sq. ft.), window area of 50 sq. ft., and a floor area of 225 sq. ft.
2. Townhome living room with 1 exterior wall with a gross area of 171 sq. ft., window area of 47 sq. ft., door area of 21 sq. ft., and floor area of 456 sq. ft.
3. Condominium living room with 1 exterior wall with a gross area of 76 sq. ft., window area of 19 sq. ft., door area of 21 sq. ft., and floor area of 234 sq. ft.
4. Single-family home family room with 2 exterior walls with a gross area of 385 sq. ft., window area of 74 sq. ft., door area of 41 sq. ft. and a floor and ceiling area of 300 sq. ft.
5. Single-family home typical bedroom with 2 exterior walls with a gross area of 192 sq. ft., window area of 30 sq. ft., and a floor and ceiling area of 144 sq. ft.
6. Townhome typical bedroom with 1 exterior wall with a gross area of 76 sq. ft., window area of 30 sq. ft., and a floor and ceiling area of 90 sq. ft.
7. Condominium typical bedroom with 1 exterior wall with a gross area of 88 sq. ft., window area of 36 sq. ft., and a floor and ceiling area of 132 sq. ft.
8. Single-family home master bedroom with 2 exterior walls with a gross area of 372 sq. ft., window area of 79 sq. ft., and a floor and ceiling area of 451 sq. ft.

Conditions that would tend to reduce the acoustical performance include:

1. Using a greater area of windows or doors.
2. Having a greater area of exterior walls.
3. Using *smaller* rooms.
4. Adding wall penetrations such as through-wall air-conditioners, heaters, or fans.
5. Using hard room finishes such as ceramic tile or wood floors, and using few furnishings.

5.0 Existing Construction: Sound Insulation Renovation

In addition to designing new residences for sound insulation, existing structures may also be sound insulated via architectural renovation. Renovations include replacing doors and windows, increasing wall and ceiling thickness and mass, removing penetrations through exterior walls, and installing mechanical systems which circulate air.

This work can either be implemented by homeowners, by municipalities, or through a Federally-funded program. If Federal funds are used, the noise goals outlined below would apply.

5.1 Federally Mandated Noise Goals

The *Airport Improvement Program (AIP) Handbook* is a document published by the Federal Aviation Administration (FAA) to provide guidelines for sound insulation programs that receive federal funds. Chapter 8 of the handbook deals specifically with noise compatibility projects and the regulations that must be satisfied in order to have project funding reimbursed. Following is an excerpt from Chapter 8 "Noise Compatibility Projects" of FAA Order 5100.38B that was issued on May 31, 2002.

SECTION 2 NOISE COMPATIBILITY PROJECTS

Article 812 NOISE INSULATION PROJECTS

Division b. Residential Noise Insulation

(1) The design objective in a residential noise insulation project generally should be to achieve the requisite Noise Level Reduction (NLR) when the project is completed. (This is mathematically equivalent to achieving a DNL of 45 dB in all habitable rooms.) For residences located in areas where exterior noise exposure is DNL 65 dB, the requisite NLR provided by the structure should be at least 20 dB in major habitable rooms. The requisite NLR should be increased commensurate with any increase in exterior DNL above 65 dB. The project design should be based on exterior DNL and the existing NLR in the structure. The existing construction must provide less than the needed noise level reduction for the noise exposure level at the location of the residence. For example, a house having a 30 dB noise level reduction located at the DNL 68 dB is nominally compatible because the interior noise level would be approximately equivalent to 38 dB, well below the target 45 dB. Although such a dwelling is nominally compatible, some lesser level of noise insulation (replacement of depreciated windows, storm doors, caulking and weather stripping, etc.) may be provided to assure conformity of improvements and perceived equity of application in the project neighborhood.

(2) Since it takes an improvement of at least 5 dB in NLR to be perceptible to the average person, any residential noise insulation project should be designed to provide at least that increase in NLR as a marginal minimum.

(3) Examples.

(a) A residence located in an area where the DNL is 73 dB has existing NLR of 26 dB. The requisite NLR in that area is 28 dB (73 - 45). However, to meet the requirement for increasing the NLR by not less than 5 dB, a noise attenuation project for that residence should result in NLR of 31 dB (26 + 5).

(b) A residence located in an area where the DNL is 67 dB has existing NLR of 16 dB. The requisite NLR in that area is 22 dB (67 - 45). Therefore, the noise insulation project should be designed to increase the NLR by 6 dB (22 - 16).

DNL is the metric that has been chosen by the FAA to determine a structure's eligibility for inclusion in a federally supported sound insulation program. The FAA also uses DNL to define the minimum sound insulation that should be provided to a residential structure. It is important to note that, although the normal eligibility requirements are fixed (exterior DNL between 65 and 75 dB) the mandated NLR is a minimum requirement. Sound insulation, which increases the NLR of the structure, can be provided without violating the conditions of the AIP Handbook.

In general, DNL is an appropriate noise metric to use for identifying eligible houses for sound insulation because it correlates fairly well with the overall community reaction to environmental noise, and it is related to the total acoustic energy received. DNL takes into account both the sound level of typical flyover events and the number of events that occur. A structure experiencing a large number of overflights in a 24-hour period will have a higher DNL than a structure experiencing a small number of similar events in that period. Although DNL correlates well with a community's reaction to noise, it does not necessarily correlate with any single individual's reaction.

In summary, the criteria used in developing the acoustic insulation modification designs for the residences are as follows:

- In all major habitable rooms provide sufficient sound insulation such that an interior DNL of 45 dB is achieved.
- In all rooms that receive sound insulation modifications, increase the pre-modification NLR by at least 5 dB.

5.2 Housing Survey

A housing survey was completed in February 2004 by CSHQA, a planning firm located in Boise that is a subcontractor for the Part 150 Study update. The survey included two parts. The first part was a general survey of housing in the Airport Influence Area, and the second part was a specific survey of nine houses located within the Airport Influence Area. The ages of these nine homes range from 1 to 44 years, and therefore provided useful information on existing homes eligible for sound insulation as well as new homes. The survey focused on the construction of the homes and the existing condition of the elements most crucial to noise infiltration, including doors, windows, walls, roofs, and wall penetrations.

The general survey gathered the following information:

1. The rough percentages of units that are: single family, duplex, townhome, apartment (multifamily), and mobile home.
2. For single family homes: the rough percentages of units that are 1, 1.5, 2, and 3 stories tall.
3. For single family homes: What are the most typical home sizes in terms of approximate square feet and approximate number of bedrooms?
4. What insulation R-value required/commonly used for roof?
5. Approximately how deep are roof trusses or joists?
6. Rough percentage of residences that are solid masonry vs. wood frame.
7. How common are brick, block, stone, and stucco? Are they commonly found only on the façade, or the whole house?
8. Are 2x4 or 2x6 studs more common?
9. What is the most common sheathing type for wood-framed houses: OSB or insulation board (e.g., Thermoply or Energy Brace).
10. How thick is typical drywall? Is plaster ever used?
11. Opinions on the feasibility of possible sound insulation wall treatments. For existing construction: additional layers of gypsum board? For new construction: Resilient channels? 2x6 studs? Staggered studs?
12. Opinions on ceiling treatments. For existing construction, additional layer of gypsum board? For new construction: resilient channels? Scissor trusses providing "false" vaulted ceilings (a sloped ceiling with insulated attic space above)?
13. Are storm Windows acceptable as a sound insulation modification?
14. Are skylights common in this area?
15. Is there an R-value requirement for windows/doors? Typical value?
16. What window style(s) are most common? Single hung, double hung, fixed, casement, slider, awning.
17. Are swinging storm doors typical?
18. Are slider or French doors typical?
19. Do exterior doors usually swing inward?
20. What are the rough percentages of home with: vinyl siding; aluminum siding; Handiplank; wood; EIFS; asbestos tiles?
21. Are full basements, crawl spaces, or slab foundations most common?
22. Are vaulted ceilings common?
23. Are there standards for fresh air/ventilation/circulation, aside from heat and air conditioning?
24. Is central air-conditioning common in existing homes? Do existing homes use window or thru-wall air conditioners?
25. Are forced hot air systems or radiators more common?
26. Are fireplaces common in this area?

The responses to the survey questions for the sample houses and general observations for the housing within the Airport Influence Area are presented in Appendix E. Since it was not possible to enter the homes, estimates were provided for the square footage, number of bedrooms, and other factors. Table 5-1 presents a summary of each house.

Table 5-1. Summary of Survey Houses

House Number	Year Built	Approx. Square Footage	Number of Bedrooms	Number of Floors	Windows
1	2000	2600	5	2	Double-Pane Vinyl
2	1994	2000	4	2	Double-Pane Vinyl
3	1960	1400	3	1	Single-Pane Metal
4	2003	1537	3	1	Double-Pane Vinyl
5	Unknown	1200	2 or 3	1	Single-Pane Metal
6	1998	1850	4	2	Double-Pane Vinyl
7	1977	2172	3	1	Single-Pane Metal
8	1983	2088	3	1	Double-Pane Vinyl
9	1973	2144	3	1	Single-Pane Metal

5.3 Prototypical Houses

The housing survey provided a representative sample of the housing stock in the Airport Influence Area. From the 9 homes in the survey, 3 were chosen to represent “prototypical” house types for the purpose of completing sound insulation modification designs. These designs will provide a sample of what types of modifications are required, and how they vary for houses of different sizes and ages, with different windows, doors, and other elements. Survey houses 2, 3, and 7 were chosen since they were built in different decades, have varying numbers of floors, and different wall and window constructions. Appendix E contains the complete survey information for each of these houses.

Existing mobile homes, such as survey house 5, are not usually sound insulated for several reasons. The light construction of the walls makes it difficult to add heavier, thicker acoustical windows. In addition, the cost of renovating a home for sound insulation approaches the total value of a typical mobile home, so it is more feasible to replace existing mobile homes. New mobile homes with heavier construction, double-glazed windows, and other selected modifications may be able to meet the AIP noise goals outlined above in some cases.

5.4 Sound Insulation Designs

The sound insulation designs were developed from a computer model of the 3 prototypical homes. Since floor plans were not available, the areas of the roofs, walls, windows, and doors for each room of each house were estimated based on the total square footage and number of bedrooms in each house, and the photographs provided in the housing survey.

Various architectural modifications were evaluated using this computer model. The assumed sound insulation properties of the existing construction and proposed modifications were based upon a combination of manufacturer test data, technical literature, and a comprehensive database from past Wyle projects. A collection of modifications was finally selected for each analyzed room that satisfied the acoustical design goals. The results for each room were compared for each house separately, and generalized sound insulation renovation designs were completed for each house.

Sound insulation designs were completed for two groups: houses located where the outdoor DNL is below 70 dB, and houses located where the DNL is between 70 and 75 dB. Homes located within the 75 DNL contour are not normally sound insulated using AIP funds. To meet the FAA requirements presented in Section 5.1, these designs provide a noise level reduction (NLR) of at least 25 dB for the first group, and at least 30 dB for the second group. In addition, the designs must increase the NLR by at least 5 dB in every room. In some instances, the existing NLR for a room was already above 25 dB. If such rooms were in houses exposes to a DNL below 70 dB, no modifications would be required to meet the 45 dB indoor goal. However, modifications would be required to increase the NLR by 5 dB, even though the indoor DNL was already below 45 dB.

The sound insulation designs are presented in Tables 5-2, 5-3 and 5-4. These tables show the existing construction elements and approximate Sound Transmission Class (STC) values, and the sound insulation designs for the two groups. The “ceiling” column applies *only* to rooms with an attic space above. Any room with finished rooms above will not need ceiling modifications. Rooms with a vaulted ceiling require special treatment noted below.

Table 5-2. Sound Insulation Designs for Survey House 2

Design	Exterior Wall	Window	Door	Ceiling	NLR (dB)
Existing	STC 38	STC 28	STC 25	STC 50*	21.5 - 30
DNL < 70	STC 43	STC 36	STC 31	STC 50	> 25
DNL 70 – 75	STC 43	STC 40	STC 37	STC 50	> 30

* For vaulted ceilings, the existing rating is STC 45. Additional sound insulation modifications are required. See explanation below.

Table 5-3. Sound Insulation Designs for Survey House 3

Design	Exterior Wall	Window	Door	Ceiling	NLR (dB)
Existing	STC 38	STC 24	STC 25	STC 50	22.5 – 29.5
DNL < 70	STC 41	STC 36	STC 31	STC 50	> 25
DNL 70 – 75	STC 43	STC 40	STC 37	STC 50	> 30

Table 5-4. Sound Insulation Designs for Survey House 7

Design	Exterior Wall	Window	Door	Ceiling	NLR (dB)
Existing	STC 38	STC 24	STC 25	STC 50	19.8 – 28
DNL < 70	STC 41	STC 36	STC 31	STC 50	> 25
DNL 70 – 75	STC 43	STC 40	STC 37	STC 50	> 30

Replacement windows and doors may be obtained from the manufacturers listed in Appendix B. Installation methods specified by the manufacturer and described in Sections 3.2, 3.3, 3.4, and Appendix A must be followed.

To achieve the specified wall STC ratings, the following renovations are required. To achieve an STC 41 rating, one layer of 5/8" gypsum wall board must be added to the existing interior gypsum board or plaster walls. The new gypsum board must be screwed into the studs. In addition, blown-in insulation should be added to the wall cavity before installing the new gypsum board. To achieve an STC 43 rating, two layers of 5/8" gypsum board must be added to the existing interior walls, with blown-in insulation also added.

Masonry walls provide a rating of approximately STC 50. However, this only applies to walls that have an exterior constructed entirely of masonry or a masonry façade. A masonry accent or half-masonry, half-sided wall will still require additional gypsum board.

For rooms with vaulted ceilings, the existing roof construction will provide a rating of approximately STC 45. For rooms with vaulted ceilings in houses located where the DNL is below 70 dB, one layer of 5/8" gypsum board must be added to the existing interior gypsum board or plaster ceiling. For houses located where the DNL is between 70 and 75 dB, storm windows and storm doors must be added to rooms with vaulted ceilings, in addition to one layer of gypsum board on the ceiling. In this case, the prime and storm door combination must have a rating of STC 43, and the prime and storm window combination must have a rating of STC 44.

In some cases, walls and ceilings may not have a gypsum board or plaster finish. For walls with paneling installed directly on the studs, new gypsum board must be installed. Two new layers will achieve a rating of STC 41, and three new layers will achieve a rating of STC 43. Perhaps a more cost-effective solution to achieve STC 43 is to remove the existing wall finish, add resilient channels, and hang one layer of gypsumboard from the channels. Section 3.5 provides additional information on resilient channels. For flat ceilings with an attic above, suspended tile ceilings and tile ceilings installed directly on the joists are not acceptable. They must be replaced with a single layer of 5/8" gypsum board.

In addition to the modifications presented in Tables 5-1, 5-2, and 5-3, several other modifications are required to sound insulate an existing home. All wall penetrations must

be removed, including thru-wall and window air-conditioners, mail slots, and exhaust fan duct openings. A home without central air conditioning is usually provided with such a system to allow the homeowner to keep the windows and doors shut in the summer. A ventilation system should be provided to ensure that air quality is good. For houses with a gas-fired furnace a combustion air fan should be provided. Attic vents must be fitted with acoustical baffles. Sections 3.8 and 3.9 provide further details on ventilation systems and the sound insulation of ventilation openings and fireplaces, and Section 3.6 provides details on attics.

5.5 Local Building Code Requirements

When renovating existing homes the local building codes must be followed. Local building code officials have addressed several important issues related to sound insulation modifications. They include:

1. Replacement windows must provide the same clear opening area as the existing windows, to provide an escape in the event of fire. Acoustical windows may have thicker frames than existing windows. In this case, the framing must be modified to allow for a replacement window that is larger than the existing window. This problem may also be encountered when the replacement window is of a different style (for example, replacing a slider with a double-hung window).
2. Any doors connecting the inhabitable rooms of the house and the garage must have a 20-minute fire rating. A 1-3/4" solid wood door would meet this requirement. Replacing such doors is a common sound insulation modification.
3. Porches and landings for exterior doors must have a length of at least 36 inches. This must be met for replacements doors, which may include storm doors.
4. Interior stairway landings must have a width of 36 inches. The addition of 1 or 2 layers of 5/8" gypsum board for sound insulation must not interfere with this requirement.
5. Interior ceiling height for habitable rooms must be at least 7 feet 6 inches. The addition of gypsum board and/or new ductwork to the ceiling must not compromise this requirement.
6. The addition of new electrical appliances (i.e. central air conditioning) will not require the upgrading of wiring throughout the house. Only wiring related to the renovation project must be upgraded. This would include wiring for electrical outlets along exterior walls that would have to be reinstalled after new gypsum board layers are added. If the capacity of the existing electrical panel were to be exceeded, a new panel would have to be added.
7. Attic ventilation of 1 square foot per 150 square feet of attic floor area must be provided.
8. Renovation of basement rooms will not necessitate improving the existing window sizes to meet the minimum dimensions in the building code for emergency exits purposes. However, as mentioned above, window and doors clear opening areas must not be decreased from existing dimensions.
9. Installing glass doors on fireplaces to provide noise mitigation is allowed. However, combustion air must be allowed to flow into the chamber or flue, so this air must be allowed to enter from the outside.

Appendix A

New Construction: Noise Level Reduction Design Requirements

SECTION 1: PURPOSE

Exterior noise having a significant impact on human activity, health and safety may be isolated and reduced in residences through construction techniques which selectively increase the insulating quality of the structures. The noise level reductions required are 25, 30, and 35 dB.

SECTION 2: GENERAL REQUIREMENTS

- A. The NLR requirements specified herein may be achieved by any suitable combination of building designs, choices of building materials, and execution of construction details in accordance with established architectural and acoustical principles. The NLR requirements should be applied to all occupied rooms having one or more exterior walls or ceiling. The Sound Transmission Class (STC) ratings required for exterior walls, windows, doors, and ceilings are presented in Table 4-1.
- B. Compliance with the construction standards herein are sufficient to comply with the NLR requirements specified in the various airport land use districts. These standards are applicable to plans and specifications for any proposed residence. If the plans and specifications do not indicate compliance with the construction standards herein, the local building code should be amended to require a written statement from a qualified acoustical consultant certifying that the construction of the building as indicated in the plans and specifications will result in a NLR for appropriate occupied rooms at least as great as the NLR value specified for the applicable airport use district.
- C. Sound Transmission Class (STC) ratings for windows and doors are valid only if they are determined by laboratory tests performed by an independent laboratory for the product manufacturer. A rating estimated for glass alone is not an acceptable substitute for STC tests of windows. Likewise, ratings estimated for door leafs alone are not an acceptable substitute for STC ratings of doors. The installed products must have the same accessories such as storm panels, glazing thickness, glazing size, gaskets, bottom door seals, thresholds, etc., as the tested assembly.
- D. In order to achieve the STC ratings specified below special measures are necessary to install doors and windows. These include the use of non-hardening (acoustical) caulk at all hidden surfaces, flexible caulk at all exposed surfaces, and solid continuous blocking to fill all voids over 1/4" around windows and doors.

SECTION 3: BUILDING REQUIREMENTS FOR A MINIMUM NLR OF 25 dB.

A. Exterior Walls

1. The interior surface of exterior walls shall be of gypsum board or plaster at least 1/2 inch thick.
2. Fiberglass batt or blanket insulation shall be installed continuously and completely throughout the stud cavity. Batts or blankets should be held firmly in place between studs, with fasteners if necessary, to prevent sagging; however, packing the insulation such that it is compressed may slightly *reduce* its acoustical (and thermal) performance.

B. Windows

1. Windows other than as described in this section shall have a laboratory sound transmission class rating of at least STC-33.
2. Windows in any room with one exterior wall and a total exterior wall area below 170 square feet may have a laboratory sound transmission class rating of at least STC-27.

C. Doors

1. Exterior doors, other than as described in this section shall have a laboratory sound transmission class rating of at least STC-24.
2. Interior doors between occupied spaces and attached garages or unfinished attic spaces shall be solid-core wood or 20-gauge insulated metal at least 1-3/4 inches thick and shall be fully weatherstripped.

D. Roof-Ceiling Assembly

1. The standard roof construction is assumed to be shingles, 7/16" minimum OSB deck, and wood trusses or rafters spaced 16" or more O.C. forming an attic space over occupied rooms.
2. The use of cathedral ceilings is strongly discouraged for homes exposed to aircraft noise. A mock-cathedral ceiling with a small attic space above is recommended. If a cathedral ceiling is used, the gypsum board ceiling must be hung using resilient channels.
3. Skylights can be used if a secondary panel of 1/4-inch-thick safety glass or insulated thermopane glass is used at the bottom of the skylight well. Alternatively, skylights with an STC 38 rating can be used.
4. Gypsum board or plaster ceilings at least 1/2 inch thick shall be provided. Ceilings shall be substantially airtight with a minimum number of penetrations.

E. Floors, Foundations and Basements

1. The floor of the lowest occupied rooms shall be slab on fill, below grade, or over a fully enclosed basement or crawlspace. If the basement is used as a habitable living area (as a recreation area, study, or additional sleeping area, for example), the doors and windows shall conform to the requirements stated in this ordinance.
2. Concrete slabs require no treatment. Crawl spaces and basements are discussed below.
3. Crawl spaces with masonry walls must have noise control louvers at the under-floor vents (see Appendix B). If crawl spaces do not have masonry walls, a massive barrier panel must be used as a skirt connecting the bottom of the walls to the ground (see Section 3.7).
4. Dryer vents and other basement vents should be constructed of sheet metal to limit the amount of noise that will enter through them and then pass through the duct wall to the surrounding room.

F. Ventilation and Wall Penetrations

1. In-window, through-wall, or through-floor air-conditioning, ventilating, or heating units shall not be used.
2. Through-the-wall/door mailboxes or mail slots shall not be used.
3. A mechanical ventilation system should be installed that will provide the minimum air circulation and fresh air supply requirements for various uses in occupied rooms, without the need to open any windows, doors, or other openings to the exterior.
4. Gravity vent openings in attics shall not exceed the code minimum in number and size.
5. If an attic fan is used for forced ventilation, the attic inlet and discharge openings shall be fitted with sheet metal transfer ducts of at least 20 gauge steel at least 5 feet long with at least one 90° bend.
6. All vent ducts connecting the interior space to the outdoors, excepting domestic range exhaust and bathroom exhaust ducts, shall contain at least two 90° bends.
7. Domestic range exhaust ducts connecting the interior space to the outdoors shall be at least 20 gauge steel and shall contain at least two 90° bends. Alternatively, unvented range exhaust fans may be used, if allowed by applicable codes.
8. Fireplaces, if present, shall be provided with glass doors and well-fitted dampers. Wood stoves shall not be used.
9. A combustion air fan is recommended if there is a gas-fired furnace.

SECTION 4: BUILDING REQUIREMENTS FOR A MINIMUM NLR OF 30 dB.

A. Exterior walls

1. Exterior walls other than as described below shall have a laboratory sound transmission class rating of at least STC-43. This rating can be achieved as follows. The gypsum board or plaster shall be fastened rigidly to the studs if the exterior is brick veneer. If the exterior is siding, the interior gypsum board or plaster must be fastened to the studs using resilient channels. Resilient channels must be installed horizontally along the studs, and screws connecting the gypsum board or plaster to the channels must not contact the studs. Oriented Strand Board (OSB) at least 7/16 inches thick shall cover the exterior side of the wall studs.
2. Rooms that have one exterior wall and a total exterior wall area below 170 square feet need not meet the requirements of the paragraph above.
3. The interior surface of the exterior walls shall be of gypsum board or plaster at least 1/2 inch thick.
4. Fiberglass batt or blanket insulation shall be installed continuously and completely throughout the stud cavity. Batts or blankets should be held firmly in place between studs, with fasteners if necessary, to prevent sagging; however, packing the insulation such that it is compressed may slightly *reduce* its acoustical (and thermal) performance.

B. Windows

1. Windows other than as described in this section shall have a laboratory sound transmission class rating of at least STC-33.
2. Windows in rooms with 2 exterior walls and a total exterior wall area greater than 300 square feet must have a laboratory sound transmission class rating of at least STC-40.

C. Doors

1. Exterior doors, or door/storm composite assemblies, other than as described in this section shall have a laboratory sound transmission class rating of at least STC-26. A typical door in combination with a typical storm door will achieve a rating of at least STC 26. Therefore, either a door tested to achieve an STC 26 rating may be used, or else a storm door can be added to an untested door. If a storm door is not used, all glass in the door shall be at least 3/16" thick.
2. Doors in rooms with 2 exterior walls and a total exterior wall area greater than 300 square feet must have a laboratory sound transmission class rating of at least STC-33. This rating may be achieved either by using a door tested to achieve an STC 33 rating, or a typical door in combination with a secondary/storm door tested to achieve an STC 29 rating, or a typical door in combination with a *full-view* secondary/storm door utilizing 1/4" thick laminated glass. If a storm door is not used, all glass in the door shall be at least 1/4" thick laminated glass.
3. Interior doors between occupied spaces and attached garages or unfinished attic spaces shall be solid-core wood or 20-gauge insulated metal at least 1-3/4 inches thick and shall be fully weather-stripped.
4. If a storm/secondary door is used, the airspace between the surfaces of the two doors shall be maximized.

D. Roof-Ceiling Assemblies

1. The standard roof construction is assumed to be shingles, 7/16" minimum OSB deck, and wood trusses or rafters spaced 16" or more O.C. forming an attic space over occupied rooms.
2. Roof-ceiling assemblies in top-floor rooms with 2 exterior walls and a total exterior wall area greater than 300 square feet must have a laboratory sound transmission class rating of at least STC-56. The required construction consists of resilient channels mounted perpendicular to the ceiling joists, on the bottom of the joists, with one layer of 1/2" gypsum-board attached to the channels. Resilient channels must be installed horizontally along the studs, and screws connecting the gypsum board or plaster to the channels must not contact the studs.
3. The use of cathedral ceilings is not allowed. A mock-cathedral ceiling with a small attic space above is acceptable.
4. Skylights can be used if a secondary panel of 1/4-inch-thick safety glass or insulated thermopane glass is used at the bottom of the skylight well. Alternatively, skylights with an STC 38 rating can be used.

5. Gypsum board or plaster ceilings at least 1/2 inch thick shall be provided. Ceilings shall be substantially airtight with a minimum number of penetrations.

E. Floors, Foundations and Basements

1. The floor of the lowest occupied rooms shall be slab on fill, below grade, or over a fully enclosed basement or crawlspace. If the basement is used as a habitable living area (as a recreation area, study, or additional sleeping area, for example), the doors and windows shall conform to the requirements stated in this ordinance.
2. Concrete slabs require no treatment. Crawl spaces and basements are discussed below.
3. Crawl spaces with masonry walls must have noise control louvers at the under-floor vents (see Appendix B). If crawl spaces do not have masonry walls, a massive barrier panel must be used as a skirt connecting the bottom of the walls to the ground (see Section 3.7).
4. Dryer vents and other basement vents should be constructed of sheet metal to limit the amount of noise that will enter through them and then pass through the duct wall to the surrounding room.

F. Ventilation and Wall Penetrations

1. In-window, through-wall, or through-floor air-conditioning, ventilating, or heating units shall not be used.
2. Through-the-wall/door mailboxes or mail slots shall not be used.
3. A mechanical ventilation system should be installed that will provide the minimum air circulation and fresh air supply requirements for various uses in occupied rooms, without the need to open any windows, doors, or other openings to the exterior.
4. Gravity vent openings in attics shall not exceed the code minimum in number and size.
5. If an attic fan is used for forced ventilation, the attic inlet and discharge openings shall be fitted with sheet metal transfer ducts of at least 20 gauge steel at least 5 feet long with at least one 90° bend.
6. All vent ducts connecting the interior space to the outdoors, excepting domestic range exhaust and bathroom exhaust ducts, shall be at least 10 feet long and shall contain at least two 90° bends. It is recommended that in-line sound attenuators (silencers) be installed in fresh-air intake ducts larger than 3" in diameter.
7. Unvented range exhaust fans shall be used, if allowed by applicable codes. If unvented range exhaust fans are not allowed by applicable codes, range exhaust ducts connecting the interior space to the outdoors shall be at least 20 gauge steel and shall contain at least two 90° bends.
8. Operational vented fireplaces or wood stoves shall not be used.
9. A combustion air fan is recommended if there is a gas-fired furnace.

SECTION 5: BUILDING REQUIREMENTS FOR A MINIMUM NLR OF 35 dB**A. Exterior walls**

1. Exterior walls other than as described below shall have a laboratory sound transmission class rating of at least STC-47. To achieve this rating, all exterior wall studs must have 2 x 6 studs, and the interior ½ inch gypsum board or plaster must be fastened to the studs using resilient channels. Resilient channels must be installed horizontally along the studs, and screws connecting the gypsum board or plaster to the channels must not contact the studs.
2. Exterior walls in any room with one exterior wall and a total exterior wall area below 170 square feet shall have a laboratory sound transmission class rating of at least STC-43. To achieve this rating, the interior ½ inch gypsum board or plaster must be fastened to the 2 x 4 studs using resilient channels. Resilient channels must be installed horizontally along the studs, and screws connecting the gypsum board or plaster to the channels must not contact the studs.
3. Exterior walls in any room with two exterior walls and a total exterior wall area greater than 300 square feet shall have a laboratory sound transmission class rating of at least STC-49. To achieve this rating, a staggered stud construction must be used for all exterior walls. This construction uses two rows of 2 x 4 studs on a 2x6 base plate: one row of studs spaced 16" on center supporting the sheathing, and a second row spaced 16" on center supporting the interior wall finish. The end result is that there are studs each 8" on center. ½ inch gypsum board or plaster must be used.
4. Oriented Strand Board (OSB) at least 7/16 inches thick shall cover the exterior side of the wall studs.
5. Fiberglass batt or blanket insulation shall be installed continuously and completely throughout the stud cavity. Batts or blankets should be held firmly in place between studs, with fasteners if necessary, to prevent sagging; however, packing the insulation such that it is compressed may slightly *reduce* its acoustical (and thermal) performance.

B. Windows

1. Windows other than as described in this section shall have a laboratory sound transmission class rating of at least STC-40.
2. Windows in rooms with 2 exterior walls and a total exterior wall area greater than 300 square feet must have a laboratory sound transmission class rating of at least STC-44.

C. Doors

1. Exterior doors, or door/storm composite assemblies, other than as described in this section shall have a laboratory sound transmission class rating of at least STC-38. Achieving this rating will require the use of specialty acoustical products.
2. Interior doors between occupied space and attached garage or unfinished attic spaces shall be solid-core wood or 20-gauge insulated metal at least 1-3/4 inches thick and shall be fully weather-stripped.

3. If a storm/secondary door is used, the airspace between the surfaces of the two doors shall be maximized.

D. Roof-Ceiling Assemblies

1. The standard roof construction is assumed to be shingles, 7/16" minimum OSB deck, and wood trusses or rafters spaced 16" or more O.C. forming an attic space over occupied rooms.
2. Roof-ceiling assemblies in top-floor rooms with 2 exterior walls and a total exterior wall area greater than 300 square feet must have a laboratory sound transmission class rating of at least STC-56. The required construction consists of resilient channels mounted perpendicular to the ceiling joists, on the bottom of the joists, with one layer of ½" gypsum-board attached to the channels. Resilient channels must be installed horizontally along the studs, and screws connecting the gypsum board or plaster to the channels must not contact the studs.
3. The use of cathedral ceilings is not allowed. A mock-cathedral ceiling with a small attic space above is acceptable.
4. Skylights shall not be used.
5. Gypsum board or plaster ceilings at least 1/2 inch thick shall be provided. Ceilings shall be substantially airtight with a minimum number of penetrations.

E. Floors, Foundations and Basements

1. The floor of the lowest occupied rooms shall be slab on fill, below grade, or over a fully enclosed basement or crawlspace. If the basement is used as a habitable living area (as a recreation area, study, or additional sleeping area, for example), the doors and windows shall conform to the requirements stated in this ordinance.
2. Concrete slabs require no treatment. Crawl spaces and basements are discussed below.
3. Crawl spaces with masonry walls must have noise control louvers at the under-floor vents (see Appendix B). If crawl spaces do not have masonry walls, a massive barrier panel must be used as a skirt connecting the bottom of the walls to the ground (see Section 3.7).
4. Dryer vents and other basement vents should be constructed of sheet metal to limit the amount of noise that will enter through them and then pass through the duct wall to the surrounding room.

F. Ventilation and Wall Penetrations

1. In-window, through-wall, or through-floor air-conditioning, ventilating, or heating units shall not be used.
2. Through-the-wall/door mailboxes or mail slots shall not be used.
3. A mechanical ventilation system should be installed that will provide the minimum air circulation and fresh air supply requirements for various uses in occupied rooms, without the need to open any windows, doors, or other openings to the exterior.
4. Gravity vent openings in attics shall not exceed the code minimum in number and size.

5. If an attic fan is used for forced ventilation, the attic inlet and discharge openings shall be fitted with sheet metal transfer ducts of at least 20 gauge steel at least 10 feet long with at least one 90° bend.
6. All vent ducts connecting the interior space to the outdoors, excepting domestic range exhaust and bathroom exhaust ducts, shall be at least 10 feet long and shall contain at least two 90° bends. It is recommended that in-line sound attenuators (silencers) be installed in fresh-air intake ducts larger than 3" in diameter.
7. Unvented range exhaust fans shall be used, if allowed by applicable codes. If unvented range exhaust fans are not allowed by applicable codes, range exhaust ducts connecting the interior space to the outdoors shall be at least 20 gauge steel and shall contain at least two 90° bends.
8. Operational vented fireplaces or wood stoves shall not be used.
9. A combustion air fan is recommended if there is a gas-fired furnace.

Appendix B

Manufacturers of Acoustical Materials

This list represents a partial list of typical suppliers of specialty acoustical products. Other manufacturers not listed may have comparable products. The list below does not imply a product endorsement or recommendation by Wyle Laboratories.

BATTS AND RIGID FIBERGLASS INSULATION

Owens Corning Fiberglass Corp.
One Owens Corning Parkway
Toledo, Ohio 43659
800-GET PINK
<http://www.owenscorning.com/>

Knauf Fiberglass
Tel: 800-825-4434
Fax: 317-398-3675
<http://www.knauffiberglass.com>

CertainTeed
(800) 233-8990
<http://www.certainteed.com/>

Johns Manville
P. O. Box 5108
Denver, Colorado 80217-5108
800-654-3103
<http://www.jm.com/>

DOORS

Algoma Hardwoods
1001 Perry Street
Algoma, Wisconsin 54201
800.678.8910
<http://www.algomahardwoods.com/>

Hess-Armaclad, Inc.
Box 127
Quincy, PA 17247
800-541-6666
www.armaclad.com

Eggers Industries
PO Box 1050
Neenah, WI 54957-1050
Phone: 920-722-6444
<http://www.eggersindustries.com/>

Weyerhaeuser Architectural Doors
1401 East 4th Street
Marshfield, WI 54449-7780
800-869-3667
www.weyerhaeuser.com/

Pioneer Industries
401 Washington Avenue
Carlstadt, New Jersey 07072
201/933-1900
<http://www.pioneerindustries.com>

Buell Door Company
5200 East Grand Ave.
Dallas, TX 75223
214/827-9260: 800/556-0155
<http://www.buelldoor.com/>

Peerless Products, Inc.
2403 S. Main
Fort Scott, KS 66701
866-420-4000
<http://www.peerlessproducts.com/>

Mon-Ray, Inc.
801 Boone Avenue North
Minneapolis, MN 55427-4432
800-544-3646
<http://www.monray.com/>

DUCT ATTENUATORS AND NOISE CONTROL LOUVERS

Aeroacoustic Corp.
3300 Corporation Way
Darlington, SC 29532
843-398-1006
<http://www.aeroacoustic.com/>

Industrial Acoustics Company
1160 Commerce Avenue
Bronx, New York 10462
(718) 931 8000
<http://www.industrialacoustics.com/>

United McGill Corporation
Duct Express Outlet (NC rep)
704-393-1056
<http://www.mcgillairflow.com>

DOOR SEALS AND WEATHERSTRIPPING

Pemko Manufacturing Co.
5535 Distribution Drive
Memphis, TN 38141
800-824-3018 or 901-365-2160
<http://www.pemko.com/>

Zero International, Inc.
415 Concord Avenue
Bronx, New York 10455-4898
718/585-3230
<http://www.zerointernational.com/>

National Guard Products, Inc.
4985 East Raines Rd
Memphis, TN 38118
800/647-7874
<http://www.ngpinc.com/>

SPECIALTY ACOUSTICAL WINDOW UNITS

Rehau Incorporated
P.O. Box 1706
Leesburg, VA 20177
703-777-5255
<http://www.rehau.com>

Wausau Metals Corp.
1415 West Street
Wausau, WI 54401
715-845-2161
<http://www.wausauwindows.com>

Peerless Products, Inc.
2403 S. Main
Fort Scott, KS 66701
866-420-4000

Mon-Ray, Inc.
801 Boone Avenue North
Minneapolis, MN 55427-4432
800-544-3646

Harvey Industries Inc.
43 Emerson Road
Waltham, MA 02154-4689
800-225-6183 or 781-398-7718
www.harveyind.com

Republic Windows and Doors
930 West Evergreen Ave
Chicago, IL 60622
(609) 654-5512
<http://www.republicwindows.com/>

Graham Architectural Products Corp.
1551 Mt. Rose Avenue
York, PA 17403-2909
800-755-6274
<http://www.grahamarch.com/>

Appendix C

Independent Certified Acoustical Testing Laboratories

This list represents a partial list of Certified Acoustical Testing Laboratories. The list below does not imply an endorsement or recommendation by Wyle Laboratories. The National Voluntary Laboratory Accreditation Program (NVLAP) maintains a Directory of Accredited Laboratories on their website:

<http://ts.nist.gov/ts/htdocs/210/214/scopes/acots.htm>

Acoustic Systems Acoustical
Research Facility, Inc.
415 East St. Elmo Road
P.O. Box 3610
Austin, TX 78764
512/444-1961

Western Electro-Acoustic Lab., Inc.
25132 Rye Canyon Loop
Santa Clarita, CA 91355
661-775-3741

Architectural Testing Inc.
130 Derry Ct.
York, PA 17402
717-764-7700

Stork-Twin City Testing, Inc.
662 Cromwell Avenue
St. Paul, MN 55114-1776
651-645-3601

Riverbank Acoustical Labs, Inc.
1512 Batavia Avenue
Geneva, Illinois 60134
630-232-0104

Orfield Laboratories, Inc.
2709 E. 25th Street
Minneapolis, MN 55406
612-721-2455

Appendix D

Glossary

Absorption Coefficient The sound-absorbing ability of a material. Values of absorption coefficient are a function of the frequency of the incident sound. The values of sound absorption coefficients usually range from about 0.01 (for hard smooth surfaces) to about 1.0 (for thick absorptive fiberglass).

Acoustical Treatment Applying design principles in architectural acoustics to reduce noise or vibration and to correct acoustical problems.

Acoustics The science of sound, including the generation, transmission, and effects of sound waves, both audible and inaudible.

Airborne Sound Sound traveling through air rather than through solid materials or the structure of the building.

Ambient Noise Level Sometimes called the "background" noise, the level of noise that is all-encompassing within a given environment. It is usually made up of many different sounds, some originating near to and far from the receiver.

American National Standards Institute (ANSI) A voluntary federation of organizations concerned with developing standards covering a broad spectrum of topics.

American Society of Heating, Refrigerating, and Air-Conditioning Engineers (ASHRAE) A professional organization which identifies and publishes specifications and standard practices relating to all aspects of heating, ventilation, refrigeration, and air conditioning.

American Society for Testing and Materials (ASTM) An organization which develops and publishes recommended practices and standards for a broad range of testing and material properties issues.

Architectural Acoustics The science of sound, including its production, transmission, control, and effects within buildings.

Attenuation The reduction of sound.

A-Weighted Sound Level A sound measure, in decibels, that reflects the heightened sensitivity of the human ear to sound frequencies between 1000 and 6000 Hz, and the relatively reduced sensitivity to sound below 1000 Hz or above 6000 Hz. The A-weighted sound level is used to predict the relative "noisiness" or "annoyance" of many common sounds.

Background Noise Ambient noise from all sources unrelated to a any particular sound. Background noise may include airborne, structureborne, and instrument noise.

Balanced Design A noise control design in which all important noise paths transmit the same amount of acoustic energy into the space, avoiding any "weak links" so that the combined effect ensures an acceptable noise level.

Building Officials and Code Administrators International (BOCA) See *International Building Code*.

Dampen To cause a reduction, usually through dissipation, of the sound energy.

Day-Night Average Sound Level (DNL or Ldn) The day-night average sound level is a measure of the average noise environment over a 24-hour day. It is the 24-hour energy-averaged, A-

weighted sound level with a 10 dB penalty applied to the nighttime levels which occur between 10:00 p.m. to 7:00 a.m.

Decibel (dB) The term used to describe sound levels.

Design Criteria Design goals used in acoustical and noise control design of buildings. Design criteria may be stated either as the maximum allowable noise levels inside buildings or as noise reduction values (from outside to inside) required for certain types of buildings or rooms.

DNL See Day-Night Average Sound Level.

Environmental Noise Unwanted sound from various outdoor noise sources. Environmental noise sources include aircraft, cars, trucks, buses, railways, industrial plants, construction activities, lawnmowers, etc.

Frequency The number of oscillations per second of a vibrating object, measured in Hertz (Hz).

Hertz The unit used to designate frequency. Specifically, the number of cycles per second.

International Building Code (IBC) A comprehensive building code published by the International Code Council (ICC) covering the fire, life, and structural safety aspects of all buildings and related structures. As of January 2003, the three largest building code organizations in America merged. Building Officials and Code Administrators International (BOCA), Southern Building Code Congress International (SBCCI), and the International Conference of Building Officials (ICBO) integrated to form the International Code Council (ICC). Municipalities may still reference earlier versions of BOCA, UBC, and SBC (as well as IBC). Also, states typically have their own building codes that may incorporate all or part of these codes.

Loudness The attribute of a sound, on a scale extending from very soft to very loud. Loudness depends most on the sound pressure or energy of the source, but it also depends upon the frequency and wave form of the source (because the human ear is more sensitive to some frequencies and forms than others).

Masking The ability of one sound to block out the perception of another sound. For example, radio static may mask voices in a nearby room. Masking may involve the intentional use of an unobtrusive background noise to cover some other specific intruding sound.

Noise Any sound which is undesirable because it interferes with speech and hearing, or is intense enough to damage hearing, or is otherwise annoying.

Noise Contours Lines or "footprints" of noise level usually drawn around a noise source (such as an airport, industrial plant or highway). The lines are generally drawn in 5-decibel increments so that they resemble elevation contours found in topographic maps.

Noise Exposure The cumulative noise reaching the ear of a person over a specified period of time (e.g., a work shift, a day, a working life, or a lifetime).

Noise Level Reduction (NLR) The difference between A-weighted sound levels indoors and outdoors.

Noise Reduction (NR) The difference, in decibels, of the average sound levels in two adjacent areas or rooms. Noise reduction could be from outside to inside, or from one room to another. Noise reduction combines the effects of the building construction plus the effect of acoustic absorption present in the receiving room. By knowing the noise reduction values and the outdoor noise levels one can determine the Noise Level Reduction (NLR).

Octave The interval between two sound frequencies having a ratio of 2. For example, if the center frequency of one octave is 125 Hz, the next octave up will be centered at 250 Hz. and the octave above that will be at 500 Hz.

Octave Band A frequency range which is one octave wide. Standard octave bands are designed by their center frequency.

Octave Band Center Frequency The average of the upper and lower frequencies of the octave. Standard octave band center frequencies in the audible range are 31.5, 63, 125, 250, 500, 1000, 2000, 4000, 8000, and 16,000 hertz.

One-Third Octave Band A frequency range which is one-third octave wide. Standard one-third octave bands are designed by their center frequency.

One-Third Octave Band Center Frequency The average of the upper and lower frequencies of the one-third octave bands. Standard one-third octave band center frequencies in the audible range are:

25.0	100	400	1600	6300
31.5	125	500	2000	8000
40.0	160	630	2500	10,000
50.0	200	800	3150	12,500
63.0	250	1000	4000	16,000
80.0	315	1250	5000	20,000

Receiver The listener who hears a sound or the measuring microphone which detects the sound transmitted by the source.

Reverberation The persistence of sound in an enclosed space, as a result of multiple reflections, after the sound source has stopped. The more absorptive the room is, the shorter the reverberation time will be. Generally, if the reverberation time is too short, people feel that the room is "dead" while if it is too long, there is confusion among sounds.

Shielding The ability of hills or structures to physically block sound or create shadow zones where sound levels are reduced.

Sound Absorption The ability of sound-absorbing materials to trap sound and convert it to heat or some other form of energy.

Sound Insulation Reducing the sound level inside a building through the use of specific building construction materials, and component assemblies which provide noise reduction.

Sound Transmission Class (STC) A single-number rating derived from measured values of transmission loss, in accordance with ASTM Classification E413, "Determination of Sound Transmission Class". It provides an evaluation of the sound-isolating properties of built construction against sounds of speech, radio, television, etc.

Sound Transmission Loss (TL) A measure of a built construction's ability to reduce sound passing through it, expressed in decibels.

Source The object which generates the sound.

Southern Building Code (SBC) See *International Building Code*.

Spectral Characteristics/Spectrum The frequency content of the noise produced by the source.

Structureborne Sound Sound energy transmitted through a solid medium such as the building structure.

Thermal Insulation A material or assembly of materials used primarily to provide resistance to heat flow.

TL See Sound Transmission Loss.

Uniform Building Code (UBC) See *International Building Code*.

Appendix E. Housing Survey

Appendix E-1. General Survey of Airport Influence Area

STUDY HOUSE NO. <i>General Observation</i>	ADDRESS: <i>Airport Influence Area</i>	PARCEL NUMBER:	
1) Units that are: Rough Percentage %			
a) Single Family	79	<i>By far, the lions share</i>	
b) Duplex	5	<i>Scattered throughout area</i>	
c) Townhome	<i>Less than 1</i>		
d) Apartment (Multifamily)	5		
e) Mobile Home	10	<i>Older homes, closer to Influence Area 'C'</i>	
2) Single Family Home Rough Percentage %			
a) 1 story	75		
b) 1.5 story	<i>Less than 1</i>		
c) 2 story	24		
d) 3 story	<i>Less than 1</i>		
3) Single Family Home: What are the most typical home sizes?			
a) Approximate square feet	1800 - 2000	<i>Larger houses are being developed further out from airport, around 2500 sf</i>	
b) Number of bedrooms	3-4		
4) What insulation R-value required/commonly used for roof?			
4:12 <i>common 4 to 6 feet</i>		COMMENTS: <i>Older homes (Pre-1990) have lower slope, newer ones towards the 4: 12 to 6:12 slopes</i>	
5) What is the approximate depth of roof truss or joist?			
99.5% <i>Wood</i>		COMMENTS: <i>An all masonry home is very unlikely</i>	
6) Rough Percentage of residences that are Solid Masonry vs. Wood Frame			
7) How Common?			
	Façade Only	Whole House	COMMENTS:
a) Brick	<i>Accent</i>	<i>Nil</i>	<i>Accent only, whole street façade is rare</i>
b) Block	<i>Not very</i>	<i>Nil</i>	
c) Stone (veneer)	<i>Accent</i>	<i>Nil</i>	<i>Accent only, whole street façade is rare</i>
d) Stucco	<i>Accent</i>	<i>Nil</i>	<i>Accent and whole street façade is 50/50 split</i>
8) More Common 2x4 or 2x6 Rough Percentage %			
2 x 4		COMMENTS: <i>2 X 4 is about 90% of the stick built homes.</i>	
9) Sheathing Type for wood- framed houses? (OSB, Insulation Board i.e. thermoply or energy brace)			
a) Existing	OSB	<i>Roof and walls</i>	
b) New	OSB	<i>Roof and walls, Thermoply becoming popular to replace OSB where not needed for seismic</i>	
10) How thick is drywall?			
a) Is plaster used in existing homes?	<i>½-inch</i>	COMMENTS: <i>Only in more historical or vintage locations. Too labor intensive.</i>	
11) Your opinion on Sound Installation Treatments:			
a) For Existing Construction: Additional layers of gypsum board?		<i>Author believes few people would see benefit over inconvenience, even if they were not paying for it.</i>	

b) For New Construction: Resilient Channels, 2x6 Studs or Staggered Studs?		<i>Not likely to meet acceptance by building contractors.</i>
12) Opinions on Ceiling Treatments:	COMMENTS:	
a) For Existing Construction: Additional layers of gypsum board?		<i>Helpful, but few people will see the benefit</i>
b) For New Construction: Resilient Channels?		<i>Homebuilders will not support this additional effort</i>
c) "False": Vaulted ceilings (sloped ceiling with small attic space above)?		<i>Most roof trusses are pre-manufactured gang nail type with profiles as varies as the neighbors. Scissor trusses are common with a 3:13 interior slope and 5:12 or more on the exterior side.</i>
13) Are Storm Windows acceptable as a sound insulation modification?	<i>Not normal, see #18</i>	COMMENTS:
14) Are Skylights common in this area?	<i>Not typical</i>	COMMENTS:
15) R-value requirements	Typical Value?	COMMENTS:
a) Windows		<i>Extruded vinyl for the newer homes, extruded aluminum for the older ones</i>
b) Doors		<i>Solid wood doors for front are norm. Some have steel wrap on front face.</i>
16) What window styles are most common?	<i>Sliders and casements</i>	COMMENTS:
17) Storm doors for swinging doors typical?	<i>Not typical</i>	COMMENTS:
18) Slider or French Doors Typical?	<i>Patio side or rear side</i>	
a) Your opinion on secondary French doors (storm doors)?	<i>Not Common</i>	COMMENTS: <i>People like to leave there front doors closed, little need for front storm doors</i>
19) We assume that all swinging doors swing inward. Is this usually true?	<i>Yes</i>	COMMENTS:
20) Type of Siding Rough Percentage %	COMMENTS:	
a) Vinyl	<i>Less than 1%</i>	
b) Aluminum	<i>Less than 1%</i>	
c) Handiplank	<i>Less than 1%</i>	
d) Wood	<i>95%</i>	<i>Molded or shaped MDF siding by far the norm.</i>
e) EIFS	<i>Accent</i>	<i>Street front accent or street façade only</i>
f) Asbestos	<i>Less than 1%</i>	
21) What is most common: Full basements, Crawl spaces or Slabs?	<i>Crawl Spaces</i>	COMMENTS: <i>Most of the homes are built on a shallow crawl-space. Basements are rare. Older homes and newer patio homes are built slab on grade. Few patio homes are within the influence area.</i>
22) Are vaulted ceilings common in existing or new construction?		COMMENTS: <i>Newer homes tend to have vaulted ceilings as part of the lower level living areas. Older homes typically did not contain vaulted ceilings. Many upper-end homes have vaulted ceilings on all stories.</i>
23) Are there standards for Fresh air, Ventilation, and Circulation aside from Heat and Air Conditioning?	<i>Yes</i>	COMMENTS: <i>Only related to ventilation of attic or crawl spaces. Fixed louver venting of attic or crawlspace is 1 sf (net)/150 sf (attic or crawlspace area), mechanical venting is 0.2 cfm/sf.</i>
24) Is Central Air common in existing homes?	<i>Yes</i>	

a) Do existing homes use window or thru-wall air conditioners?	Limited	COMMENTS: Older homes have roof mounted swamp coolers, with few window or thru wall A/C units. Since say 1980, most homes have whole house A/C systems.
25) Heat: Are forced hot air systems or radiators more common?	Forced Air	COMMENTS: Steam radiators or baseboard convectors not common in homes around the airport influence area.
26) Fireplaces common in this area?	Yes	
a) Would the addition of a sound-insulating cap on a chimney be okay	Yes See comments	COMMENTS: Older homes were masonry chimneys wrapping both wood burning fireplace and furnace flues. Few had spark caps. Newer homes contain gas fireplaces, with lightweight flue pipe or chimney construction. Sound insulating cap would offer little, in writer's opinion.

Appendix E-2. Survey of House 1

STUDY HOUSE NO. 001	ADDRESS: 3701 East Alta Ridge Court, Boise		PARCEL NUMBER: R8224270050
1) Units that are:			
Rough Percentage %	COMMENTS:		
f) Single Family	X	Built 2000	
g) Duplex			
h) Townhome			
i) Apartment (Multifamily)			
j) Mobile Home			
2) Single Family Home			
Rough Percentage %	COMMENTS:		
e) 1 story			
f) 1.5 story			
g) 2 story	X		
h) 3 story			
3) Single Family Home: What are the most typical home sizes?			
COMMENTS:			
c) Approximate square feet	2600		
d) Number of bedrooms	5		
4) What insulation R-value required/commonly used for roof?			
		COMMENTS: Cannot be verified, but presume an R-30 blown-in insulation between roof trusses.	
5) What is the approximate depth of roof truss or joist?			
6-8 feet		COMMENTS: Roof structure most likely pre-engineered, gang nailed roof trusses. Open air attic vents at gable ends.	
6) Rough Percentage of residences that are Solid Masonry vs. Wood Frame			
Wood		COMMENTS: Nearly 100% are wood framed.	
7) How Common?			
	Façade Only	Whole House	COMMENTS:
e) Brick	Less than 5%		Accent only
f) Block			
g) Stone (veneer)			
h) Stucco			
8) More Common 2x4 or 2x6 Rough Percentage %			
2 x 4		COMMENTS:	
9) Sheathing Type for wood-framed houses? (OSB, Insulation Board i.e. thermoply or energy brace)			
COMMENTS: Age of this house would promote use of OSB or Thermoply sheathing rather than plywood. Presume MDF lap siding over building paper (not "housewrap") over sheathing attached to 2 x 4 framing.			
c) Existing	X	Asphalt Shingles over felt, over OSB	
d) New			
10) How thick is drywall?			
		COMMENTS: Assume ½-inch material	
b) Is plaster used in existing homes?		Not likely	
11) Your opinion on Sound Installation Treatments:			
COMMENTS:			
c) For Existing Construction: Additional layers of gypsum board?		Doubtful that residents would support the inconvenience of the installation, however, that question has not been brought forth directly to the homeowners.	

d) For New Construction: Resilient Channels, 2x6 Studs or Staggered Studs?		N/A
12) Opinions on Ceiling Treatments:	COMMENTS:	
d) For Existing Construction: Additional layers of gypsum board?		<i>Doubtful that residents would support the inconvenience of the installation, however, that question has not been brought forth directly to the homeowners.</i>
e) For New Construction: Resilient Channels?		N/A
f) "False": Vaulted ceilings (sloped ceiling with small attic space above)?		N/A
13) Are Storm Windows acceptable as a sound insulation modification?	No Storm	COMMENTS: Storm windows are not widely used here in BOI. Newer homes have insulated glazing within extruded vinyl frames.
14) Are Skylights common in this area?	No Skylites	COMMENTS:
15) R-value requirements	Typical Value?	COMMENTS:
c) Windows		Slider metal window, non insulated (R<1.0), Insulated Vinyl (R-20)
d) Doors		Solid wood in wood frame (R-2.5), Steel door in wood frame (R-6)
16) What window styles are most common?	Sliders	COMMENTS: See storm windows.
17) Storm doors for swinging doors typical?	No Storm	COMMENTS: Not typical
18) Slider or French Doors Typical?	Patio side rear side	
b) Your opinion on secondary French doors (storm doors)?		COMMENTS: Not typical
19) We assume that all swinging doors swing inward. Is this usually true?	Yes	COMMENTS:
20) Type of Siding Rough Percentage %	COMMENTS:	
g) Vinyl		
h) Aluminum		
i) Handiplank		
j) Wood	98%	Molded or shaped MDF siding
k) EIFS		
l) Asbestos		
21) What is most common: Full basements, Crawl spaces or Slabs?	Crawl Space	COMMENTS:
22) Are vaulted ceilings common in existing or new construction?	Yes	COMMENTS: Part of first floor living
23) Are there standards for Fresh air, Ventilation, and Circulation aside from Heat and Air Conditioning?	Yes	COMMENTS: Only related to ventilation of attic or crawl spaces. Fixed louver venting of attic or crawlspace is 1 sf (net)/150 sf (attic or crawlspace area), mechanical venting is 0.2 cfm/sf.
24) Is Central Air common in existing homes?	Yes	
b) Do existing homes use window or thru-wall air conditioners?		COMMENTS:

<p>25) Heat: Are forced hot air systems or radiators more common?</p>	<p><i>Forced Air</i></p>	<p>COMMENTS:</p>
<p>26) Fireplaces common in this area?</p>	<p><i>Yes</i></p>	<p><i>One fireplace is reported in this house.</i></p>
<p>b) Would the addition of a sound-insulating cap on a chimney be okay</p>		<p>COMMENTS: <i>Presume a gas-fired unit. Newer construction would promote double wall insulated metal flue pipe with light construction surround.</i></p>



Appendix E-3. Survey of House 2

STUDY HOUSE NO. 002	ADDRESS: 5569 South Fuchsia Place, Boise		PARCEL NUMBER: R1525750640
1) Units that are: Rough Percentage %			
COMMENTS:			
k) Single Family	X	Built 1994	
l) Duplex			
m) Townhome			
n) Apartment (Multifamily)			
o) Mobile Home			
2) Single Family Home Rough Percentage %			
COMMENTS:			
i) 1 story			
j) 1.5 story			
k) 2 story	X		
l) 3 story			
3) Single Family Home: What are the most typical home sizes?			
COMMENTS:			
e) Approximate square feet	2000		
f) Number of bedrooms	4		
4) What insulation R-value required/commonly used for roof?			
		COMMENTS: Cannot be verified, but presume an R-30 blown-in insulation between roof trusses.	
5) What is the approximate depth of roof truss or joist?			
5-6 feet		COMMENTS: Roof structure most likely pre-engineered, gang nailed roof trusses. Open air attic vents at gable ends.	
6) Rough Percentage of residences that are Solid Masonry vs. Wood Frame			
Wood		COMMENTS: Nearly 100% are wood framed.	
7) How Common?			
Façade Only		Whole House	COMMENTS:
i) Brick	Less than 5%		Accent only
j) Block			
k) Stone (veneer)			
l) Stucco			
8) More Common 2x4 or 2x6 Rough Percentage %			
2 x 4		COMMENTS:	
9) Sheathing Type for wood- framed houses? (OSB, Insulation Board i.e. thermoply or energy brace)			
COMMENTS: Age of this house would promote use of OSB or Thermoply sheathing rather than plywood. Presume MDF board siding over building paper (not "housewrap") over sheathing attached to 2 x 4 framing.			
e) Existing	X	Composite Asphalt Shingles over sheathing	
f) New			
10) How thick is drywall?			
COMMENTS: Assume ½-inch material			
c) Is plaster used in existing homes?		Not likely	
11) Your opinion on Sound Installation Treatments:			
COMMENTS:			
e) For Existing Construction: Additional layers of gypsum board?		Doubtful that residents would support the inconvenience of the installation, however, that question has not been brought forth directly to the homeowners.	
f) For New Construction: Resilient Channels, 2x6 Studs or Staggered Studs?		N/A	

12) Opinions on Ceiling Treatments:	COMMENTS:	
g) For Existing Construction: Additional layers of gypsum board?		<i>Doubtful that residents would support the inconvenience of the installation, however, that question has not been brought forth directly to the homeowners.</i>
h) For New Construction: Resilient Channels?		<i>N/A</i>
i) "False": Vaulted ceilings (sloped ceiling with small attic space above)?		<i>N/A</i>
13) Are Storm Windows acceptable as a sound insulation modification?	<i>No Storm</i>	COMMENTS: <i>Storm windows are not widely used here in BOI. This home has insulated glazing within extruded vinyl frames.</i>
14) Are Skylights common in this area?	<i>Skylights</i>	COMMENTS:
15) R-value requirements	Typical Value?	COMMENTS:
e) Windows		<i>Slider metal window, non insulated (R<1.0), Insulated Vinyl (R-20)</i>
f) Doors		<i>Solid wood in wood frame (R-2.5), Steel door in wood frame (R-6)</i>
16) What window styles are most common?	<i>Sliders</i>	COMMENTS: <i>See storm windows.</i>
17) Storm doors for swinging doors typical?	<i>Storm Door</i>	COMMENTS:
18) Slider or French Doors Typical?		
c) Your opinion on secondary French doors (storm doors)?		COMMENTS: <i>Not typical</i>
19) We assume that all swinging doors swing inward. Is this usually true?	<i>Yes</i>	COMMENTS:
20) Type of Siding Rough Percentage %	COMMENTS:	
m) Vinyl		
n) Aluminum		
o) Handiplank		
p) Wood	<i>100%</i>	<i>Molded or shaped MDF siding</i>
q) EIFS		
r) Asbestos		
21) What is most common: Full basements, Crawl spaces or Slabs?	<i>Crawl Space</i>	COMMENTS:
22) Are vaulted ceilings common in existing or new construction?		COMMENTS: <i>Part of first floor living</i>
23) Are there standards for Fresh air, Ventilation, and Circulation aside from Heat and Air Conditioning?	<i>Yes</i>	COMMENTS: <i>Only related to ventilation of attic or crawl spaces. Fixed louver venting of attic or crawlspace is 1 sf (net)/150 sf (attic or crawlspace area), mechanical venting is 0.2 cfm/sf.</i>
24) Is Central Air common in existing homes?	<i>Yes</i>	
c) Do existing homes use window or thru-wall air conditioners?	<i>N/A</i>	COMMENTS:
25) Heat: Are forced hot air systems or radiators more common?	<i>Forced Air</i>	COMMENTS:

26) Fireplaces common in this area?	Yes	<i>One fireplace is reported in this house.</i>
c) Would the addition of a sound-insulating cap on a chimney be okay		COMMENTS: <i>Presume this is a gas-fired type with light gage metal flue and cap.</i>



Appendix E-4. Survey of House 3

STUDY HOUSE NO. 003	ADDRESS: 4006 West Normandie, Boise		PARCEL NUMBER: R1580730270
1) Units that are:			
Rough Percentage %	COMMENTS:		
p) Single Family	X	Built 1960	
q) Duplex			
r) Townhome			
s) Apartment (Multifamily)			
t) Mobile Home			
2) Single Family Home			
Rough Percentage %	COMMENTS:		
m) 1 story	X		
n) 1.5 story			
o) 2 story			
p) 3 story			
3) Single Family Home: What are the most typical home sizes?			
COMMENTS:			
g) Approximate square feet	1400		
h) Number of bedrooms	3		
4) What insulation R-value required/commonly used for roof?			
		COMMENTS: Cannot be verified, but presume an R-19 batt blanket insulation between roof trusses.	
5) What is the approximate depth of roof truss or joist?			
1-3 feet		COMMENTS: Roof structure most likely pre-engineered, gang nailed roof trusses.	
6) Rough Percentage of residences that are Solid Masonry vs. Wood Frame			
Wood		COMMENTS: Nearly 100% are wood framed.	
7) How Common?			
	Façade Only	Whole House	COMMENTS:
m) Brick			
n) Block			
o) Stone (veneer)			
p) Stucco			
8) More Common 2x4 or 2x6 Rough Percentage %			
2 x 4		COMMENTS:	
9) Sheathing Type for wood-framed houses? (OSB, Insulation Board i.e. thermoply or energy brace)			
COMMENTS: Age of this house would promote use of plywood sheathing rather than OSB or Thermoply. Presume plank siding over building paper over sheathing attached to 2 x 4 framing.			
g) Existing	Plywood	Composite asphalt Shingles over sheathing	
h) New			
10) How thick is drywall?			
		COMMENTS: Assume ½-inch material	
d) Is plaster used in existing homes?		Not likely	
11) Your opinion on Sound Installation Treatments:			
COMMENTS:			
g) For Existing Construction: Additional layers of gypsum board?		Doubtful that residents would support the inconvenience of the installation, however, that question has not been brought forth directly to the homeowners.	
h) For New Construction: Resilient Channels, 2x6 Studs or Staggered Studs?		N/A	

12) Opinions on Ceiling Treatments:	COMMENTS:	
j) For Existing Construction: Additional layers of gypsum board?		<i>Doubtful that residents would support the inconvenience of the installation, however, that question has not been brought forth directly to the homeowners.</i>
k) For New Construction: Resilient Channels?		<i>N/A</i>
l) "False": Vaulted ceilings (sloped ceiling with small attic space above)?		<i>N/A</i>
13) Are Storm Windows acceptable as a sound insulation modification?	<i>No Storm Windows</i>	COMMENTS: <i>Storm windows are not widely used here in BOI. Older homes have extruded metal-framed windows with single glazing, rather than wood. Newer homes are more likely to be insulated glazing within extruded vinyl frames.</i>
14) Are Skylights common in this area?	<i>No Skylights</i>	COMMENTS:
15) R-value requirements	Typical Value?	COMMENTS:
g) Windows		<i>Slider metal window, non insulated (R<1.0), Insulated Vinyl (R-20)</i>
h) Doors		<i>Solid wood in wood frame (R-2.5), Steel door in wood frame (R-6)</i>
16) What window styles are most common?	<i>Sliders</i>	COMMENTS: <i>See storm windows.</i>
17) Storm doors for swinging doors typical?	<i>Storm Door</i>	COMMENTS: <i>Older homes seem to have storm doors.</i>
18) Slider or French Doors Typical?		
d) Your opinion on secondary French doors (storm doors)?		COMMENTS: <i>Not typical</i>
19) We assume that all swinging doors swing inward. Is this usually true?	<i>Yes</i>	COMMENTS:
20) Type of Siding Rough Percentage %	COMMENTS:	
s) Vinyl		
t) Aluminum		
u) Handiplank		
v) Wood	<i>100%</i>	<i>Lap or bevel wood siding planks fastened directly to sheathing</i>
w) EIFS		
x) Asbestos		
21) What is most common: Full basements, Crawl spaces or Slabs?	<i>Slab On Grade</i>	COMMENTS:
22) Are vaulted ceilings common in existing or new construction?	<i>No</i>	COMMENTS:
23) Are there standards for Fresh air, Ventilation, and Circulation aside from Heat and Air Conditioning?	<i>Yes</i>	COMMENTS: <i>Only related to ventilation of attic or crawl spaces. Fixed louver venting of attic or crawlspace is 1 sf (net)/150 sf (attic or crawlspace area), mechanical venting is 0.2 cfm/sf.</i>
24) Is Central Air common in existing homes?	<i>No</i>	
d) Do existing homes use window or thru-wall air conditioners?	<i>Not Visible</i>	COMMENTS:
25) Heat: Are forced hot air systems or radiators more common?	<i>Forced Air</i>	COMMENTS:

<p>26) Fireplaces common in this area?</p>	<p>Yes</p>	<p><i>2 fireplaces are reported in this house.</i></p>
<p>d) Would the addition of a sound-insulating cap on a chimney be okay</p>		<p>COMMENTS: <i>Date of construction would presume a masonry chimney shared with the furnace flue for primary. Also must have second fireplace by metal flue in back half of roof left side.</i></p>



Appendix E-5. Survey of House 4

STUDY HOUSE NO. 004	ADDRESS: 4679 West Garden Court, Boise		PARCEL NUMBER: R05898870070
1) Units that are:			
Rough Percentage %	COMMENTS:		
u) Single Family	X	Built 2003	
v) Duplex			
w) Townhome			
x) Apartment (Multifamily)			
y) Mobile Home			
2) Single Family Home			
Rough Percentage %	COMMENTS:		
q) 1 story	X		
r) 1.5 story			
s) 2 story			
t) 3 story			
3) Single Family Home: What are the most typical home sizes?			
COMMENTS:			
i) Approximate square feet	1537		
j) Number of bedrooms	3		
4) What insulation R-value required/commonly used for roof?			
		COMMENTS: Cannot be verified, but presume an R-30 blown-in insulation between roof trusses.	
5) What is the approximate depth of roof truss or joist?			
1-3 feet		COMMENTS: Roof structure most likely pre-engineered, gang nailed roof trusses. Open air attic vents at gable ends.	
6) Rough Percentage of residences that are Solid Masonry vs. Wood Frame			
Wood		COMMENTS: Nearly 100% are wood framed.	
7) How Common?			
	Façade Only	Whole House	COMMENTS:
q) Brick			
r) Block			
s) Stone (veneer)			
t) Stucco			
8) More Common 2x4 or 2x6			
Rough Percentage %	2 x 4	COMMENTS:	
9) Sheathing Type for wood-framed houses? (OSB, Insulation Board i.e. thermoply or energy brace)			
COMMENTS: Age of this house would promote use of OSB or Thermoply sheathing rather than plywood. Presume MDF lap siding over building paper (not "housewrap") over sheathing attached to 2 x 4 framing.			
i) Existing	OSB	Asphalt Shingles over felt, over OSB	
j) New			
10) How thick is drywall?			
		COMMENTS: Assume ½-inch material	
e) Is plaster used in existing homes?		Not likely	
11) Your opinion on Sound Installation Treatments:			
COMMENTS:			
i) For Existing Construction: Additional layers of gypsum board?		Doubtful that residents would support the inconvenience of the installation, however, that question has not been brought forth directly to the homeowners.	
j) For New Construction: Resilient Channels, 2x6 Studs or Staggered Studs?		N/A	

12) Opinions on Ceiling Treatments:	COMMENTS:	
m) For Existing Construction: Additional layers of gypsum board?		<i>Doubtful that residents would support the inconvenience of the installation, however, that question has not been brought forth directly to the homeowners.</i>
n) For New Construction: Resilient Channels?		<i>N/A</i>
o) "False": Vaulted ceilings (sloped ceiling with small attic space above)?		<i>N/A</i>
13) Are Storm Windows acceptable as a sound insulation modification?	<i>No Storm Windows</i>	COMMENTS: <i>Storm windows are not widely used here in BOI. Newer homes have insulated glazing within extruded vinyl frames.</i>
14) Are Skylights common in this area?	<i>No Skylights</i>	COMMENTS:
15) R-value requirements	Typical Value?	COMMENTS:
i) Windows		<i>Slider metal window, non insulated (R<1.0), Insulated Vinyl (R-20)</i>
j) Doors		<i>Solid wood in wood frame (R-2.5), Steel door in wood frame (R-6)</i>
16) What window styles are most common?	<i>Sliders and single hung</i>	COMMENTS: <i>See storm windows.</i>
17) Storm doors for swinging doors typical?	<i>No Storm Door</i>	COMMENTS: <i>Not typical</i>
18) Slider or French Doors Typical?		
e) Your opinion on secondary French doors (storm doors)?		COMMENTS: <i>Not typical</i>
19) We assume that all swinging doors swing inward. Is this usually true?	<i>Yes</i>	COMMENTS:
20) Type of Siding Rough Percentage %	COMMENTS:	
y) Vinyl		
z) Aluminum		
aa) Handiplank		
bb) Wood	<i>100%</i>	<i>Molded or shaped MDF siding</i>
cc) EIFS		
dd) Asbestos		
21) What is most common: Full basements, Crawl spaces or Slabs?	<i>Crawl Space</i>	COMMENTS:
22) Are vaulted ceilings common in existing or new construction?	<i>Yes</i>	COMMENTS: <i>Vault probably in main living area street side</i>
23) Are there standards for Fresh air, Ventilation, and Circulation aside from Heat and Air Conditioning?	<i>Yes</i>	COMMENTS: <i>Only related to ventilation of attic or crawl spaces. Fixed louver venting of attic or crawlspace is 1 sf (net)/150 sf (attic or crawlspace area), mechanical venting is 0.2 cfm/sf.</i>
24) Is Central Air common in existing homes?	<i>Yes</i>	
e) Do existing homes use window or thru-wall air conditioners?		COMMENTS:
25) Heat: Are forced hot air systems or radiators more common?	<i>Forced Air</i>	COMMENTS:

26) Fireplaces common in this area?	Yes	<i>One fireplace is reported in this house.</i>
e) Would the addition of a sound-insulating cap on a chimney be okay		COMMENTS: <i>Newer construction would promote double wall insulated metal flue pipe with light construction surround.</i>



Appendix E-6. Survey of House 5

STUDY HOUSE NO. 005	ADDRESS: 2405 South Mobile Drive, Boise		PARCEL NUMBER: R1539610035	
1) Units that are: Rough Percentage %				
COMMENTS:				
z) Single Family	X	Construction date Unknown		
aa) Duplex				
bb) Townhome				
cc) Apartment (Multifamily)				
dd) Mobile Home				
2) Single Family Home Rough Percentage %				
COMMENTS:				
u) 1 story	X			
v) 1.5 story				
w) 2 story				
x) 3 story				
3) Single Family Home: What are the most typical home sizes?				
COMMENTS:				
k) Approximate square feet	1200 +/-			
l) Number of bedrooms	2 or 3			
4) What insulation R-value required/commonly used for roof?				
COMMENTS:		Cannot be verified, but presume an R-19 batt blanket insulation between roof trusses.		
5) What is the approximate depth of roof truss or joist?				
		0.5 to 1.5 feet	COMMENTS:	
6) Rough Percentage of residences that are Solid Masonry vs. Wood Frame				
		Wood	COMMENTS: Nearly 100% are wood framed.	
7) How Common?				
Façade Only		Whole House	COMMENTS:	
u) Brick				
v) Block				
w) Stone (veneer)				
x) Stucco				
8) More Common 2x4 or 2x6 Rough Percentage %				
		2 x 4	COMMENTS:	
9) Sheathing Type for wood- framed houses? (OSB, Insulation Board i.e. thermoply or energy brace)				
COMMENTS:		This house is a pre-manufactured unit, age unknown. Roof profile is very shallow. Presume insulation is fiberglass batt type between roof trusses		
k) Existing		Rolled roofing membrane over roof decking		
l) New				
10) How thick is drywall?				
COMMENTS:		Assume ½-inch material		
f) Is plaster used in existing homes?		Not likely		
11) Your opinion on Sound Installation Treatments:				
COMMENTS:				
k) For Existing Construction: Additional layers of gypsum board?		Doubtful that residents would support the inconvenience of the installation, however, that question has not been brought forth directly to the homeowners.		
l) For New Construction: Resilient Channels, 2x6 Studs or Staggered Studs?		N/A		

12) Opinions on Ceiling Treatments:	COMMENTS:	
p) For Existing Construction: Additional layers of gypsum board?		<i>Doubtful that residents would support the inconvenience of the installation, however, that question has not been brought forth directly to the homeowners.</i>
q) For New Construction: Resilient Channels?		<i>N/A</i>
r) "False": Vaulted ceilings (sloped ceiling with small attic space above)?		<i>N/A</i>
13) Are Storm Windows acceptable as a sound insulation modification?	<i>No Storm Windows</i>	COMMENTS: <i>Storm windows are not widely used here in BOI. Older homes have extruded metal-framed windows with single glazing, rather than wood</i>
14) Are Skylights common in this area?	<i>No Skylights</i>	COMMENTS:
15) R-value requirements	Typical Value?	COMMENTS:
k) Windows		<i>Slider metal window, non insulated (R<1.0), Insulated Vinyl (R-20)</i>
l) Doors		<i>Solid wood in wood frame (R-2.5), Steel door in wood frame (R-6)</i>
16) What window styles are most common?	<i>Sliders and single hung</i>	COMMENTS: <i>See storm windows</i>
17) Storm doors for swinging doors typical?	<i>No Storm Door</i>	COMMENTS: <i>Not typical</i>
18) Slider or French Doors Typical?		
f) Your opinion on secondary French doors (storm doors)?		COMMENTS: <i>Not typical</i>
19) We assume that all swinging doors swing inward. Is this usually true?	<i>Yes</i>	COMMENTS:
20) Type of Siding Rough Percentage %	COMMENTS:	
ee) Vinyl		
ff) Aluminum	<i>100 %</i>	
gg) Handiplank		
hh) Wood		
ii) EIFS		
jj) Asbestos		
21) What is most common: Full basements, Crawl spaces or Slabs?	<i>Skirt around structure</i>	COMMENTS: <i>Presume that there is little insulation below the floor of this structure other than that required for perimeter construction.</i>
22) Are vaulted ceilings common in existing or new construction?	<i>No</i>	COMMENTS:
23) Are there standards for Fresh air, Ventilation, and Circulation aside from Heat and Air Conditioning?	<i>Yes</i>	COMMENTS: <i>Only related to ventilation of attic or crawl spaces. Fixed louver venting of attic or crawlspace is 1 sf (net)/150 sf (attic or crawlspace area), mechanical venting is 0.2 cfm/sf.</i>
24) Is Central Air common in existing homes?	<i>No</i>	
f) Do existing homes use window or thru-wall air conditioners?	<i>Not visible</i>	COMMENTS:
25) Heat: Are forced hot air systems or radiators more common?	<i>Forced Air</i>	COMMENTS:

26) Fireplaces common in this area?	<i>No</i>	
f) Would the addition of a sound-insulating cap on a chimney be okay		COMMENTS:



Appendix E-7. Survey of House 6

STUDY HOUSE NO. 006	ADDRESS: 2897 South Merrimac Avenue, Boise		PARCEL NUMBER: R1294350120
1) Units that are:			
Rough Percentage %	COMMENTS:		
ee) Single Family	X	Built 1998	
ff) Duplex			
gg) Townhome			
hh) Apartment (Multifamily)			
ii) Mobile Home			
2) Single Family Home			
Rough Percentage %	COMMENTS:		
y) 1 story			
z) 1.5 story			
aa) 2 story	X		
bb) 3 story			
3) Single Family Home: What are the most typical home sizes?			
COMMENTS:			
m) Approximate square feet	1850		
n) Number of bedrooms	4		
4) What insulation R-value required/commonly used for roof?			
		COMMENTS: Cannot be verified, but presume an R-30 blown-in fiber blanket insulation between roof trusses.	
5) What is the approximate depth of roof truss or joist?			
2 - 4 feet		COMMENTS: Roof structure most likely pre-engineered, gang nailed roof trusses.	
6) Rough Percentage of residences that are Solid Masonry vs. Wood Frame			
Wood		COMMENTS: Nearly 100% are wood framed.	
7) How Common?			
	Façade Only	Whole House	COMMENTS:
y) Brick	X		Accent Only at Base
z) Block			
aa) Stone (veneer)			
bb) Stucco			
8) More Common 2x4 or 2x6 Rough Percentage %			
2 x 4		COMMENTS:	
9) Sheathing Type for wood-framed houses? (OSB, Insulation Board i.e. thermoply or energy brace)			
COMMENTS: Age of this house would promote use of OSB or Thermoply rather than plywood. Presume composite wood siding over building paper (not "house wrap") over sheathing attached to 2 x 4 framing.			
m) Existing			
n) New	OSB	Asphalt Shingles over roofing felt over OSB	
10) How thick is drywall?			
		COMMENTS: Assume ½-inch material	
g) Is plaster used in existing homes?		Not likely	
11) Your opinion on Sound Installation Treatments:			
COMMENTS:			
m) For Existing Construction: Additional layers of gypsum board?		Doubtful that residents would support the inconvenience of the installation, however, that question has not been brought forth directly to the homeowners.	
n) For New Construction: Resilient Channels, 2x6 Studs or Staggered Studs?		N/A	

12) Opinions on Ceiling Treatments:	COMMENTS:	
s) For Existing Construction: Additional layers of gypsum board?		<i>Doubtful that residents would support the inconvenience of the installation, however, that question has not been brought forth directly to the homeowners.</i>
t) For New Construction: Resilient Channels?	<i>Gyp. Bd. Secured to framing</i>	<i>N/A</i>
u) "False": Vaulted ceilings (sloped ceiling with small attic space above)?		<i>Limited to certain areas accent of house, presumed living room and master bedroom.</i>
13) Are Storm Windows acceptable as a sound insulation modification?	<i>No Storm Windows</i>	COMMENTS: <i>Storm windows are not widely used here in BOI. This home contains insulated glazing within extruded vinyl frames.</i>
14) Are Skylights common in this area?	<i>No Skylights</i>	COMMENTS:
15) R-value requirements	Typical Value?	COMMENTS:
m) Windows		<i>Slider metal window, non insulated (R<1.0), Insulated Vinyl (R-20)</i>
n) Doors		<i>Solid wood in wood frame (R-2.5), Steel door in wood frame (R-6)</i>
16) What window styles are most common?	<i>Sliders</i>	COMMENTS: <i>See Storm windows.</i>
17) Storm doors for swinging doors typical?	<i>Storm Door</i>	COMMENTS:
18) Slider or French Doors Typical?		
g) Your opinion on secondary French doors (storm doors)?		COMMENTS: <i>Not typical</i>
19) We assume that all swinging doors swing inward. Is this usually true?	<i>Yes</i>	COMMENTS:
20) Type of Siding Rough Percentage %	COMMENTS:	
kk) Vinyl		
ll) Aluminum		
mm) Handiplank		
nn) Wood	<i>90%</i>	
oo) EIFS		
pp) Asbestos		
21) What is most common: Full basements, Crawl spaces or Slabs?	<i>Crawlspace</i>	COMMENTS:
22) Are vaulted ceilings common in existing or new construction?	<i>Yes</i>	COMMENTS: <i>Probably part of entrance vestibule or main level living area.</i>
23) Are there standards for Fresh air, Ventilation, and Circulation aside from Heat and Air Conditioning?	<i>Yes</i>	COMMENTS: <i>Only related to ventilation of attic or crawl spaces. Fixed louver venting of attic or crawlspace is 1 sf (net)/150 sf (attic or crawlspace area), mechanical venting is 0.2 cfm/sf.</i>
24) Is Central Air common in existing homes?	<i>Yes</i>	
g) Do existing homes use window or thru-wall air conditioners?		COMMENTS:
25) Heat: Are forced hot air systems or radiators more common?	<i>Forced Air</i>	COMMENTS:

26) Fireplaces common in this area?	Yes	<i>One fireplace is reported in this house.</i>
g) Would the addition of a sound-insulating cap on a chimney be okay		COMMENTS: <i>Light-gage metal flue.</i>



Appendix E-8. Survey of House 7

STUDY HOUSE NO. 007	ADDRESS: 3425 South Beverly Street, Boise		PARCEL NUMBER: R8043270320
1) Units that are:			
Rough Percentage %	COMMENTS:		
jj) Single Family	X	Built 1977	
kk) Duplex			
ll) Townhome			
mm) Apartment (Multifamily)			
nn) Mobile Home			
2) Single Family Home			
Rough Percentage %	COMMENTS:		
cc) 1 story	X		
dd) 1.5 story			
ee) 2 story			
ff) 3 story			
3) Single Family Home: What are the most typical home sizes?			
COMMENTS:			
o) Approximate square feet	2172		
p) Number of bedrooms	3		
4) What insulation R-value required/commonly used for roof?			
		COMMENTS: Cannot be verified, but presume an R-19 batt blanket insulation between roof trusses.	
5) What is the approximate depth of roof truss or joist?			
1 - 4 feet		COMMENTS: Roof structure most likely pre-engineered, gang nailed roof trusses.	
6) Rough Percentage of residences that are Solid Masonry vs. Wood Frame			
Wood		COMMENTS: Nearly 100% are wood framed.	
7) How Common?			
	Façade Only	Whole House	COMMENTS:
cc) Brick	X		Sill to Soffit, Street side only
dd) Block			
ee) Stone (veneer)			
ff) Stucco			
8) More Common 2x4 or 2x6 Rough Percentage %			
2 x 4		COMMENTS:	
9) Sheathing Type for wood-framed houses? (OSB, Insulation Board i.e. thermoply or energy brace)			
COMMENTS: Age of this house would promote use of plywood sheathing rather than OSB or Thermoply. Presume plank siding over building paper over sheathing attached to 2 x 4 framing.			
o) Existing			
p) New			
		Wood Shingles over lath strips between trusses	
10) How thick is drywall?			
COMMENTS: Assume ½-inch material			
h) Is plaster used in existing homes?		Not likely	
11) Your opinion on Sound Installation Treatments:			
COMMENTS:			
o) For Existing Construction: Additional layers of gypsum board?		Doubtful that residents would support the inconvenience of the installation, however, that question has not been brought forth directly to the homeowners.	
p) For New Construction: Resilient Channels, 2x6 Studs or Staggered Studs?		N/A	

12) Opinions on Ceiling Treatments:	COMMENTS:	
v) For Existing Construction: Additional layers of gypsum board?		<i>Doubtful that residents would support the inconvenience of the installation, however, that question has not been brought forth directly to the homeowners.</i>
w) For New Construction: Resilient Channels?	<i>Gyp. Bd. Secured to framing</i>	<i>N/A</i>
x) "False": Vaulted ceilings (sloped ceiling with small attic space above)?		<i>N/A</i>
13) Are Storm Windows acceptable as a sound insulation modification?	<i>No Storm Windows</i>	COMMENTS: <i>Storm windows are not widely used here in BOI. Older homes have extruded metal-framed windows with single glazing, rather than wood. Newer homes are more likely to be insulated glazing within extruded vinyl frames.</i>
14) Are Skylights common in this area?	<i>No Skylights</i>	COMMENTS:
15) R-value requirements	Typical Value?	COMMENTS:
o) Windows		<i>Slider metal window, non insulated (R<1.0), Insulated Vinyl (R-20)</i>
p) Doors		<i>Solid wood in wood frame (R-2.5), Steel door in wood frame (R-6)</i>
16) What window styles are most common?	<i>Sliders</i>	COMMENTS: <i>See storm windows.</i>
17) Storm doors for swinging doors typical?	<i>Storm Door</i>	COMMENTS: <i>Not typical</i>
18) Slider or French Doors Typical?		
h) Your opinion on secondary French doors (storm doors)?		COMMENTS: <i>Not typical</i>
19) We assume that all swinging doors swing inward. Is this usually true?	<i>Yes</i>	COMMENTS:
20) Type of Siding Rough Percentage %	COMMENTS:	
qq) Vinyl		
rr) Aluminum		
ss) Handiplank		
tt) Wood	<i>70%</i>	
uu) EIFS		
vv) Asbestos		
21) What is most common: Full basements, Crawl spaces or Slabs?	<i>Crawlspace</i>	COMMENTS:
22) Are vaulted ceilings common in existing or new construction?	<i>No</i>	COMMENTS:
23) Are there standards for Fresh air, Ventilation, and Circulation aside from Heat and Air Conditioning?	<i>Yes</i>	COMMENTS: <i>Only related to ventilation of attic or crawl spaces. Fixed louver venting of attic or crawlspace is 1 sf (net)/150 sf (attic or crawlspace area), mechanical venting is 0.2 cfm/sf.</i>
24) Is Central Air common in existing homes?	<i>Yes</i>	
h) Do existing homes use window or thru-wall air conditioners?	<i>Not visible</i>	COMMENTS:
25) Heat: Are forced hot air systems or radiators more common?	<i>Forced Air</i>	COMMENTS:

26) Fireplaces common in this area?	Yes	<i>One fireplace is reported in this house.</i>
h) Would the addition of a sound-insulating cap on a chimney be okay		COMMENTS: <i>Wood burning with Furnace Flue in Masonry surround.</i>



Appendix E-9. Survey of House 8

STUDY HOUSE NO. 008	ADDRESS: 5071 South Chinook Avenue, Boise		PARCEL NUMBER: R4221320535
1) Units that are:			
Rough Percentage %	COMMENTS:		
oo) Single Family	X	Built 1983	
pp) Duplex			
qq) Townhome			
rr) Apartment (Multifamily)			
ss) Mobile Home			
2) Single Family Home			
Rough Percentage %	COMMENTS:		
gg) 1 story	X		
hh) 1.5 story			
ii) 2 story			
jj) 3 story			
3) Single Family Home: What are the most typical home sizes?			
COMMENTS:			
q) Approximate square feet	2088		
r) Number of bedrooms	3		
4) What insulation R-value required/commonly used for roof?			
		COMMENTS: Cannot be verified, but presume an R-19 batt blanket insulation between roof trusses.	
5) What is the approximate depth of roof truss or joist?			
1 - 4 feet		COMMENTS: Roof structure most likely pre-engineered, gang nailed roof trusses.	
6) Rough Percentage of residences that are Solid Masonry vs. Wood Frame			
Wood		COMMENTS: Nearly 100% are wood framed.	
7) How Common?			
	Façade Only	Whole House	COMMENTS:
gg) Brick	X		Street side only
hh) Block			
ii) Stone (veneer)			
jj) Stucco	X		Sill plate to top plate, wood siding above at gables
8) More Common 2x4 or 2x6 Rough Percentage %			
2 x 4		COMMENTS:	
9) Sheathing Type for wood-framed houses? (OSB, Insulation Board i.e. thermoply or energy brace)			
COMMENTS:			
q) Existing	X	Wood Shingles over lath strips between wood trusses	
r) New	N/A		
10) How thick is drywall?			
		COMMENTS: Assume ½-inch material	
i) Is plaster used in existing homes?		Not likely	
11) Your opinion on Sound Installation Treatments:			
COMMENTS:			
q) For Existing Construction: Additional layers of gypsum board?		Doubtful that residents would support the inconvenience of the installation, however, that question has not been brought forth directly to the homeowners.	
r) For New Construction: Resilient Channels, 2x6 Studs or Staggered Studs?		N/A	

12) Opinions on Ceiling Treatments:	COMMENTS:	
y) For Existing Construction: Additional layers of gypsum board?		<i>Doubtful that residents would support the inconvenience of the installation, however, that question has not been brought forth directly to the homeowners.</i>
z) For New Construction: Resilient Channels?		N/A
aa) "False": Vaulted ceilings (sloped ceiling with small attic space above)?		N/A
13) Are Storm Windows acceptable as a sound insulation modification?	<i>No Storm Windows</i>	COMMENTS: <i>Storm windows are not widely used here in BOI. Older homes have extruded metal-framed windows with single glazing, rather than wood. Newer homes are more likely to be insulated glazing within extruded vinyl frames.</i>
14) Are Skylights common in this area?	<i>2 Skylights</i>	COMMENTS:
15) R-value requirements	Typical Value?	COMMENTS:
q) Windows		<i>Slider metal window, non insulated (R<1.0), Insulated Vinyl (R-20)</i>
r) Doors		<i>Solid wood in wood frame (R-2.5), Steel door in wood frame (R-6)</i>
16) What window styles are most common?	<i>Casements and Sliders</i>	COMMENTS: <i>See storm windows.</i>
17) Storm doors for swinging doors typical?	<i>Storm Door</i>	COMMENTS: <i>Not typical</i>
18) Slider or French Doors Typical?		
i) Your opinion on secondary French doors (storm doors)?		COMMENTS:
19) We assume that all swinging doors swing inward. Is this usually true?	<i>Yes</i>	COMMENTS:
20) Type of Siding Rough Percentage %	COMMENTS:	
ww) Vinyl		
xx) Aluminum		
yy) Handiplank		
zz) Wood	<i>10%</i>	<i>Gable accents only</i>
aaa) EIFS		
bbb) Asbestos		
21) What is most common: Full basements, Crawl spaces or Slabs?	<i>Crawlspace</i>	COMMENTS:
22) Are vaulted ceilings common in existing or new construction?	<i>No</i>	COMMENTS:
23) Are there standards for Fresh air, Ventilation, and Circulation aside from Heat and Air Conditioning?	<i>Yes</i>	COMMENTS: <i>Only related to ventilation of attic or crawl spaces. Fixed louver venting of attic or crawlspace is 1 sf (net)/150 sf (attic or crawlspace area), mechanical venting is 0.2 cfm/sf.</i>
24) Is Central Air common in existing homes?	<i>Yes</i>	
i) Do existing homes use window or thru-wall air conditioners?		COMMENTS:
25) Heat: Are forced hot air systems or radiators more common?	<i>Forced Air</i>	COMMENTS:

26) Fireplaces common in this area?	Yes	<i>One fireplace is reported in this house.</i>
i) Would the addition of a sound-insulating cap on a chimney be okay		COMMENTS: <i>Location of fireplace uncertain in this house. Date of construction would presume a masonry chimney shared with the furnace for primary flue.</i>



Appendix E-10. Survey of House 9

STUDY HOUSE NO. 009	ADDRESS: 5580 South Tinker Street, Boise		PARCEL NUMBER: R8223000375
1) Units that are:			
Rough Percentage %	COMMENTS:		
tt) Single Family	X	Built 1973	
uu) Duplex			
vv) Townhome			
ww) Apartment (Multifamily)			
xx) Mobile Home			
2) Single Family Home			
Rough Percentage %	COMMENTS:		
kk) 1 story	X		
ll) 1.5 story			
mm) 2 story			
nn) 3 story			
3) Single Family Home: What are the most typical home sizes?			
COMMENTS:			
s) Approximate square feet	2144		
t) Number of bedrooms	3		
4) What insulation R-value required/commonly used for roof?			
		COMMENTS: Cannot be verified, but presume an R-19 batt blanket insulation between roof trusses.	
5) What is the approximate depth of roof truss or joist?			
1 - 4 feet		COMMENTS: Roof structure most likely pre-engineered, gang nailed roof trusses.	
6) Rough Percentage of residences that are Solid Masonry vs. Wood Frame			
Wood		COMMENTS: Nearly 100% are wood framed.	
7) How Common?			
	Façade Only	Whole House	COMMENTS:
kk) Brick			
ll) Block			
mm) Stone (veneer)			
nn) Stucco			
8) More Common 2x4 or 2x6 Rough Percentage %			
2 x 4		COMMENTS:	
9) Sheathing Type for wood-framed houses? (OSB, Insulation Board i.e. thermoply or energy brace)			
COMMENTS: Age of this house would promote use of plywood sheathing rather than OSB or Thermoply. Presume plank siding over building paper over sheathing attached to 2 x 4 framing.			
s) Existing	X	Composite Asphalt Shingles over sheathing	
t) New			
10) How thick is drywall?			
		COMMENTS: Assume ½-inch material	
j) Is plaster used in existing homes?		Not likely	
11) Your opinion on Sound Installation Treatments:			
COMMENTS:			
s) For Existing Construction: Additional layers of gypsum board?		Doubtful that residents would support the inconvenience of the installation, however, that question has not been brought forth directly to the homeowners.	
t) For New Construction: Resilient Channels, 2x6 Studs or Staggered Studs?		N/A	

12) Opinions on Ceiling Treatments:	COMMENTS:	
bb) For Existing Construction: Additional layers of gypsum board?		<i>Doubtful that residents would support the inconvenience of the installation, however, that question has not been brought forth directly to the homeowners.</i>
cc) For New Construction: Resilient Channels?		<i>N/A</i>
dd) "False": Vaulted ceilings (sloped ceiling with small attic space above)?		<i>N/A</i>
13) Are Storm Windows acceptable as a sound insulation modification?	<i>No Storm Windows</i>	COMMENTS: <i>Storm windows are not widely used here in BOI. Older homes have extruded metal-framed windows with single glazing, rather than wood. Newer homes are more likely to be insulated glazing within extruded vinyl frames.</i>
14) Are Skylights common in this area?	<i>No Skylights</i>	COMMENTS:
15) R-value requirements	Typical Value?	COMMENTS:
s) Windows		<i>Slider metal window, non insulated (R<1.0), Insulated Vinyl (R-20)</i>
t) Doors		<i>Solid wood in wood frame (R-2.5), Steel door in wood frame (R-6)</i>
16) What window styles are most common?	<i>Sliders</i>	COMMENTS: <i>See storm windows.</i>
17) Storm doors for swinging doors typical?	<i>No Storm Door</i>	COMMENTS: <i>Not typical</i>
18) Slider or French Doors Typical?		
j) Your opinion on secondary French doors (storm doors)?		COMMENTS: <i>Not typical</i>
19) We assume that all swinging doors swing inward. Is this usually true?	<i>Yes</i>	COMMENTS:
20) Type of Siding Rough Percentage %	COMMENTS:	
ccc) Vinyl		
ddd) Aluminum		
eee) Handiplank		
fff) Wood	<i>100%</i>	
ggg) EIFS		
hhh) Asbestos		
21) What is most common: Full basements, Crawl spaces or Slabs?	<i>Crawlspace</i>	COMMENTS:
22) Are vaulted ceilings common in existing or new construction?	<i>No</i>	COMMENTS:
23) Are there standards for Fresh air, Ventilation, and Circulation aside from Heat and Air Conditioning?	<i>Yes</i>	COMMENTS: <i>Only related to ventilation of attic or crawl spaces. Fixed louver venting of attic or crawlspace is 1 sf (net)/150 sf (attic or crawlspace area), mechanical venting is 0.2 cfm/sf.</i>
24) Is Central Air common in existing homes?	<i>No</i>	
j) Do existing homes use window or thru-wall air conditioners?	<i>Not visible</i>	COMMENTS:
25) Heat: Are forced hot air systems or radiators more common?	<i>Forced Air</i>	COMMENTS:

<p>26) Fireplaces common in this area?</p>	<p>Yes</p>	<p><i>2 fireplaces are reported in this house.</i></p>
<p>j) Would the addition of a sound-insulating cap on a chimney be okay</p>		<p>COMMENTS: <i>Location of fireplace uncertain in this house. Date of construction would presume a masonry chimney shared with the furnace flue for primary and metal flue pipe for secondary flue..</i></p>



Appendix E-11. Housing Survey Map

