



February Commission Report

Director's Update

Given by Rebecca Hupp, Airport Director
Boise Airport

FEBRUARY 1, 2023

Runway Closures

10R/28L

DECEMBER

- 12/4: 10-11am and 12:55-2:15pm, Snow Removal
- 12/7: 8-9am, Routine Maintenance
- 12/8: 8:30am-11am, Snow Removal
- 12/12: 4-5am and 5-6am, Snow Removal
- 12/14: 8-9am, Routine Maintenance
- 12/21: 8-9am, Routine Maintenance
- 12/23-12/26: Intermittent closures for snow removal and chemical application
- 12/28: 8:12am-9:10am, Routine Maintenance

JANUARY

- 1/4: 8-9am, Routine Maintenance
- 1/10: 9am-3pm, FAA Tech Ops
- 1/18: 8-9am, Routine Maintenance
- 1/19: 6:45-7:30am, 9-10am and 1-4pm, Intermittent closures for snow removal and chemical application
- 1/25: 8-9am, Routine Maintenance

*Short, intermittent closures for chemical applications not included in the list above

10L/28R

DECEMBER

- 12/4: 10:30-12pm, Snow Removal
- 12/6: 8-9am, Routine Maintenance
- 12/12: 5:45-10am, Snow Removal
- 12/13: 8:30-9:15am, Routine Maintenance
- 12/20: 8-9am, Routine Maintenance
- 12/23-12/26: Intermittent closures for snow removal and chemical application
- 12/27: 8-9am, Routine Maintenance

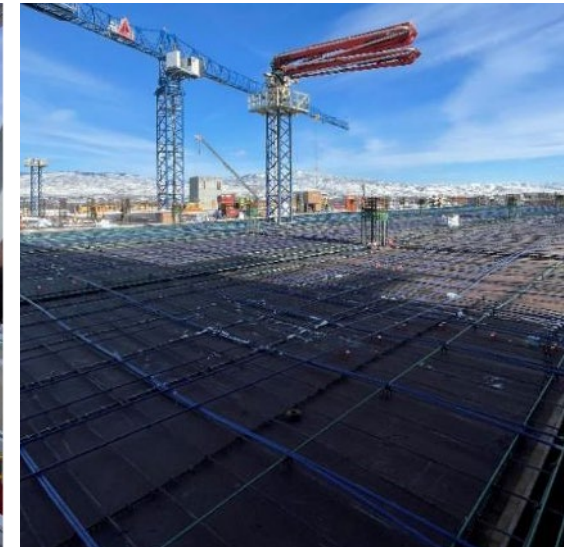
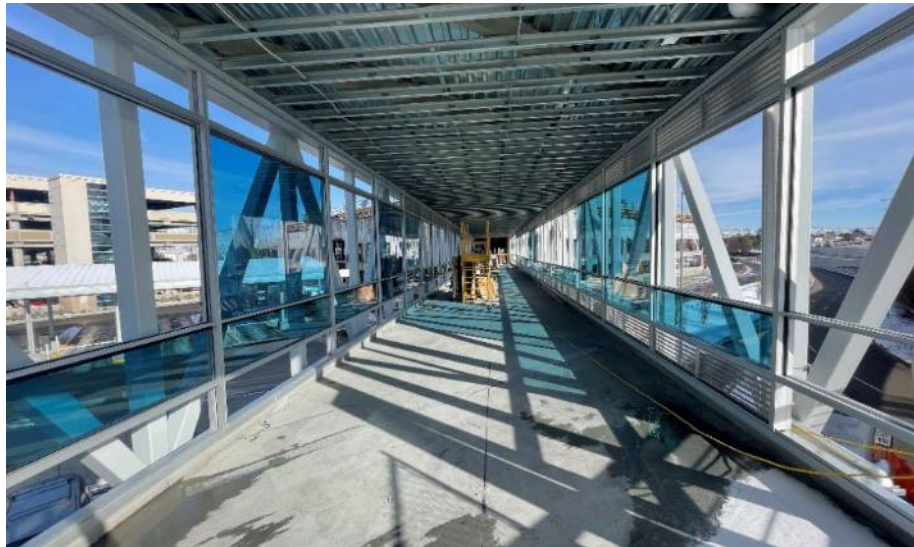
JANUARY

- 1/3: 8-9am, Routine Maintenance
- 1/11: 9am-3pm, FAA Tech Ops
- 1/16 @10pm - 1/17 @12:30pm: Aircraft Incident
- 1/19: 7am-2pm and 2:50-5pm, Intermittent closures for snow removal and chemical application
- 1/21: 8am-12pm, Airfield Maintenance
- 1/24: 8-9am, Routine Maintenance
- 1/31: 8-9am, Routine Maintenance

Public Parking Garage Construction

East Public Garage

- Formwork for level 4 slab in Area B in progress
- Installation of formwork for vehicle ramp in progress
- Stair installation is in progress
- Glass is being installed in the pedestrian bridge



Employee Parking Garage Construction



- Formwork is being installed for the level 2 concrete slab in the Stair/Elevator tower and area 1
- Veneer was being installed on the exterior face of the CIP wall
- Slab on grade for Area 2 has been poured

Checkpoint Expansion



- Temporary walls around the checkpoint have been removed
- New secure access doors are installed and operational
- LEO and TSA have moved into their new offices

Holiday Travel

- Weather across the nation and its subsequent impacts to airline operations affected holiday travel
- Southwest cancelled most of their flights from 12/26/22 – 12/30/22 across their network
- Airport operations went smoothly at BOI, with our team working hard to clear snow and keep our runways open and operational
- Traditional airport parking options met passenger demand
- BOI passengers enjoyed many local choirs, orchestras and the GoTeam therapy dogs over the holiday season



FAA Outage

- On January 11th, the FAA issued a nationwide ground stop on all domestic flight departures following an overnight outage to their Notice to Air Missions (NOTAM) system that provides safety information to flight crews
- Flights resumed at 7am MT at BOI
- This pause caused a ripple effect on flights throughout the day, resulting in 29 total delays on flights arriving and departing

Aircraft Incident

- After landing safely on the evening of January 16th, American Airlines flight # 2990 was taxiing towards the terminal when the Boeing 737's front wheel exited the pavement into the airfield safety area
- Passengers deplaned via air stairs and were shuttled to the terminal
- No injuries were reported. There was no impact to airport operations
- Our thanks and appreciation goes out to the Air National Guard for their prompt response and willingness to help transport passengers!



BOI Listed as 2nd Most Punctual Airport

- OAG Aviation listed BOI as the second most punctual North American Airport in their annual Punctuality League Report
- Based on a full year of flight data from 2022
- On-time performance (OTP) defined as flights that arrive or depart within 15 minutes of their scheduled times

Rank	Coverage	Airport Name	Code	OTP 2022	Cancellation Rate % 2022
1	99.9%	Salt Lake City	SLC	83.59%	1.08%
2	99.5%	Boise	BOI	82.92%	1.17%
3	96.1%	Fresno Yosemite International Airport	FAT	81.58%	1.58%
4	99.2%	Spokane International Apt	GEG	81.29%	1.52%
5	99.7%	Tucson International Apt	TUS	81.26%	1.78%
6	95.1%	Lihue	LIH	80.95%	0.86%
7	100.0%	Detroit Metropolitan Wayne County	DTW	80.94%	2.13%
8	97.9%	Portland (US) OR	PDX	80.85%	1.95%
9	98.4%	Greenville/Spartanburg Intl Apt	GSP	80.37%	2.75%
10	99.1%	Minneapolis/St Paul International Apt	MSP	80.36%	1.61%

Non-Aeronautical Property Development



- Adler Industrial was selected by the airport to develop non-aeronautical property that is now zoned light industrial
- Black Market Gelato, a future tenant building a production facility in Area One, held their groundbreaking ceremony in early January

Real ID Deadline Extended



She's cleared for takeoff because she got a Star Card - Idaho's REAL ID.



The Department of Homeland Security announced that the new REAL ID deadline has been extended until **May 7, 2025** to get your Idaho Star Card

Delta Blood Drive



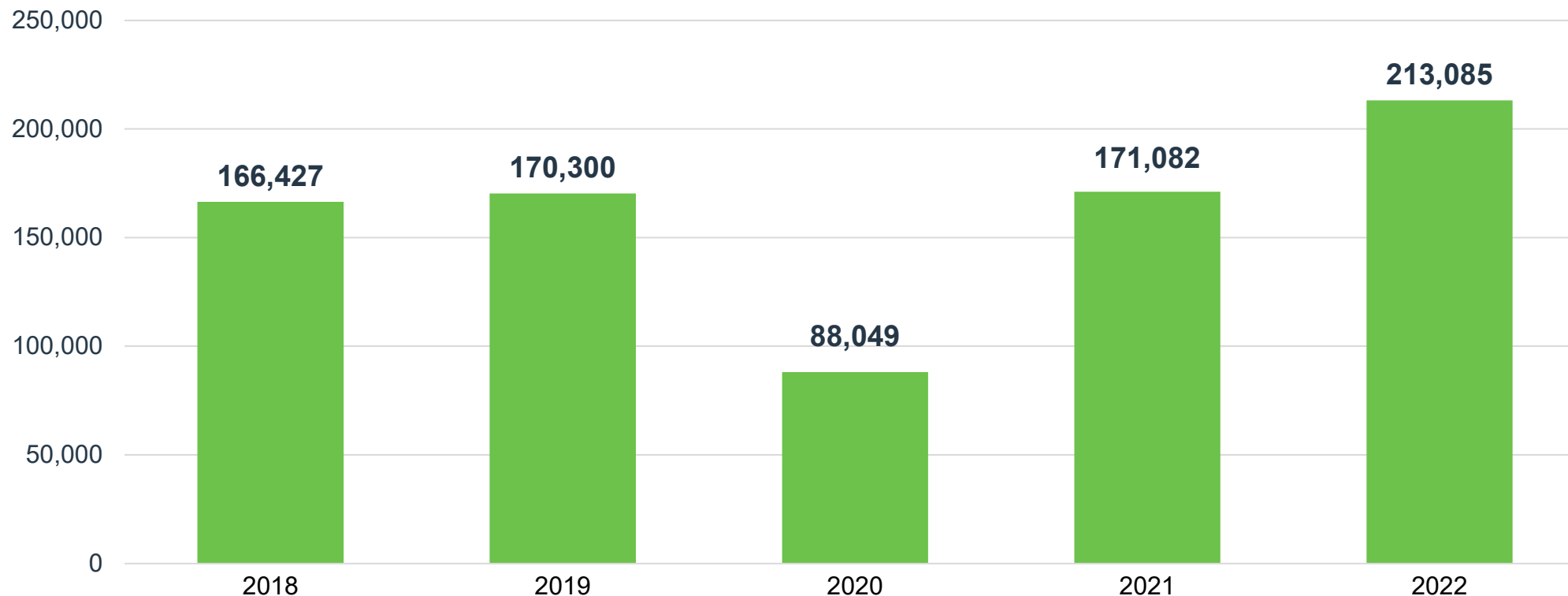
- Delta Air Lines partnered with the American Red Cross on another successful blood drive in January
- Thank you to Delta for organizing and thank you to everyone who took time out of their day to donate and help save lives

BOI Holiday Party 2022



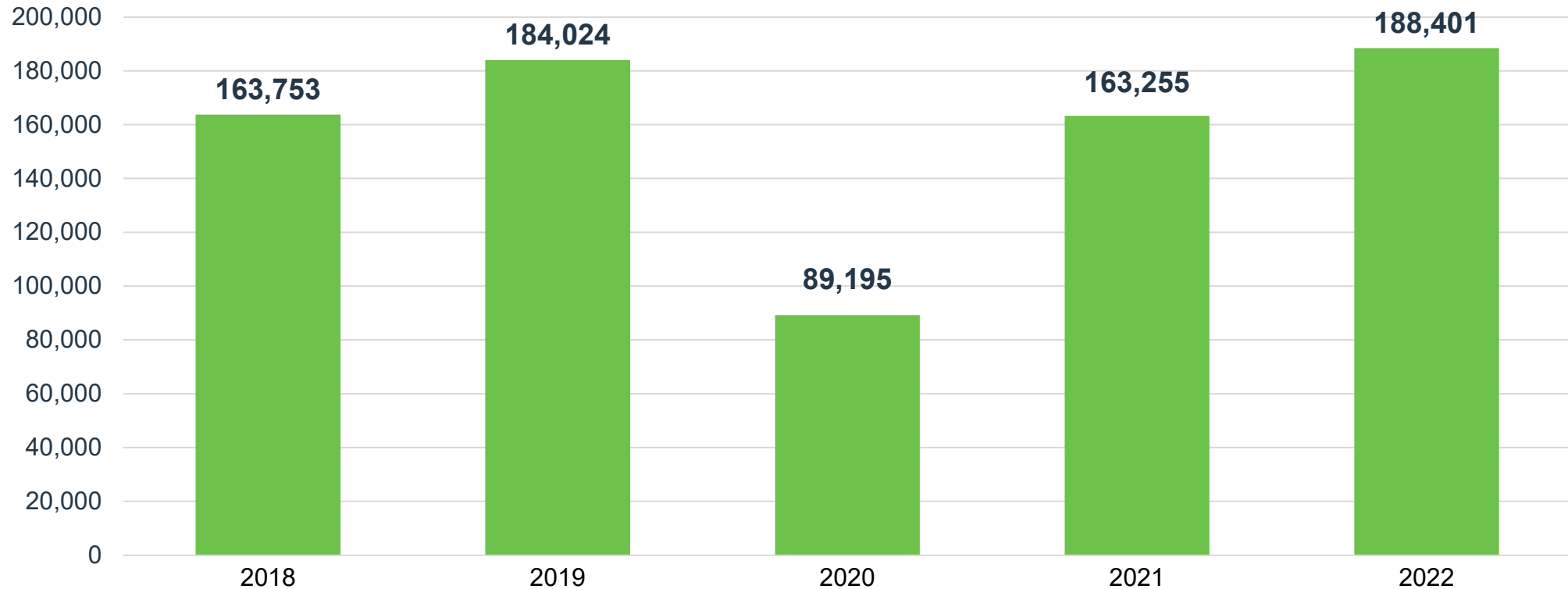
November Enplanements

Up 25% from November 2019



December Enplanements

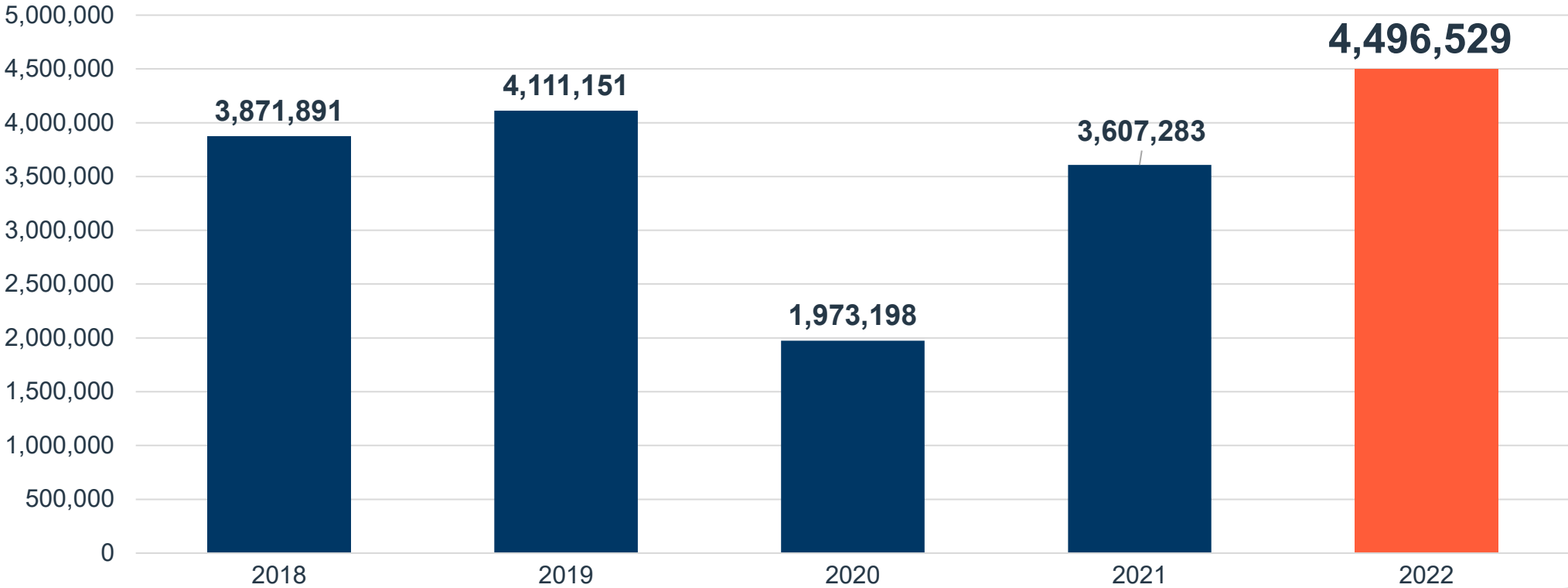
Up 15% from December 2021 | Up 2% from December 2019



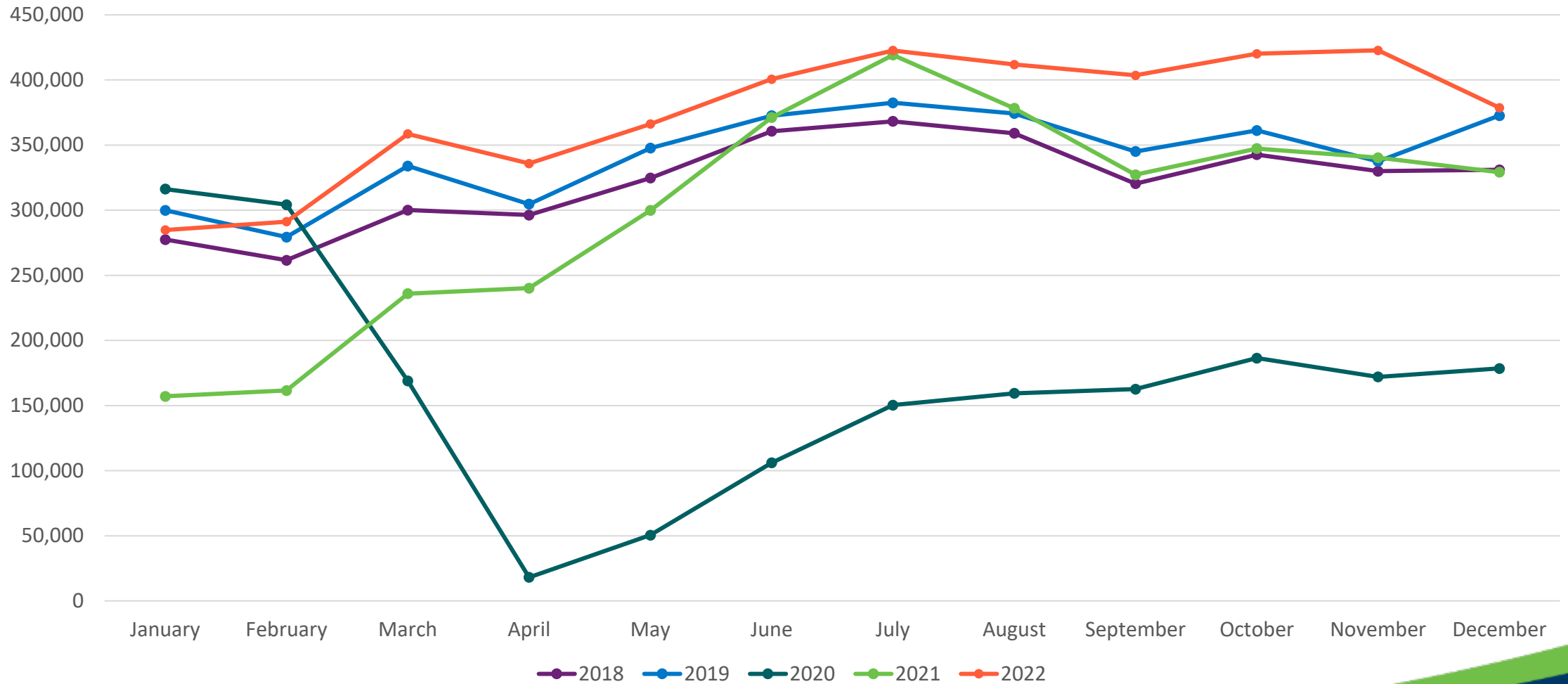
A Record Year for Passenger Travel

2022 was the busiest year on record at BOI, up 9% above 2019—our previous record

Total Passengers



Historic Monthly Passengers



Top 10 Operating Revenue Description	FY 2023	FY 2022	\$ Change	% Change
Parking Lot	\$ 4,167,945	\$ 3,600,999	\$ 566,946	16%
Rental Car Concession	\$ 1,619,786	\$ 1,519,014	\$ 100,772	7%
Industrial Land Rent	\$ 1,025,000	\$ 1,008,565	\$ 16,435	2%
Signatory Airline Landing Fees	\$ 1,024,739	\$ 525,546	\$ 499,193	95%
Terminal Rent - Airlines	\$ 924,637	\$ 925,849	\$ (1,212)	0%
Terminal Concessions – Food/Beverage	\$ 451,709	\$ 290,312	\$ 161,397	56%
Terminal Concessions – Retail	\$ 396,001	\$ 388,868	\$ 7,133	2%
Landings/Freight	\$ 199,297	\$ 224,013	\$ (24,716)	-11%
Advertising	\$ 181,089	\$ 177,160	\$ 3,929	2%
Terminal Rent – Non-Airlines	\$ 166,768	\$ 166,669	\$ 99	0%
Total Top 10 Operating Revenue	\$ 10,156,972	\$ 8,826,995	\$ 1,329,977	--
Other Operating Revenue	\$ 967,382	\$ 907,861	\$ 59,521	7%
Total Operating Revenue	\$ 11,124,354	\$ 9,734,856	\$ 1,389,498	14%

Top 10 Operating Expenses Description	FY 2023	FY 2022	\$ Change	% Change
Personnel	\$ 3,085,909	\$ 2,521,425	\$ 564,484	22%
Indirect Cost Reimbursement	\$ 1,141,791	\$ 947,997	\$ 193,794	20%
Policing Service	\$ 827,054	\$ 827,054	\$ 0	0%
Fire Service	\$ 783,009	\$ 783,009	\$ 0	0%
Parking Management	\$ 533,373	\$ 402,122	\$ 131,251	33%
Power	\$ 239,799	\$ 197,576	\$ 42,223	21%
Chemicals	\$ 228,476	\$ 13,656	\$ 214,820	1573%
R/M – Structural/Electrical/Plumbing	\$ 211,062	\$ 105,490	\$ 105,572	100%
Financial Services	\$ 144,357	\$ -	\$ 144,357	N/M%
Minor Equipment	\$ 144,281	\$ 35,526	\$ 108,755	306%
Total Top 10 Operating Expenses	\$ 7,339,112	\$ 5,833,855	--	--
Other Operating Expense	\$ 1,424,578	\$ 1,182,312	\$ 242,267	20%
Total Operating Expense	\$ 8,763,690	\$ 7,016,167	\$ 1,747,523	25%

The logo consists of three curved, overlapping shapes: a light green one at the bottom, a medium blue one in the middle, and a darker blue one at the top, all pointing towards the right.

Boise Airport

www.iflyboise.com