



# June Commission Report

## *Director's Update*

Given by Rebecca Hupp, Airport Director  
Boise Airport

JUNE 7, 2023

# May Runway Closures

## 10R/28L

- Routine Maintenance was performed on: 5/3, 5/7, 5/10, 5/14, 5/16, 5/23

## 10L/28R

- Routine Maintenance was performed on: 5/2, 5/9, 5/17, 5/21, 5/24, 5/28, 5/30
- 5/27, 9:50am – 10:37am: GA aircraft bounced on landing and sheered off nose gear. No injuries, no spills, and no significant damage to the runway. Swept and reopened.

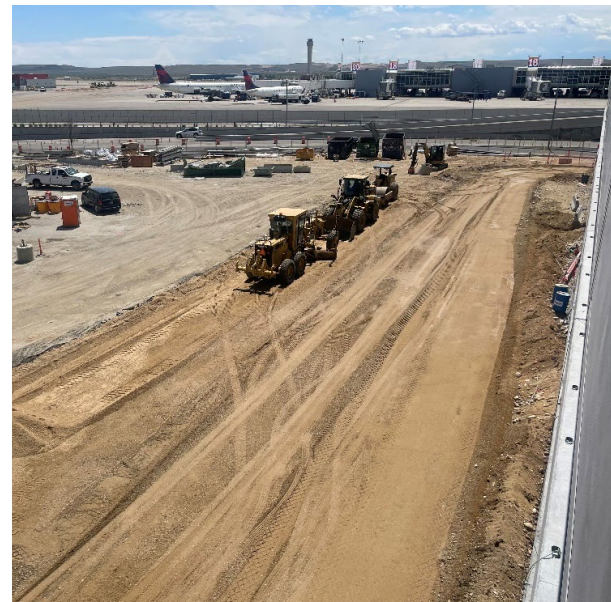




# Public Parking Garage Construction

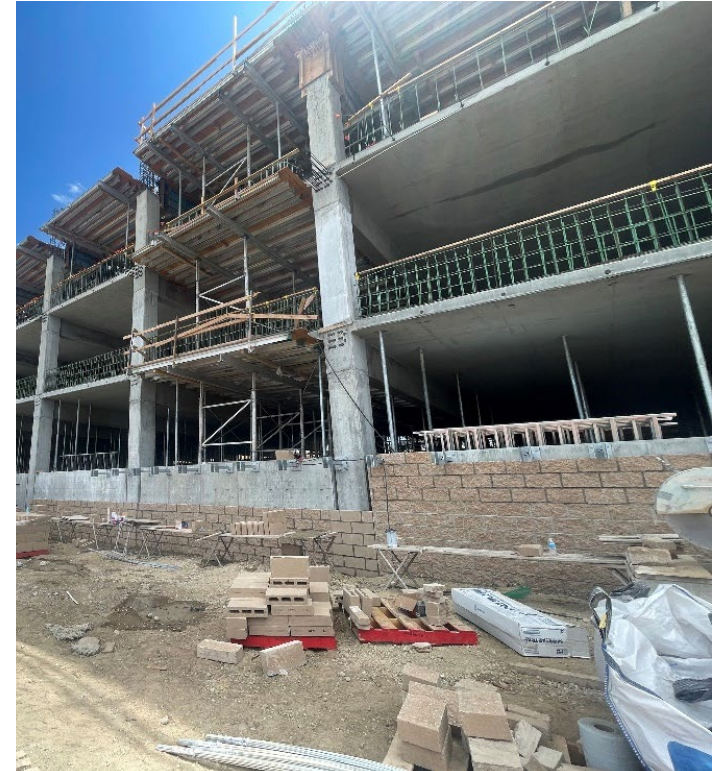
## East Public Garage

- Exterior painting is in process
- Structure's interior ceilings have been painted white to help reflect light and make the garage brighter to promote safety and suspended signage is being installed
- Construction on the ramp and garage entrance continue





# Employee Parking Garage Construction

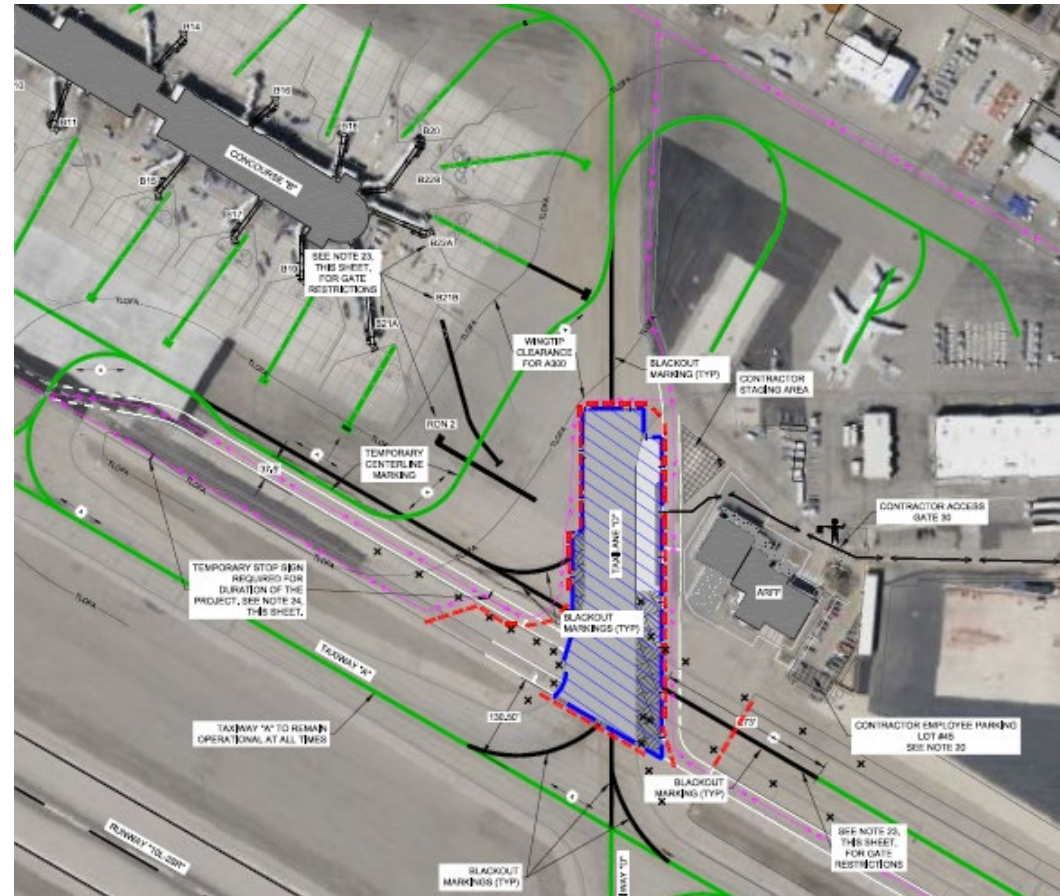


- Level 4 of the elevator/stair tower in progress
- Formwork for Level 4 started
- Veneer was being installed on the walls of the north elevation



# Taxilane D Pavement Rehabilitation

- Construction started May 15<sup>th</sup>
- Paving approximately 500' of the Taxilane from north of Taxiway A into the ramp
- Project is anticipated to be completed by June 8





# Non-Aeronautical Development Progress



- Construction on Black Market Gelato's facility is steadily progressing
- On-track to open this August



# Memorial Day Travel Update

- Memorial Day weekend starts our official kickoff for summer travel
- Traditional parking options met passenger demands
- The TSA held a media event updating the public on new technology, new PreCheck features, etc.
- Received earned media coverage on all local broadcast and print publications



# Congrats!



- Brett Korporeal and Jen Moore earned their Airport Certified Employee (ACE) for Planning & Environmental in May
- They were amongst the first in the nation to achieve this designation



# JumpStart Air Service Conference

- Director Hupp will be attending the 2023 JumpStart Air Service Conference in Milwaukee, WI from June 12-14
- Scheduled to meet with a mix of current and prospective airlines

## Airline attendees:





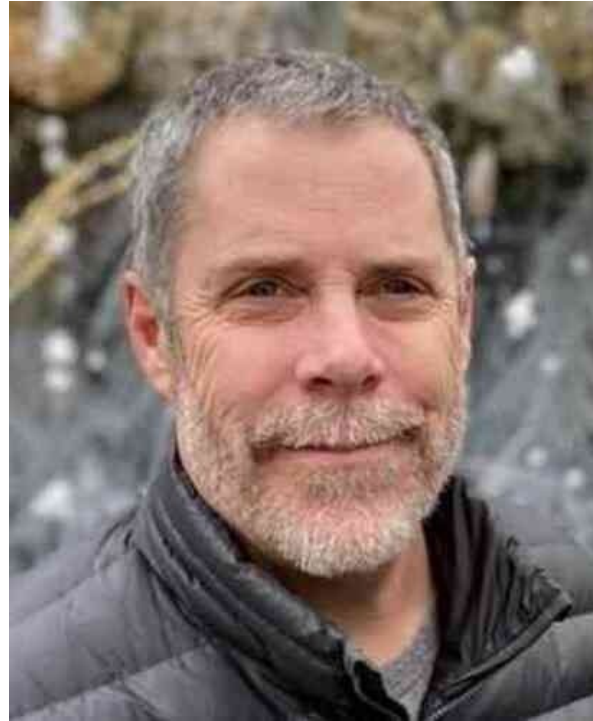
# Gowen Thunder

- Gowen Thunder will impact airport operations August 25th (rehearsal day) and August 26th and 27th (show days)
- Temporary Flight Restrictions (TFRs) will be in effect for both rehearsal and show days during designated blocks of time
- Two half-hour intermissions are scheduled each show day for commercial operations
- On the landside, anticipating increased traffic around the airport and restrictions/closures of west, south and east bordering streets





# Remembering Jim Moore

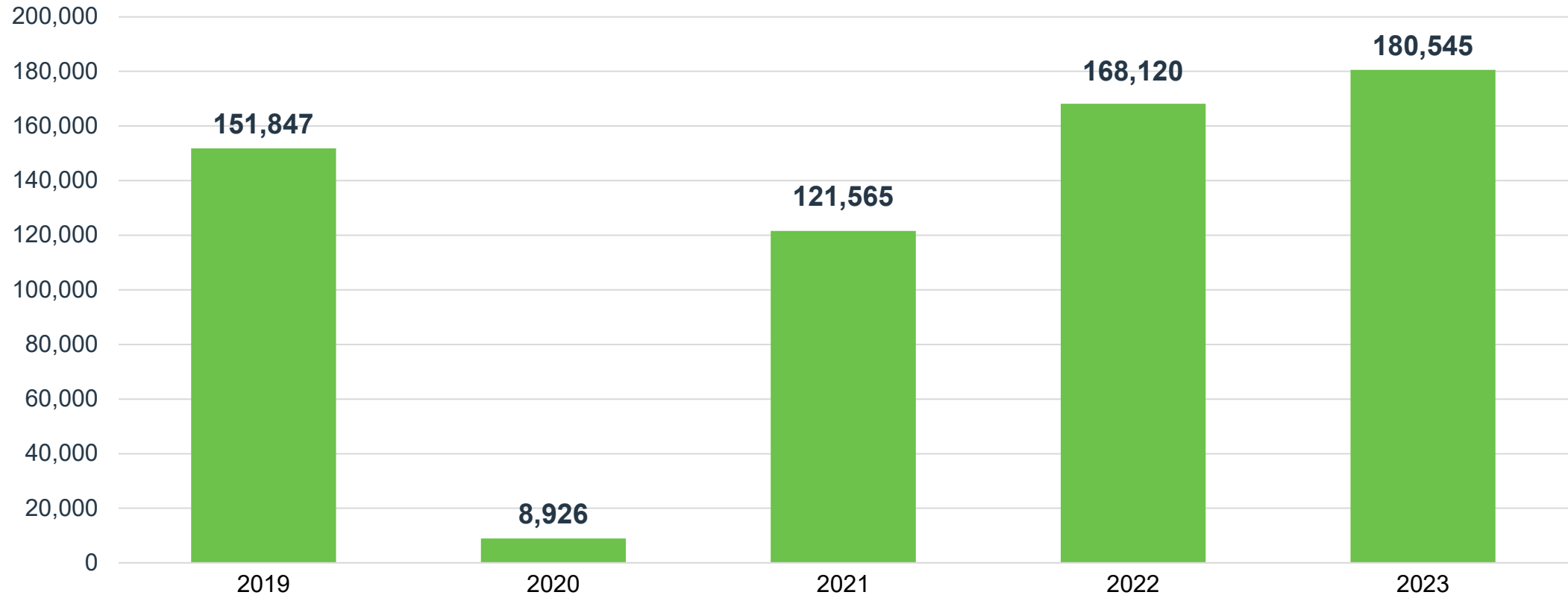


- Jim Moore, Station Manager for Delta, recently passed away after a battle with cancer. He spent 27 years with Delta and 14 years leading the BOI station
- Jim was a dedicated member of the Boise Chamber of Commerce's travel industry board. They've renamed their annual Travel and Hospitality award in his honor



# April Enplanements

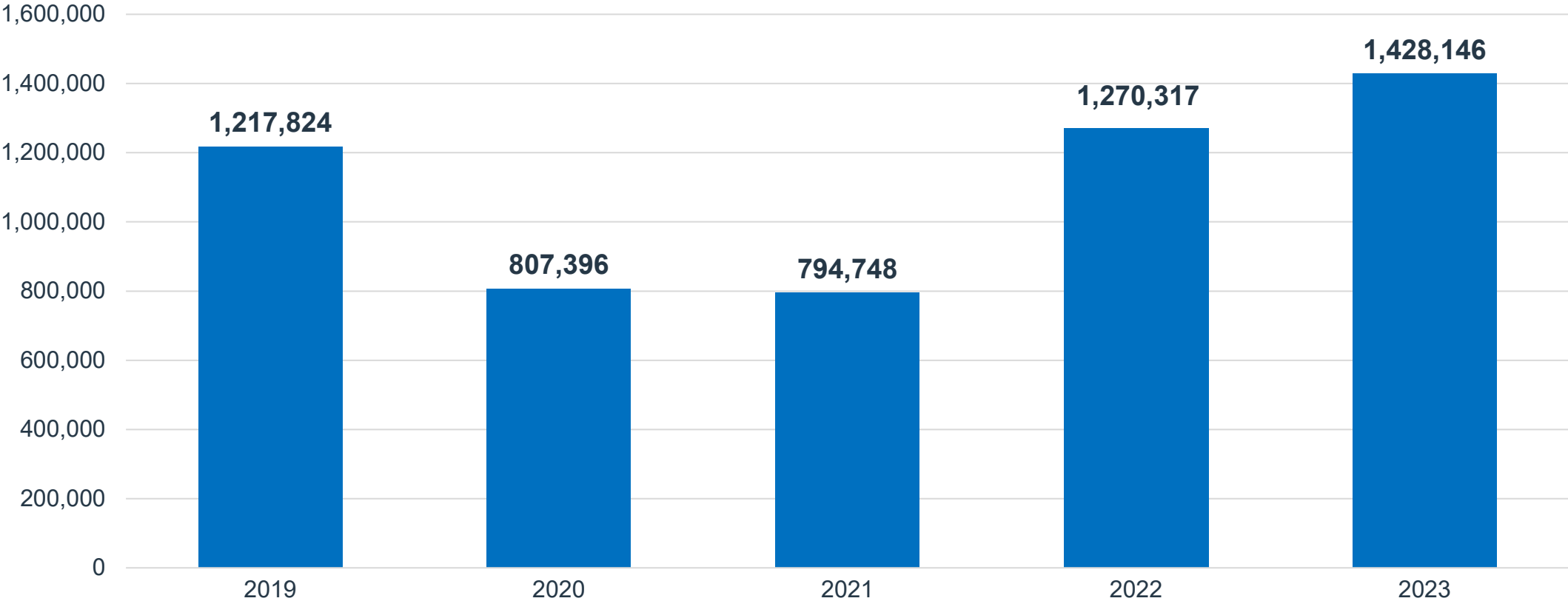
*Up 7% from April 2022*



# 2023 Total Passengers (through April)

*Up 12% over 2022*

Total Passengers



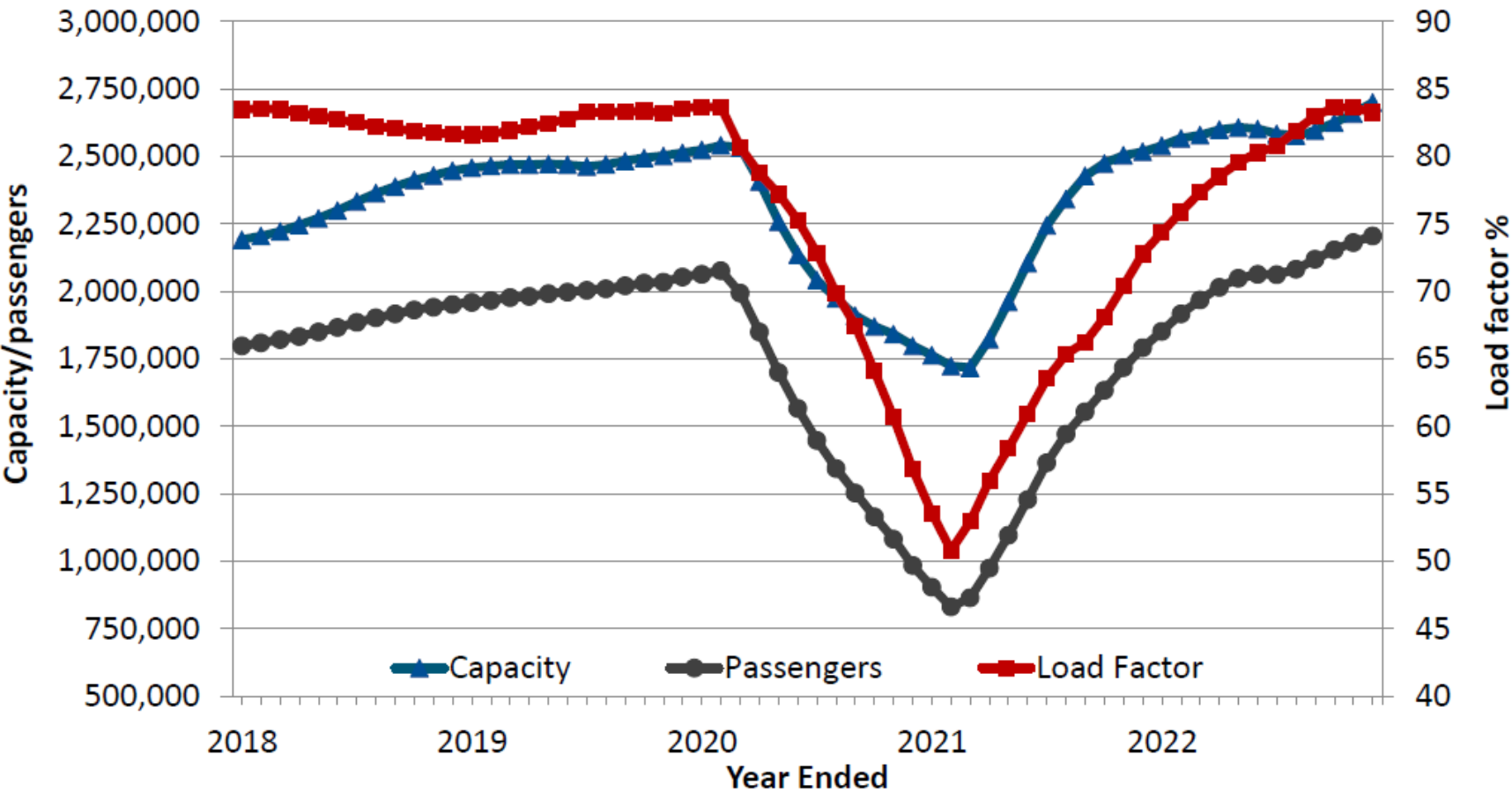


Top 10 Operating Revenue Description	FY 2023	FY 2022	\$ Change	% Change
Parking Lot	\$ 9,523,054	\$ 8,265,500	\$ 1,257,554	15%
Rental Car Concession	\$ 3,636,590	\$ 3,147,099	\$ 489,491	16%
Industrial Land Rent	\$ 2,450,322	\$ 2,290,443	\$ 159,878	7%
Signatory Airline Landing Fees	\$ 2,304,592	\$ 1,477,716	\$ 826,876	56%
Terminal Rent - Airlines	\$ 2,272,539	\$ 2,132,808	\$ 139,731	7%
Terminal Concessions – Food/Beverage	\$ 1,063,758	\$ 598,682	\$ 465,076	78%
Terminal Concessions – Retail	\$ 756,016	\$ 685,997	\$ 70,019	10%
Landings/Freight	\$ 576,186	\$ 540,805	\$ 35,380)	7%
Terminal Rent – Non-Airlines	\$ 425,314	\$ 367,500	\$ 57,814	16%
Advertising	\$ 411,899	\$ 337,464	\$ 74,435	22%
<b>Total Top 10 Operating Revenue</b>	<b>\$ 23,420,270</b>	<b>\$ 19,844,014</b>	<b>\$ 3,576,256</b>	<b>--</b>
Other Operating Revenue	\$ 2,630,874	\$ 1,982,039	\$ 648,835	33%
<b>Total Operating Revenue</b>	<b>\$ 26,051,144</b>	<b>\$ 21,826,053</b>	<b>\$ 4,225,091</b>	<b>19%</b>

<b>Top 10 Operating Expenses Description</b>	<b>FY 2023</b>	<b>FY 2022</b>	<b>\$ Change</b>	<b>% Change</b>
Personnel	\$ 7,262,272	\$ 6,120,449	\$ 1,141,824	19%
Indirect Cost Reimbursement	\$ 2,549,008	\$ 2,203,459	\$ 345,549	16%
Parking Management	\$ 2,496,952	\$ 1,035,066	\$ 1,461,886	141%
Policing Service	\$ 1,929,794	\$ 1,929,794	\$ 0	0%
Fire Service	\$ 1,827,022	\$ 1,827,022	\$ 0	0%
Chemicals	\$ 788,379	\$ 451,875	\$ 336,504	74%
R/M – Structural/Electrical/Plumbing	\$ 731,345	\$ 275,202	\$ 456,142	166%
Power	\$ 564,033	\$ 401,210	\$ 162,823	41%
Minor Equipment	\$ 287,209	\$ 111,020	\$ 176,189	159%
R/M – Fleet Management	\$ 271,852	\$ 295,935	(\$ 24,083)	-8%
<b>Total Top 10 Operating Expenses</b>	<b>\$ 18,707,865</b>	<b>\$ 14,651,030</b>	<b>--</b>	<b>--</b>
Other Operating Expense	\$ 3,315,786	\$ 2,644,243	\$ 671,543	25%
<b>Total Operating Expense</b>	<b>\$ 22,023,651</b>	<b>\$ 17,295,273</b>	<b>\$ 4,728,378</b>	<b>27%</b>



# Boise Traffic/Capacity Trends



YE December 2022 capacity was up 7% while passengers were up 23%, **leading to a 10% point increase in the average load factor (83%).**

# Top Origination/Destination Markets

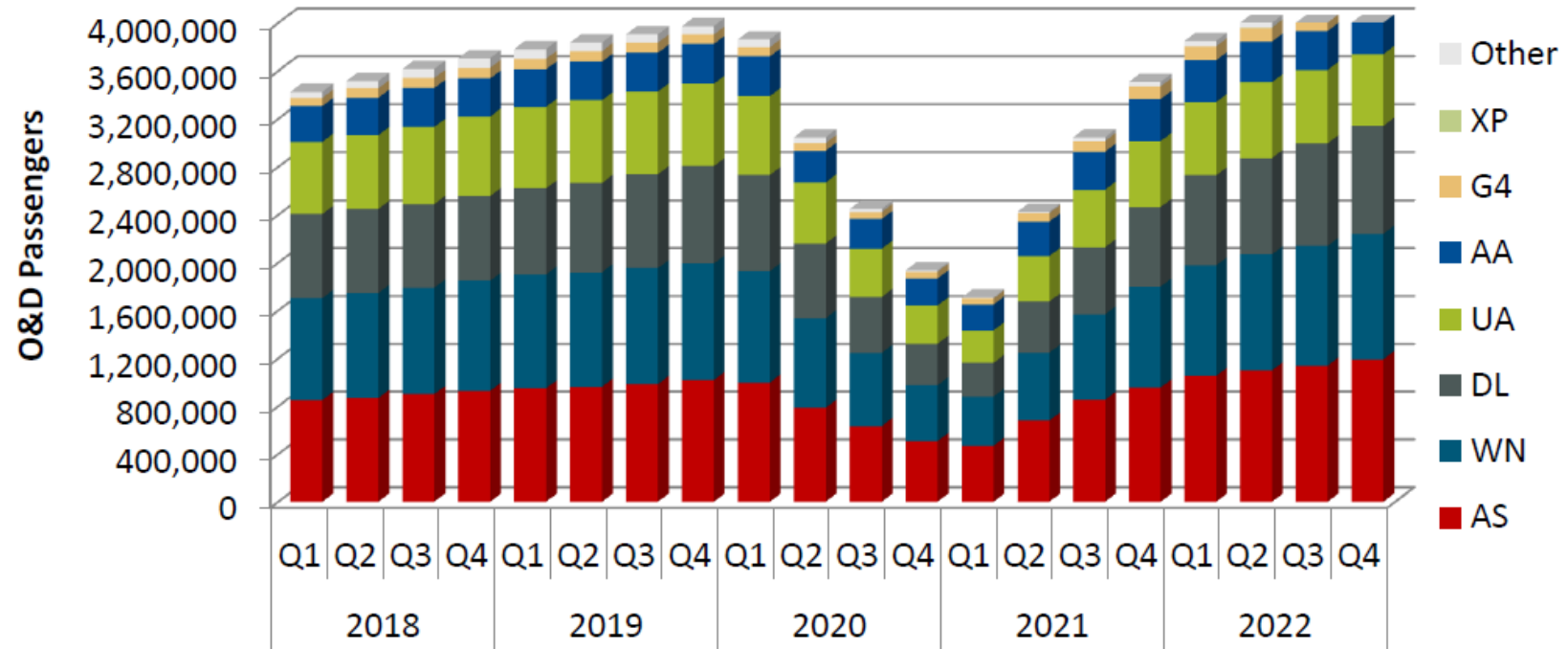
Rank	Destination	O&D Pax	O&D Revenue	Average Fare (\$)	Yield (¢)	% Change Since Q4 2021			
						Pax	Rev	Fare	Yield
1	Seattle, WA	97,491	11,874,241	122	31	10	37	24	24
2	Phoenix, AZ (PHX)	65,755	8,118,603	123	17	19	25	5	5
3	Las Vegas, NV	63,387	6,705,374	106	20	36	29	(6)	(6)
4	San Diego, CA	49,082	6,071,477	124	17	36	30	(4)	(4)
5	Los Angeles, CA	48,596	7,395,472	152	23	(15)	2	21	21
6	Denver, CO	40,304	6,369,092	158	24	3	28	24	24
7	Portland, OR	40,294	6,603,984	164	48	29	43	11	11
8	Sacramento, CA	39,536	4,671,311	118	27	30	36	5	5
9	Orange County, CA	31,803	4,085,775	128	19	14	45	27	27
10	San Francisco, CA	28,309	4,278,623	151	29	11	42	28	28
11	Oakland, CA	26,565	2,764,026	104	20	13	22	7	7
12	Burbank, CA	26,045	2,325,283	89	14	218	157	(19)	(19)
13	San Jose, CA	25,927	3,197,289	123	24	37	56	14	14
14	Spokane, WA	23,775	3,773,757	159	55	12	43	28	28
15	Salt Lake City, UT	20,722	4,076,130	197	68	22	32	8	8
16	Chicago, IL (ORD)	19,236	4,619,076	240	17	17	50	29	29
17	Dallas, TX (DFW)	18,442	5,087,840	276	22	7	40	31	31
18	Atlanta, GA	15,075	4,323,301	287	16	38	72	24	24
19	Minneapolis, MN	14,590	3,162,331	217	19	25	28	2	2
20	Orlando, FL (MCO)	13,838	4,130,569	299	14	(6)	29	37	37
Total/Average		1,147,680	233,598,016	204	18	16	42	23	18

18 of the top 20 markets had increased passengers compared to Q4 2021, with Burbank increasing by the highest percentage.



# Boise Airline Market Share

*WN and NK increased share, while UA and G4 decreased shares.*



Year	Quarter	Airline Market Share								
		AS	WN	DL	UA	AA	G4	NK	XP	Other
2021	Q1	27%	24%	17%	16%	13%	3%	0%	0%	0%
	Q4	28%	23%	18%	16%	12%	3%	0%	0%	0%
	Q4	28%	24%	18%	16%	10%	3%	0%	0%	1%
	Q4	27%	24%	19%	16%	10%	3%	0%	0%	1%
2022	Q1	27%	24%	20%	16%	9%	3%	0%	0%	1%
	Q2	27%	24%	20%	16%	9%	3%	0%	0%	1%
	Q3	28%	24%	21%	15%	8%	3%	0%	0%	1%
	Q4	28%	25%	21%	14%	8%	2%	1%	0%	1%

# Boise Forward Looking Schedule

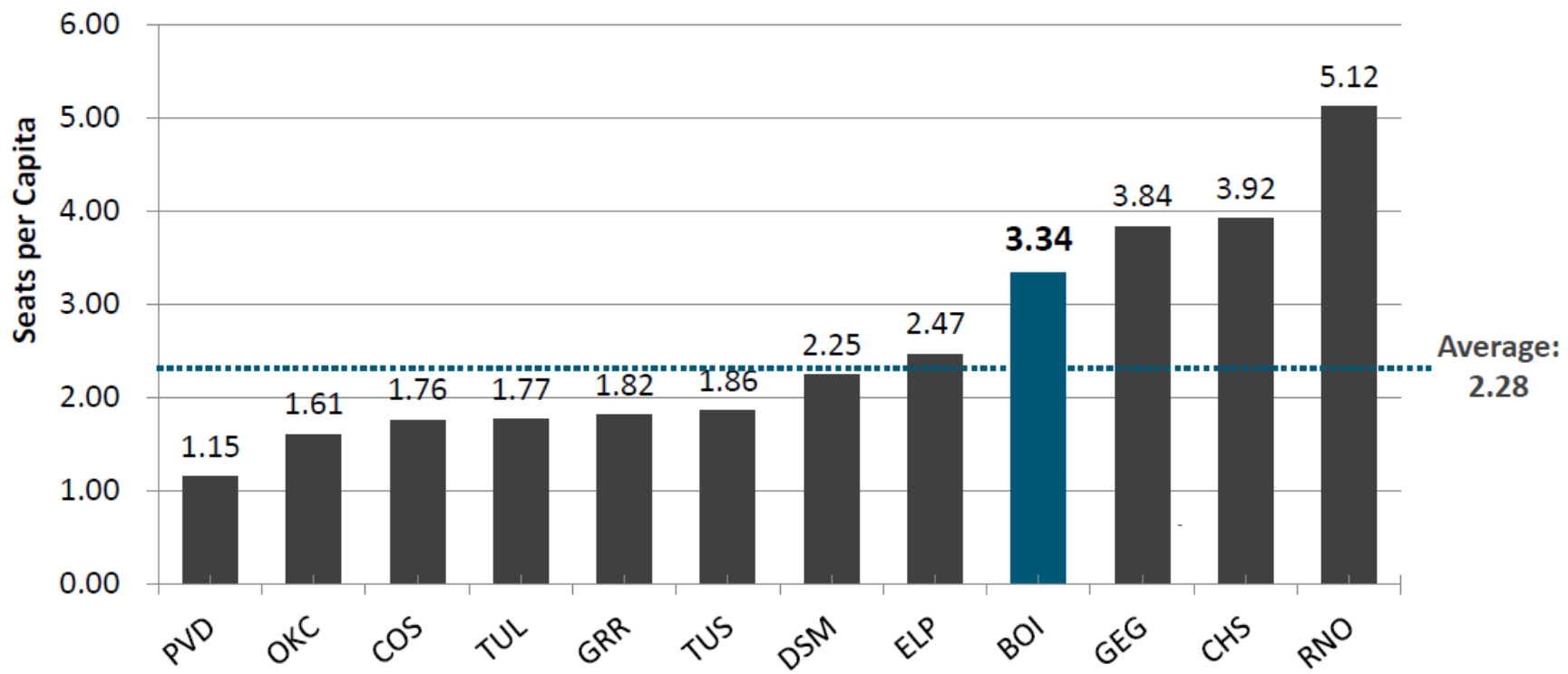
*Over the next 6 months, BOl’s flights are scheduled to be down 7%, while seats are scheduled to remain flat compared to the same months in the prior year*

Airline	Destination	Year-Over-Year Change %											
		May 2023		Jun 2023		Jul 2023		Aug 2023		Sep 2023		Oct 2023	
		Flts	Seats	Flts	Seats	Flts	Seats	Flts	Seats	Flts	Seats	Flts	Seats
Total		2%	9%	(8%)	1%	(11%)	(3%)	(10%)	(3%)	(11%)	(5%)	0%	2%

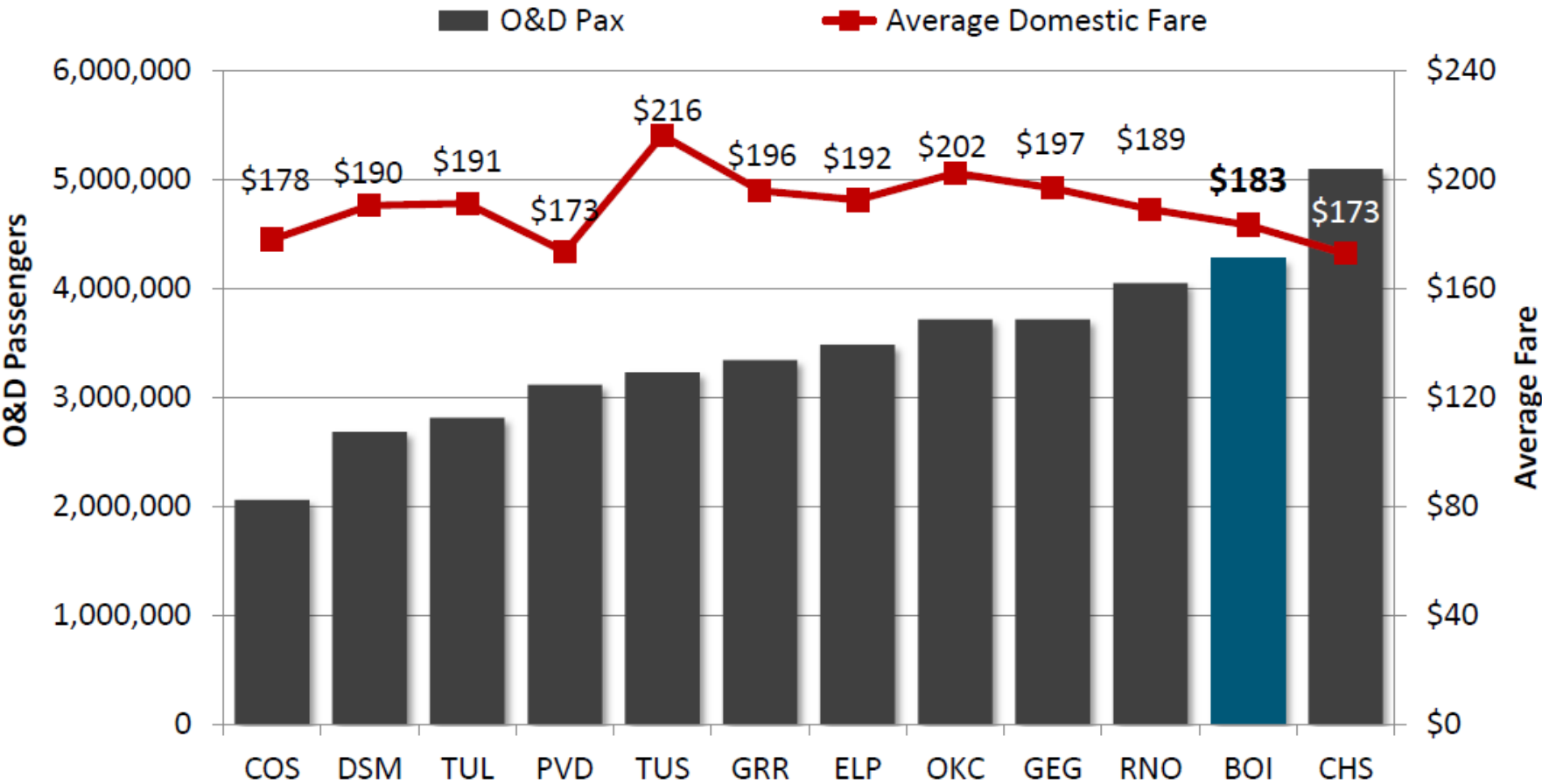


# Seats Per Capita Comparison

BOI exceeds all comparison markets except Spokane (GEG), Charleston (CHS) and Reno (RNO) in seats per capita and increased from 3.22 to 3.34 from YE Q3 2022 to YE Q4 2022.



# Origination/Destination Passenger and Airfare Comparison



***BOI ranked 2nd in terms of O&D passengers and had the 4<sup>th</sup> lowest average domestic fare.***



# Year-Over-Year Comparisons

Airport	2022 MSA Population	YE Q4 2022			YOY Change		
		# of Nonstop Destinations	O&D Pax	Seats	# of Nonstop Destinations	O&D Pax	Seats
Reno, NV	503,959	33	4,051,186	5,162,813	(1)	15%	5%
Spokane, WA	598,354	21	3,713,757	4,589,739	0	20%	4%
Des Moines, IA	725,916	32	2,681,686	3,260,103	2	29%	20%
Colorado Springs, CO	771,880	14	2,059,172	2,714,546	2	14%	5%
<b>Boise, ID</b>	<b>807,701</b>	<b>26</b>	<b>4,274,354</b>	<b>5,399,406</b>	<b>(2)</b>	<b>22%</b>	<b>7%</b>
Charleston, SC	824,403	49	5,095,989	6,457,398	4	29%	18%
El Paso, TX	879,754	15	3,481,520	4,342,456	(3)	29%	31%
Tulsa, OK	1,030,642	25	2,811,083	3,644,406	4	26%	22%
Tucson, AZ	1,061,835	18	3,227,475	3,942,429	(2)	26%	17%
Grand Rapids, MI	1,098,604	35	3,340,549	3,990,904	1	18%	6%
Oklahoma City, OK	1,454,965	25	3,713,523	4,672,134	(1)	18%	13%
Providence, RI	1,679,169	29	3,113,815	3,865,580	5	35%	40%

While growth has been significant, BOI’s seat and passenger increase were in the middle of the range of the comparison markets.



# Boise Airport

[www.iflyboise.com](http://www.iflyboise.com)