



February Commission Report

Director's Update

Given by Rebecca Hupp, Airport Director

FEBRUARY 4, 2025

Over 5 MILLION Passengers!



BOI set (another) record in 2025!

- 5,229,399 passengers in 2025 compared to 4,990,885 in 2024, nearly 5% growth
- BOI has set records for passenger travel the last four consecutive years
- 76% growth in total passenger traffic over the last decade (2015-2025)

Runway Closures



January 28

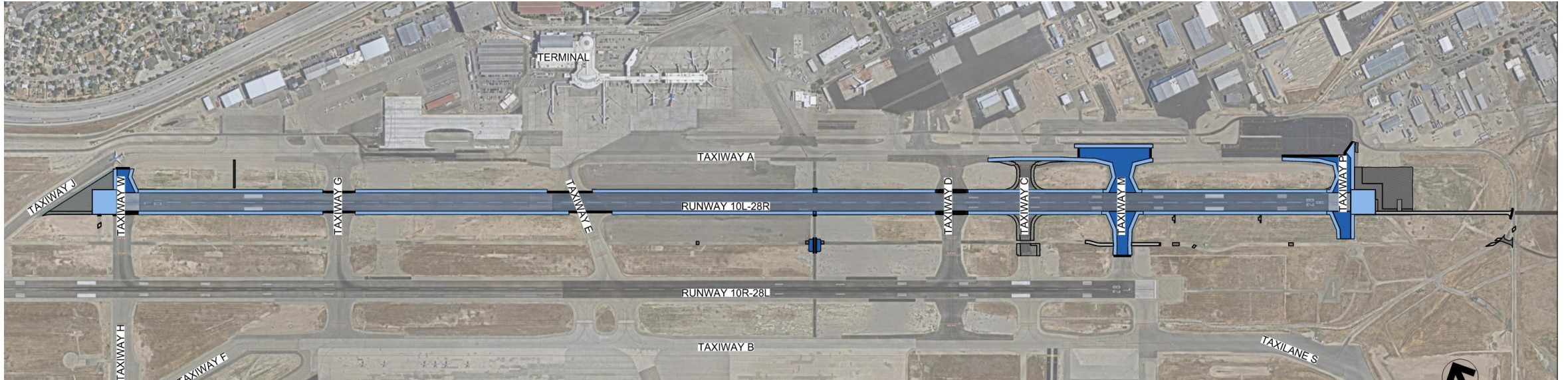
- RWY 10R/28L closed for approx. 1 hour for snow removal
- RWY 10L/28R closed for approx. 1 hour for snow removal

FAA Telecommunications Outage for BOI

- BOI ATCT/TRACON is experiencing an off-site telecommunications problem impacting services available to visual flight rules (VFR) general aviation operators, issue started on January 28th
- BOI ATC is currently limited in being able to provide additional services such as practice approaches, pattern work, flight following, and services outside of BOI airspace
- Issue does not impact normal air carrier operations
- No estimated time of repair at this time



Runway 10L-28R Reconstruction



- Project will reconstruct the runway, along with Taxiways Mike, Papa and decommissioned Taxiway Charlie.
 - March-Nov. 2026: 10L-28R closed
 - Nov. 2026-March 2027: Fully operational (construction shut down for winter)
 - March-Nov. 2027: 10L-28R closed; west side open for back taxi

Consolidated Rent-A-Car Center (ConRAC)



- Punchlist work has started.
- Inside the Customer Service Building:
 - HVAC start-up has begun
 - All finishes are in
- Terrazzo installation in the terminal connector has begun.
- Concrete for the plaza and sidewalks is being prepped.
- Rental car tenant improvements begin in March.

Concessions Update



NOW OPEN!

- Form & Function
- Bardenay
- Starbucks

Under Construction (last one!)

- Wendys: Estimated completion in mid-February

Airport Commission is invited to tour the new concessions locations immediately following this meeting.

Concourse Development and Terminal Improvements Program Update

Construction Manager/General Contractor

- Issued NTP-2: Jan '26-Mar '27
- Updated cost estimate expected 2/13

Architect/Engineering

- Reviewed 100% Schematic Design Package
- Project divided into East and West
 - East: Baggage Handling System and Terminal Improvements
 - West: Concourse and Central Utility Plant

Next Steps

- Focused on enabling work for BHS and Terminal Improvements
- Construction planned to begin Fall 2026



Boise Airport FENTRESS STUDIOS
A Fentress Company

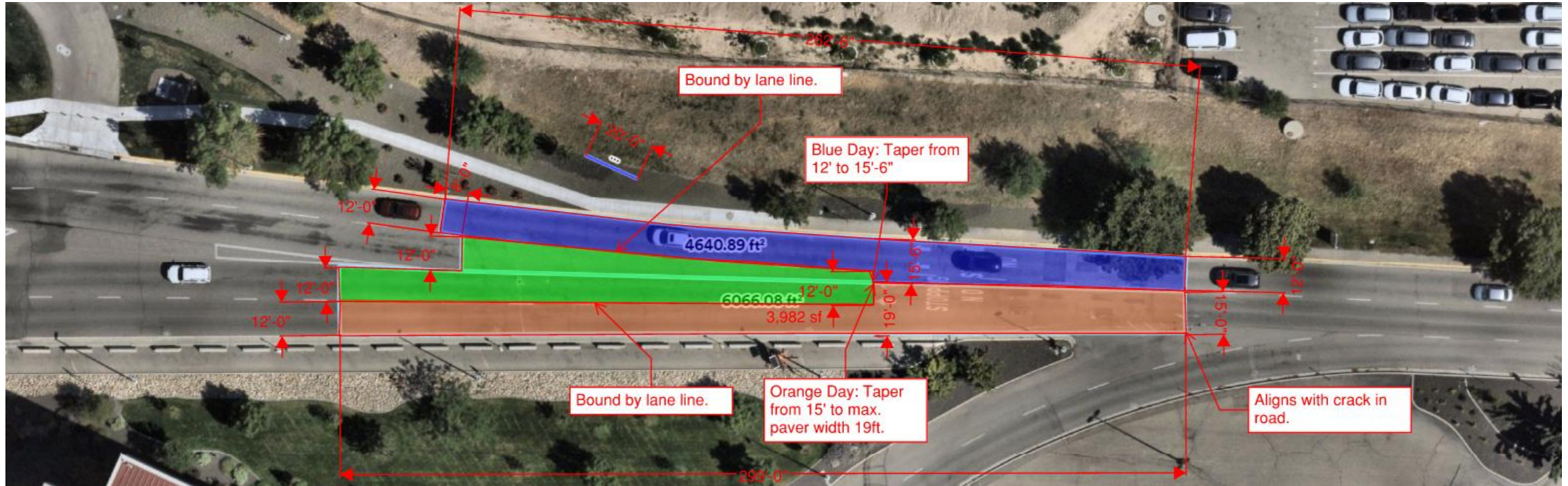
Sneak Peek

Additional renderings of Concourse A

- High, mass timber ceilings
- Larger passenger hold rooms
- Clerestory windows for lots of natural light



Airport Way Drainage Project



- Final work was completed last week to address potholes and asphalt cracks.

Fuel Farm

- 24" Veolia waterline installed along Production Rd
- Truck platform and transfer pipeline portion of the project are currently out for bid
- Project is paid for by a consortium of airlines, including Alaska, American, Delta, FedEx, Southwest and United
- Expected completion in spring 2027



Master Plan Update

February Focus:

- **Technical Advisory Committee next meeting:**
 - **Feb. 25, 9:30-11:30 a.m.** to discuss the draft documents completed to date.
- Forecast Working Paper: *Preparing for submission to FAA*
- Inventory Working Paper: *90% complete*
- Security Risk Assessment: *In process*
- Land-use compatibility analysis: *In process*
- ✓ *Completed:* Guiding Principles document
- ✓ *Completed:* Stakeholder Involvement Program
- ✓ *Completed:* Waste stream audit, Recycling, Reuse and Waste Reduction Plan
- The Master Plan will guide airside and landside facility development for the next 20 years.



Master Plan information and schedule are available on the airport's website:

<https://www.iflyboise.com/about-boi/masterplan/>

Welcome, Nate Vogel!

- Nate joined BOI as Deputy Director of Operations on January 5th
- Nate brings more than 20 years of experience in aviation and has built a strong reputation for operational excellence, safety, and teamwork
- Nate brings extensive operational and leadership experience, a deep background in regulatory compliance, emergency preparedness and community collaboration
- Nate was last in Washington, D.C., where he recently retired as a colonel in the United States Air Force



Congrats! Employee Promotions



Denise Armstrong, Capital Accounting Analyst

- Denise has been at the airport for 6 years.
- She manages the accounts payable processes to make sure our p-cards are processed efficiently. She also manages purchase orders and change orders.



Brady DeYoung, Property & Contract Manager

- Brady has been at the airport for a little over a year
- He will manage aviation ground leases and property agreements across the airfield, in addition to coordinating with tenants, project managers, legal and operations.



Mardi Mendenhall, Property & Contract Manager

- Mardi has been at the airport for 3 years.
- Responsible for managing non-aeronautical building and ground lease agreements, including rental car and off-airport concessions, overseeing property purchasing, and coordinating with the property team.

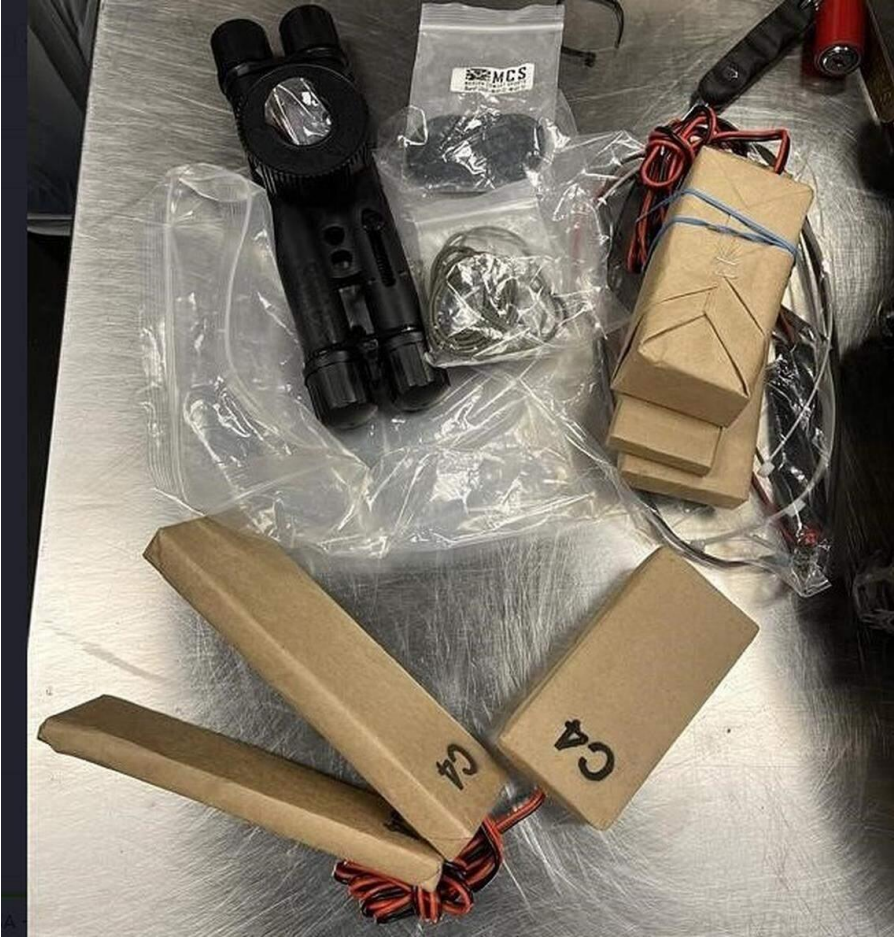
Be Ready in a Heartbeat



- Boise Airport has replaced its Automatic External Defibrillators (AED) with Zoll AEDs.
- AEDs are located throughout the terminal, between each restroom.
- AEDs are also located in Airport Operations, Airfield Maintenance, Airfield Lighting and in marked Operations vehicles.
- Nearly all Ops staff have CPR training.

Knowing where AEDs are located help people act quickly during cardiac emergencies.

Thank you, TSA!



- BOI has the dubious distinction of being TSA's "Best Catch of the Year" in the agency's annual Top 10 List for unusual items detected at checkpoints.
- This fake pipe bomb and paper-wrapped wooden blocks marked C4 were training props.
- TSA reminds passengers that even replica explosives cannot be taken through the airport.

Delta Blood Drive

- Delta held a blood drive on January 29th in the second-floor rotunda
- Collected 43 pints of blood, which has the potential to save up to 129 lives
- Thank you to Aneka Wagner for all her efforts to coordinate the drive!



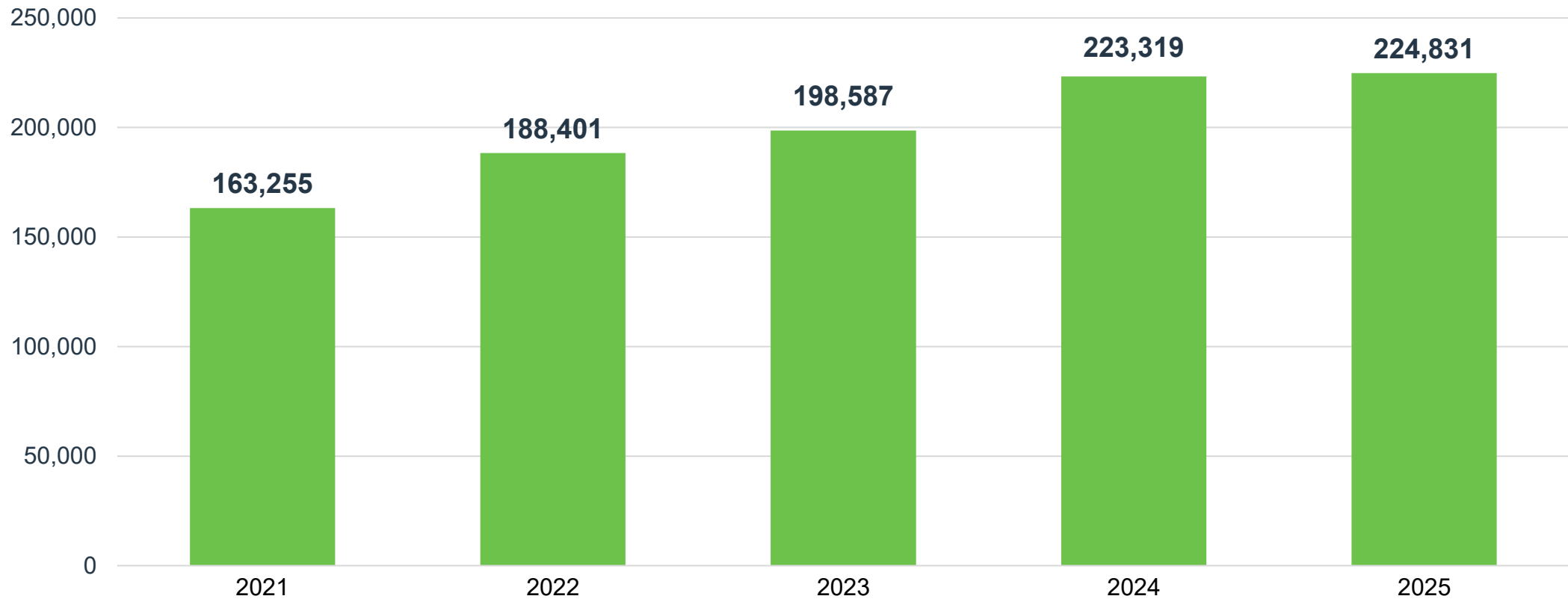
New Chef for Areas



- Thomas Makowski has joined the Areas team (formerly Delaware North).
- Classically trained chef with bachelor's and master's degrees in culinary arts and Italian cuisine.
- Experience managing large-scale foodservice programs, multi-location restaurant operations and high-performance culinary teams.
- Most recently served as a Culinary Operations Project Manager for Delaware North's travel division.

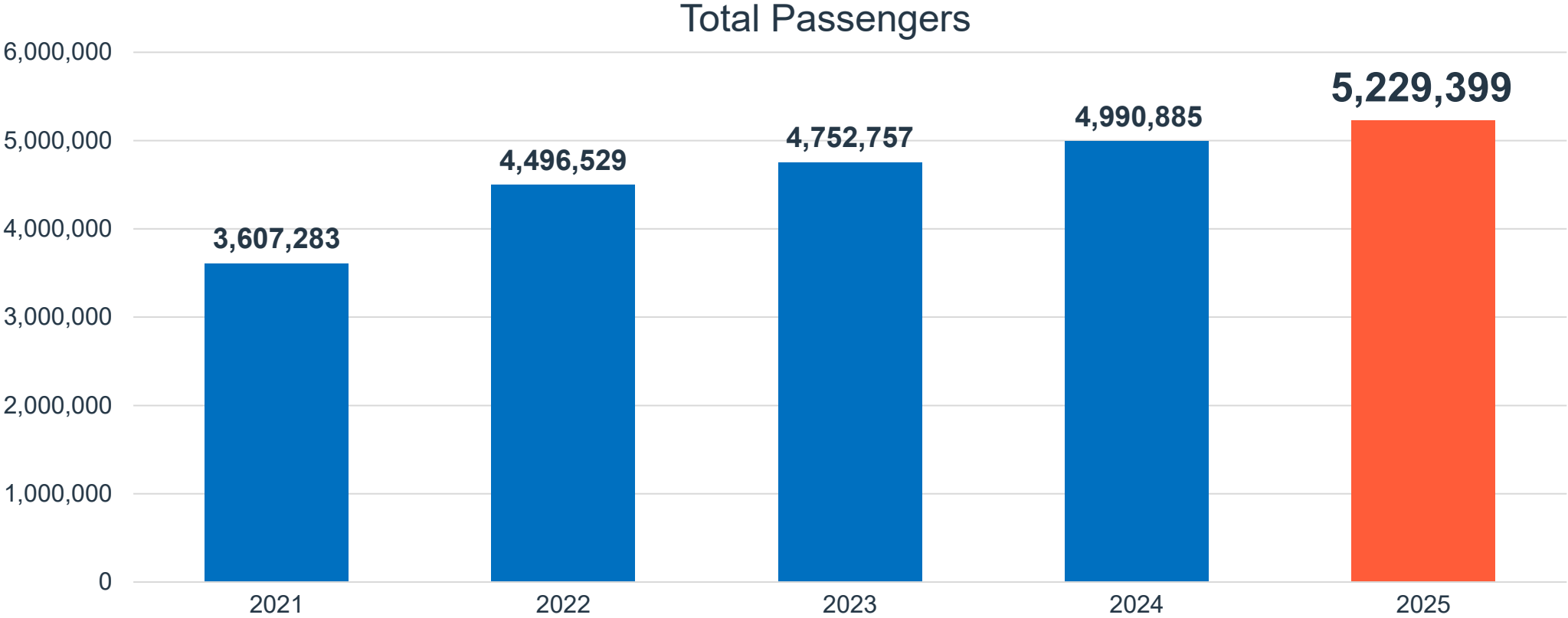
December Enplanements

Enplanements are up slightly from December 2024.



2025 Total Passengers

Passenger counts are above 5 million for the first time ever! Nearly 5% increase over 2024.



Top 10 Operating Revenue Description	FY 2026	FY 2025	\$ Change	% Change
Parking Lot	\$ 6,621,155	\$ 5,774,441	\$ 846,714	15%
Signatory Airline Landing Fees	\$ 3,095,248	\$ 3,314,742	\$ (219,495)	-7%
Rental Car Concession	\$ 1,898,147	\$ 1,904,860	\$ (6,713)	0%
Terminal Rent - Airlines	\$ 1,716,002	\$ 1,461,829	\$ 254,173	17%
Industrial Land Rent	\$ 1,118,790	\$ 1,054,871	\$ 63,918	6%
Terminal Concessions – Food/Beverage	\$ 528,716	\$ 409,453	\$ 119,263	29%
Rideshare (TNC) Revenue	\$ 515,925	\$ 331,006	\$ 184,919	56%
Terminal Concessions – Retail	\$ 371,076	\$ 240,745	\$ 130,330	54%
Landings/Freight	\$ 356,993	\$ 469,762	\$ (112,769)	-24%
Advertising	\$ 217,621	\$ 232,536	\$ (14,914)	-6%
Total Top 10 Operating Revenue	\$ 16,439,671	\$ 15,194,244	\$ 1,245,427	--
Other Operating Revenue	\$ 1,069,679	\$ (9,743,382)	\$ 10,813,061	-111%
Total Operating Revenue	\$ 17,509,350	\$ 5,450,862	\$ 12,058,488	221%

Top 10 Operating Expense Description	FY 2025	FY 2024	\$ Change	% Change
Personnel	\$ 4,840,578	\$ 4,419,752	\$ 420,826	10%
Indirect Cost Reimbursement	\$ 1,583,661	\$ 1,633,601	\$ (49,940)	-3%
Fire Service	\$ 1,226,424	\$ 1,188,203	\$ 38,221	3%
Policing Service	\$ 1,218,093	\$ 1,187,318	\$ 30,775	3%
Parking Management	\$ 904,694	\$ 658,074	\$ 246,621	37%
R/M – Structural/Electrical/Plumbing	\$ 375,593	\$ 274,441	\$ 101,152	37%
Professional Services	\$ 317,074	\$ 277,173	\$ 39,901	14%
Software and Cloud Services	\$ 280,568	\$ 72,698	\$ 207,870	286%
Power	\$ 228,274	\$ 212,546	\$ 15,728	7%
Credit Card Fees	\$ 174,942	\$ 191,481	\$ (16,539)	-9%
Total Top 10 Operating Expense	\$ 11,149,901	\$ 10,115,288		
Other Operating Expense	\$ 1,568,886	\$ 1,562,881	\$ 6,005	0%
Total Operating Expense	\$ 12,718,787	\$ 11,678,169	\$ 1,040,618	9%



Boise Airport

www.iflyboise.com