

APPENDIX J
SOCIOECONOMICS AND CHILDREN'S
ENVIRONMENTAL HEALTH AND
SAFETY RISKS

J. Socioeconomics and Children's Environmental Health and Safety Risks Background

The General Study Area is within three U.S. Census Bureau (USCB) block groups: Census Tract 18, Block Groups 1 and 2, and Census Tract 21, Block Group 1 (see **Figure J-1**). Not all block groups within a census tract were included in the analysis. Only if all or a portion of a block group was within the General Study Area was it then included in the analysis. Census tract and block group boundaries are determined by the USCB and cannot be changed to exactly fit the General Study Area. Therefore, the analysis presented in this Environmental Assessment (EA) includes the three census tracts for which the General Study Area falls.

J.1 Socioeconomics

Population and Housing

Table J-1 shows the population and housing data for the census tract block groups within the General Study Area individually and combined. Data from these census tracts, the City of Boise, and Ada County were included for comparison purposes. Census Tract 18, Block Group 2 has the highest population at 1,563 people and also had the highest total households (639), average persons per household (2.4), and highest percent occupied housing (95.6). A total of 3,237 people live in the General Study Area census tracts¹ which is about 1,402 households, about 90 percent of which are occupied, for an average of about two persons per household.²

¹ USCB. (2020, December). 2019 American Community Survey 5-Year Estimates, Race. Accessed February 2022, from USCB: <https://data.census.gov/cedsci/table?t=Race%20and%20Ethnicity&q=1500000US160010018001,160010018002,160010021001&y=2019&tid=ACSDT5Y2019.B02001>.

² USCB. (2020, December). 2019 American Community Survey 5-Year Estimates, Occupancy Status. Accessed February 2022, from USCB: <https://data.census.gov/cedsci/table?t=Housing%3AVacancy&q=1500000US160010018001,160010018002,160010021001&y=2019&tid=ACSDT5Y2019.B25002>.

Figure J-1
 Census Tract Block Groups in the Study Areas

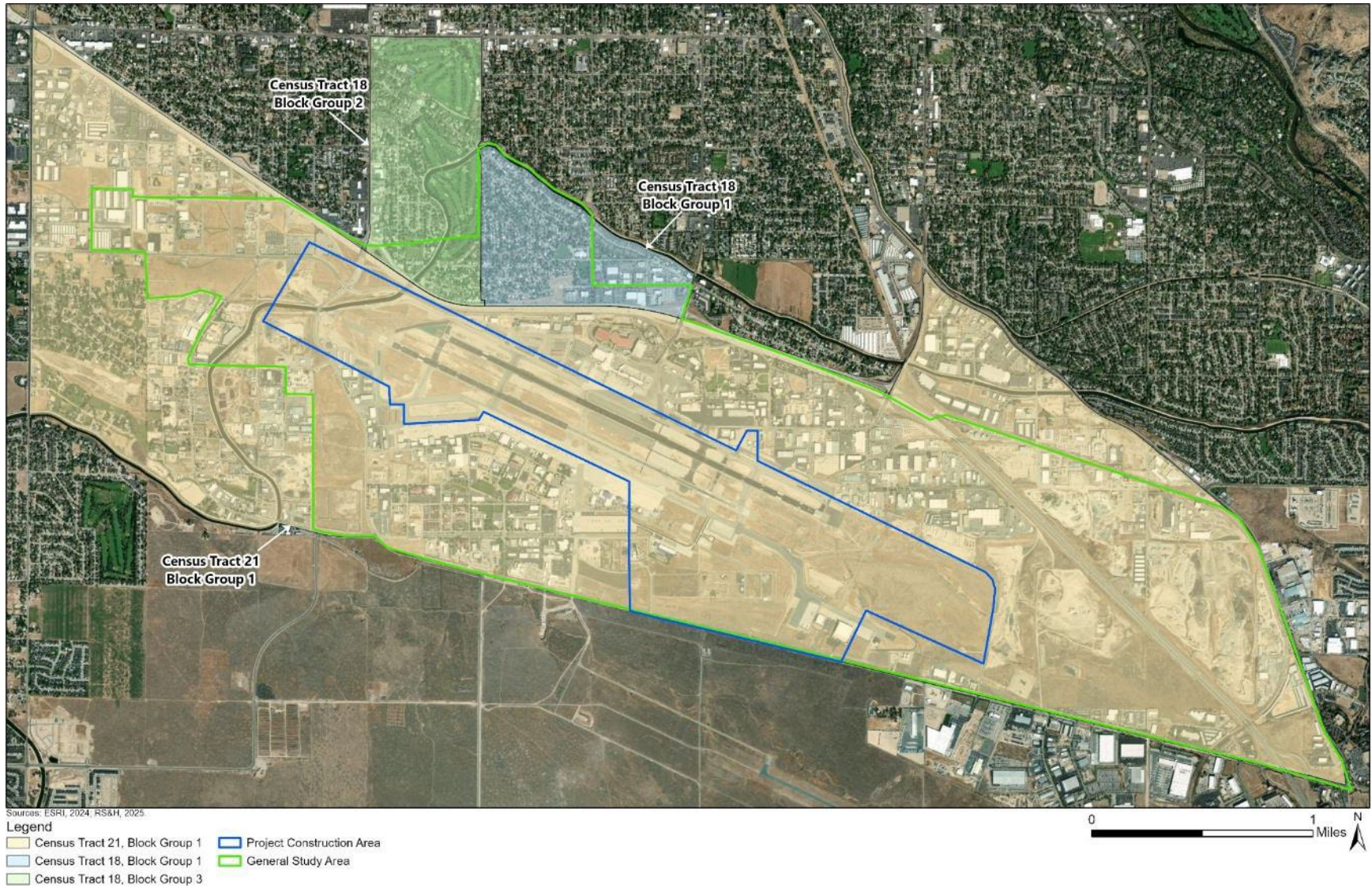


Table J-1
Population and Housing Characteristics

Population and Housing Characteristics	Census Tract 18, Block Group 1	Census Tract 18, Block Group 2	Census Tract 21, Block Group 1	General Study Area Census Tracts Combined	City of Boise	Ada County
Total Population	1,296	1,563	378	3,237	235,684	481,587
Total Households	575	639	188	1,402	102,295	196,901
Average Persons Per Household	2.3	2.4	2.0	2.3	2.3	2.4
Percent Housing Occupied	90.4	95.6	73.4	90.5	95.3	95.2

Sources: USCB, 2020; RS&H, 2022.

Employment

Table J-2 shows Census Tract 18 Block Group 1 has the highest unemployment rate (7.7%) when compared to Census Tract 18 Block Group 2 (5.6%) and Census Tract 21 Block Group 1 (3.5%). The General Study Area census tracts have the highest unemployment rate (6.3%)³ when compared to the City of Boise (4.5%)⁴ and Ada County (3.8%).⁵

³ USCB. (2020, December). 2019 American Community Survey 5-Year Estimates, Employment Status for the Population 16 Years and Over. Accessed February 2022, from USCB: <https://data.census.gov/cedsci/table?t=Employment&q=1500000US160010018001,160010018002,160010021001&tid=ACSDT5Y2019.B23025>.

⁴ USCB. (2020, December). 2019 American Community Survey 1-Year Estimates, Selected Economic Characteristics. Accessed February 2022, from USCB: <https://data.census.gov/cedsci/table?t=Employment&q=1600000US1608830&tid=ACSDP1Y2019.DP03>.

⁵ USCB. (2020, December). 2019 American Community Survey 1-Year Estimates, Selected Economic Characteristics. Accessed February 2022, from USCB: <https://data.census.gov/cedsci/table?t=Employment&q=0500000US16001&tid=ACSDP1Y2019.DP03>.

Economic Activity and Income

Table J-2 also shows Census Tract 21, Block Group 1 has the highest median income (\$79,286) compared to Census Tract 18 Block Group 2 (\$62,865) and Census Tract 18 Block Group 1 (\$58,947).⁶ Ada County has the highest median income (\$72,021)⁷ compared to the City of Boise (\$65,463)⁸ and the General Study Area census tracts (\$67,033).⁹ The national unemployment rate is (5.3%)¹⁰ and the national median income is (\$62,843).¹¹

The major roadways serving Boise Airport (Airport) are South Orchard Street, West Wright Street, South Vista Avenue, Interstate 84 (I-84), West Airport Way, West Gowen Road, and Broadway Avenue.

Table J-2
Employment Characteristics

Employment Characteristics	Census Tract 18, Block Group 1	Census Tract 18, Block Group 2	Census Tract 21, Block Group 1	General Study Area Census Tracts	City of Boise	Ada County
Percent Unemployed	7.7	5.6	3.5	6.3	4.5	3.8
Median Income	\$58,947	\$62,865	\$79,286	\$67,033	\$65,463	\$72,021

Sources: USCB, 2019; RS&H, 2022.

⁶ USCB (2020, December) 2019 American Community Survey 5 Year Estimates. Accessed January 2023, from USCB: [https://data.census.gov/table?t=Income+\(Households,+Families,+Individuals\)&q=1500000US160010018001,160010018002,160010021001&y=2019&tid=ACSDT5Y2019.B19013](https://data.census.gov/table?t=Income+(Households,+Families,+Individuals)&q=1500000US160010018001,160010018002,160010021001&y=2019&tid=ACSDT5Y2019.B19013)

⁷ USCB (2020, December). American Community Survey 1-Year Estimates. Accessed January 2023, from USCB: [https://data.census.gov/table?t=Income+\(Households,+Families,+Individuals\)&q=0500000US16001&y=2019&tid=ACSST1Y2019.S1903](https://data.census.gov/table?t=Income+(Households,+Families,+Individuals)&q=0500000US16001&y=2019&tid=ACSST1Y2019.S1903)

⁸ USCB (2020, December). 2019 American Community Survey 1-Year Estimates. Accessed January 2023, from USCB: <https://data.census.gov/cedsci/table?t=Employment&q=1600000US1608830&tid=ACSDP1Y2019.DP03>

⁹ USCB (2020, December) 2019 American Community Survey 5 Year Estimates. Accessed January 2023, from USCB: [https://data.census.gov/table?t=Income+\(Households,+Families,+Individuals\)&q=1500000US160010018001,160010018002,160010021001&y=2019&tid=ACSDT5Y2019.B19013](https://data.census.gov/table?t=Income+(Households,+Families,+Individuals)&q=1500000US160010018001,160010018002,160010021001&y=2019&tid=ACSDT5Y2019.B19013)

¹⁰ USCB (2020, December). 2019 American Community Survey 5-Year Estimates. Accessed January 2023, from USCB: <https://data.census.gov/table?t=Employment&q=0100000US&y=2019&tid=ACSST5Y2019.S2301>.

¹¹ USCB (2020, December). American Community Survey 5-Year Estimates. Accessed January 2023, from USCB: [https://data.census.gov/table?t=Income+\(Households,+Families,+Individuals\)&q=0100000US&y=2019&tid=ACSST5Y2019](https://data.census.gov/table?t=Income+(Households,+Families,+Individuals)&q=0100000US&y=2019&tid=ACSST5Y2019).

J.2 Children’s Environmental Health and Safety Risks

In addition to the residential area discussed in **Section 4.10** of the EA, areas of particular concern for children’s health risks and safety include schools, day cares, children’s health clinics, and child-friendly recreational facilities. There is one school within the General Study Area, Owyhee Elementary School.¹² There are no day care facilities or children’s health clinics within the General Study Area. There is one child-friendly recreational facility in the General Study Area, Owyhee Park, a city park with a basketball court, playground, tennis courts, open play areas, and restrooms.¹³ **Table J-3** shows individual and combined child age distribution of the General Study Area census tracts compared to the City of Boise and Ada County.^{14 15 16}

Table J-3
Children Age Distributions

Child Age Group	Census Tract 18, Block Group 1	Census Tract 18, Block Group 2	Census Tract 21, Block Group 1	General Study Area Census Tracts	City of Boise	Ada County
Population Under 5	55	51	5	111	10,981	27,254
Population ages 5-9	84	96	47	227	11,787	27,542
Population ages 10-14	81	87	36	204	13,868	36,296
Population ages 15-17	49	30	21	100	16,256	33,100
Total	269	264	109	642	52,892	124,192

Sources: USCB, 2019; RS&H, 2022.

¹² USEPA. (2022, January). NEPAAssist, Places. Accessed January 2022, from USEPA: <https://nepassisttool.epa.gov/nepassist/nepamap.aspx?wherestr=boi+airport>.

¹³ City of Boise. (2022, January). Parks, Owyhee Park. Accessed January 2022, from City of Boise: <https://www.cityofboise.org/departments/parks-and-recreation/parks/owyhee-park/>.

¹⁴ USCB. (2020, December). 2019 American Community Survey, 5-Year Estimates, Sex by Age. Accessed February 2022, from USCB: <https://data.census.gov/cedsci/table?t=Populations%20and%20People&q=1500000US160010018001,160010018002,160010021001&tid=ACSDT5Y2019.B01001>.

¹⁵ USCB. (2020, December). 2019 American Community Survey, 1-Year Estimates, Sex by Age. Accessed February 2022, from USCB: <https://data.census.gov/cedsci/table?t=Populations%20and%20People&q=1600000US1608830&tid=ACSDT1Y2019.B01001>.

¹⁶ USCB. (2020, December). 2019 American Community Survey 1-Year Estimates, Age and Sex. Accessed February 2022, from USCB: <https://data.census.gov/cedsci/table?t=Age%20and%20Sex&q=0500000US16001&loc=43.6009,-116.2477,z10.6242>.